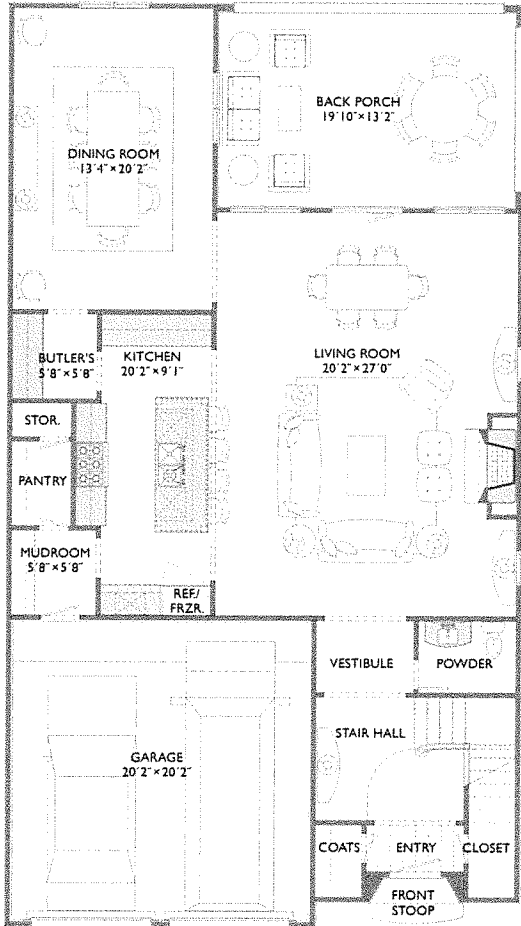


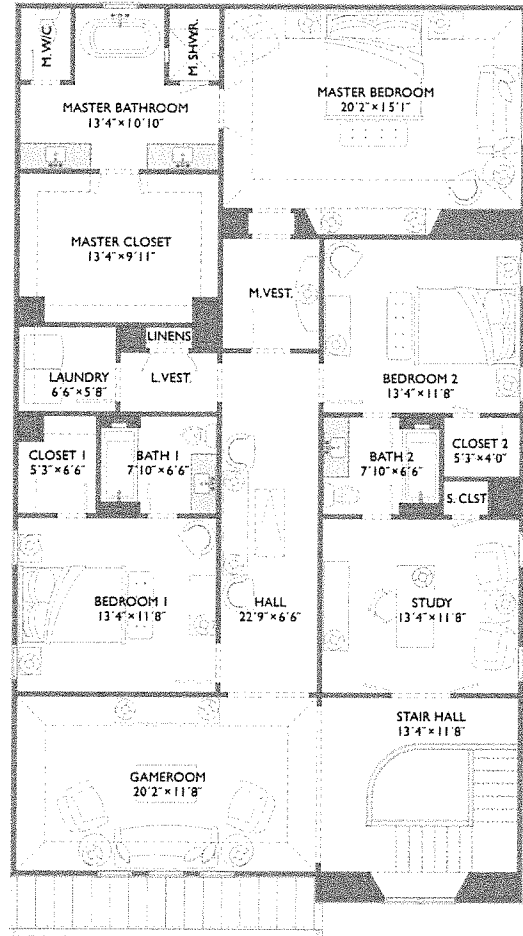


# MARAVILLA COURT

## UNIT D-2



FIRST FLOOR



SECOND FLOOR



## BUTLER BROTHERS

### Maravilla Court Features

#### Exterior Aesthetics

- Butler Brothers Custom Architecture
- Stucco and Hardi Panel Exteriors
- Insulated Patio Doors
- Eight foot Mahogany Entry Door
- Underground Drainage
- 2-Car Garage with Cedar Garage Door
- Garage door opener with Remotes
- Covered Rear Patio (See Plan)
- Architect Designed Landscape Plan
- Casement Windows (See Plan)

#### Interior Aesthetics

- Wide Plank Oak Floors (See Plan)
- Iron Stair Railing and Spindles
- Crown Molding at Entry, Living, Dining, Kitchen, and Master Suite
- Vaulted Ceilings (See Plan)
- Recessed Panel Interior Doors
- Winding staircase with Wood Treads
- Bronze Door Hardware
- Gas fireplace with Electric Start
- 8ft and 9ft Ceilings (See Plan)
- Architecturally designed Plans, and Professionally assembled Design Schemes

#### Master Suite Specifications

- Vaulted Ceiling in Bedroom (See Plan)
- American Standard Plumbing Fixtures
- Tranquil 6ft Soaker Tub
- Glass Encased Shower
- Double Vanity with Under-mount Sinks
- Walk-in Closets

#### Kitchen Specifications

- Quarts Countertops
- Painted Shaker Style or Flat Panel Laminate Cabinet Doors
- Bosh 36" Gas Cooktop, Discrete under-cabinet retractable hood, Dishwasher, and Microwave are standard. Bosh Refrigerator available as an upgrade.
- Thermador Pro-Style Package available as an upgrade.
- Single Bowl Under-mount Sink
- Subway Tile Backsplash Standard, multiple upgrade options available.
- American Standard Faucet standard, Modern faucet available with upgrade.
- LED Under Cabinet Lighting

#### Construction Specifications

- 14+ SEER HVAC unit
- Engineered Wood Floors
- Alarm Pre-Wire (1 Key Pad and All Doors)
- RG6 and CAT5 Data Cables