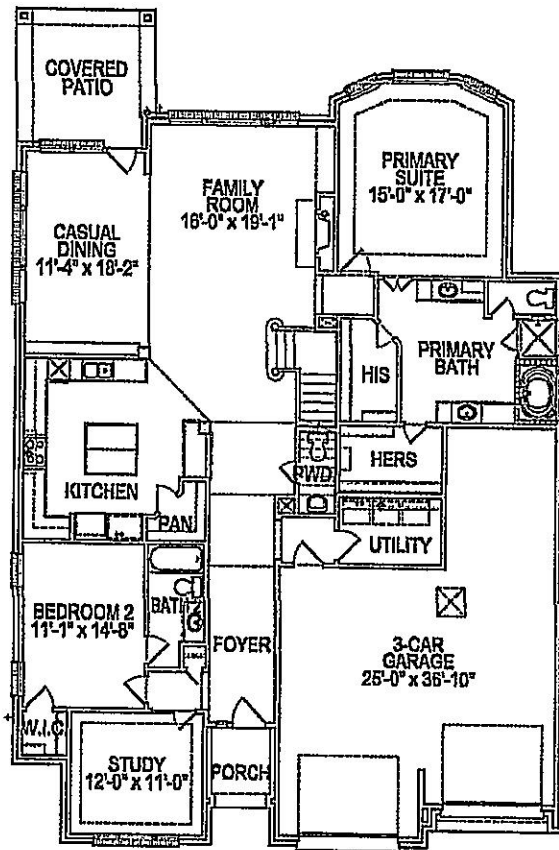
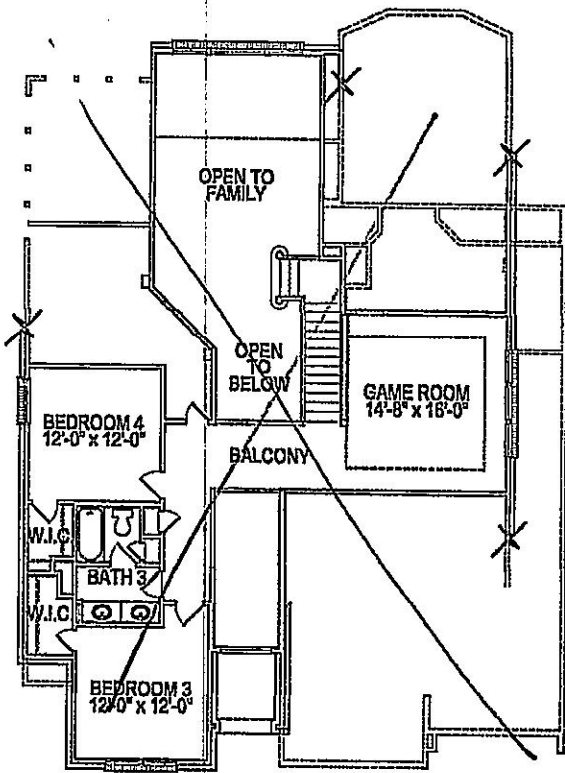


Marienfeld 3,217 Sq. Ft.

4 Bedrooms | 3.5 Baths | 3 Car Garage



FIRST FLOOR PLAN



SECOND FLOOR PLAN

Floorplans, square footage, specifications, prices, and available options may vary by elevation and/or community and are subject to change without prior notice. Images are an artist's conception and not a guarantee of final specifications. Please see your Trendmaker New Home Advisor for details and additional information.

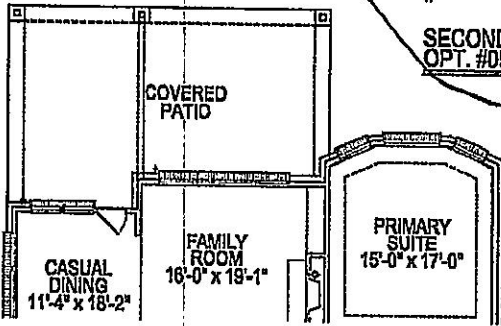
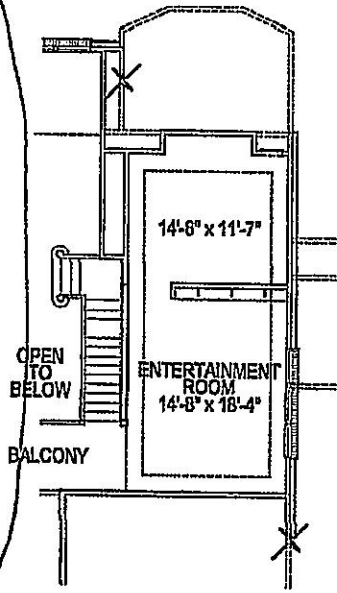
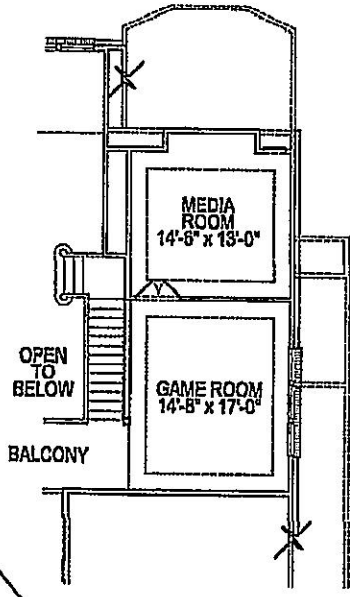
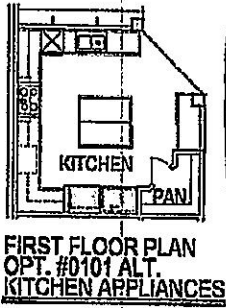
E11 (F503 3 CAR)

LAST REVISED 10/10/19

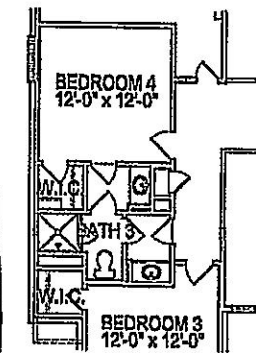
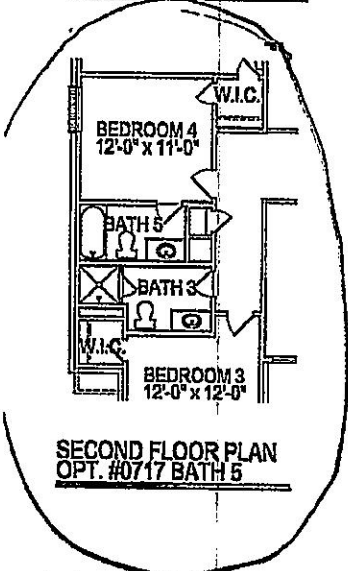


Marienfeld 3,217 Sq. Ft.
 4 Bedrooms | 3.5 Baths | 3 Car Garage

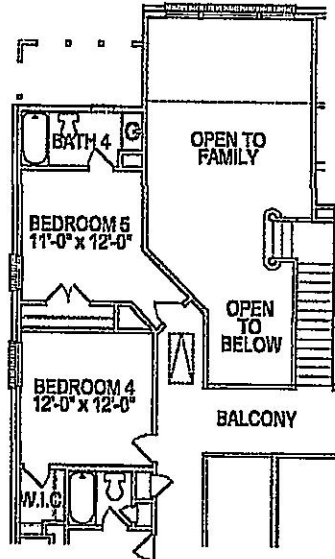
Plan Options



**FIRST FLOOR PLAN
 OPT. #0367 ENLARGED
 COVERED PATIO**



**SECOND FLOOR PLAN
 OPT. #0718 VAN. 1 AND 2**



**SECOND FLOOR PLAN
 OPT. #0094 BEDROOM 5/BATH 4**

Floorplans, square footage, specifications, prices, and available options may vary by elevation and/or community and are subject to change without prior notice. Images are an artist's conception and not a guarantee of final specifications. Please see your Tronmaker New Home Advisor for details and additional information.

Marienfeld 3,217 Sq. Ft.
4 Bedrooms | 3.5 Baths | 3 Car Garage



Elevation - J



Elevation - K



Elevation - L



Elevation - M

Floorplans, square footage, specifications, prices, and available options may vary by elevation and/or community and are subject to change without prior notice. Images are artist's conception and not a guarantee of final specifications. Please see your Trendmaker Now Home Advisor for details and additional information.

E11 (F503 3 CAR)

LAST REVISED 10/10/18

