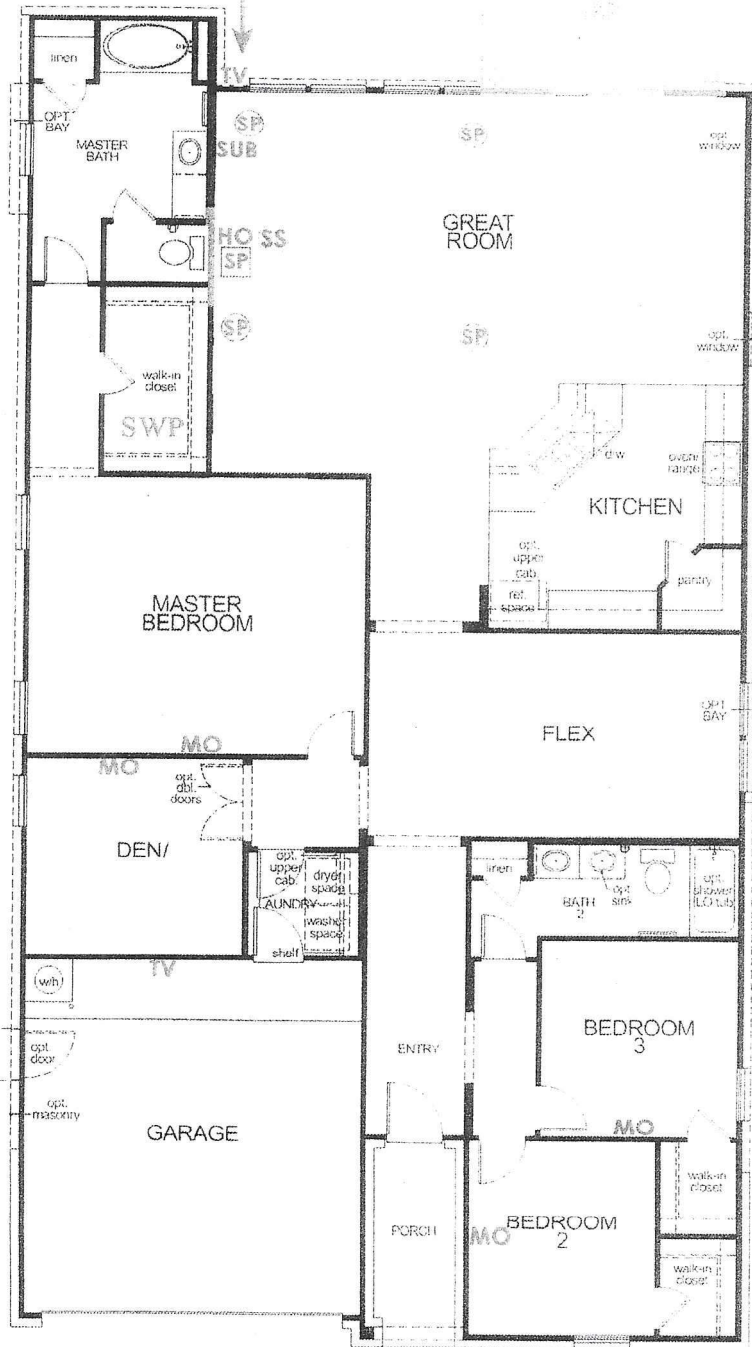




HOMEPRO

28618 Cabrera Hill Lane

TV on patio up in corner high
next to additional added electrical
outlet



- MO - Media Outlet (1 RG6/1 CAT5e)
- TV - TV Location (1 RG6)
- CAT - Phone or DATA (1 CAT5e)
- ENT - Home Entertainment (1 CAT5e/ 2 RG6)
- HO - Home Outlet(2 CAT5e/1 RG6)
- UNV - Universal Outlet (2 CAT5e/2 RG6)
- NO - Network Outlet (3 CAT5e/ 1 RG6)
- SP - Speaker Prewire
- SP - In-Ceiling Speaker Prewire
- SP - In-Wall Speaker Prewire
- SP - Atmos Speaker Prewire
- SUB - Subwoofer (1 RG6)
- SS - Surround Sound Prewire Homerun
- DVC - Digital Volume Control Prewire Only
- ST - Stereo Speaker Prewire Homerun
- HDMI - HDMI Bundle (2 HDMI/2 CAT5e Trimmed)(Conduit)
- HO - HDMI Bundle Homerun Locator
- PROJ - Projector Bundle (2 HDMI/ 2 CAT5e Trimmed)(Conduit)
- SWP - Structured Wiring Panel
- PROJ - Projector Bundle Homerun
- EO - Electrical Outlet (110 Volt)
- CAM - Camera Location
- CC - Camera DVR Homerun
- CC - Camera DVR Homerun
- CO - Conduit (Installed next to electrical)
- CO - Conduit Homerun
- CO - 5 Runs of Cat5e Bundled
- CO - 5 Runs of Cat5e Homerun
- MD - Motion Detector
- KP - Keypad
- GB - Glass Break Detector
- LZ - Lighting Zone (1 Light switch)
- AP - Home Automation Panel Prewire
- WAP - Wireless Access Point Prewire (1 CAT5e)
- VAC - Central Vac Master Location
- INT - Intercom Station Prewire
- IM - Intercom Master Unit
- RS - Rock Speaker
- IR - IR Control
- OH - Overhead Garage Switch
- HH - Hammer Height
- SWP2 - Structured Wiring Panel 2
- TUX - Incode Keypad
- IR - TUX Code of Approx. 9'
- NP - Network (2 CAT5e)

SS