

NOTES:
 1. THIS SURVEY IS BASED UPON DEED RECORDS IN HARRIS COUNTY, TEXAS.
 2. THE PROPERTY IS LOCATED IN ZONE 1.

NORTH STAR TITLE COMPANY, LLC

DATE	BY	NOTES

NOTE: According to the F.S.B.M. in Map No. 482212561694, this property does lie in Zone 1.

LEGEND

○	CONCRETE SPANDREL	■	IRON CORNER
○	1/4" IRON PIN POINT	■	IRON CORNER
○	1/2" IRON PIN POINT	■	IRON CORNER
○	3/4" IRON PIN POINT	■	IRON CORNER
○	1" IRON PIN POINT	■	IRON CORNER
○	2" IRON PIN POINT	■	IRON CORNER
○	3" IRON PIN POINT	■	IRON CORNER
○	4" IRON PIN POINT	■	IRON CORNER
○	5" IRON PIN POINT	■	IRON CORNER
○	6" IRON PIN POINT	■	IRON CORNER
○	8" IRON PIN POINT	■	IRON CORNER
○	10" IRON PIN POINT	■	IRON CORNER
○	12" IRON PIN POINT	■	IRON CORNER
○	14" IRON PIN POINT	■	IRON CORNER
○	16" IRON PIN POINT	■	IRON CORNER
○	18" IRON PIN POINT	■	IRON CORNER
○	20" IRON PIN POINT	■	IRON CORNER
○	22" IRON PIN POINT	■	IRON CORNER
○	24" IRON PIN POINT	■	IRON CORNER
○	26" IRON PIN POINT	■	IRON CORNER
○	28" IRON PIN POINT	■	IRON CORNER
○	30" IRON PIN POINT	■	IRON CORNER
○	32" IRON PIN POINT	■	IRON CORNER
○	34" IRON PIN POINT	■	IRON CORNER
○	36" IRON PIN POINT	■	IRON CORNER
○	38" IRON PIN POINT	■	IRON CORNER
○	40" IRON PIN POINT	■	IRON CORNER
○	42" IRON PIN POINT	■	IRON CORNER
○	44" IRON PIN POINT	■	IRON CORNER
○	46" IRON PIN POINT	■	IRON CORNER
○	48" IRON PIN POINT	■	IRON CORNER
○	50" IRON PIN POINT	■	IRON CORNER
○	52" IRON PIN POINT	■	IRON CORNER
○	54" IRON PIN POINT	■	IRON CORNER
○	56" IRON PIN POINT	■	IRON CORNER
○	58" IRON PIN POINT	■	IRON CORNER
○	60" IRON PIN POINT	■	IRON CORNER
○	62" IRON PIN POINT	■	IRON CORNER
○	64" IRON PIN POINT	■	IRON CORNER
○	66" IRON PIN POINT	■	IRON CORNER
○	68" IRON PIN POINT	■	IRON CORNER
○	70" IRON PIN POINT	■	IRON CORNER
○	72" IRON PIN POINT	■	IRON CORNER
○	74" IRON PIN POINT	■	IRON CORNER
○	76" IRON PIN POINT	■	IRON CORNER
○	78" IRON PIN POINT	■	IRON CORNER
○	80" IRON PIN POINT	■	IRON CORNER
○	82" IRON PIN POINT	■	IRON CORNER
○	84" IRON PIN POINT	■	IRON CORNER
○	86" IRON PIN POINT	■	IRON CORNER
○	88" IRON PIN POINT	■	IRON CORNER
○	90" IRON PIN POINT	■	IRON CORNER

SCALE: 1" = 30'

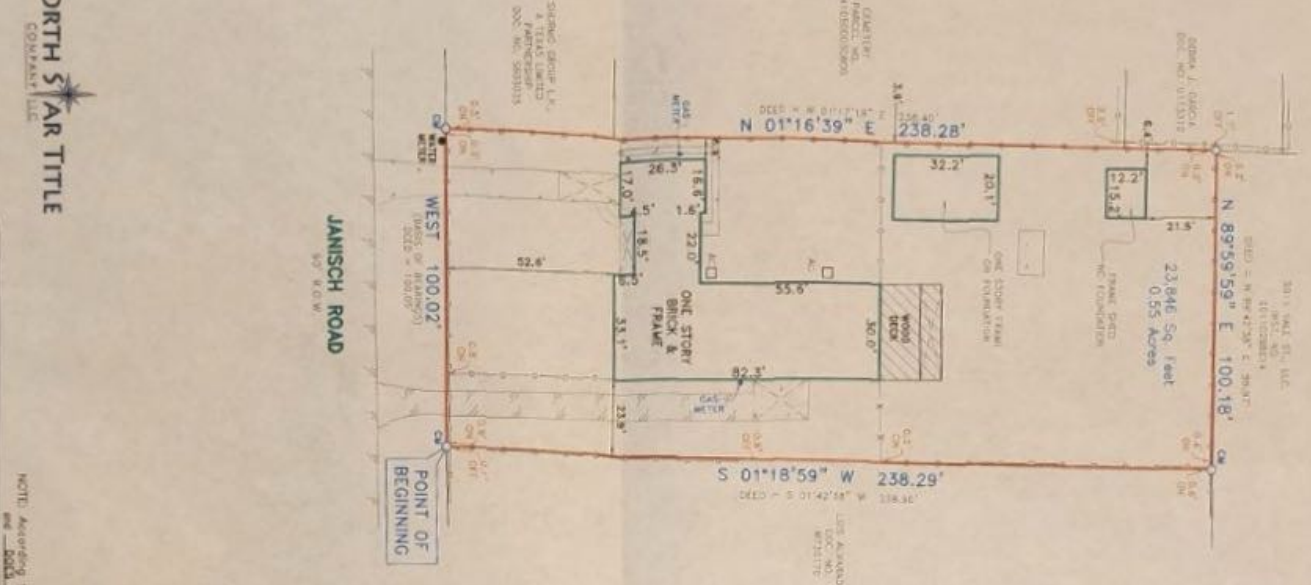
DATE	JOB NO.	D.F. NO.	DRAWN
08/14/17	17179117	170712413	BC

0.55 ACRES

S.W. ALLEN SURVEY, ABST. NO. 94

CITY OF HOUSTON, TEXAS

330 JANISCH ROAD



330 Janisch Road

Being a tract of land situated in the S.W. Allen Survey, Abstract Number 94 in Harris County, Texas, some being that part of said survey conveyed to Joan Compton, et al. unrecorded, by deed recorded in instrument number 2006147803, Official Public Records, Harris County, Texas and being more particularly described by means one bound on as follows:

BEING that of a 1/4 acre more or less parcel, said parcel being the Southeast corner of that part of said survey conveyed to Joan Compton, et al. unrecorded, by deed recorded in instrument number 2006147803, Official Public Records, Harris County, Texas and being more particularly described by means one bound on as follows:

THENCE West, along the North line of said section, a distance of 100.02 feet to a 1 inch iron pin found for corner, said corner being the Southeast corner of that tract of land conveyed to Shanno Group LP, a Texas Limited Partnership, by deed recorded in Document Number 5605025, Official Public Records, Harris County, Texas;

THENCE North, 01 degrees 18 minutes 59 seconds East, along the East line of said Shanno tract, containing 0.55 acres of land conveyed to Shanno Group LP, a distance of 238.29 feet to a 1 inch iron pin found for corner, said corner being the Southeast corner of that tract of land conveyed to 5011704 St. LLC, by deed recorded in instrument number 2011028814, Official Public Records, Harris County, Texas;

THENCE North 01 degrees 18 minutes 59 seconds East, along the South line of said 5011704 St. LLC tract, a distance of 120.18 feet to a 1 inch iron pin found for corner, said corner being the Northwest corner of said parcel conveyed to 5011704 St. LLC, by deed recorded in instrument number 2011028814, Official Public Records, Harris County, Texas;

THENCE South, 01 degree 18 minutes 59 seconds West, along the West line of said Alvarado tract, a distance of 238.29 feet to the POINT OF BEGINNING and containing 23846 square feet or 0.55 acres of land.

SURVEYOR'S CERTIFICATE

The undersigned Registered Professional Land Surveyor, C.N. Fouquier, hereby certifies to Security America Mortgage, Inc., Joan Manuel Compton and North Star Title, in connection with the transaction described in C.I. No. 170712413 that, (a) this survey and the property description set forth hereon were prepared from an actual on-the-ground survey; (b) such survey was conducted by the Surveyor, or under his direction; (c) all monuments shown hereon actually existed on the date of the survey, and the location, size and type of material thereof are correctly shown; Use of this survey by any other parties and/or for other purposes shall be at user's own risk and any loss resulting from other use shall not be the responsibility of the undersigned; The plat hereon is a correct and accurate representation of the property lines and dimensions as indicated; location and type of buildings are as shown; and EXCEPT AS SHOWN, all improvements are located within the boundaries the distances indicated and there are no visible and apparent encroachments or protrusions on the ground.

Executed this 14th day of August, 2017

C.N. Fouquier
 Registered Professional Land Surveyor No. 4572

0.55 ACRES

S.W. ALLEN SURVEY, ABST. NO. 94

CITY OF HOUSTON, TEXAS

330 JANISCH ROAD