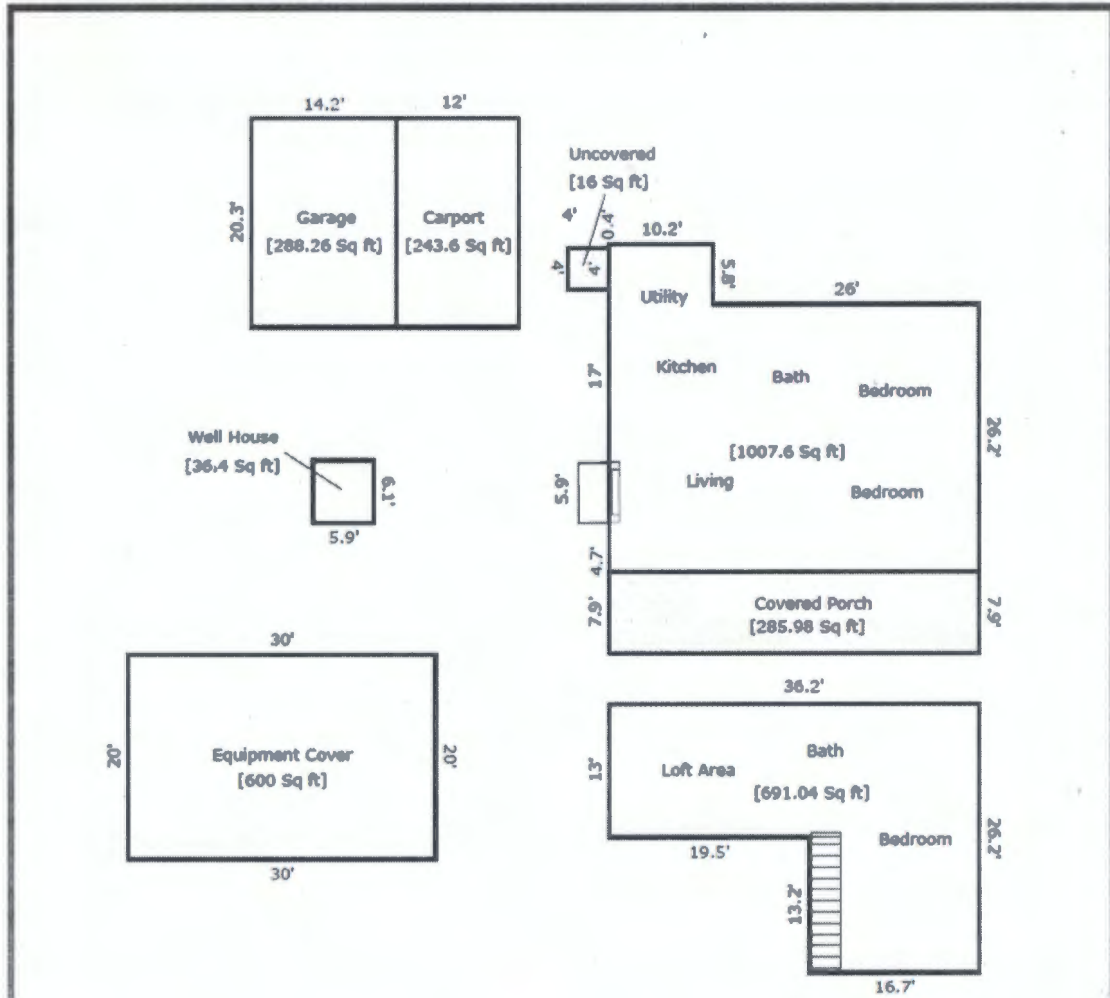


# Improvement Sketch



TOTAL Sketch by a la mode

### Area Calculations Summary

Living Area	Area Calculations Summary	Calculation Details
First Floor	1007.6 Sq Ft	26.2 x 26 = 681.2 10.2 x 32 = 326.4
Second Floor	691 Sq Ft	16.7 x 13.2 = 220.4 13 x 36.2 = 470.6
<b>Total Living Area (Rounded):</b>	<b>1699 Sq Ft</b>	
<b>Non-Living Area</b>		
Equipment Cover	600 Sq Ft	20 x 30 = 600
1 Car Detached	288.3 Sq Ft	20.3 x 14.2 = 288.3
Well House	36.4 Sq Ft	6.1 x 5.9 = 36.4
1 Car Carport	243.6 Sq Ft	20.3 x 12 = 243.6
Wood Deck	16 Sq Ft	4 x 4 = 16
Wood Deck	286 Sq Ft	36.2 x 7.9 = 286

TOTAL Sketch ~~and~~ by a la mode technologies, llc. 1-800-alamode