

# Exterior

10103 Mariner Oaks Drive

Stucco Color, Window  
Accents & Trim:

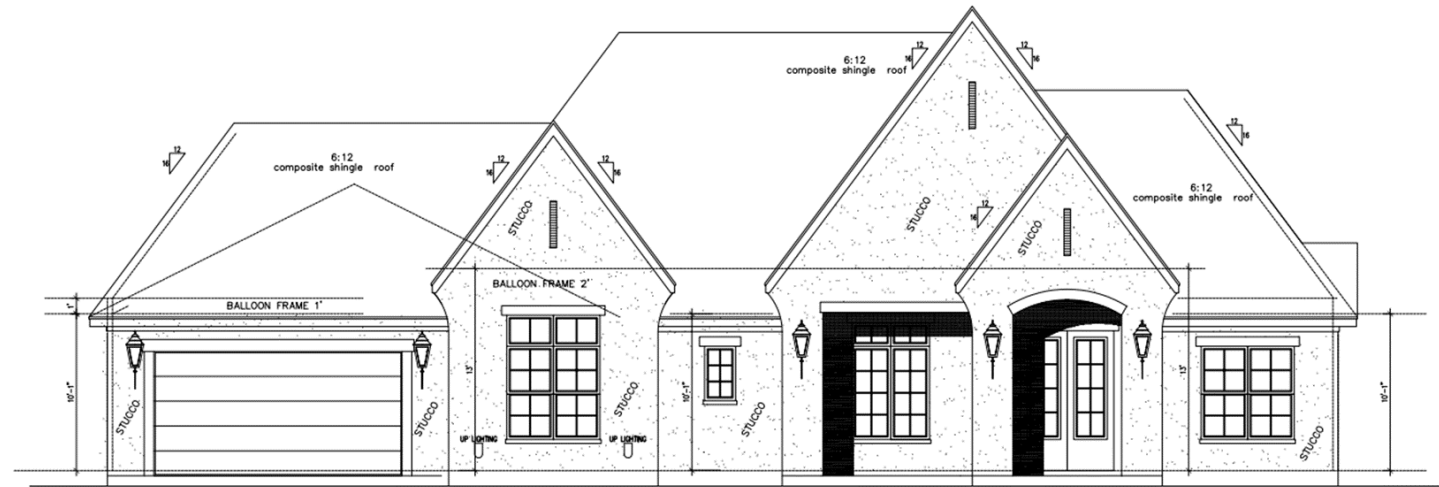
SW 9166  
Drift of Mist

Garage Doors, Full  
Gutters Fascia & Soffits:

SW 6076  
Turkish Coffee

Cedar Posts, and Front & Back Patio  
Covering Ceiling

Mocha 280



**Metal Roof:** Copper Brown

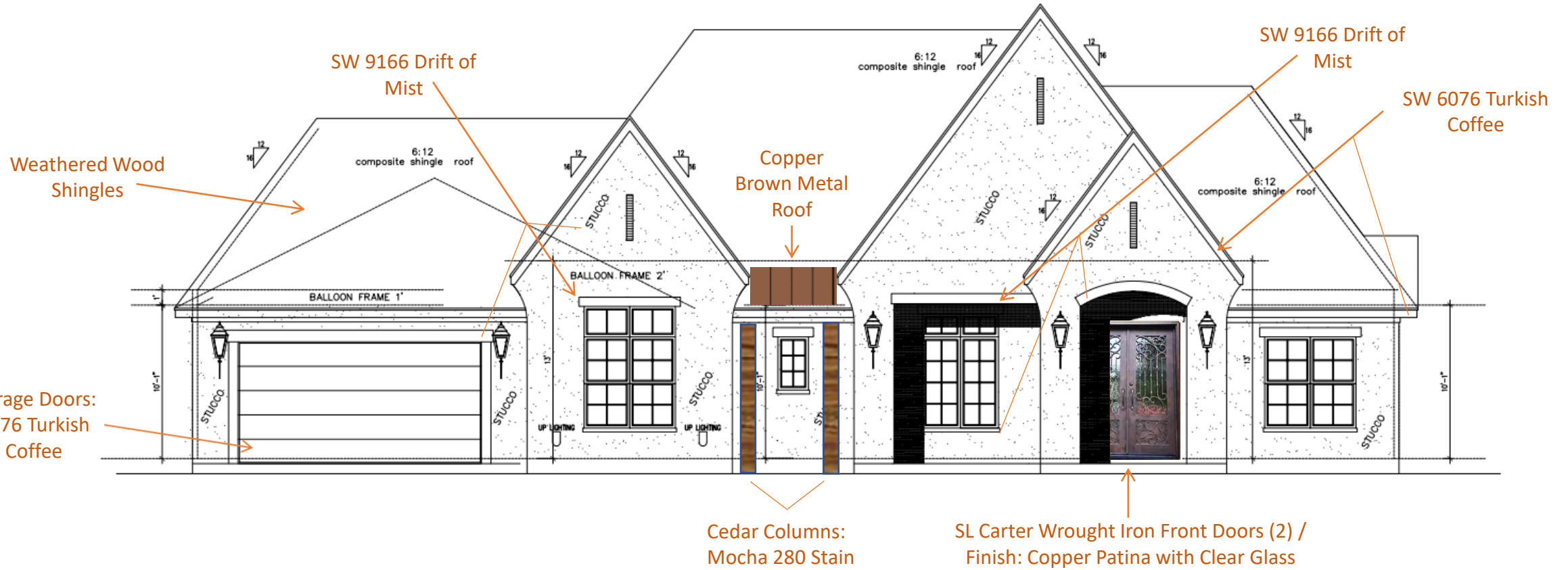
**Shingles:** Weather Wood

**Windows:** White

**Front & Back Porch Floor:** AZT Picasso  
Brushed / Chiseled Lyon (Travertine)  
Sold in 16 SF Bundles (12 Tiles) Mixed /  
Pattern: Lyon / Grout: 15 Bone (TBD)

# Exterior Colors

10103 Mariner Oaks Dr.



**Roof/Shingles:** Weathered Wood  
**Roof/Metal:** Copper Brown  
**Windows:** White (Inside & Out)  
**Stucco, Window Accents & Trim:** SW 9166 Drift of Mist

**Garage Doors, Full Gutters, Fascia & Soffits:** SW 6076 Turkish Coffee  
**Front Door(s):** SCL Carter Wrought Iron Front Doors (2) Finish: Copper Patina with Clear Glass

**Cedar Columns:** Mocha 280 Stain  
**Front Porch & Back Patio Covering Ceilings:** Wood Stained Mocha 280  
**Front Porch & Back Patio Floor:** AZT Picasso Brushed / Chiseled Lyon Pattern (Travertine)



# Exterior



**(4) Garage & (2)  
Back Porch Lights:**  
Kichler 49709  
Galemore 18" 2  
Light / Finish: Olde  
Bronze / E12  
Candelabra (12)



**(3) Coach Lights:**  
Kichler 49711  
Galemore 27" 3  
Light / Finish:  
Olde Bronze / E12  
Candelabra (9)



Roanoke 1-Line Wall Address  
Plaque by Whitehall Products  
SKU: W005051633 / Finish:  
Bronze & Gold

Old Jacksonville Patio Series /  
Finish: Oil Rubbed Bronze with  
52" Blades



Outdoor Living Fixture  
(Ceiling Fan):

Windsor 724 Garage Door



Decorative hardware shown in photo is not included

**Garage Door Opener:** Genie  
DC1128W Belt Drive with  
built in Aladdin Connect for  
Smartphone Control

**Garage Door:**

SW 6076  
Turkish Coffee

## Exterior Finishes



**Front Porch & Back Patio Covering**  
**Ceilings:** Wood Stained Mocha 280  
(Oil Based) -- duplicated from the  
Sienna Model



**Back Patio Custom Design:**  
Diamond/Trellis Pattern  
duplicated from the Sienna  
Model

# Exterior Doors & Door Hardware

**Front Door Handleset (2):** Schlage Addison Sectional Single Cylinder Keyed Entry Handleset with Birmingham Lever with Decorative Addison Trim Model: F60ADDBIRADD7/16 / Finish: Aged Bronze



**Breakfast Door to Patio & Garage Door:** Schlage Georgian Knob / Finish: Aged Bronze

**Front Door Finish Options:**  
Copper Patina with Clear Glass



**Front Door(s):** SCL Carter Wrought Iron Front Doors (2)



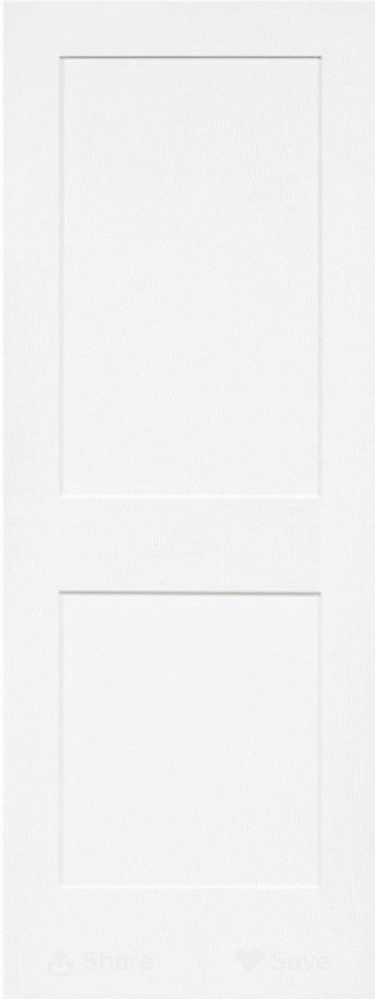
# Interior Doors & Door Hardware

**8' Interior Doors:**  
2 Panel Shaker



**Interior Door Hardware**  
**Throughout:** Schlage  
Birmingham Lever Set /  
/ Finish: Aged Bronze

**Media Room Pocket**  
**Doors: (2) Panel Shaker**



# Interior Paint Colors

Ceiling & Trim Color:

SW 7757  
**High Reflective White**

Main Wall Color:

SW 9166  
**Drift of Mist**

Media Room  
Walls & Ceiling:

SW 6076  
**Turkish Coffee**

# Cabinet Paint Colors

Majority of Cabinets  
Throughout the Home:

**Extra White**

Kitchen Hood &  
Butler's Pantry:

**Sienna (Alder)**



## Flooring



Lonestar Southern Traditions Chalk  
(Hickory) 3/8"X6 1/2"XRandom  
SKU:MOCH850

**(Foyer, Kevin's Study; Johnna's  
Study; Great Room; Dining Room;  
Butler's Pantry; Kitchen; Breakfast;  
Pantry; Game Room; Mud Room  
Primary Bedroom; Bedroom 2, 3, &  
4; Hallways & Bedroom/Hall Closets)**



Dwellings Groundwork Plus  
DW125 550 Latte -- 100%  
PureColor Solution Dyed BCF  
Polyester Cut Pile Style Carpet /  
8 lb Carpet Pad **(Media Room)**

## Foyer



Quorum International Celeste 8 Light 33"  
Wide Globe Style Single Tier Chandelier  
Model:6009-8-80 / Finish: Aged Brass / E12  
Candelabra (8)

## Family Room Fireplace

Upgrades include Heatilator Crave and Rave series linear fireplaces in various widths, by price request.



NDV42-IFT Heatilator 42"  
Novus Standard Direct Vent  
Gas Fireplace

Includes gas logs, tempered glass, black interior, black Simon front (SIM-4842) and wall switch and remote control.

## Francesca II

*Smooth Finish*



Cast Stone / Finish: Delicate White

## Ceiling Fans

**Johnna's Study, Great Room, Game Room, & Media Room Fans**



Old Jacksonville Classic Series /  
Finish: Oil Rubbed Bronze with  
52" Walnut Blades

**Primary Bedroom & Bedrooms 2, 3, & 4 Fans**



Old Jacksonville Classic Series /  
Finish: Oil Rubbed Bronze with  
52" Walnut Blades

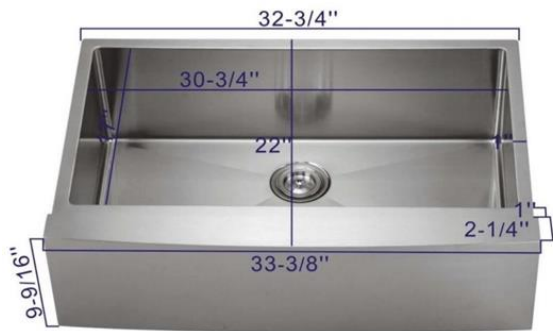
# Kitchen & Breakfast



Main Cabinets & Island  
**Extra White**

Harbinger  
Shaker  
Cabinets

Moen Align Spring 1.5 GPM Single Hole Pre-Rinse Pull Down Kitchen Faucet with Power Boost Model:5923BG / Finish: Brushed Gold



Single Bowl Undermount Apron Front AR-332210



Emtek Freestone 2" Bar Cabinet Knob Model:86727US4 / Finish: Satin Brass



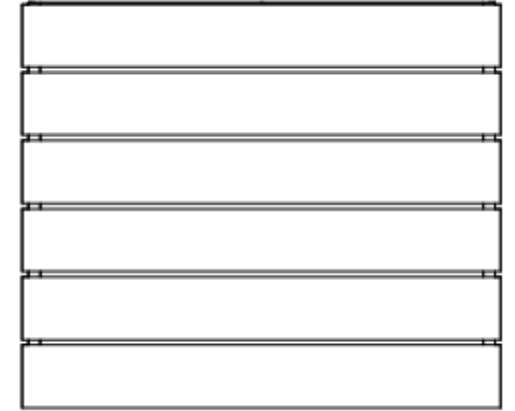
Kichler Armstrong 8 Light 30" Wide Sputnik Chandelier Model:43118NBR / Finish: Natural Brass / E26 Medium (8)



**Perimeter Counters & Island:**  
AZT Calacatta Capixaba (Marble)

Kitchen Hood  
**Sienna (Alder)**

Harbinger  
Hood #6



Harbinger Hood #6



**Backsplash:** AZT Flash White 3"X12" Ceramic Subway Tile / Install Horizontally 50% Offset / Finish Edges with White PVC Schluter Trim / Grout: 38 Avalanche (TBD)



Emtek Freestone 5" Center to Center Bar Cabinet Pull Model:86676US4 / Finish: Satin Brass



## Dining Room



Z-Lite Barclay 12  
Light 48" W Taper  
Candle Chandelier  
Model:482R-12OBR  
/ Finish Olde Brass /  
E12 Candelabra (12)



**Dining Room  
Tray Ceiling:**  
Wood Stained  
Mocha 280 (Oil  
Based)

## Butler's Pantry

(Dry Bar)



**Counter:** AZT Calacatta  
Capixaba (Marble)



Emtek Freestone 2"  
Bar Cabinet Knob  
Model:86727US4 /  
Finish: Satin Brass



Emtek Freestone 5" Center to  
Center Bar Cabinet Pull Model:  
86676US4 / Finish: Satin Brass



**Backsplash:** AZT Flash White  
3"X12" Ceramic Subway Tile /  
Install Horizontally 50% Offset /  
Finish Edges with White PVC  
Schluter Trim / Grout: 38  
Avalanche (TBD)

Sienna (Alder)

Harbinger Shaker  
Cabinets



JennAir 24" W Built-In Dual  
Zone Wine & Beverage Cooler  
(Holds 13 Wine Bottles)  
24" WX24" DX35" H Model:  
JUGFR242HL / Finish: Stainless  
Steel

# Laundry Room

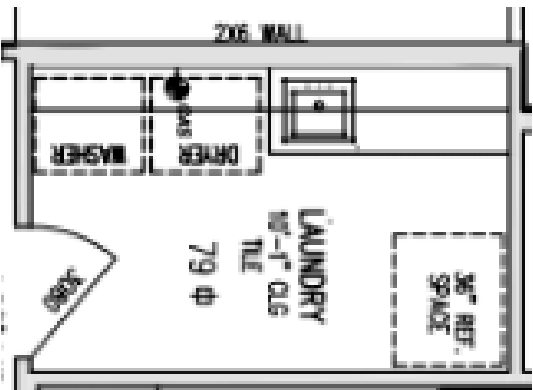


Moen Align Spring 1.5 GPM Single Hole Pre-Rinse Pull Down Kitchen Faucet with Power Boost Model:5923BG / Finish: Brushed Gold



Undermount, 23" by 18" R-231810

**Floor Tile:** Daltile Famed Diamond FM10 12" x 24" Matte (Porcelain) / Install 1/3 Offset / Grout: 38 Avalanche



Emtek Freestone 5" Center to Center Bar Cabinet Pull Model:86676US4 / Finish: Satin Brass



Emtek Freestone 2" Bar Cabinet Knob Model:86727US4 / Finish: Satin Brass

Harbinger Shaker Cabinets

**Extra White**



**Counter & run up as Backsplash:** AZT Bianco Levanto (Quartz)



# Dog Wash ( 2 Car Garage)



**Dog Wash Wall Tile:** Daltile Famed Diamond FM10 12" x 24" Polished (Porcelain) / Install 1/3 Offset Horizontally / Grout: 38 Avalanche Finish Edges with White PVC Schluter



**Dog Wash Floor:** Daltile Famed Diamond FM10 1" Penny Mosaic Matte (Ceramic) / Install Straight Lay / Grout: 38 Avalanche



Moen Wall Supply Elbow / Finish: Brushed Gold



Moen Align Three-Function Transfer Valve Trim Only - Less Rough In Model:T4192BG / Finish: Brushed Gold



Moen Align Single Function Pressure Balanced Valve Trim Only with Single Lever Handle Model: UT3292BG / Finish: Brushed Gold



Moen Single Function Hand Shower Package with Hose and Slide Bar Included Model:3868EPBG / Finish: Brushed Gold



# Mud Room

Emtek Freestone 2" Bar Cabinet Knob  
Model:86727US4 /  
Finish: Satin Brass

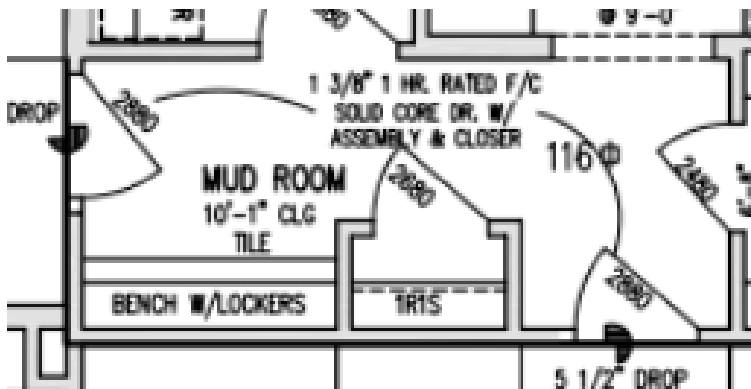


Emtek Freestone 5" Center to Center Bar Cabinet Pull  
Model:86676US4 / Finish: Satin Brass



Harbinger Shaker Cabinets

Extra White



# Powder Bath



Moen Align Faucet T6193BG / Finish: Brushed Gold



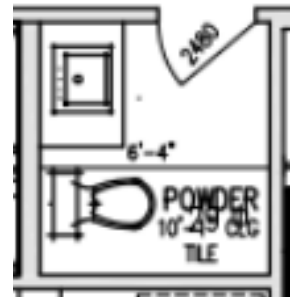
Emtek Freestone 5" Center to Center Bar Cabinet Pull  
Model:86676US4 /  
Finish: Satin Brass



Hudson Valley Lighting Ryan 17 1/2" W 3-Light Wedge Xenon Vanity Fixture  
Model #HUDH239303AGB | Item #7549216 / Finish: Aged Brass / G9 Xenon/Krypton Bulbs Included (3)



Emtek Freestone 2" Bar Cabinet Knob  
Model:86727US4 /  
Finish: Satin Brass



Counter: AZT Bianco Levanto (Quartz)



Floor Tile: Daltile Famed Diamond FM10 12" x 24" Matte (Porcelain) / Install 1/3 Offset / Grout: 38 Avalanche

Extra White

Harbinger Shaker Cabinets



Moen Align Bath Accessories (Hand Towel Bar YB0486 & TP Holder YB0408)



US-2015 Rectangular Sink 20" X 15"



Culpeper Modern & Contemporary Vanity Mirror with 3" W Wood (MDF) Frame by Three Posts 35" W X 45.5" H / Finish: Brushed Gold



# Primary Bath



(2) Moen Align Faucet T6193BG / Finish: Brushed Gold



(2) US-1815 Oval Sink 18 1/2 by 15 1/2



(2) Hudson Valley Lighting Ryan 24 3/4" W 4-Light Wedge Xenon Vanity Fixture in Aged Brass Model #HUDH239304AGB | Item #7549727 / Finish: Aged Brass / G9 Xenon / Krypton Bulbs Included (8)



Emtek Freestone 5" Center to Center Bar Cabinet Pull Model:86676US4 / Finish: Satin Brass



**Floor Tile:** Daltile Famed Diamond FM10 12" x 24" Matte (Porcelain) / Install 1/3 Offset / Grout: 38 Avalanche



(2) Moen Align Three-Function Transfer Valve Trim Only - Less Rough In Model:T4192BG / Finish: Brushed Gold



(2) Moen Align Single Function Pressure Balanced Valve Trim Only with Single Lever Handle Model:UT3292BG / Finish: Brushed Gold



Moen Align Roman Tub T393BG / Finish: Brushed Gold



(2) Moen Wall Supply Elbow



(2) Moen Single Function Hand Shower Package with Hose and Slide Bar Included Model:3868EPBG / Finish: Brushed Gold



**Counter & Shower Bench (Top):** AZT Bianco Levanto (Quartz)



**Shower Floor & Shampoo Niche Accent:** Daltile Famed Diamond FM10 1" Penny Mosaic Matte (Ceramic) / Install Straight Lay on Main (Back) Wall of Niche & on Shower Floor / Grout: 38 Avalanche

**Shower Wall Tile:** Daltile Famed Diamond FM10 12" x 24" Polished (Porcelain) / Install 1/3 Offset Horizontally / Grout: 38 Avalanche



Emtek Freestone 2" Bar Cabinet Knob Model:86727US4 / Finish: Satin Brass



Signature Hardware Boyce 65" Free Standing Acrylic Soaking Tub with Rear Integrated Drain and Overflow Model:445990 Finish: White with Polished Brass Drain

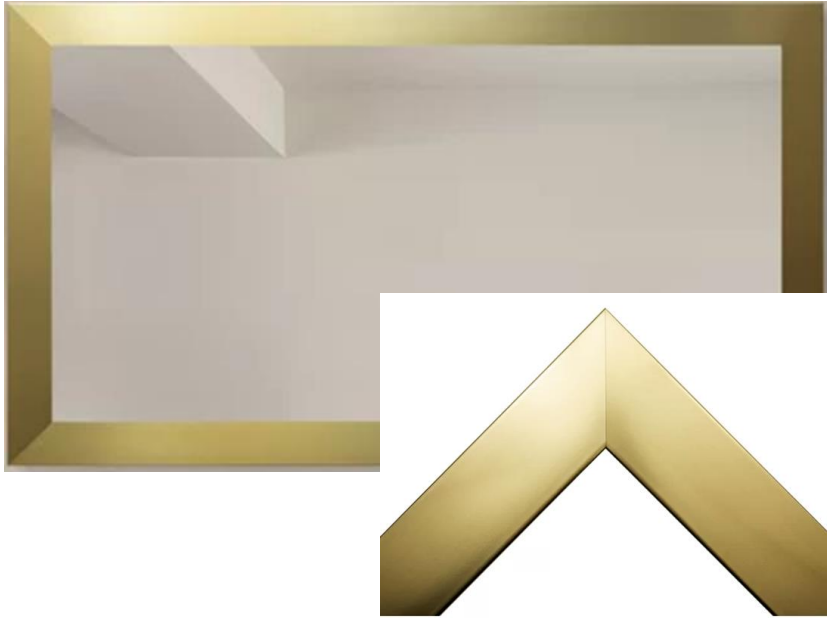
**Extra White**

Harbinger Shaker Cabinets

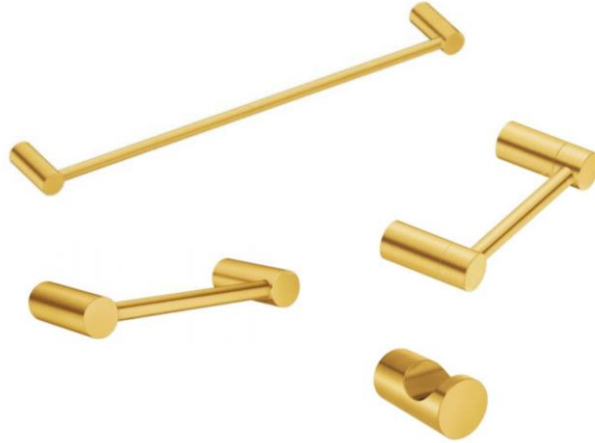


Finish Edges with White PVC Schluter

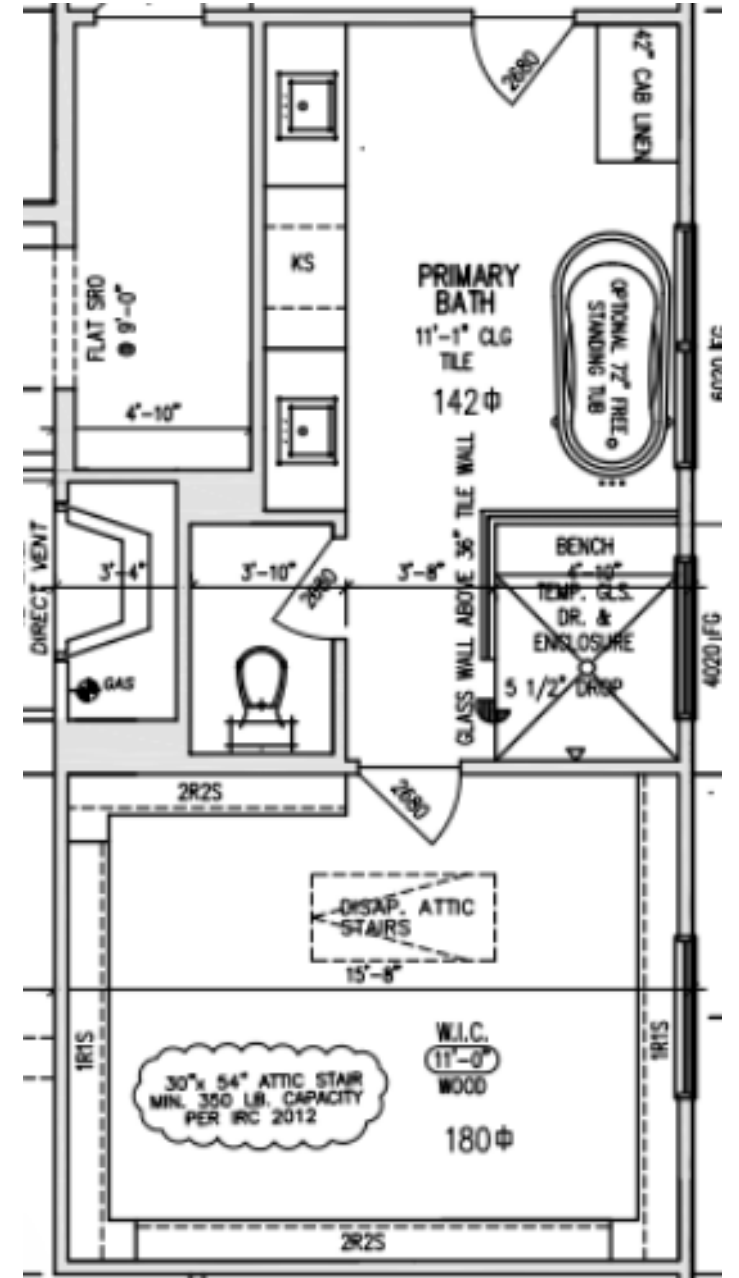
# Primary Bath



(2) Culpeper Modern & Contemporary Vanity Mirrors with 3"W Wood (MDF) Frame by Three Posts 39"W45.5"H / Finish: Brushed Gold



Moen Align 24" Bar YB0424, TP YB0408, (2) Hand Towel Bars YB0486, Robe Hook YB0403 / Finish: Brushed Gold



# Bath 2



Moen Align Faucet  
T6193BG / Finish:  
Brushed Gold



US-2015 Rectangular  
Sink 20"X15"



Hudson Valley Lighting Ryan 17 1/2"W 3-  
Light Wedge Xenon Vanity Fixture Model  
#HUDH239303AGB | Item #7549216 /  
Finish: Aged Brass / G9 Xenon / Krypton  
Bulbs Included (3)



Emtek Freestone 5"  
Center to Center  
Bar Cabinet Pull  
Model:86676US4 /  
Finish: Satin Brass



**Floor Tile:** Daltile Famed Diamond  
FM10 12" x 24" Matte (Porcelain) /  
Install 1/3 Offset / Grout: 38  
Avalanche



Moen Align Three-  
Function Transfer Valve  
Trim Only - Less Rough In  
Model:T4192BG / Finish:  
Brushed Gold



Moen Align Single Function  
Pressure Balanced Valve Trim  
Only with Single Lever Handle  
Model:UT3292BG / Finish:  
Brushed Gold



Moen Single  
Function Hand  
Shower Package  
with Hose and  
Slide Bar Included  
Model:3868EPBG /  
Finish: Brushed  
Gold



**Counter & Shower Bench (Top):**  
AZT Bianco Levanto (Quartz)



**Shower Floor &  
Shampoo Niche  
Accent:** Daltile Famed  
Diamond FM10 1"  
Penny Mosaic Matte  
(Ceramic) / Install  
Straight Lay on Main  
(Back) Wall of Niche &  
on Shower Floor /  
Grout: 38 Avalanche



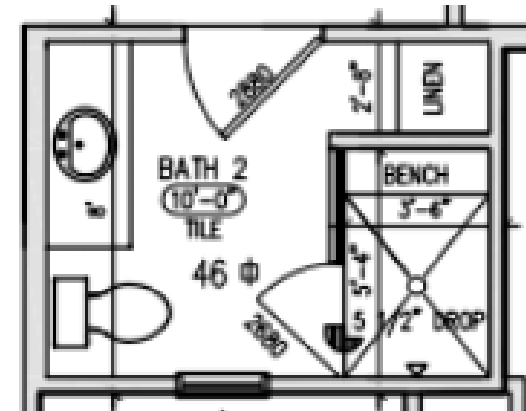
Moen Wall  
Supply  
Elbow



**Shower Wall Tile:** Daltile Famed  
Diamond FM10 12" x 24"  
Polished (Porcelain) / Install 1/3  
Offset Horizontally / Grout: 38  
Avalanche



Emtek Freestone 2"  
Bar Cabinet Knob  
Model:86727US4 /  
Finish: Satin Brass

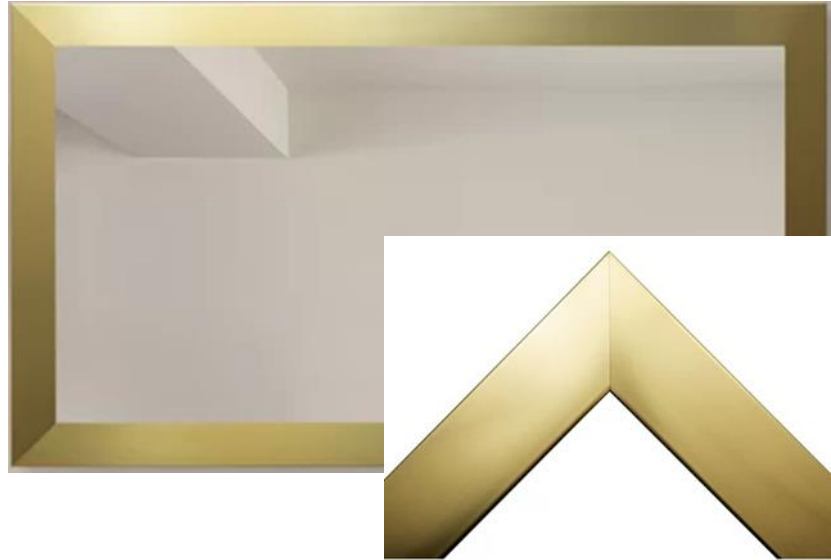


**Extra White**

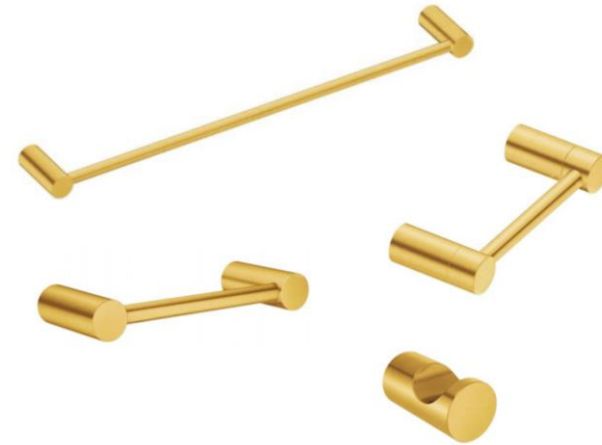
Harbinger Shaker  
Cabinets



Finish Edges with  
White PVC Schluter



Culpeper Modern & Contemporary Vanity Mirror with 3"W Wood (MDF) Frame by Three Posts 49.5"WX39"H / Finish: Brushed Gold



Moen Align 24" Bar YB0424, TP YB0408, Hand Towel Bar YB0486, Robe Hook YB0403 / Finish: Brushed Gold

# Bath 3



Moen Align Widespread Faucet  
T6193BG / Finish: Brushed Gold



Emtek Freestone 5" Center to Center Bar Cabinet Pull  
Model:86676US4 / Finish: Satin Brass



Counter: AZT Bianco Levanto (Quartz)



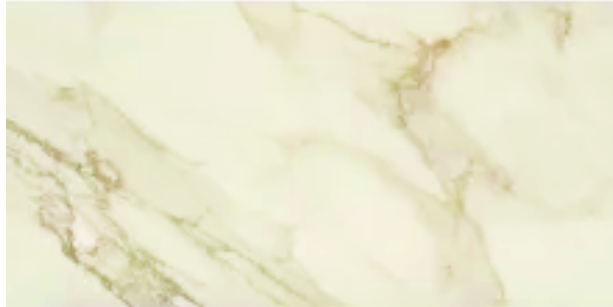
Emtek Freestone 2" Bar Cabinet Knob  
Model:86727US4 / Finish: Satin Brass



Hudson Valley Lighting Ryan 17 1/2"W 3-Light Wedge Xenon Vanity Fixture Model #HUDH239303AGB | Item #7549216 / Finish: Aged Brass / G9 Xenon/Krypton Bulbs Included (3)



Moen Align Valve Trim Only with Single Lever Handle & Integrated Diverter - Less Rough In  
Model:UT3293EPBG / Finish: Brushed Gold



Floor Tile: Daltile Famed Diamond FM10 12" x 24" Matte (Porcelain) / Install 1/3 Offset / Grout: 38 Avalanche



Shampoo Niche Accent: Daltile Famed Diamond FM10 1" Penny Mosaic Matte (Ceramic) / Install Straight Lay on Main (Back) Wall of Niche / Grout: 38 Avalanche



Shower Wall Tile: Daltile Famed Diamond FM10 12" x 24" Polished (Por.) / Install 1/3 Offset Horizontally / Grout: 38 Avalanche / Finish Edges with White PVC Schluter

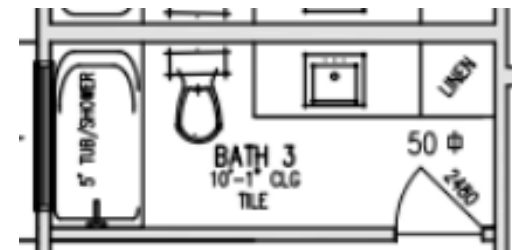


Culpeper Modern & Contemporary Vanity Mirror with 3"W Wood (MDF) Frame by Three Posts 49.5"Wx39"H / Finish: Brushed Gold



Moen Align 24" Bar YB0424, TP YB0408, Hand Towel Bar YB0486, Robe Hook YB0403 / Finish: Brushed Gold

US-2015 Rectangular Sink 20"X15"



Extra White

Harbinger Shaker Cabinets

# Bath 4



Moen Align Widespread Faucet T6193BG / Finish: Brushed Gold



Emtek Freestone 5" Center to Center Bar Cabinet Pull Model:86676US4 / Finish: Satin Brass



Counter: AZT Bianco Levanto (Quartz)



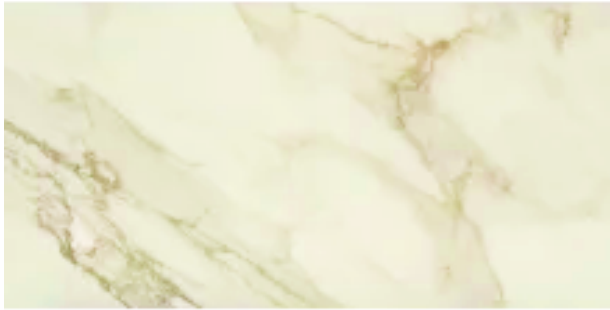
Emtek Freestone 2" Bar Cabinet Knob Model:86727US4 / Finish: Satin Brass



Hudson Valley Lighting Ryan 17 1/2"W 3-Light Wedge Xenon Vanity Fixture Model #HUDH239303AGB | Item #7549216 / Finish: Aged Brass / G9 Xenon/Krypton Bulbs Included (3)



Moen Align Valve Trim Only with Single Lever Handle & Integrated Diverter - Less Rough In Model:UT3293EPBG / Finish: Brushed Gold



Floor Tile: Daltile Famed Diamond FM10 12" x 24" Matte (Porcelain) / Install 1/3 Offset / Grout: 38 Avalanche



Shampoo Niche Accent: Daltile Famed Diamond FM10 1" Penny Mosaic Matte (Ceramic) / Install Straight Lay on Main (Back) Wall of Niche / Grout: 38 Avalanche



Shower Wall Tile: Daltile Famed Diamond FM10 12" x 24" Polished (Por.) / Install 1/3 Offset Horizontally / Grout: 38 Avalanche / Finish Edges with White PVC Schluter



Harbinger Shaker Cabinets

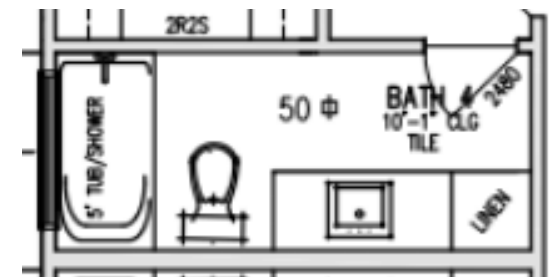
Culpeper Modern & Contemporary Vanity Mirror with 3"W Wood (MDF) Frame by Three Posts 49.5"WX39"H / Finish: Brushed Gold



Moen Align 24" Bar YB0424, TP YB0408, Hand Towel Bar YB0486, Robe Hook YB0403 / Finish: Brushed Gold



US-2015 Rectangular Sink 20"X15"



Extra White

# Bath 5



Moen Align Widespread Faucet T6193BG / Finish: Brushed Gold



Emtek Freestone 5" Center to Center Bar Cabinet Pull Model:86676US4 / Finish: Satin Brass



Counter: AZT Bianco Levanto (Quartz)



Emtek Freestone 2" Bar Cabinet Knob Model:86727US4 / Finish: Satin Brass



Hudson Valley Lighting Ryan 17 1/2"W 3-Light Wedge Xenon Vanity Fixture Model #HUDH239303AGB | Item #7549216 / Finish: Aged Brass / G9 Xenon/Krypton Bulbs Included (3)



Moen Align Valve Trim Only with Single Lever Handle & Integrated Diverter - Less Rough In Model:UT3293EPBG / Finish: Brushed Gold



Floor Tile: Daltile Famed Diamond FM10 12" x 24" Matte (Porcelain) / Install 1/3 Offset / Grout: 38 Avalanche



Shampoo Niche Accent: Daltile Famed Diamond FM10 1" Penny Mosaic Matte (Ceramic) / Install Straight Lay on Main (Back) Wall of Niche / Grout: 38 Avalanche



Shower Wall Tile: Daltile Famed Diamond FM10 12" x 24" Polished (Por.) / Install 1/3 Offset Horizontally / Grout: 38 Avalanche / Finish Edges with White PVC Schluter



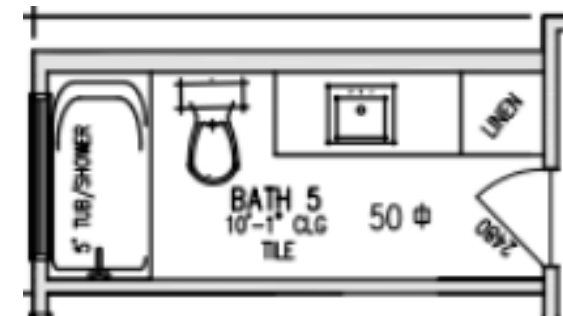
US-2015 Rectangular Sink 20"X15"



Culpeper Modern & Contemporary Vanity Mirror with 3"W Wood (MDF) Frame by Three Posts 49.5"WX39"H / Finish: Brushed Gold



Moen Align 24" Bar YB0424, TP YB0408, Hand Towel Bar YB0486, Robe Hook YB0403 / Finish: Brushed Gold



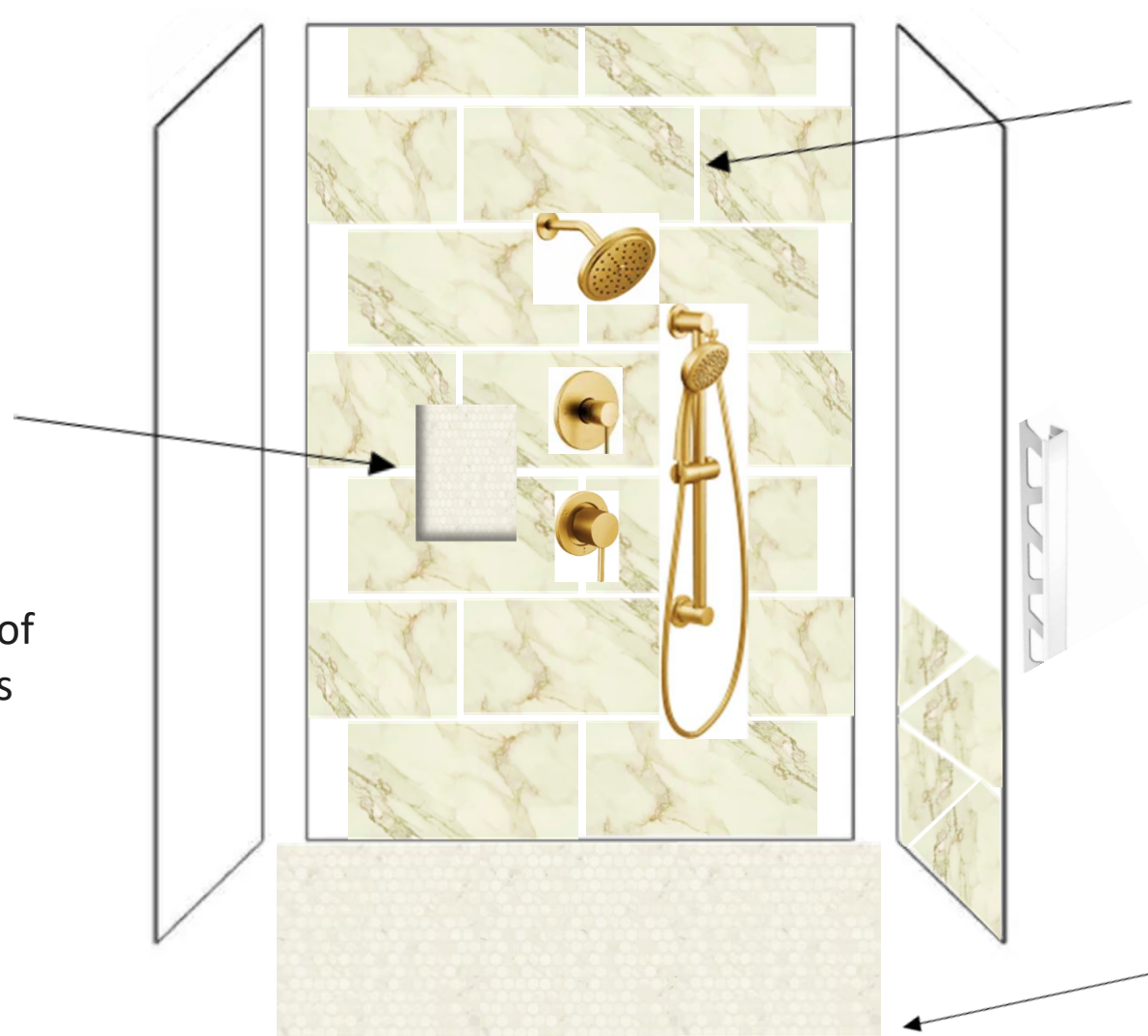
Extra White

Harbinger Shaker Cabinets

## Dog Wash (2 Car Garage)

**Note:** Drawing  
is Not to Scale

**Shampoo Niche Accent:**  
Daltile Famed Diamond  
FM10 1" Penny Mosaic  
Matte (Ceramic) / Install  
Straight Lay on Back Wall of  
Niche & wrap Inside Edges  
with Daltile Famed  
Diamond FM10 Polished  
cut Pieces of Tile. Finish  
Edges with White PVC  
Schluter Trim / Install on  
Left of Main Wall below  
Shower-head / Grout: 38  
Avalanche



**Shower Wall Tile:**  
Daltile Famed Diamond  
FM10 12" x 24" Polished  
(Porcelain) / Install 1/3  
Offset Horizontally & take  
Tile up to Ceiling. Finish  
Edges with White PVC  
Schluter Trim / Grout: 38  
Avalanche

**Shower Floor** Daltile Famed  
Diamond FM10 1" Penny  
Mosaic Matte (Ceramic) /  
Install Straight Lay / Grout:  
38 Avalanche



# Primary Bath Shower

**Note:** Drawing is Not to Scale

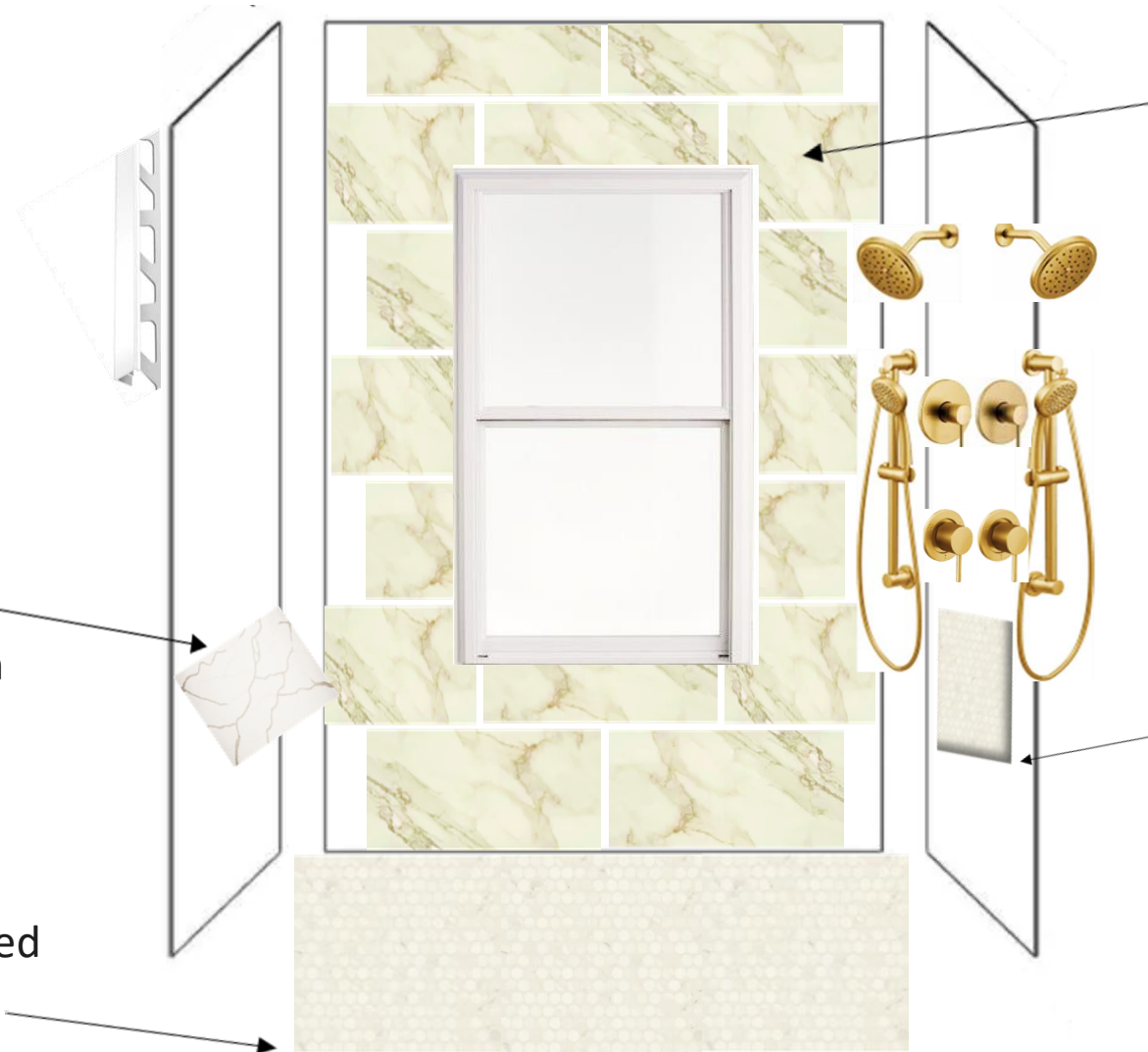
## Shower Bench (Top):

AZT Bianco Levanto  
3 CM (Quartz)

## Shower Bench Sides:

Daltile Famed Diamond  
FM10 12" x 24" Polished  
(Porcelain) / Install 1/3  
Offset Horizontally. Finish  
Edges with White PVC  
Schluter Trim / Grout: 38  
Avalanche

**Shower Floor** Daltile Famed  
Diamond FM10 1" Penny  
Mosaic Matte (Ceramic) /  
Install Straight Lay / Grout:  
38 Avalanche



## Shower Wall Tile:

Daltile Famed Diamond  
FM10 12" x 24" Polished  
(Porcelain) / Install 1/3  
Offset Horizontally & take  
Tile up to Ceiling. Finish  
Edges with White PVC  
Schluter Trim / Grout: 38  
Avalanche

## Shampoo Niche Accent:

Daltile Famed Diamond FM10  
1" Penny Mosaic Matte  
(Ceramic) / Install Straight Lay  
on Back Wall of Niche & wrap  
Inside Edges with Daltile  
Famed Diamond FM10  
Polished with cut Pieces of  
Tile. Finish Edges with White  
PVC Schluter Trim / Install on  
Right Wall below Shower-  
head & Plumbing Fixtures /  
Grout: 38 Avalanche

## Primary Bath Tub Surround

**Note:** Drawing  
is Not to Scale

### Floating Tub Tile:

Daltile Famed Diamond  
FM10 12" x 24" Polished  
(Porcelain) / Install  $\frac{1}{3}$   
Offset Horizontally,  
approximately 1'H above  
Floating Tub (Tub Height:  
23-5/8" ) -- 35 5/8"H. Finish  
Edges with White PVC  
Schluter Trim / Grout: 38  
Avalanche



## Bath 2 Shower

**Note:** Drawing  
is Not to Scale

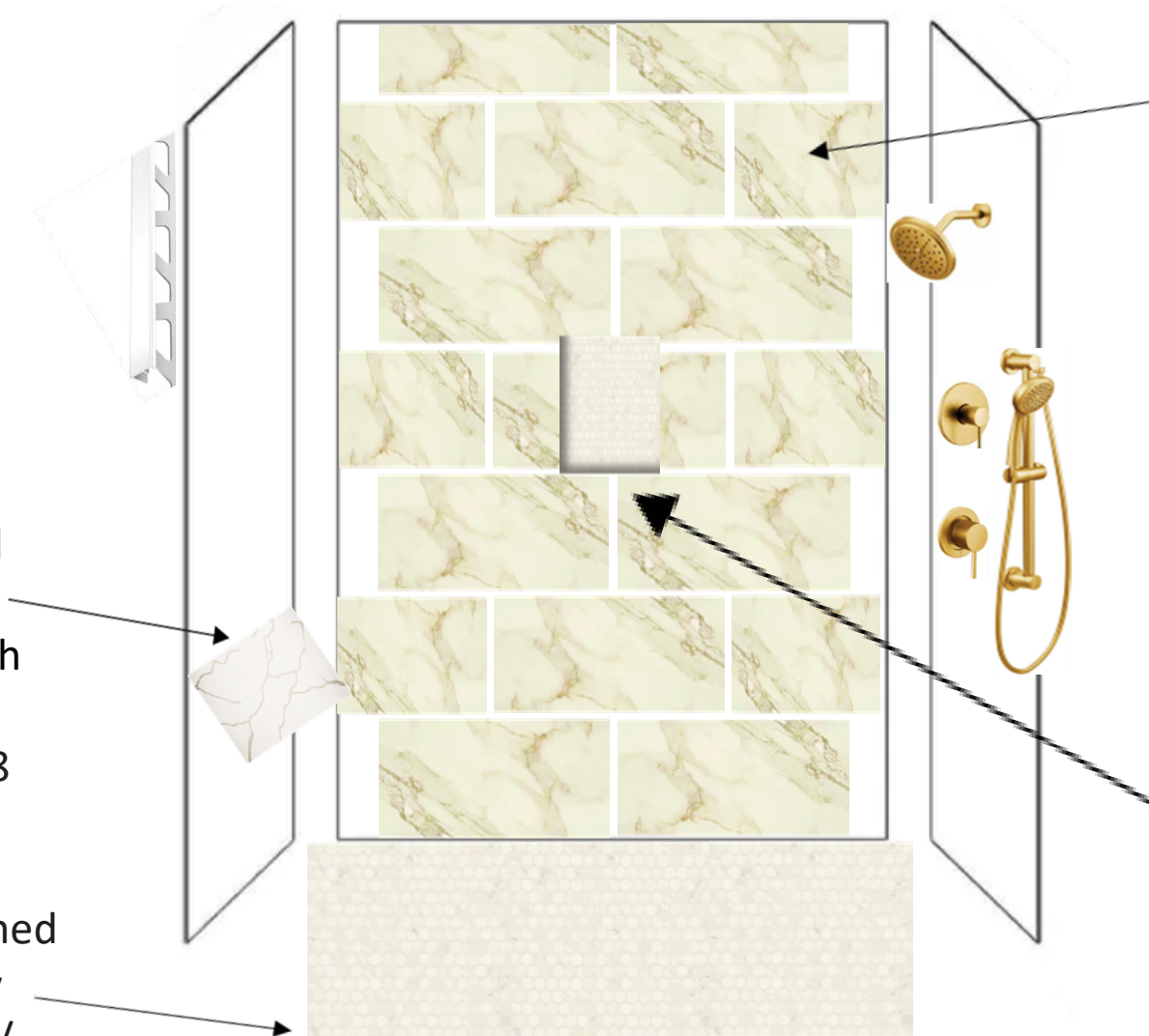
### Shower Bench (Top):

AZT Bianco Levanto  
3 CM (Quartz)

### Shower Bench Sides:

Daltile Famed Diamond  
FM10 12" x 24" Polished  
(Porcelain) / Install 1/3  
Offset Horizontally. Finish  
Edges with White PVC  
Schluter Trim / Grout: 38  
Avalanche

**Shower Floor** Daltile Famed  
Diamond FM10 1" Penny  
Mosaic Matte (Ceramic) /  
Install Straight Lay / Grout:  
38 Avalanche



### Shower Wall Tile:

Daltile Famed Diamond  
FM10 12" x 24" Polished  
(Porcelain) / Install 1/3  
Offset Horizontally & take  
Tile up to Ceiling. Finish  
Edges with White PVC  
Schluter Trim / Grout: 38  
Avalanche

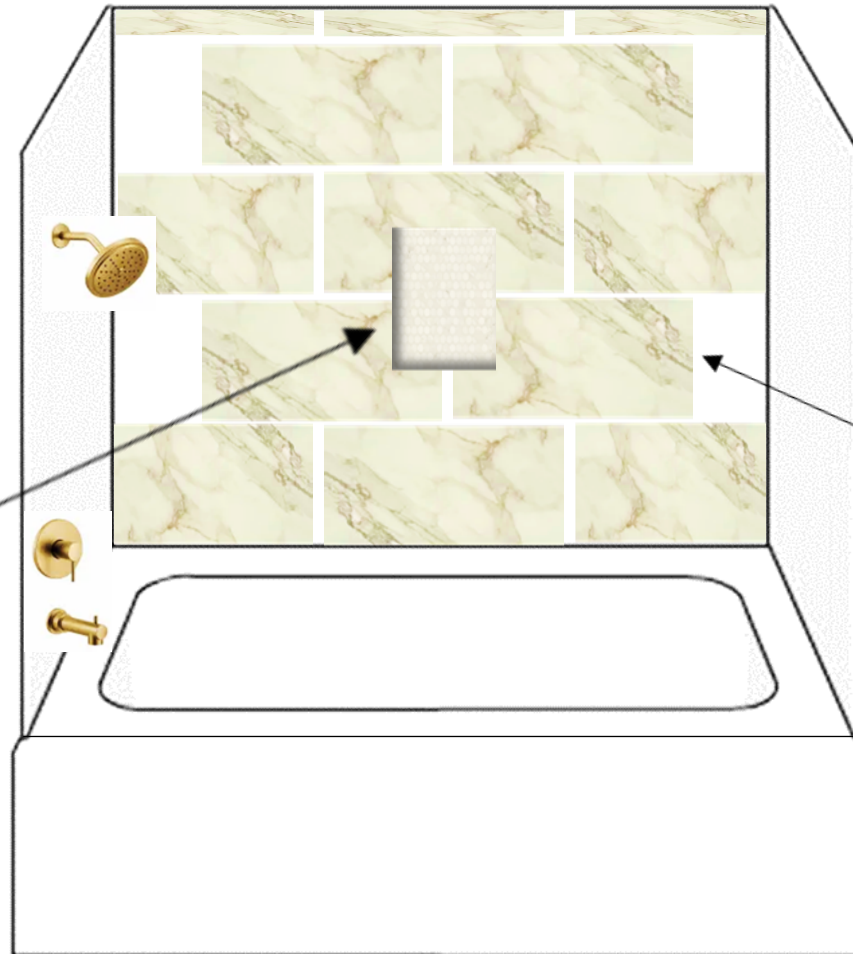
### Shampoo Niche Accent:

Daltile Famed Diamond FM10  
1" Penny Mosaic Matte  
(Ceramic) / Install Straight Lay  
on Back Wall of Niche & wrap  
Inside Edges with Daltile  
Famed Diamond FM10  
Polished with cut Pieces of  
Tile. Finish Edges with White  
PVC Schluter Trim / Install on  
Middle of Main Wall below  
Shower-head / Grout: 38  
Avalanche

## Bath 3 Shower

**Note:** Drawing  
is Not to Scale

**Shampoo Niche Accent:**  
Daltile Famed Diamond FM10  
1" Penny Mosaic Matte  
(Ceramic) / Install Straight Lay  
on Back Wall of Niche & wrap  
Inside Edges with Daltile  
Famed Diamond FM10  
Polished cut Pieces of Tile.  
Finish Edges with White PVC  
Schluter Trim / Install on  
Middle of Main Wall below  
Shower-head / Grout: 38  
Avalanche



### Shower Wall Tile:

Daltile Famed Diamond  
FM10 12" x 24" Polished  
(Porcelain) / Install 1/3  
Offset Horizontally & take  
Tile up to Ceiling. Finish  
Edges with White PVC  
Schluter Trim / Grout: 38  
Avalanche

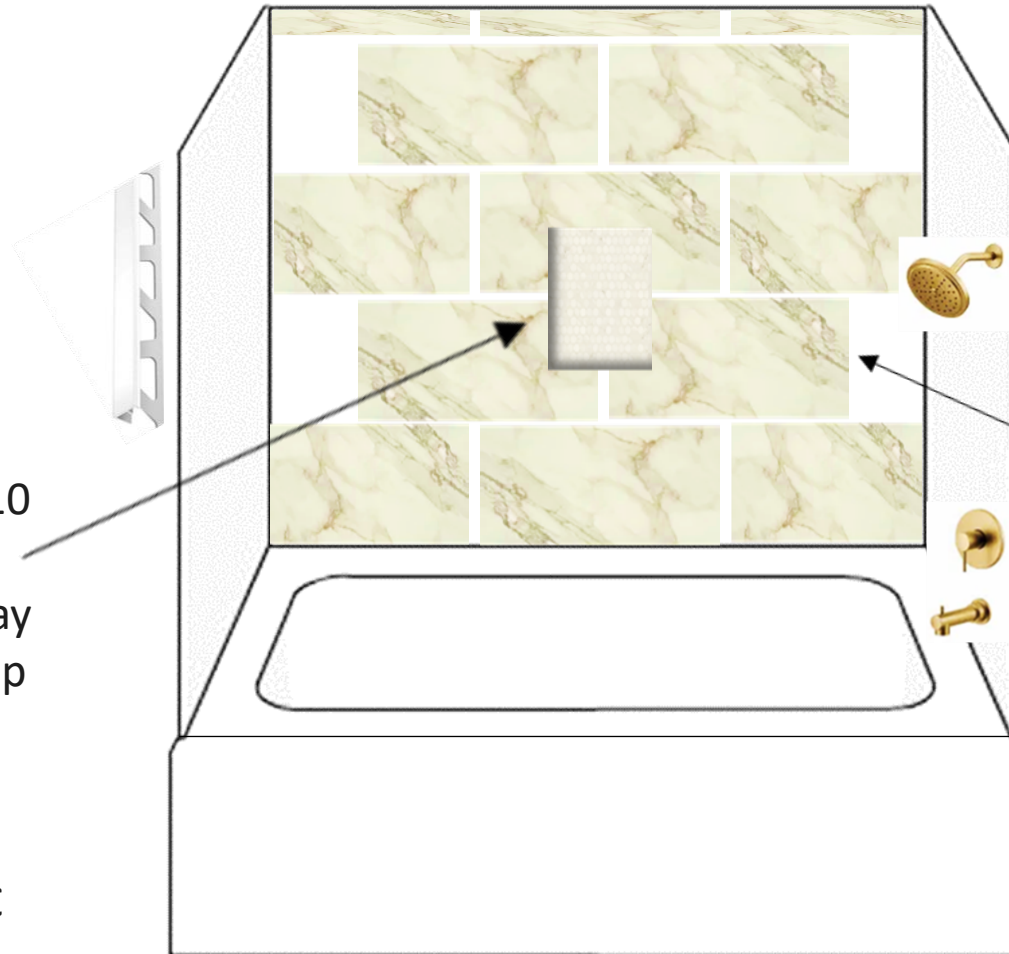
## Bath 4

### Shower

**Note:** Drawing is Not to Scale

#### Shampoo Niche Accent:

Daltile Famed Diamond FM10 1" Penny Mosaic Matte (Ceramic) / Install Straight Lay on Back Wall of Niche & wrap Inside Edges with Daltile Famed Diamond FM10 Polished cut Pieces of Tile. Finish Edges with White PVC Schluter Trim / Install on Middle of Main Wall below Shower-head / Grout: 38 Avalanche



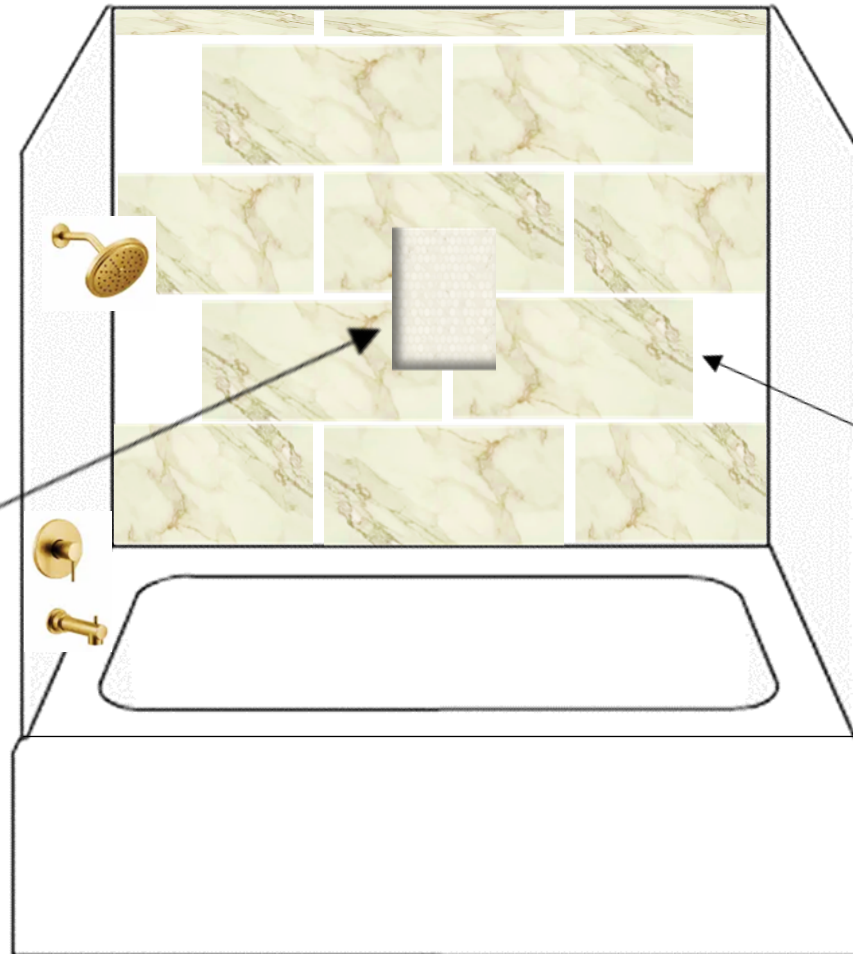
#### Shower Wall Tile:

Daltile Famed Diamond FM10 12" x 24" Polished (Porcelain) / Install 1/3 Offset Horizontally & take tile up to Ceiling. Finish Edges with White PVC Schluter Trim / Grout: 38 Avalanche

# Bath 5 Shower

**Note:** Drawing  
is Not to Scale

**Shampoo Niche Accent:**  
Daltile Famed Diamond FM10  
1" Penny Mosaic Matte  
(Ceramic) / Install Straight Lay  
on Back Wall of Niche & wrap  
Inside Edges with Daltile  
Famed Diamond FM10  
Polished cut Pieces of Tile.  
Finish Edges with White PVC  
Schluter Trim / Install on  
Middle of Main Wall below  
Shower-head / Grout: 38  
Avalanche



**Shower Wall Tile:**  
Daltile Famed Diamond  
FM10 12" x 24" Polished  
(Porcelain) / Install 1/3  
Offset Horizontally & take  
Tile up to Ceiling. Finish  
Edges with White PVC  
Schluter Trim / Grout: 38  
Avalanche