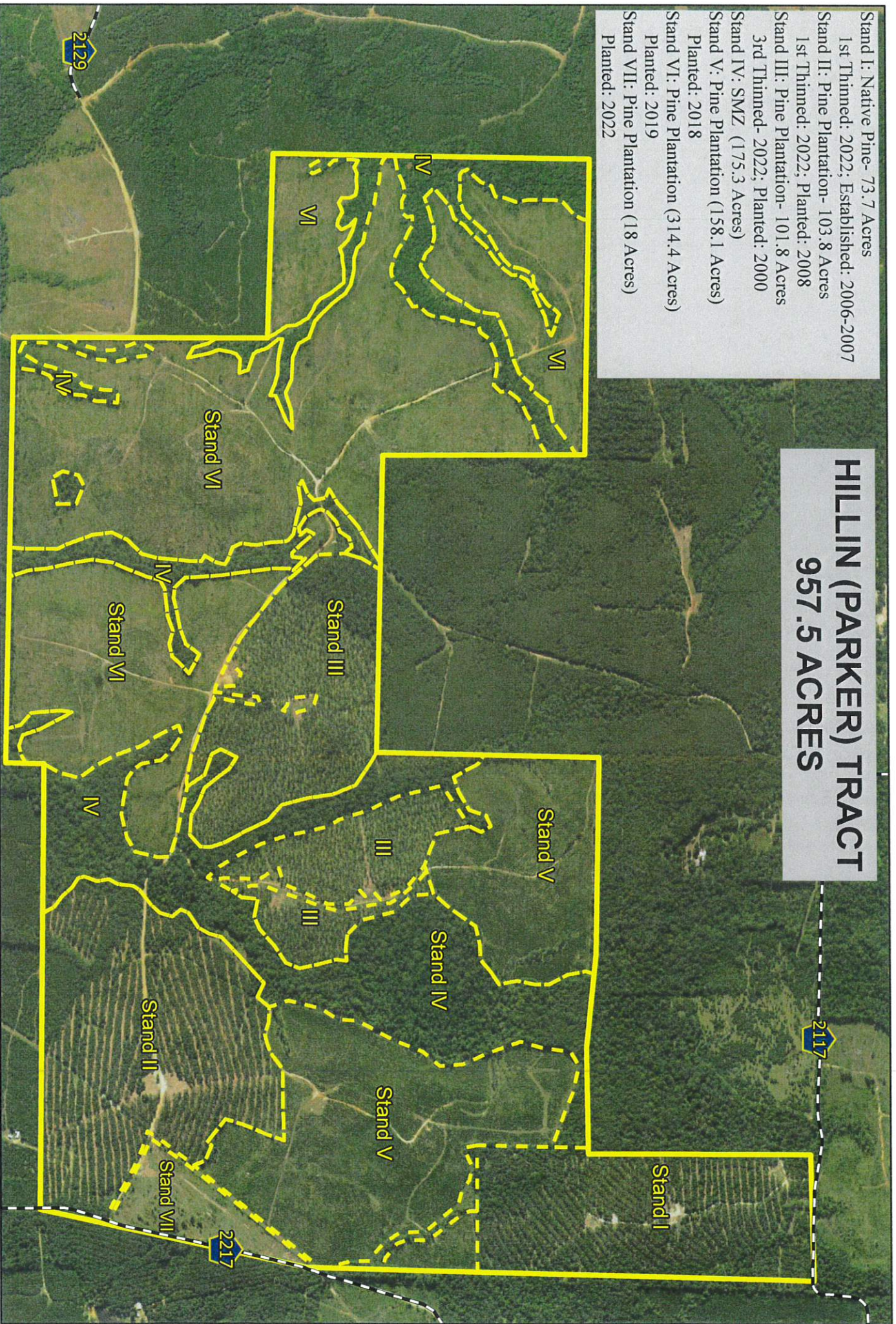


# HILLIN (PARKER) TRACT 957.5 ACRES

- Stand I: Native Pine- 73.7 Acres
- 1st Thinned: 2022; Established: 2006-2007
- Stand II: Pine Plantation- 103.8 Acres
- 1st Thinned: 2022; Planted: 2008
- Stand III: Pine Plantation- 101.8 Acres
- 3rd Thinned- 2022; Planted: 2000
- Stand IV: SMZ (175.3 Acres)
- Stand V: Pine Plantation (158.1 Acres)
- Planted: 2018
- Stand VI: Pine Plantation (314.4 Acres)
- Planted: 2019
- Stand VII: Pine Plantation (18 Acres)
- Planted: 2022



**Farmers  
National  
Company  
Forestry**

J. Parker Survey, A-686; T. S. Parker Survey, A-683;  
J. S. H. Middleton Survey, A-612; R. T. Bowden Survey, A-118  
Cherokee County, Texas



2022 Summer Aerial Photo  
Leaf-On, Natural Color  
31.740099° -95.274131° Coordinates  
FNC-FRMD-(2/14/2023)-JO  
MSchmitt@farmersnational.com  
(903)586-9375