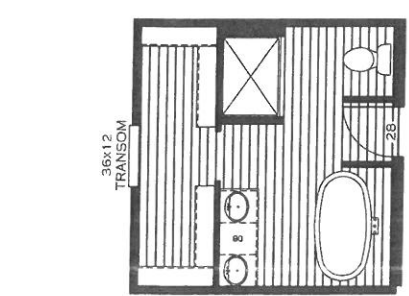
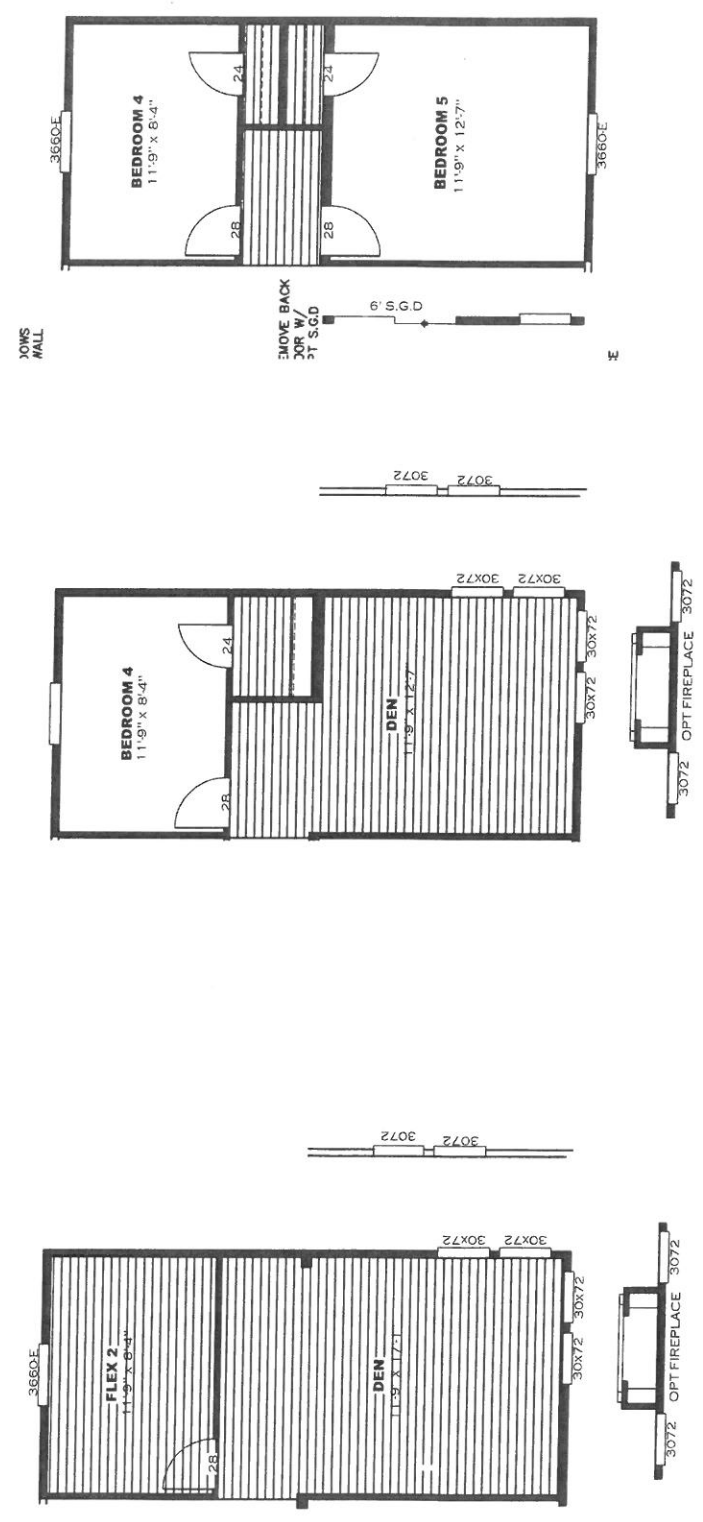


MODEL # 38CLB28683AH 28'x68' STERLING XL



OPT WINDOW LOCATION IPO SIDEWALL

REMOVE W/ OPT ENDWALL WINDOWS

REMOVE BACK DOOR W/ OPT S.G.D

REMOVE W/ OPT ENDWALL WINDOWS

REMOVE BACK DOOR W/ OPT S.G.D

REMOVE W/ OPT ENDWALL WINDOWS

REMOVE W/ OPT ENDWALL WINDOWS

REMOVE W/ OPT ENDWALL WINDOWS

REMOVE W/ OPT ENDWALL WINDOWS

REMOVE W/ OPT ENDWALL WINDOWS

REMOVE W/ OPT ENDWALL WINDOWS

REMOVE W/ OPT ENDWALL WINDOWS

REMOVE W/ OPT ENDWALL WINDOWS

REMOVE W/ OPT ENDWALL WINDOWS

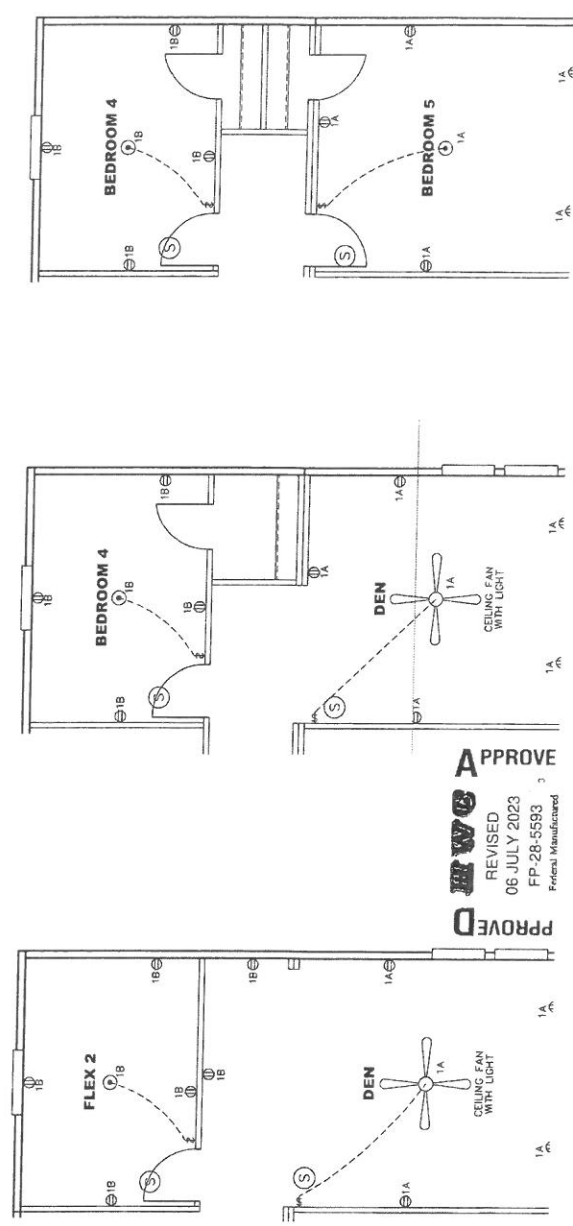
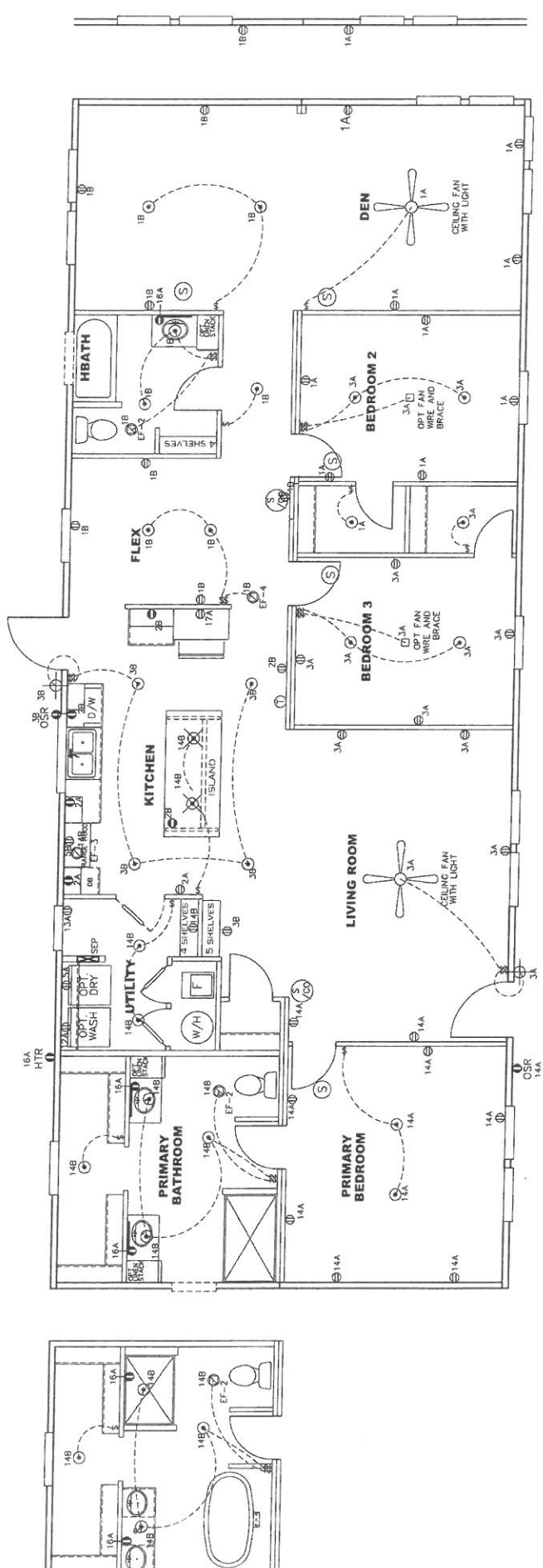
REMOVE W/ OPT ENDWALL WINDOWS

REMOVE W/ OPT ENDWALL WINDOWS

REMOVE W/ OPT ENDWALL WINDOWS

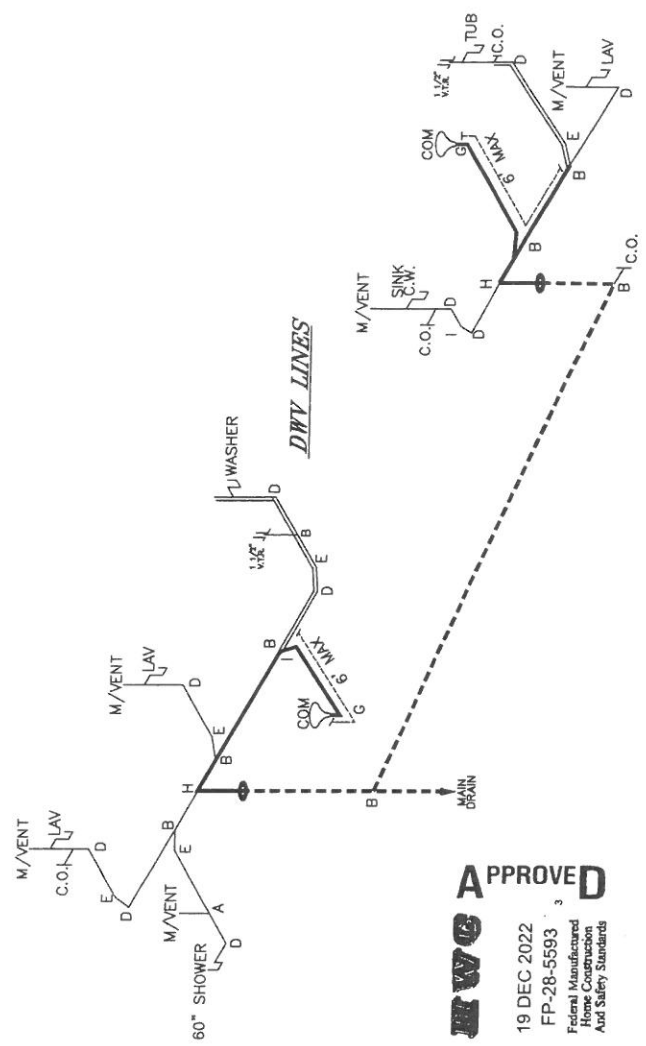
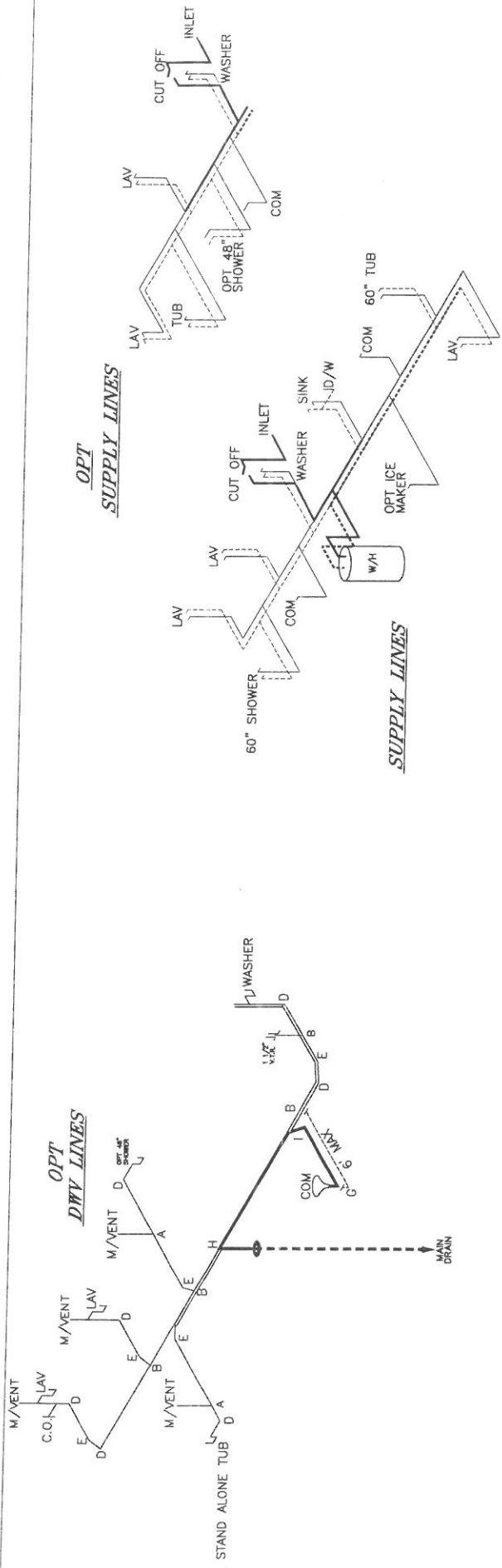
REMOVE W/ OPT ENDWALL WINDOWS

2A, 2B	20-SP	12-2	20-SP
12A	20-SP	9B	SEE NOTE #8
5A, 7B	SEE NOTE #8	11A, B	SEE NOTE #8
17A	12-2	13A	12-2
	20-SP		20-SP



ES:
 ALL CIRCUITS SHOWN ARE FOR REFERENCE AND MAY BE CHANGED BASED ON OPTIONAL COMPONENTS INSTALLED IN THE HOME.
 REFER TO DAPIA MANUAL FOR SYMBOL CHART.
 EITHER LIGHT OR RECEPTACLE MUST CONNECT TO SWITCH.
 EF-1= 50 CFM EXHAUST FAN REQUIRED FOR THERMAL ZONE I, THERMAL ZONES I & II MAY USE FAN OR WINDOW W/1.5 SQ. FT. OPENABLE GLASS.
 EF-2= 50 CFM EXHAUST FAN REQUIRED THERMAL ZONE I, II, AND III.
 EF-3= 100 CFM RANGE EXHAUST FAN, SWITCH AT HOOD.
 EF-4= WHOLE HOUSE VENTILATION REQUIREMENTS PER DAPIA MANUAL.
 REFER TO DAPIA MANUAL OR THE MFG. INSTALLATION INSTRUCTIONS FOR PROPER WIRE SIZE AND BREAKER SIZE FOR SPECIFIC APPLIANCE AND MODEL BEING INSTALLED.
 ALL SMOKE ALARMS TO BE LOCATED ON THE CEILING.
 CARBON MONOXIDE ALARMS ARE ONLY REQUIRED WHEN HOME HAS EITHER FUEL BURNING APPLIANCE, IS GARAGE READY OR SUBBASEMENT READY. REFERENCE DAPIA MANUAL FOR ADDITIONAL INFORMATION.

APPROVED
 REVISED
 06 JULY 2023
 FP-28-5593
 Forever Manufactured



DWV LINE SIZE CHART

Thick line	= 3"
Medium line	= 2"
Thin line	= 1 1/2"

LEGEND

A	SHORT TURN T-Y
B	LONG TURN T-Y
C	1/4 BEND
D	LONG SWEEP 1/4 BEND
E	45° ELL
F	DBL. SANITARY TEE
G	4x3 CLOSET ELL
H	DOUBLE ELL
I	22 1/2° ELL
J	45° Y
K	LONG TURN STREET ELBOW
L	45° FTG ELL

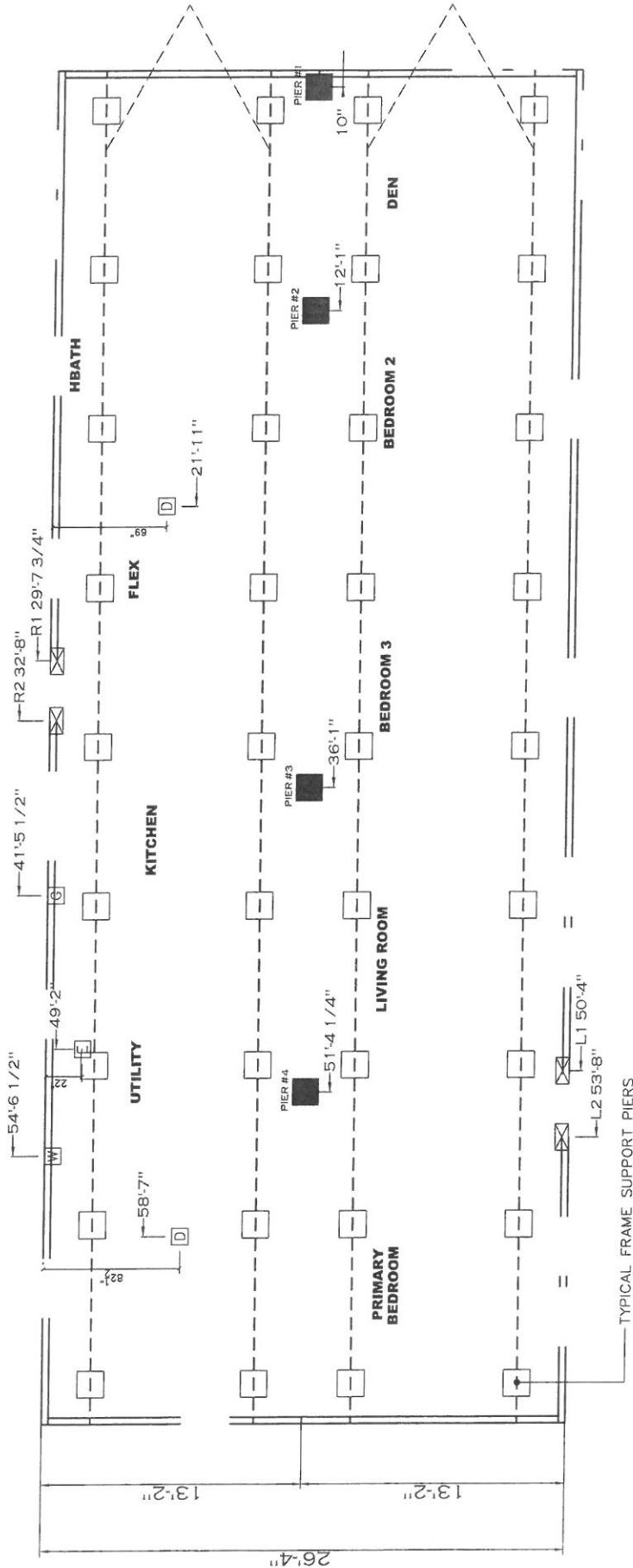
APPROVED
RWC
 19 DEC 2022
 FP-28-5593
 Federal Manufacture
 Home Construction
 And Safety Standards

ALL LINES 1/2" UNLESS NOTED OTHERWISE
 CLASSIC LINES INDICATE HOT WATER
 SOLID LINES INDICATE COLD WATER
 --- = 3/4"
 --- = 1/2"

40 psf Roof Live Load		
Column	Distance from Hitch	Pier Load (lbs)
1	0.833	5420
2	12.083	5420
3	36.083	6819
4	51.583	6819

30 psf Roof Live Load		
Column	Distance from Hitch	Pier Load (lbs)
1	0.833	4416
2	12.083	4416
3	36.083	5535
4	51.583	5535

20 psf Roof Live Load		
Column	Distance from Hitch	Pier Load (lbs)
1	0.833	2622
2	12.083	2622
3	36.083	3461
4	51.583	3461



SERVICE DROP LEGEND

- [E] = ELECTRICAL DROP
- [W] = WATER INLET
- [D] = DWV PLUMBING DROP
- [G] = GAS INLET

PIER LEGEND

- [□] = SUPPORT UNDER MATING OPENING
- [■] = SUPPORT UNDER MATING COLUMN
- [⊞] = SUPPORT UNDER MATING WALL
- [■] = PIER PROX/ACCESSED ENTRY
- [□] = PIER MAIN BEAM
- [⊞] = PIER PERIMETER
- [●] = TIE-DOWN SUPPORT (SEE PER. FOR DETAIL)
- [●] = M. SEE DETAIL D-5 IN FRAMA PKG.

GENERAL NOTES:
 PIER LOCATIONS SHOWN ARE TO BE USED TO SIZE THE FOOTINGS BELOW THE WALLS AND 60" IN COLUMN SUPPORT PIERS. REFER TO TABLES 6b AND 6c IN THE FOUNDATION MANUAL FOR LOAD ON FRAME PIER FOOTINGS FOR HOWL, TABLE 7a AND NOT REQUIRE PERIMETER BLOCKING. REFER TO TABLES 7b AND 7c IN THE INSTALLATION MANUAL FOR LOAD ON FRAME PIER FOOTINGS THAT REQUIRE PERIMETER BLOCKING. REFER TO TABLES 10 AND 10a TO DETERMINE FOOTING SIZE FOR ALL PIERS.
 REFER TO TABLE 9 FOR PIER CONFIGURATION AND MAXIMUM ALLOWABLE HEIGHTS. CROSS REFERENCE THE PIER HEIGHT WITH THE MAXIMUM ALLOWABLE PIER HEIGHT LISTED IN THE FRAME TIEDOWN CHARTS (TABLE 18 AND 19).
 FLOOR WIDTH SHOWN IS FOR STANDARD PRODUCT ONLY. CONTACT THE MFG. PLAN FOR SPECIFICATIONS OF OPTIONS ORDERED.
 SERVICE DROP LOCATIONS IDENTIFIED ARE APPROXIMATE. THE MAXIMUM SPACING FOR FRAME SUPPORT PIERS FOR 8" I-BEAMS IS 8 FEET, 10" & 12" I-BEAMS ARE 10 FEET.

elev.

Product Designer: BOWERS, J
Drawing #: 38m164
Model #: CLB28683AH 28' x 68' STERLING XL
Scale: NTS
Sq. Ft.: 1790
Date: 12/1/2022
REVISION
REV: 12/6/2022 9:12 AM

