

Clayton EPIC - Addison (943) & Nashville (976)

WIND ZONE	1	2	3
SW A	250 PLF @ 98"	420 PLF @ 152"	500 PLF @ 154"
SW B	N/A	N/A	N/A
SW C	N/A	N/A	N/A
SW D	250 PLF @ 98"	420 PLF @ 152"	500 PLF @ 154"
SW E	N/A	N/A	N/A

Blocked Diaphragm Wind Zone III Only

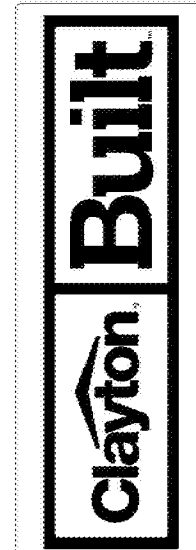
Clayton EPIC - Ft. Worth (945)

WIND ZONE	1	2	3
SW A	210 PLF @ 117"	425 PLF @ 150"	425 PLF @ 158"
SW B	N/A	N/A	425 PLF @ 23"
SW C	N/A	N/A	425 PLF @ 23"
SW D	210 PLF @ 117"	425 PLF @ 150"	425 PLF @ 158"
SW E	N/A	N/A	N/A

Blocked Diaphragm Wind Zone III Only

EPIC-CE-M026-68-4.1

*ALL BEDROOMS ARE UNDER 35' FOR EGRESS



REVISION	DATE

MODEL NAME: Morocco
 MODEL NO: CEA28684AH
 BOX SIZE: 28' x 68'
 MODEL SQ. FT.: 1,791

DRAWN BY: Alex Whaley

DATE DRAWN: 12/12/2019

DATE PRINTED: 8/15/2022

SCALE: 3/16"=1'

PLAN NO: CE-M026-68-4

SHEET NAME: PRIMARY PLAN

SHEET NO: A-1

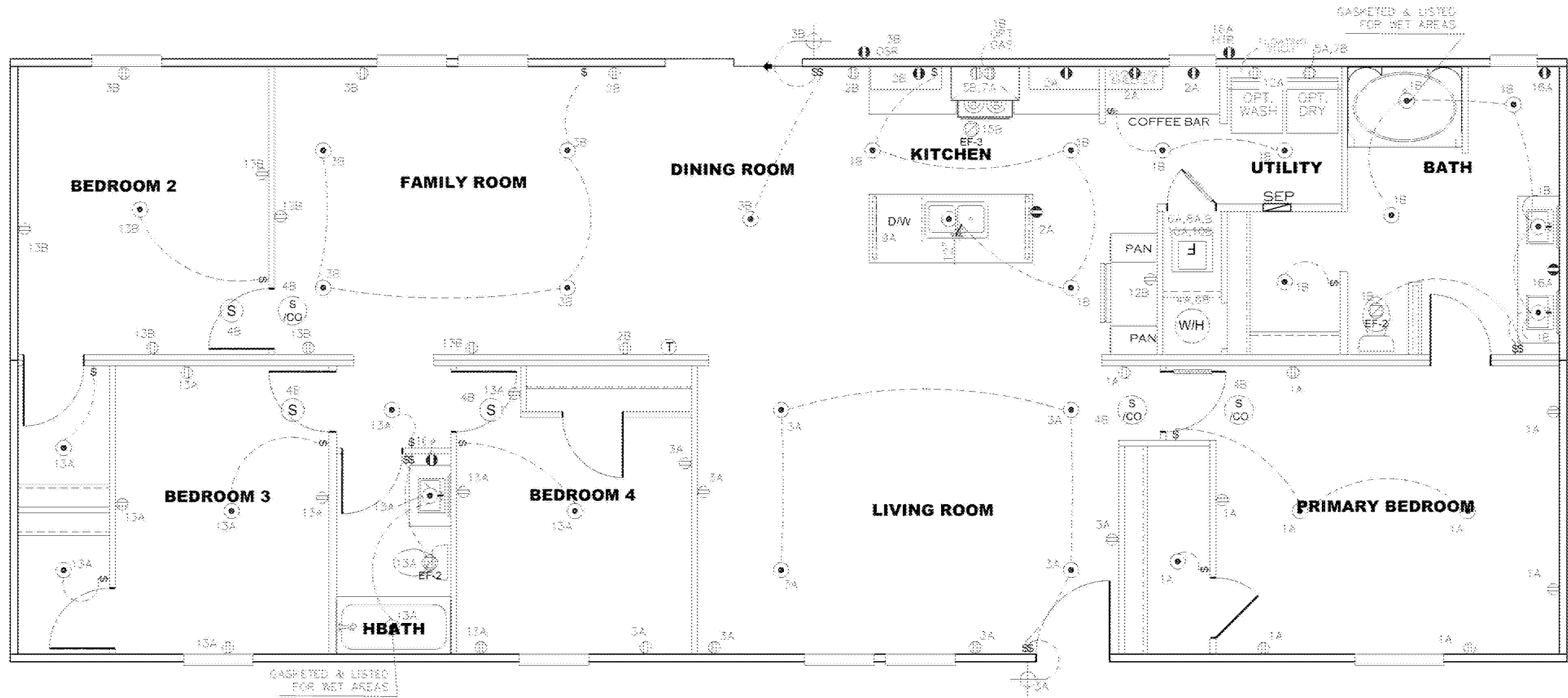
APPROVED BY: NIA INC. FEDERAL MANUFACTURED HOME CONSTRUCTION AND SAFETY STANDARDS

REVISED: 8/17/2022

THIRD PARTY SEAL

File Path: C:\Users\whaley\Desktop\930 Dwg\Adv\Adventure\CE-M026-68-4.dwg, Last Saved By: Whaley, A, Saved Date: 8/15/2022 4:02 PM

CIRCUIT	CIRCUIT #	WIRE	BREAKER	CIRCUIT	CIRCUIT #	WIRE	BREAKER	CIRCUIT	CIRCUIT #	WIRE	BREAKER
LIGHT RECP	1A, 3A, 13A	14-2	15-SP	DRYER	5A, 7B	SEE NOTE #8		BATHROOM	16A	12-2	20-SP
LIG-TRCECP	1B, 3B, 13B	14-2	15-SP	WATER HEATER	4A, 6B	SEE NOTE #8		DPT DRYSP	9B		SEE NOTE #8
KITCHEN	8A, 8B, 8	12-2	20-SP	RANGE	5B, 7A	SEE NOTE #8		GFT EPS W/REC	11A, B		SEE NOTE #8
WASHER	12A	12-2	20-SP	FURNACE	6A, 6A, B, 10A, B	SEE NOTE #8		FREEZER	11, 1A		SEE NOTE #8
RANG HOOD				GFT DWASH	8A	SEE NOTE #8		GFT ELEC FREEZER	11, 7A		SEE NOTE #8
MICROWAVE	15B		SEE NOTE #8	SMOKEREC DETCT	4B	SEE NOTE #8					



NOTES:

- ALL CIRCUITS SHOWN ARE FOR REFERENCE AND MAY BE CHANGED BASES ON OPTIONAL COMPONENTS INSTALLED IN THE HOME.
- REFER TO DAPIA MANUAL FOR SYMBOL CHART.
- EITHER LIGHT OR RECEPTACLE MUST CONNECT TO SWITCH.
- EF-1= 50 CFM EXHAUST FAN REQUIRED FOR THERMAL ZONE III THERMAL ZONES I & II MAY USE FAN OR WINDOW W/1.5 SQ. FT. OPENABLE GLASS.
- EF-2= 60 CFM EXHAUST FAN REQUIRED THERMAL ZONE I, II, AND III.
- EF-3= 100 CFM RANGE EXHAUST FAN, SWITCH AT HOOD.
- EF-4= WHOLE HOUSE VENTILATION REQUIREMENTS PER DAPIA MANUAL.
- REFER TO DAPIA MANUAL OR THE MFG. INSTALLATION INSTRUCTIONS FOR PROPER WIRE SIZE AND BREAKER SIZE FOR SPECIFIC APPLIANCE AND MODEL BEING INSTALLED.
- ALL SMOKE ALARMS TO BE LOCATED ON THE CEILING.
- CARBON MONOXIDE ALARMS ARE ONLY REQUIRED WHEN HOME HAS EITHER FUEL BURNING APPLIANCES, IS GARAGE READY OR IS BASEMENT READY. REFERENCE DAPIA MANUAL FOR ADDITIONAL INFORMATION.
- DIMENSIONS SHOWN ON PRINT ARE APPROXIMATE AND TO BE USED ONLY AS A GUIDELINE.

SYMB	DESCRIPTION	SYMB	DESCRIPTION
⊕	115V RECEPTACLE OUTLET	⊕	EXHAUST FAN
⊕	20 AMP BATH/WO/SH/HTR-GR	⊕	LIGHT/FAN COMBD EF-2
⊕	220V RECEPTACLE OUTLET	⊕	THERMOSTAT
S	SMOKE ALARM	▲	DISHWASHER
CO	CARBON MONOXIDE ALARM	♻️	GARBAGE DISPOSAL
S/CO	COMBD SMOKE/CO ALARM	♻️	JACUZZI
S	SWITCH	⊕	WHIRLPOOL
⊕	CAN LIGHT	⊕	SPA
⊕	LIGHT FIXTURE	GFI	GROUND FAULT INTERRUPTOR
⊕	FLOOD LIGHT FIXTURE	GR	OUTSIDE RECEPTACLE
⊕	REARWHT LIGHT	HTK	HEAT TAPE RECEPTACLE
		P.C.	PULL CHAIN FIXTURE

EPIC-CE-M026-68-4.2

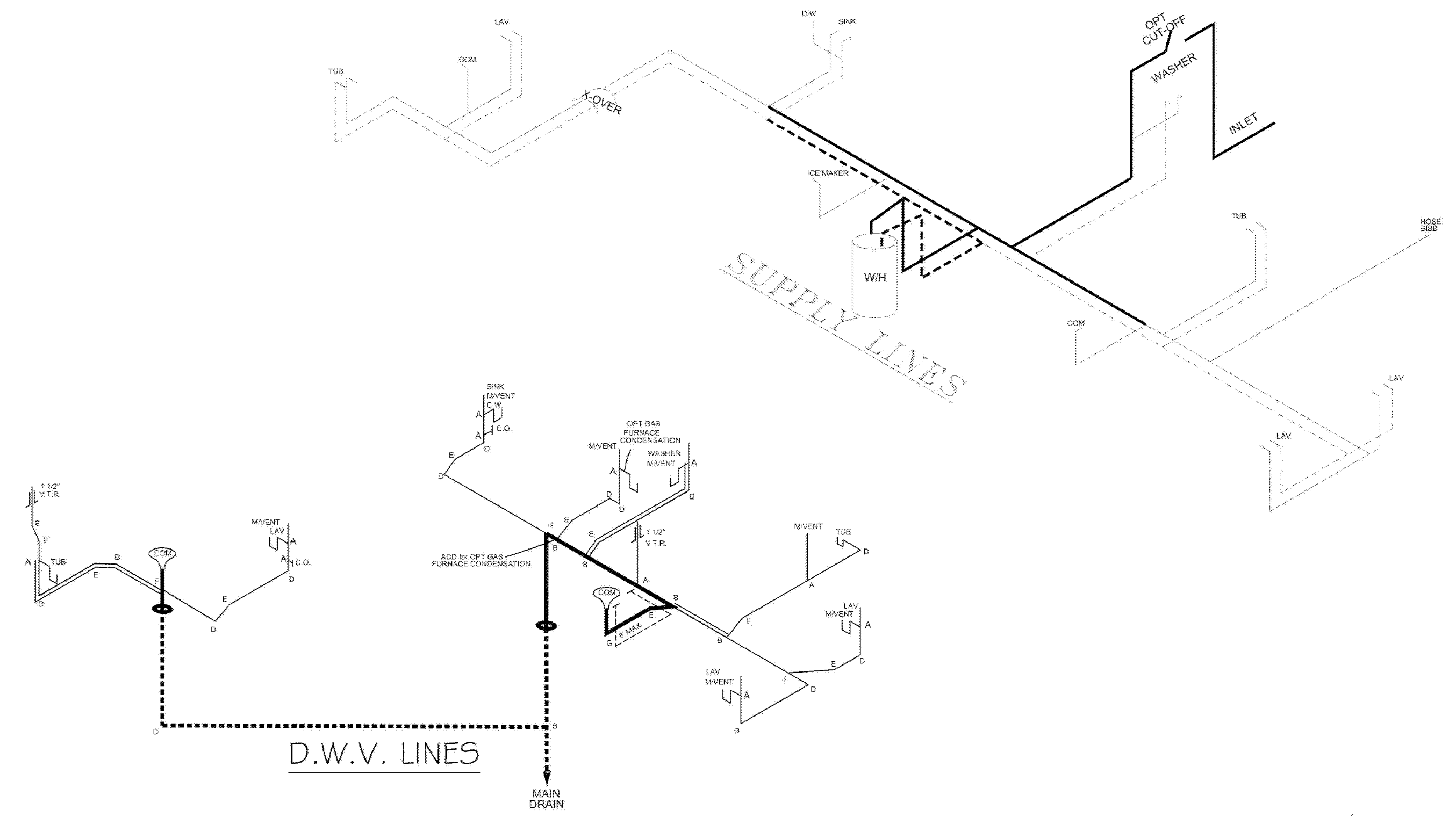
APPROVED BY

 FEDERAL MANUFACTURED HOME CONSTRUCTION AND SAFETY STANDARDS

THIRD PARTY SEAL



MODEL NAME	Morocco
MODEL NO.	CEA28684AH
BOX SIZE	28' x 68'
MODEL SQ. FT.	1,791
DATE	
REVISION	
DRAWN BY	Alex Whaley
DATE DRAWN	12/12/2019
DATE PRINTED	8/15/2022
SCALE	3/16"=1'
PLAN NO.	CE-M026-68-4
SHEET NAME	ELEC PLAN
SHEET NO.	EL-1.



LEGEND	
A	SHORT TURN T-Y
B	LONG TURN T-Y
C	1/4 BEND
D	LONG SWEEP 1/4 BEND
E	45 ELL
F	DBL. SANITARY TEE
G	4x3 CLOSET ELL
H	DOUBLE ELL
I	22 1/2° ELL
J	45° Y
K	LONG TURN STREET ELBOW
L	45 FTG ELL

DWV LINE SIZE CHART	
	= 3"
	= 2"
	= 1 1/2"

NOTE:
 DASHED LINES INDICATE HOT WATER
 SOLID LINES INDICATE COLD WATER



EPIC-CE-M026-68-4.3

APPROVED BY

 FEDERAL MANUFACTURED HOME
 CONSTRUCTION AND SAFETY STANDARDS

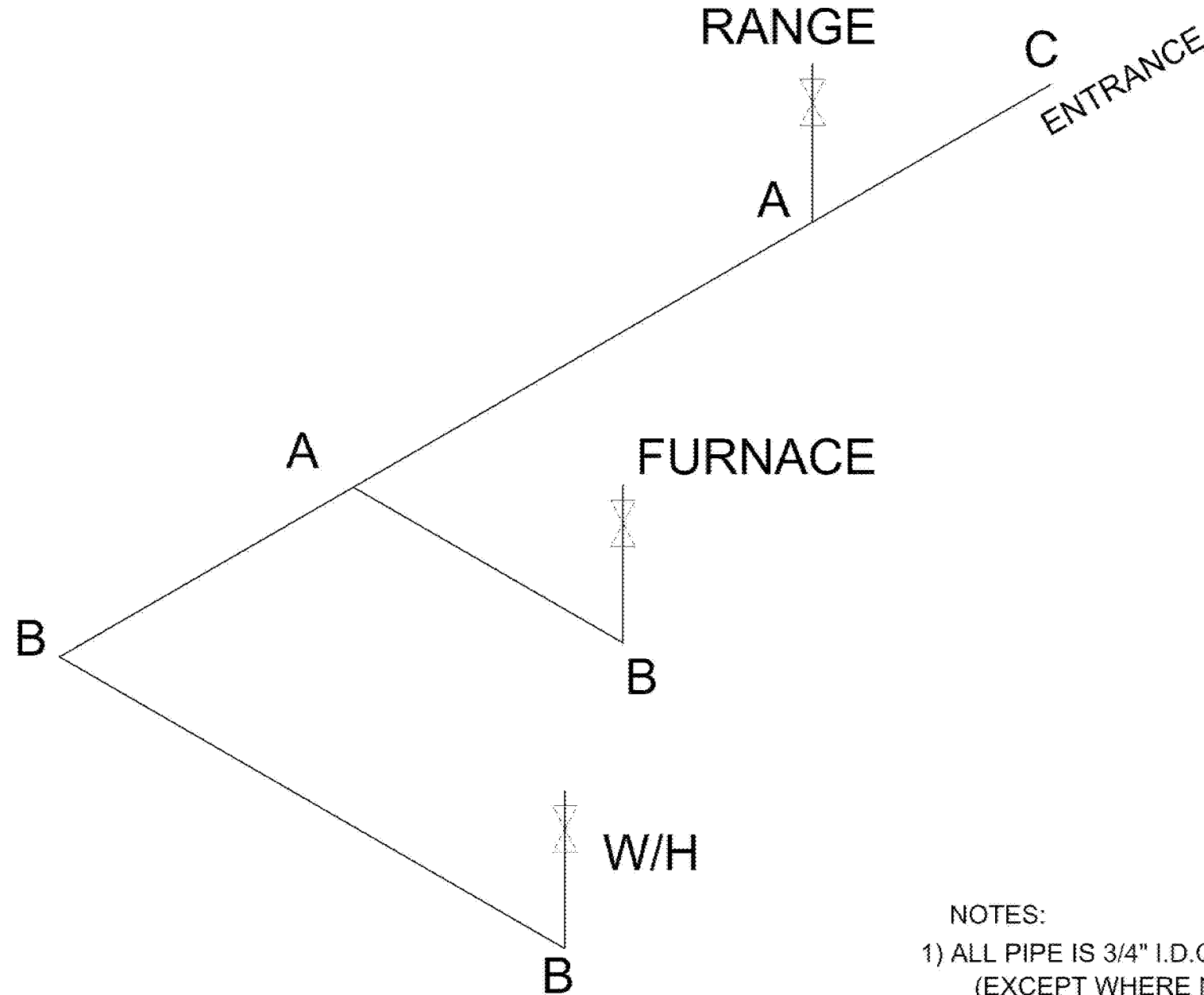
REVISED
 8/17/2022

THIRD PARTY SEAL

MODEL NAME	Morocco
MODEL NO.	CEA28684AH
BOX SIZE	28' x 68'
MODEL SQ. FT.	1,791
DATE	
REVISION	
DRAWN BY	Alex Whaley
DATE DRAWN	12/12/2019
DATE PRINTED	8/15/2022
SCALE	3/16"=1'
PLAN NO.	CE-M026-68-4
SHEET NAME	D.W.V & SUPPLY
SHEET NO.	PL-1.

File Path: C:\Users\whaley\OneDrive\Desktop\930 Dwg\Adventure\CE-M026-68-4.dwg, Last Saved By: WhaleyA, Saved Date: 8/15/2022 9:01 AM

MDL= 30'



REVISION	DATE

MODEL NAME	Morocco
MODEL NO.	CEA28684AH
BOX SIZE	28' X 68'
MODEL SQ. FT.	1,791

DRAWN BY
Alex Whaley

DATE DRAWN
12/12/2019

DATE PRINTED
3/1/2022

SCALE
3/16"=1'

PLAN NO.
CE-M026-68-4

SHEET NAME
GAS LINES

SHEET NO.
PL-5.

File Path: C:\Users\whaley\OneDrive\Desktop\9371 Dwg\gas\Adventure\CE-M026-68-4.dwg, Last Saved By: Whaley, Saved Date: 3/1/2022 12:58 PM

EPIC-CE-M026-68-4.3.1

APPROVED BY
NIA INC.
FEDERAL MANUFACTURED HOME
CONSTRUCTION AND SAFETY STANDARDS

REVISED
4/5/2022

THIRD PARTY SEAL

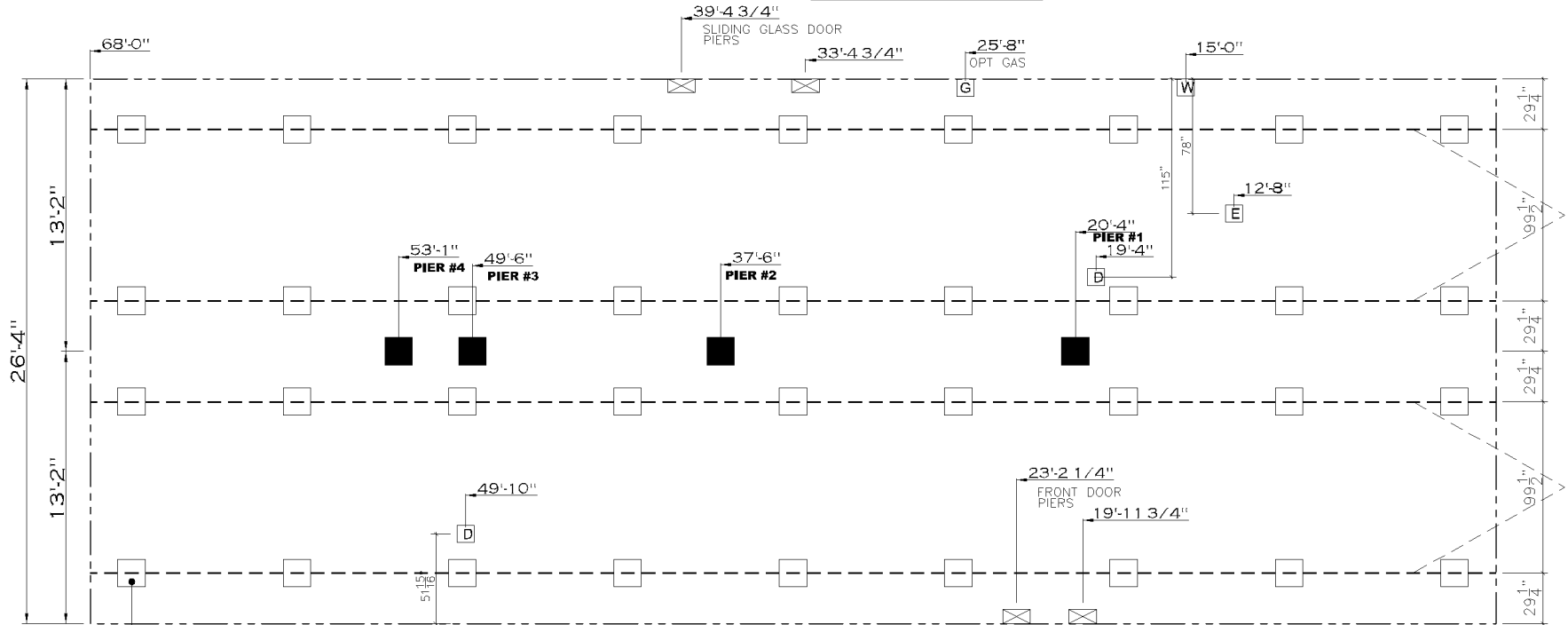
- NOTES:
- 1) ALL PIPE IS 3/4" I.D. CAST (EXCEPT WHERE NOTED OTHERWISE)
 - 2) MDL=MAX. DETERMINED LENGTH OF PIPE
 - 3) FITTING MAY BE ADDED OR SUBTRACTED TO TRAVERSE VARIATIONS IN AXLE QUANTITY, PLACEMENT, AND FRAME TYPE.
 - 4) INLET LOCATION MAY VARY TO STAY WITHIN MAX. DETERMINED LENGTH

LEGEND		APPLIANCE BTU'S RATINGS MAX. INPUT		GAS LINE SIZE CHART	
SYM	FITTINGS				
A	TEE	FURNACE	80,000 BTU'S	—	= 1"
B	90 ELL	W/H	30,000 BTU'S	—	= 3/4"
∇	VALVE	RANGE	52,000 BTU'S		
C	CAP	DRYER	N/A BTU'S		

20 psf Roof Live Load		
Column Pier #	Distance from Hitch	Pier Load (lbs)
1	20.333	3790
2	37.5	3790
3	49.5	1108
4	53.083	1108

30 psf Roof Live Load		
Column Pier #	Distance from Hitch	Pier Load (lbs)
1	20.333	5974
2	37.5	5974
3	49.5	2397
4	53.083	2397

40 psf Roof Live Load		
Column Pier #	Distance from Hitch	Pier Load (lbs)
1	20.333	7367
2	37.5	7367
3	49.5	2896
4	53.083	2896



SERVICE DROP LEGEND	
	= ELECTRICAL DROP
	= WATER INLET
	= DWV PLUMBING DROP
	= GAS INLET

TYPICAL FRAME SUPPORT PIERS

20 lb ROOF LOAD SIDEWALL OPENING PIER LOAD 28' BOX WIDTH	SIDEWALL OPENING (FT) REQUIRED PIER LOAD (LBS)					
	3	4	5	6	8	10
	1175	1330	1485	1640	1950	2260

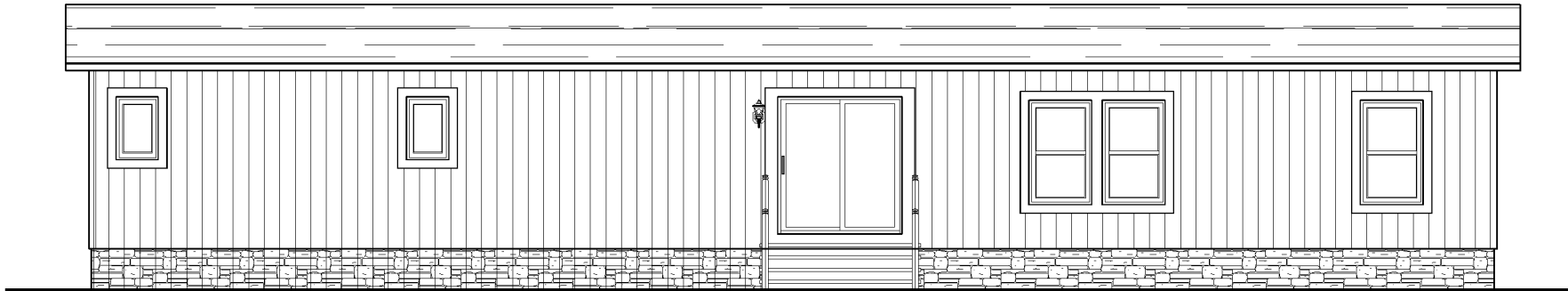
*FOR 30 lb & 40 lb ROOF LOAD REFER TO TABLES 7b & 7c IN THE INSTALLATION MANUAL.

GENERAL NOTES:

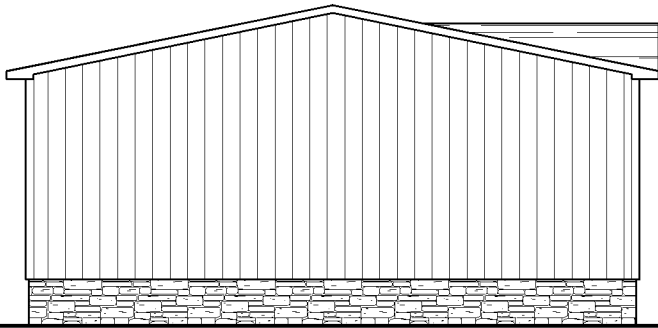
- PIER LOADS SHOWN ARE TO BE USED TO SIZE THE FOOTINGS BELOW THE MARRIAGEWALL FOR COLUMN SUPPORT PIERS. REFER TO TABLES 6b AND 6c IN THE INSTALLATION MANUAL FOR LOAD ON FRAME PIER FOOTINGS FOR HOMES THAT DO NOT REQUIRE PERIMETER BLOCKING. REFER TO TABLES 7b AND 7c IN THE INSTALLATION MANUAL FOR LOAD ON FRAME PIER FOOTINGS THAT REQUIRE PERIMETER BLOCKING. REFER TO TABLES 10 AND 10a TO DETERMINE FOOTING SIZE FOR ALL PIERS.
- REFER TO TABLE 9 FOR PIER CONFIGURATION AND MAXIMUM ALLOWABLE HEIGHTS. CROSS REFERENCE THE PIER HEIGHT WITH THE MAXIMUM ALLOWABLE FLOOR HEIGHT LISTED IN THE FRAME TIEDOWN CHARTS (TABLE 18, 19, AND 20).
- FLOOR WIDTH SHOWN IS FOR STANDARD PRODUCT ONLY. CONTACT THE MFG PLANT FOR SPECIFICATIONS OF OPTIONS ORDERED.
- SERVICE DROP LOCATIONS IDENTIFIED ARE APPROXIMATE.
- THE MAXIMUM SPACING FOR FRAME SUPPORT PIERS FOR 8" I-BEAMS IS 8 FEET, 10" & 12" I-BEAMS ARE 10 FEET.

PIER LEGEND	
	= SUPPORT UNDER MATING OPENING
	= SUPPORT AT MATING COLUMN
	= SUPPORT UNDER MATING WALL
	= PIER PORCH/RECESSED ENTRY
	= PIER MAIN BEAM
	= PIER PERIMETER
	= TIE-DOWN SUPPORT (QTY PER TBL M. SEE DETAIL D-6 IN FOUND, PKG.)

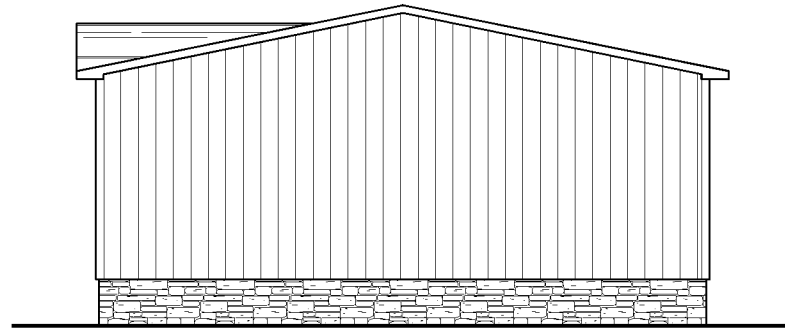
DATE	
REVISION	
MODEL NAME	Morocco
MODEL NO.	CEA28684AH
BOX SIZE	28' X 68'
MODEL SQ. FT.	1,791
DRAWN BY	Alex Whaley
DATE DRAWN	12/12/2019
DATE PRINTED	8/15/2022
SCALE	3/16"=1'
PLAN NO.	CE-M026-68-4
SHEET NAME	PIERS
	99.5
SHEET NO.	SU-1.



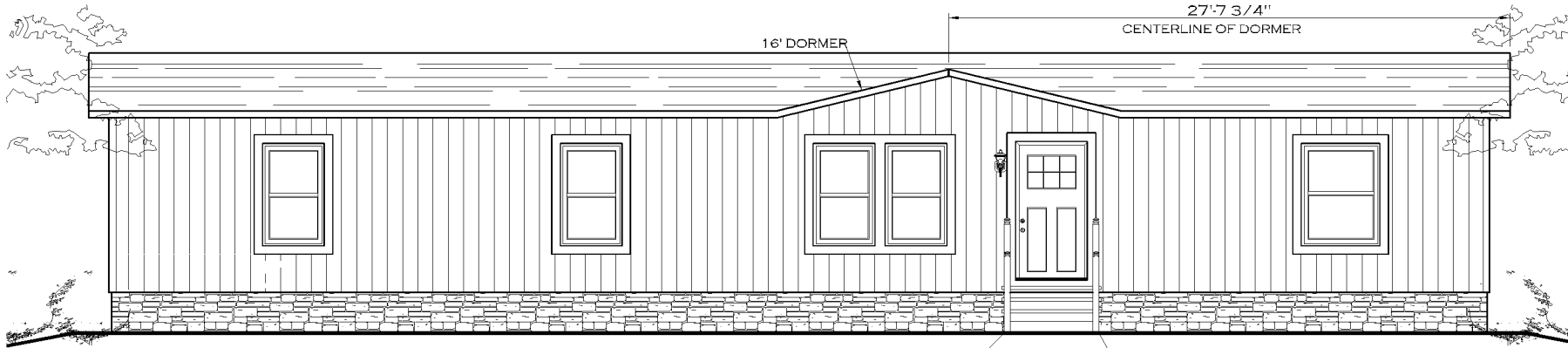
REAR ELEVATION



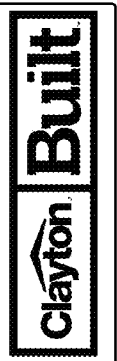
LEFT SIDE ELEVATION



HITCH END ELEVATION



SMART PANEL FRONT EXTERIOR ELEVATION TREATMENT



REVISION	DATE

MODEL NAME Motocco	MODEL SQ. FT. 1,791
MODEL NO. CEA28684AH	BOX SIZE 28' x 68'

DRAWN BY
Alex Whaley

DATE DRAWN
12/12/2019

DATE PRINTED
8/25/2022

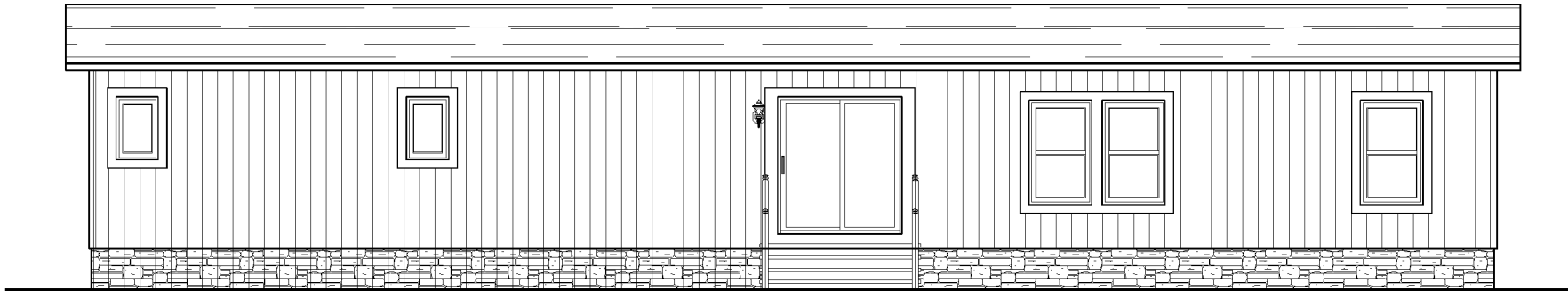
SCALE
3/16"=1'

PLAN NO.
CE-M026-68-4

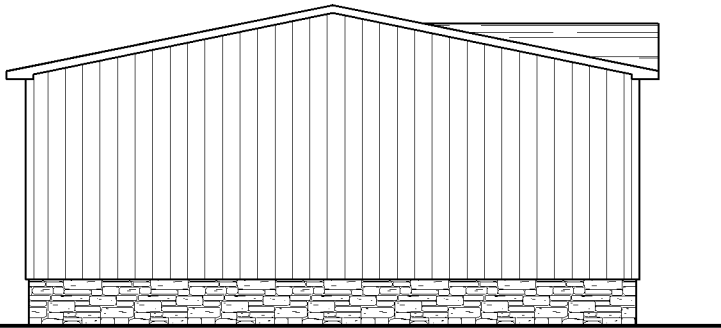
SHEET NAME
EXTERIOR

DTLS OPT 4

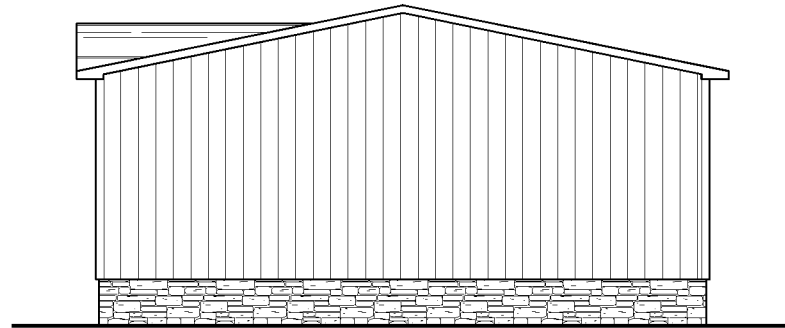
SHEET NO.
EX-1.3.



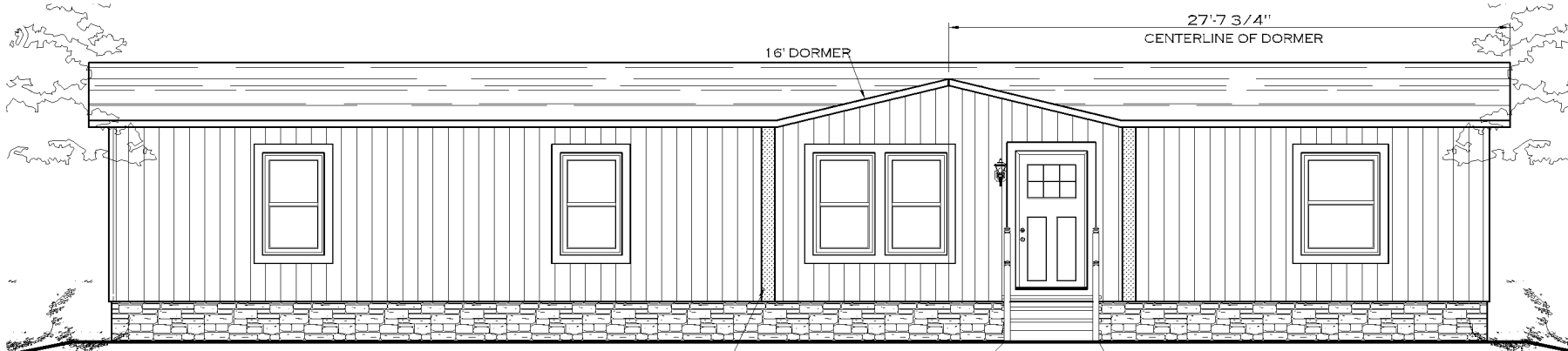
REAR ELEVATION



LEFT SIDE ELEVATION

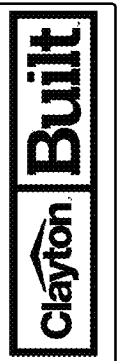


HITCH END ELEVATION



SMART PANEL COLONIAL FRONT EXTERIOR ELEVATION TREATMENT

2X6 LAID FLAT, FLASHED & CAPPED W/HARDIE



REVISION	DATE

MODEL NAME Motocco	MODEL SQ. FT. 1,791
MODEL NO. CEA28684AH	BOX SIZE 28' x 68'

DRAWN BY
Alex Whaley

DATE DRAWN
12/12/2019

DATE PRINTED
8/25/2022

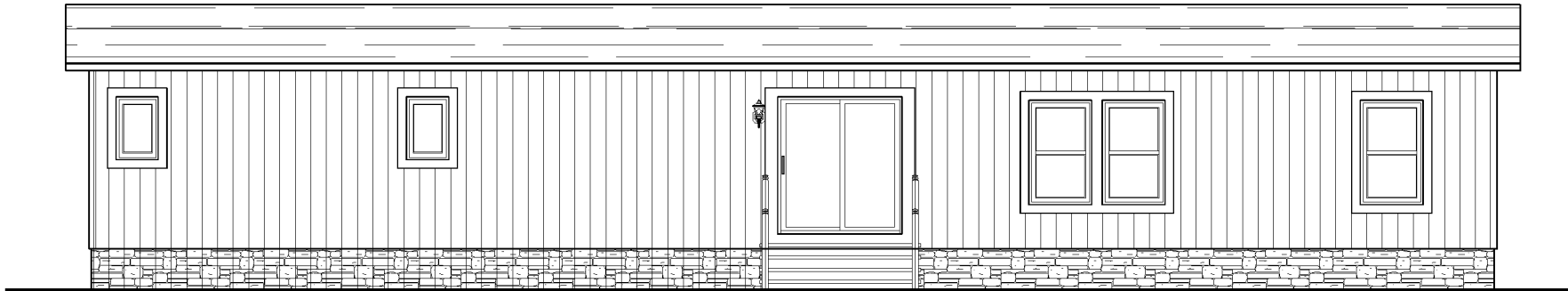
SCALE
3/16"=1'

PLAN NO.
CE-M026-68-4

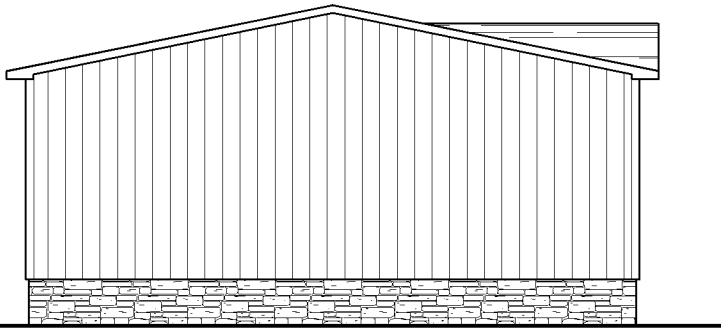
SHEET NAME
EXTERIOR

DTLS OPT 5

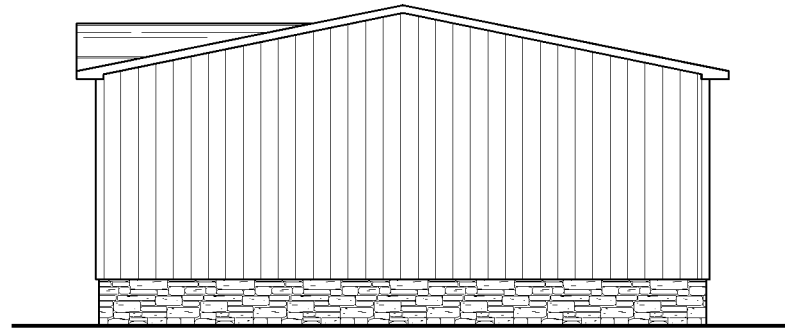
SHEET NO.
EX-1.4.



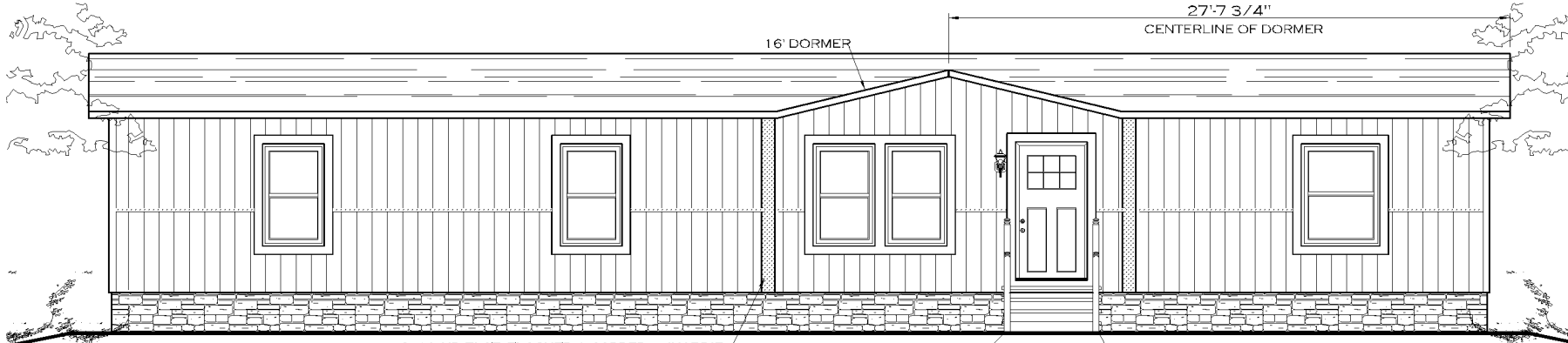
REAR ELEVATION



LEFT SIDE ELEVATION

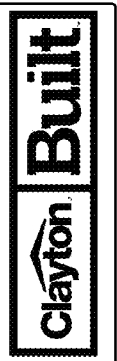


HITCH END ELEVATION



2x6 LAID FLAT, FLASHED & CAPPED w/HARDIE

SMART PANEL SOUTHERN RANCH FRONT EXTERIOR ELEVATION TREATMENT



REVISION	DATE

MODEL NAME Motocco	MODEL NO. CEA28684AH	MODEL SQ. FT. 1,791
BOX SIZE 28' x 68'		

DRAWN BY
Alex Whaley

DATE DRAWN
12/12/2019

DATE PRINTED
8/25/2022

SCALE
3/16"=1'

PLAN NO.
CE-M026-68-4

SHEET NAME
EXTERIOR

DTLS OPT **6**

SHEET NO.
EX-1.5.