

STATE OF TEXAS

Mrs. MARY'S CREEK ESTATES, owners of the property, as shown on the plat, hereby certify that the plat correctly represents a survey made under my supervision... I, DAVID C. NEVELL, do hereby certify that the plat correctly represents a survey made under my supervision...

BEFORE ME, the undersigned authority, on this day personally appeared JOHN B. SHORE, WILLIAM F. NELSON and MATTHEW G. DUCKY, known to me to be the persons whose names are subscribed to the foregoing instrument, and acknowledged to me that they executed the same for the purposes and consideration therein set forth.



STATE OF TEXAS
NOTARY PUBLIC
NELSON REESE
By Commission Expires



CITY OF FRISCO
I, JAMES E. THOMPSON, City Engineer of the City of Frisco, Texas, do hereby certify that the plat is a true and correct copy of the original plat as filed with the City Planning Commission of the City of Frisco, Texas, this day of April, 1994.

APPROVED BY CITY OF FRISCO
JAMES E. THOMPSON
CITY ENGINEER

APPROVED BY CLARA CREEK DRAINAGE DISTRICT
JAMES E. THOMPSON
DRAINAGE DISTRICT

APPROVED BY CITY OF FRISCO
JAMES E. THOMPSON
CITY ENGINEER

APPROVED BY CLARA CREEK DRAINAGE DISTRICT
JAMES E. THOMPSON
DRAINAGE DISTRICT

9443171 18/511

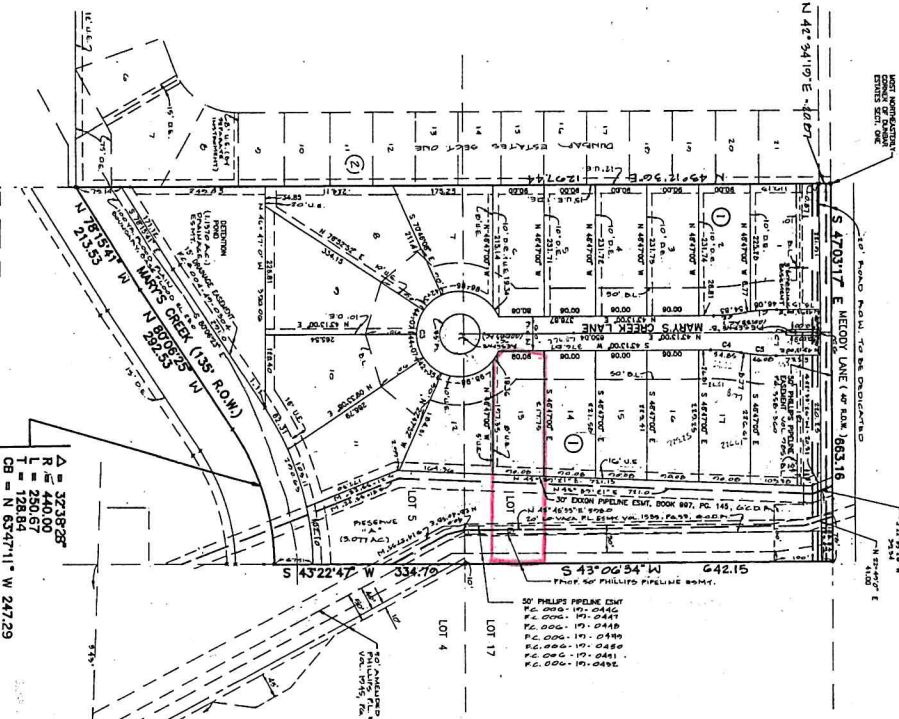


TABLE OF LOTS

LOT NO.	ACRES	APPROX. AREA	APPROX. AREA	APPROX. AREA
1	0.21	0.21	0.21	0.21
2	0.21	0.21	0.21	0.21
3	0.21	0.21	0.21	0.21
4	0.21	0.21	0.21	0.21
5	0.21	0.21	0.21	0.21
6	0.21	0.21	0.21	0.21
7	0.21	0.21	0.21	0.21
8	0.21	0.21	0.21	0.21
9	0.21	0.21	0.21	0.21
10	0.21	0.21	0.21	0.21
11	0.21	0.21	0.21	0.21
12	0.21	0.21	0.21	0.21
13	0.21	0.21	0.21	0.21
14	0.21	0.21	0.21	0.21
15	0.21	0.21	0.21	0.21
16	0.21	0.21	0.21	0.21
17	0.21	0.21	0.21	0.21
18	0.21	0.21	0.21	0.21
19	0.21	0.21	0.21	0.21
20	0.21	0.21	0.21	0.21
21	0.21	0.21	0.21	0.21
22	0.21	0.21	0.21	0.21
23	0.21	0.21	0.21	0.21
24	0.21	0.21	0.21	0.21
25	0.21	0.21	0.21	0.21
26	0.21	0.21	0.21	0.21
27	0.21	0.21	0.21	0.21
28	0.21	0.21	0.21	0.21
29	0.21	0.21	0.21	0.21
30	0.21	0.21	0.21	0.21
31	0.21	0.21	0.21	0.21
32	0.21	0.21	0.21	0.21
33	0.21	0.21	0.21	0.21
34	0.21	0.21	0.21	0.21
35	0.21	0.21	0.21	0.21
36	0.21	0.21	0.21	0.21
37	0.21	0.21	0.21	0.21
38	0.21	0.21	0.21	0.21
39	0.21	0.21	0.21	0.21
40	0.21	0.21	0.21	0.21
41	0.21	0.21	0.21	0.21
42	0.21	0.21	0.21	0.21
43	0.21	0.21	0.21	0.21
44	0.21	0.21	0.21	0.21
45	0.21	0.21	0.21	0.21
46	0.21	0.21	0.21	0.21
47	0.21	0.21	0.21	0.21
48	0.21	0.21	0.21	0.21
49	0.21	0.21	0.21	0.21
50	0.21	0.21	0.21	0.21

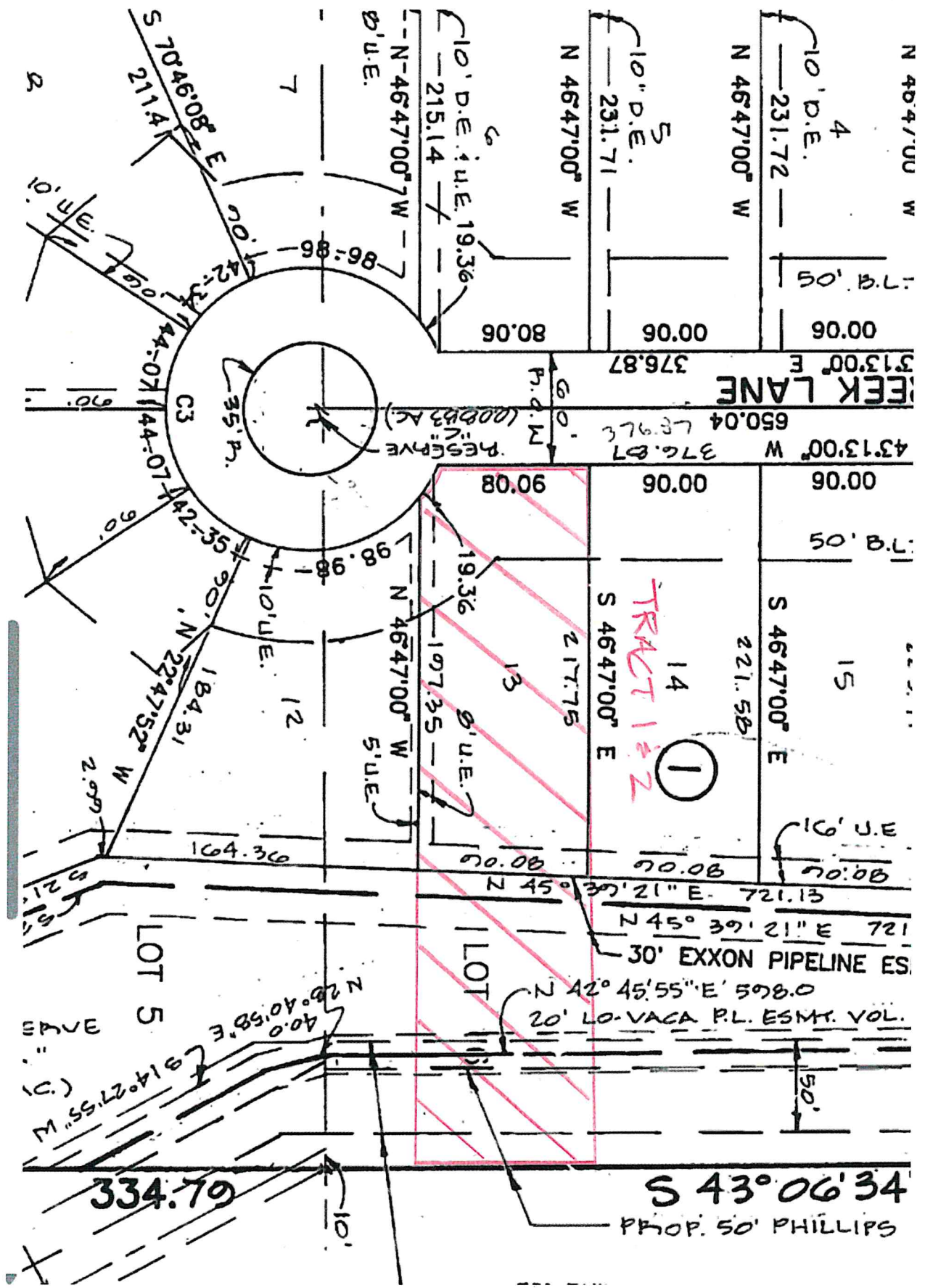


VIGNETTE MAP
SCALE 1" = 200'

- NOTES:
1. THERE IS NO VISIBLE SURFACE EVIDENCE OF PERMANENT OR TEMPORARY FLOODING IN THE AREA SHOWN ON THIS MAP.
 2. PERMANENT STRUCTURES, INCLUDING FENCES, SHALL NOT BE LOCATED IN A FLOOD HAZARD AREA.
 3. PERMANENT STRUCTURES SHALL NOT BE LOCATED WITHIN THE FLOOD HAZARD AREA.
 4. PERMANENT STRUCTURES SHALL NOT BE LOCATED WITHIN THE FLOOD HAZARD AREA.
 5. ALL DRIVEWAY ACCESS SHALL BE MAINTAINED BY THE CITY OF FRISCO.
 6. DRAINAGE DITCH SHALL BE MAINTAINED BY THE CITY OF FRISCO.
 7. STORMS ON DRAINAGE TO BE MATCH SPEED AND SHALL OBTAIN 85% GUARANTEE BEFORE FINAL ACCEPTANCE.
 8. ALL CONSTRUCTION SHALL BE COMPLETED BY THE DATE SET FORTH IN THE PERMITS.
 9. ALL CONSTRUCTION SHALL BE COMPLETED BY THE DATE SET FORTH IN THE PERMITS.
 10. ALL CONSTRUCTION SHALL BE COMPLETED BY THE DATE SET FORTH IN THE PERMITS.

FINAL PLAT
OF
MARY'S CREEK ESTATES
12 LOTS
IN THE 1ST & 2ND TRACT OF MARY'S CREEK ESTATES
IN THE 1ST & 2ND TRACT OF MARY'S CREEK ESTATES
AS SHOWN ON THE PLAT HEREIN
IN THE 1ST & 2ND TRACT OF MARY'S CREEK ESTATES
AS SHOWN ON THE PLAT HEREIN
IN THE 1ST & 2ND TRACT OF MARY'S CREEK ESTATES
AS SHOWN ON THE PLAT HEREIN

OWNER:
MARY'S CREEK ESTATES, LTD.
6624 FANNIN
SUITE 2700
HOUSTON, TEXAS 77030
PHONE: (713) 621-8362
PHONE: (713) 799-2700
ENGINEER:
MUNICIPAL ENGINEERING CO., INC.
3301 FEDERAL ROAD
PASADENA, TEXAS 77504
PHONE: (713) 941-8988



N 46°47'00" W

4

10' D.E. 231.72

N 46°47'00" W

5

10' D.E. 231.71

N 46°47'00" W

10' D.E. 19.36
215.14
N 46°47'00" W
D.U.E.

7

S 70°49'08" E 211.14

WEEK LANE

376.87

650.04

RESERVE (0.0083 AC.)

376.87

43°13'00" W

00.06

50' B.L.

15

S 46°47'00" E

221.58

1

TRACT 1 & 2

14

S 46°47'00" E

217.75

13

N 46°47'00" W

197.35

12

N 22°47'52" W

184.31

N 10' U.E.

164.36

16' U.E

70.08

N 45° 39' 21" E 721.13

N 45° 39' 21" E 721

30' EXXON PIPELINE ES.

N 42° 45' 55" E 598.0

20' LO-VACA P.L. ESMT. VOL.

50'

S 43° 06' 34"

PROP. 50' PHILLIPS

334.79

LOT 5

N 26° 40' 58" E 40.0

N 14° 27' 55" W 314.27

LOT 11