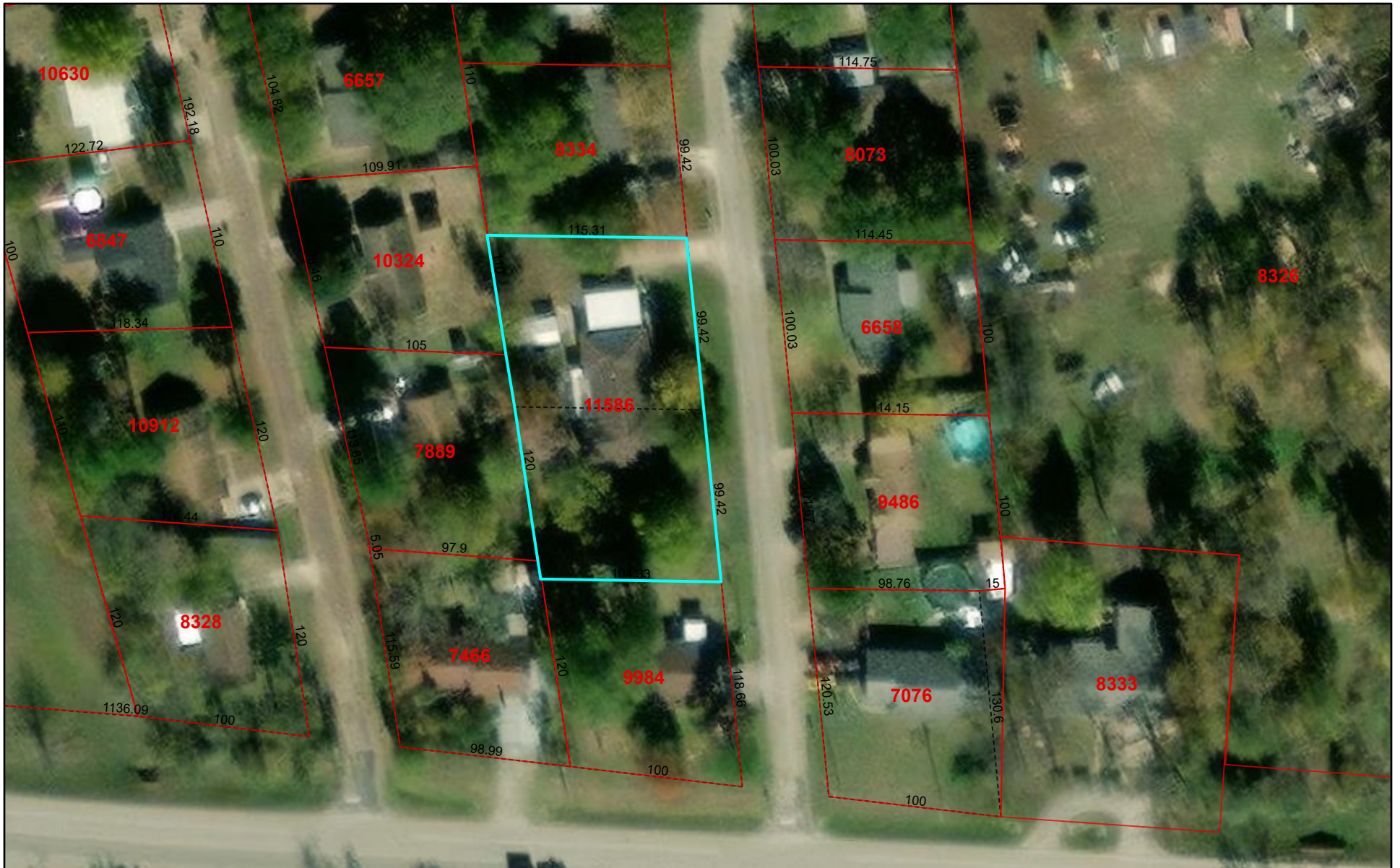
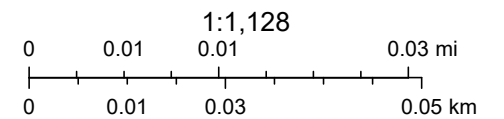


# Limestone CAD Web Map



4/18/2024, 8:55:32 AM

 Parcels  Abstracts  Lot Lines



Maxar, Microsoft

Limestone County Appraisal District, BIS Consulting - [www.bisconsulting.com](http://www.bisconsulting.com)

Disclaimer: This product is for informational purposes only and has not been prepared for or be suitable for legal, engineering, or surveying purposes. It does not represent an on-the-ground survey and represents only the approximate relative location of boundaries.