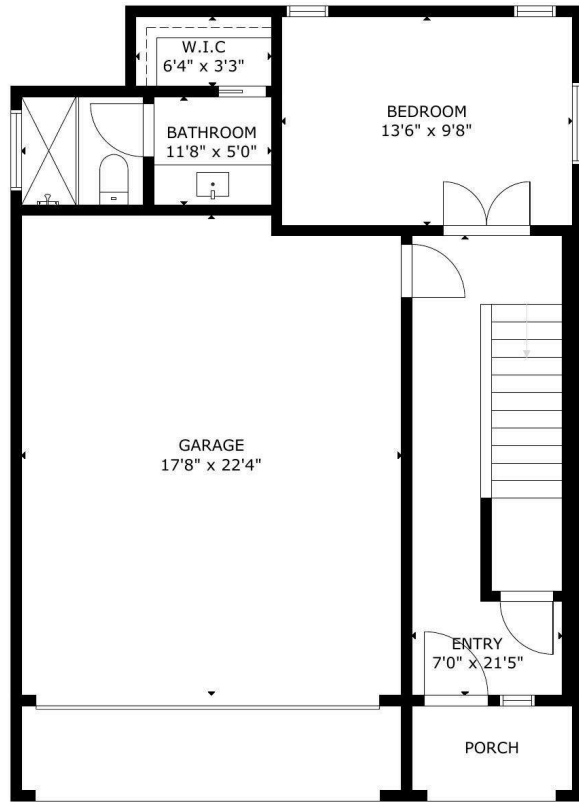
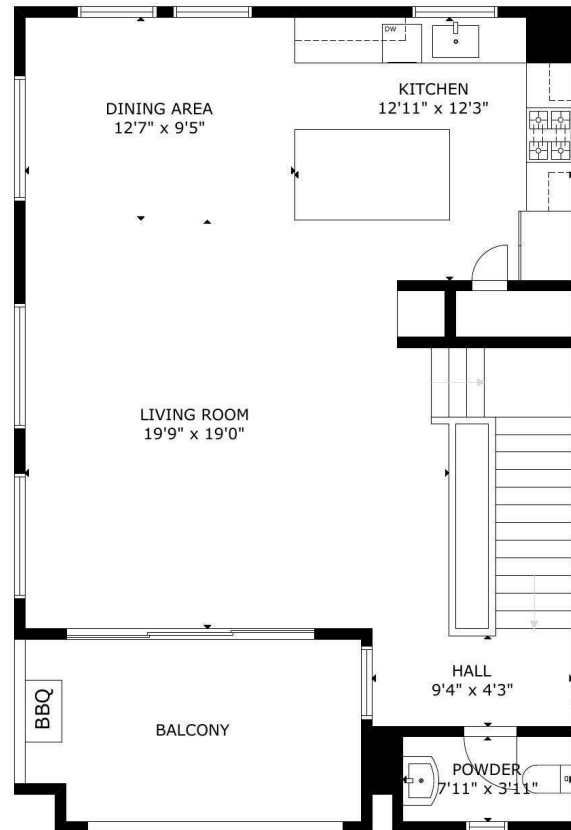


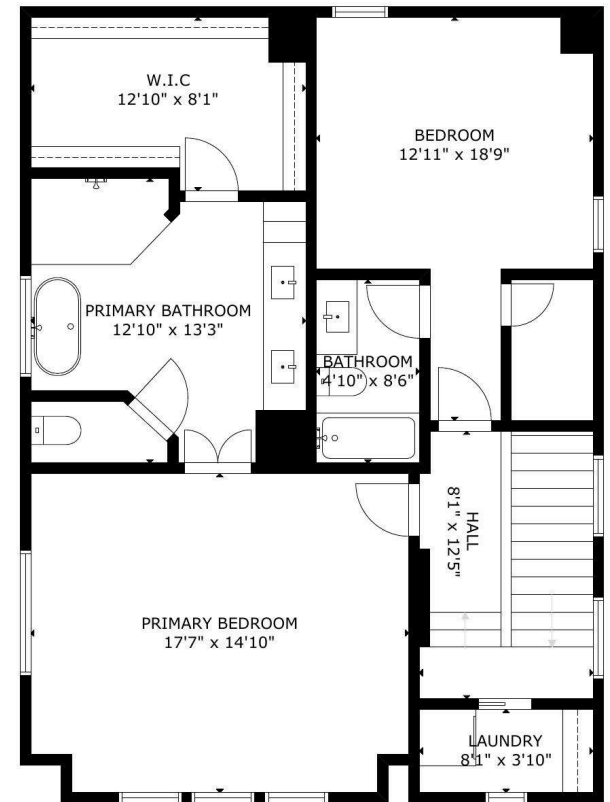
# 1417 Fowler St, Houston, TX, 77007, US



FLOOR 1



FLOOR 2



FLOOR 3

GROSS INTERNAL AREA  
TOTAL: 2,123 sq ft  
FLOOR 1: 381 sq ft, FLOOR 2: 804 sq ft, FLOOR 3: 938 sq ft  
EXCLUDED AREAS: GARAGE: 389 sq ft  
SIZE AND DIMENSIONS ARE APPROXIMATE, ACTUAL MAY VARY

