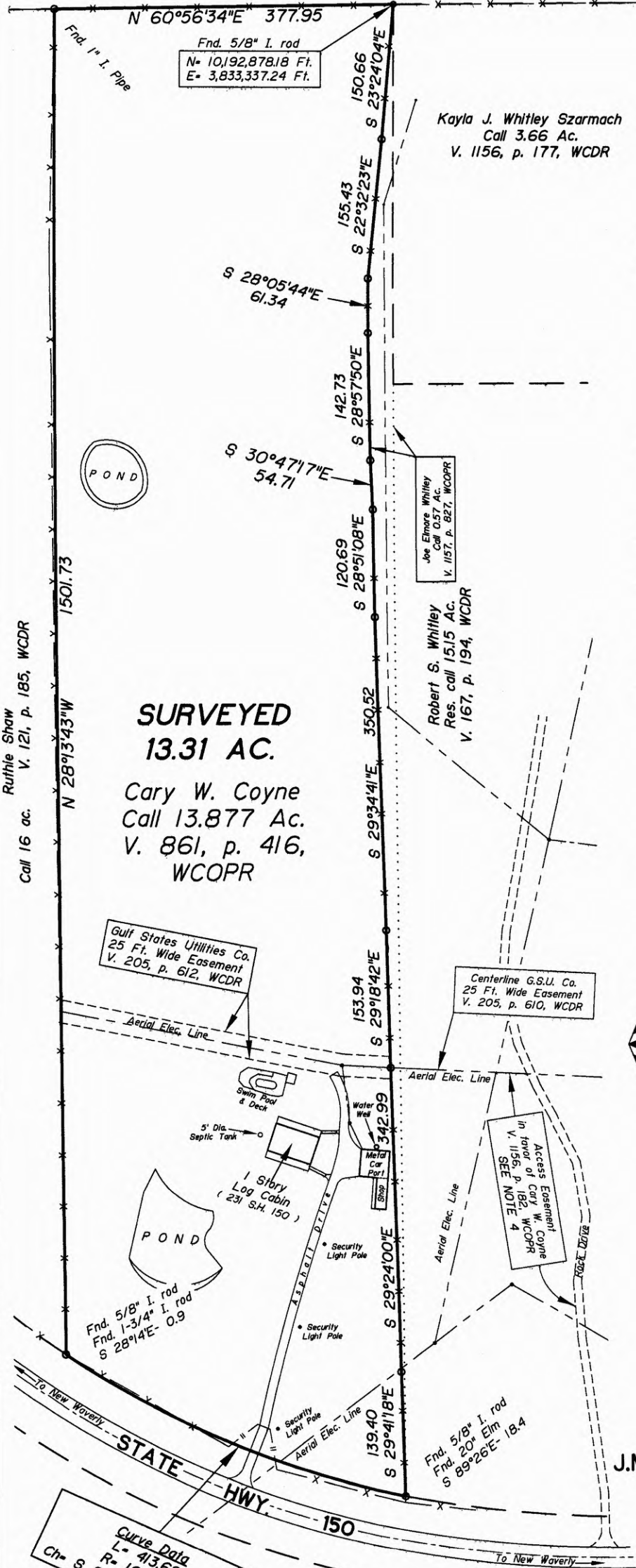


Rita Bilnoski  
Call 11.9056 ac. V. 967, p. 172, WCOPR



Kayla J. Whitley Szarmach  
Call 3.66 Ac.  
V. 1156, p. 177, WCDR

Joe Elmore Whitley  
Call 0.57 Ac.  
V. 1157, p. 827, WCOPR

Robert S. Whitley  
Res. call 15.15 Ac.  
V. 167, p. 194, WCDR

**SURVEYED  
13.31 AC.**

Cary W. Coyne  
Call 13.877 Ac.  
V. 861, p. 416,  
WCOPR

Gulf States Utilities Co.  
25 Ft. Wide Easement  
V. 205, p. 612, WCDR

Centerline G.S.U. Co.  
25 Ft. Wide Easement  
V. 205, p. 610, WCDR

Access Easement  
in favor of Cary W. Coyne  
V. 1156, p. 182, WCDR  
SEE NOTE 4

Fnd. 5/8" I. rod  
Fnd. 1-3/4" I. rod  
S 28°14'E- 0.9

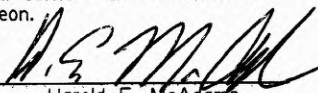
Fnd. 5/8" I. rod  
Fnd. 20' Elm  
S 89°26'E- 18.4

Curve Data  
L= 413.62  
R= 1053.07  
Ch= S 85°13'48"W- 410.96

**NOTES:**

1. Coordinates, bearings and distances shown hereon are Grid NAD 83 (1993), Texas Central Zone referenced to the City of Huntsville Mapping Control Network and are based on the position of Control Point 6028 having published coordinates of N=10,192,903.680 Ft., E= 3,820,042.041 Ft. and G.P.S. observations. Distances herein may be converted to Geodetic Horizontal (surface) by dividing by a Combined Scale Factor of 0.999988.
2. There exists a non-assignable access easement in favor of Cary W. Coyne dated January 28, 2015 and recorded in Volume 1156, page 182, Official Public Records of Walker County, Texas.
3. Corners on northeast line along fence are not monumented, points only.
4. This property is within Zone X, "areas determined to be outside the 0.2% annual chance floodplain", according to F.E.M.A. Flood Insurance Rate Map, Community-Panel No. 481042 0525D and Map No. 48471C0525D dated August 16, 2011
5. This survey was completed without an Abstract of Title. There may be easements and other matters not shown.

I, Harold E. McAdams, do hereby state that this plat represents a survey made on the ground and that all corners and monuments are as shown hereon.

Signed   
Harold E. McAdams  
Registered Professional  
Land Surveyor No. 2005  
April 26, 2017



PLAT OF  
**CARY W. COYNE  
13.31 ACRE TRACT**  
J.M. DE LA GARZA GRANT, A-22  
WALKER COUNTY, TEXAS  
APRIL 2017  
SCALE 1" = 150 FEET  
MOORE & WOODS, INC.  
Reg. Professional Land Surveyors  
P.O. Box 981, Huntsville, Texas 77342  
TBPLS Firm No. 10041900  
Phone: 936-295-3304