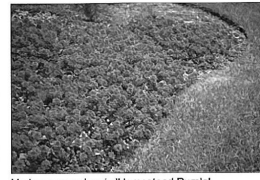


Ilex x 'Mary Nell'



Lagerstroemia indica 'Basham's Party Pink'



Verbena canadensis 'Homestead Purple'



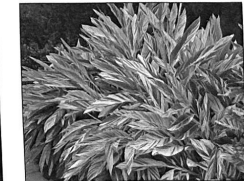
Crinum asiaticum 'Variegated Procerum'



Dietes bicolor



Azalea Encore 'Autumn Empress'



Alpinia zerumbet 'Variegata'

PLANT SCHEDULE

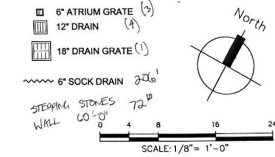
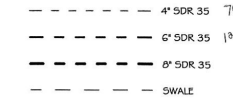
| TREES | CODE | COMMON NAME / BOTANICAL NAME   | CONT.   | QTY |
|-------|------|--|---------|-----|
|       | LB2  | PINK FLOWERING GRAPE MYRTLE / LAGERSTROEMIA INDICA 'BASHAM'S PARTY PINK' | 65 GAL  | 3   |
|       | OV   | SOUTHERN LIVE OAK / QUERCUS VIRGINIANA                                   | 200 GAL | 1   |

| SHRUBS | CODE    | COMMON NAME / BOTANICAL NAME                                    | CONT.  | QTY |
|--------|---------|---|--------|-----|
|        | AJA A45 | AUTUMN EMPRESS AZALEA / AZALEA ENCORE 'AUTUMN EMPRESS'™         | 3 GAL  | 17  |
|        | CA      | QUEEN EMMA CRINUM LILY / CRINUM ASIATICUM 'VARIEGATED PROCEBUM' | 15 GAL | 1   |
|        | ILE     | DWARF YALPON / ILEX VOMITORIA 'NANA'                            | 3 GAL  | 20  |
|        | IM      | MARY NELL HOLLY / ILEX X 'MARY NELL'                            | 65 GAL | 4   |
|        | UG RE2  | WAX LEAF LIGULSTRUM / LIGULSTRUM JAPONICUM 'RECURVIFOLIUM'      | 30 GAL | 1   |
|        | VIB     | SANDANKIA VIBURNUM / VIBURNUM SUSPENSUM                         | 3 GAL  | 5   |

| SPRINKLER AREAS | CODE    | COMMON NAME / BOTANICAL NAME                                     | CONT. | SPACING  | QTY |
|-----------------|---------|--|-------|----------|-----|
|                 | AJP     | VAREGATED SHELL GINGER / ALPINIA ZERUMBET 'VAREGATA'             | 3 GAL | 10' o.c. | 32  |
|                 | AMO COM | DWARF CARDAMOM GINGER / ANOMIUM COMPACTUM                        | 3 GAL |          | 60  |
|                 | DB      | FORTNIGHT LILY / DIETES BICOLOR                                  | 1 GAL | 24" o.c. | 192 |
|                 | FC      | SAND-LEAF FIG IVY / FIGULS SP.                                   | 1 GAL | 10' o.c. | 64  |
|                 | RD      | DWARF ROSEMARY / ROSMARINUS OFFICINALIS 'PROSTRATUS'             | 3 GAL | 24" o.c. | 5   |
|                 | VGP     | HOMESTEAD PURPLE VERBENA / VERBENA CANADENSIS 'HOMESTEAD PURPLE' | 1 GAL | 10' o.c. | 36  |

| GROUND COVERS | CODE | COMMON NAME / BOTANICAL NAME      | CONT. | SPACING | QTY      |
|---------------|------|-----------------------------------|-------|---------|----------|
|               | BG   | BULL GRAVEL / BULL GRAVEL         | ROCK  |         | 780 SF   |
|               | PINE | PINE STRAW MULCH                  | MULCH |         | 2,359 SF |
|               | ZJ   | ZOYIA GRASS / ZOYIA X 'PALMSEDES' | SOD   |         | 6,254 SF |

LANDSCAPE DRAINAGE PIPE LEGEND



P.O. Box 431264  
The Woodlands, Texas 77393  
office: 281.259.2610  
fax: 281.259.2622  
www.alliandesign.com

- site design and planning
- full service landscape construction
- construction management and budgeting

© 2014 E.L.I. Land design, LLC. All rights reserved. No parts of this document may be reproduced or used in any form without prior authorization from E.L.I. Land design, LLC.

project location:  
Robinson Residence  
10 S. Gary Glen Circle  
The Woodlands, TX 77382

client information:  
Robinson Residence  
10 S. Gary Glen Circle  
The Woodlands, TX 77382

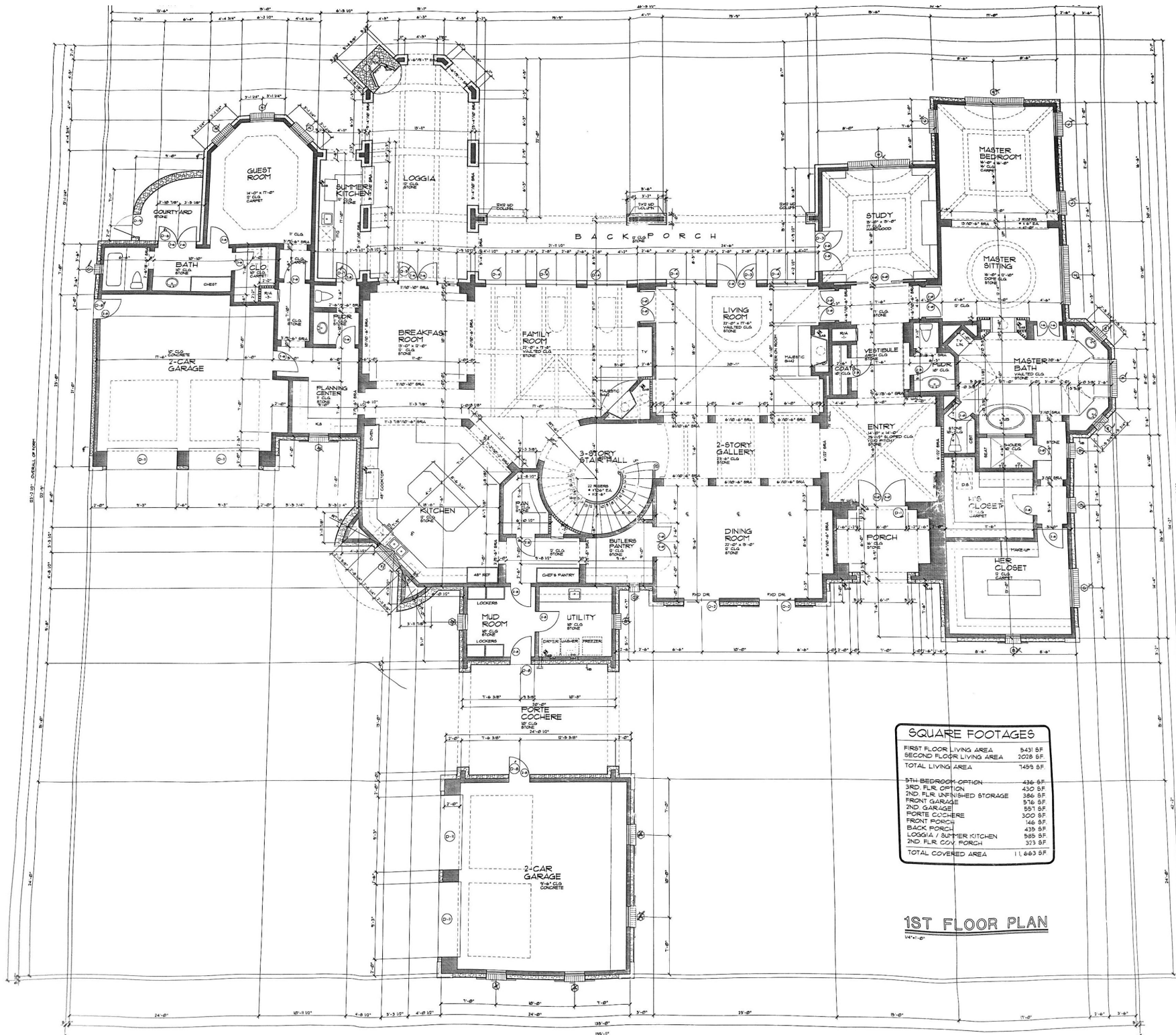
DATE: 08/14/14  
DESIGNER: REG HUNTER  
DATE: 03/17/2014  
DRAWN BY: M.L. HUNTER  
CHECKED BY: E.L.I. LAND DESIGN

REVISIONS:

|  |  |
|--|--|
|  |  |
|  |  |
|  |  |
|  |  |

original scale: 1" = 10'-0"  
original size: 36" X 24"  
sheet: L1.0





**SQUARE FOOTAGES**

|                            |           |
|----------------------------|-----------|
| FIRST FLOOR LIVING AREA    | 5431 SF   |
| SECOND FLOOR LIVING AREA   | 2028 SF   |
| TOTAL LIVING AREA          | 7459 SF   |
| 3RD FLOOR OPTION           | 436 SF    |
| 2ND FLR UNFINISHED STORAGE | 386 SF    |
| FRONT GARAGE               | 576 SF    |
| 2ND GARAGE                 | 591 SF    |
| PORTE COCHERE              | 300 SF    |
| FRONT PORCH                | 146 SF    |
| BACK PORCH                 | 439 SF    |
| LOGGIA / SUMMER KITCHEN    | 585 SF    |
| 2ND FLR COV. PORCH         | 313 SF    |
| TOTAL COVERED AREA         | 11,663 SF |

**1ST FLOOR PLAN**

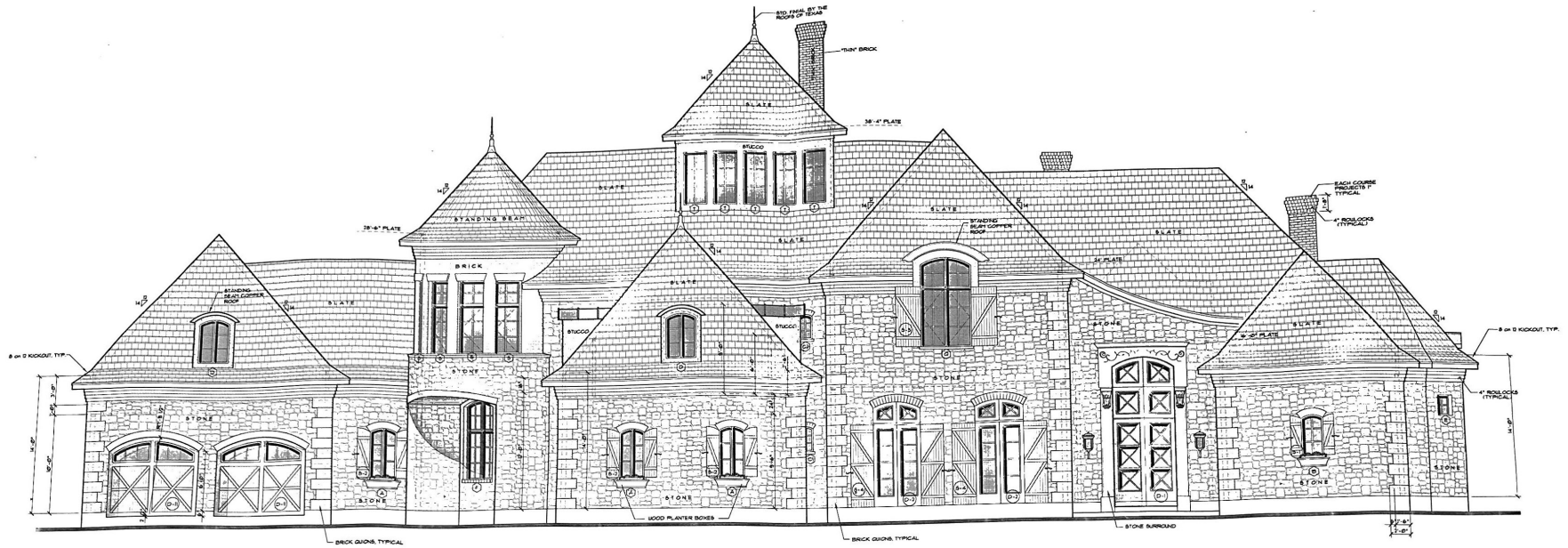
**LEGEND :**

|  |              |    |
|--|--------------|----|
|  | 2x6 WALL     | 11 |
|  | DBL 2x4 WALL | 11 |
|  | BRICK WALL   | 11 |
|  | STONE WALL   | 11 |

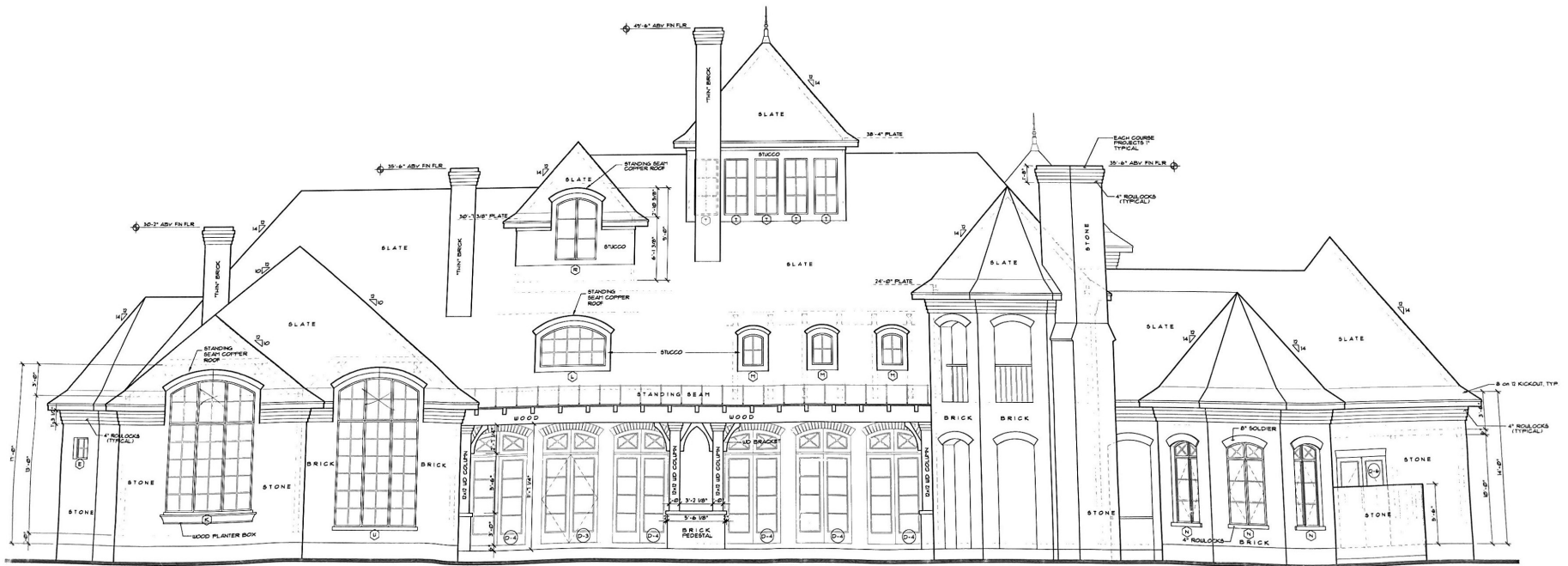
DE  
by R  
7322  
Hous  
713  
Rev1







**FRONT ELEVATION**

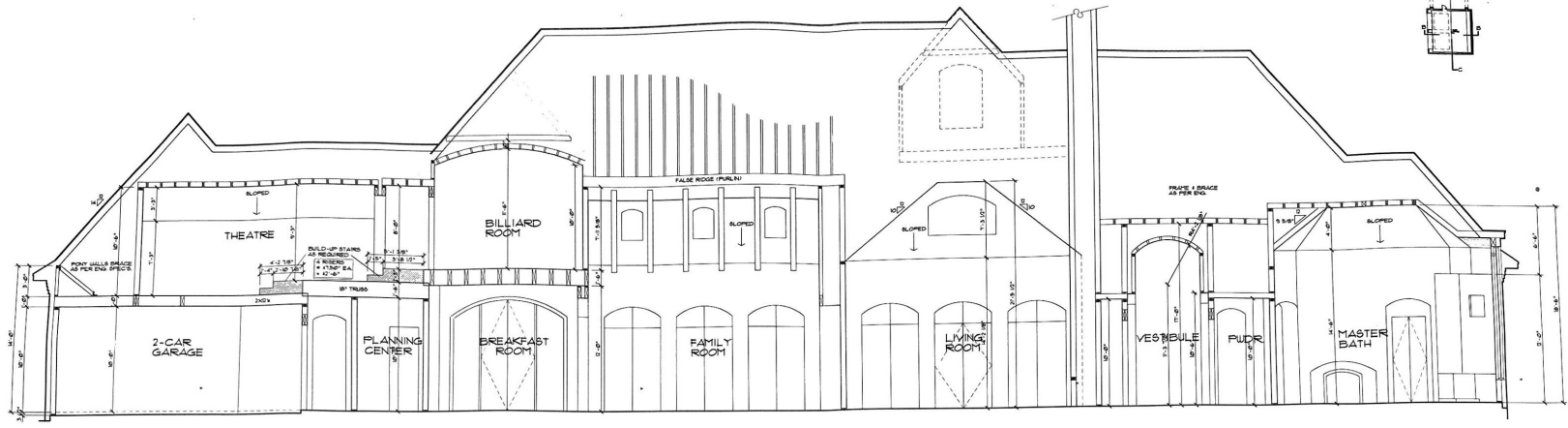
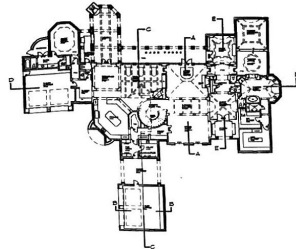


**REAR ELEVATION**

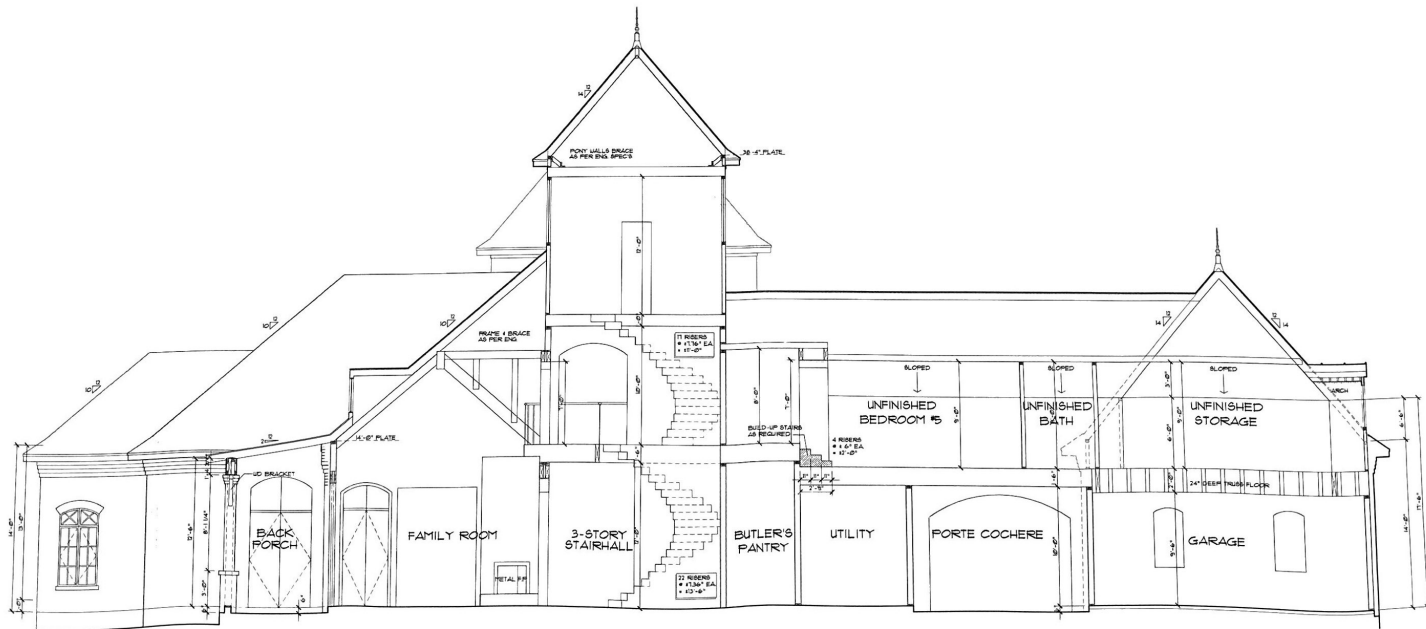
NOTE:  
 BRICK GABLES TO PROJECT  
 1" BEYOND FACE OF STONE  
 ALL BRICK SOLDIERS & MULLOCKS  
 TO PROJECT 1" BEYOND SIDE FACE  
 ALL OPENINGS ARE FROM FINISH FLOOR  
 UNLESS NOTED OTHERWISE  
 USE DEL. DOT PLATE TYPICAL







**SECTION "D-D"**



**SECTION "C-C"**

This drawing is a reproduction of the original drawing. It is not to be used for construction purposes without the written consent of the architect. The architect is not responsible for any errors or omissions in this drawing. The architect is not responsible for any errors or omissions in this drawing. The architect is not responsible for any errors or omissions in this drawing.

U S A

7

**WINDOW SCHEDULE** CUSTOM MAHOAGNY WOOD WINDOW

| MARK | SIZE/DESCRIPTION   | HDR. HT.          | QTY. | REMARKS |
|------|--|-------------------|------|---------|
| ①    | 7'-7 1/2" x 4'-0" 3LT ARCH TOP                                 | 8'-2"             | 5    |         |
| ②    | 7'-0" x 4'-0" 4LT ARCH TOP                                     | 8'-2"             | 4    |         |
| ③    | 7'-0" x 4'-0" 4LT ARCH TOP                                     | 8'-2" / 6'-0" (2) | 2    |         |
| ④    | 7'-0" x 4'-0" 4LT ARCH TOP                                     | 8'-0"             | 5    |         |
| ⑤    | 7'-0" x 4'-0" 4LT B&G  | 10'-0"            | ①    |         |
| ⑥    | 8'-0" x 4'-0" 4LT ARCH TOP OVER 1/2" HORN OVER                 | 10'-0"            | 1    |         |
| ⑦    | 12'-0" x 4'-0" 4LT ARCH TOP OVER 1/2" HORN OVER                | 10'-0"            | 1    |         |
| ⑧    | 8'-0" x 4'-0" 4LT ARCH TOP OVER 1/2" HORN OVER 1/2" HORN OVER  | 10'-0"            | 1    |         |
| ⑨    | 12'-0" x 4'-0" 4LT ARCH TOP OVER 1/2" HORN OVER 1/2" HORN OVER | 10'-0"            | 1    |         |
| ⑩    | 8'-0" x 4'-0" 4LT ARCH TOP OVER 1/2" HORN OVER 1/2" HORN OVER  | 10'-0"            | 1    |         |
| ⑪    | 8'-0" x 4'-0" 4LT ARCH TOP OVER 1/2" HORN OVER 1/2" HORN OVER  | 10'-0"            | 1    |         |
| ⑫    | 8'-0" x 4'-0" 4LT ARCH TOP OVER 1/2" HORN OVER 1/2" HORN OVER  | 10'-0"            | 1    |         |
| ⑬    | 8'-0" x 4'-0" 4LT ARCH TOP OVER 1/2" HORN OVER 1/2" HORN OVER  | 10'-0"            | 1    |         |
| ⑭    | 8'-0" x 4'-0" 4LT ARCH TOP OVER 1/2" HORN OVER 1/2" HORN OVER  | 10'-0"            | 1    |         |
| ⑮    | 8'-0" x 4'-0" 4LT ARCH TOP OVER 1/2" HORN OVER 1/2" HORN OVER  | 10'-0"            | 1    |         |
| ⑯    | 8'-0" x 4'-0" 4LT ARCH TOP OVER 1/2" HORN OVER 1/2" HORN OVER  | 10'-0"            | 1    |         |
| ⑰    | 8'-0" x 4'-0" 4LT ARCH TOP OVER 1/2" HORN OVER 1/2" HORN OVER  | 10'-0"            | 1    |         |
| ⑱    | 8'-0" x 4'-0" 4LT ARCH TOP OVER 1/2" HORN OVER 1/2" HORN OVER  | 10'-0"            | 1    |         |
| ⑲    | 8'-0" x 4'-0" 4LT ARCH TOP OVER 1/2" HORN OVER 1/2" HORN OVER  | 10'-0"            | 1    |         |
| ⑳    | 8'-0" x 4'-0" 4LT ARCH TOP OVER 1/2" HORN OVER 1/2" HORN OVER  | 10'-0"            | 1    |         |
| ㉑    | 8'-0" x 4'-0" 4LT ARCH TOP OVER 1/2" HORN OVER 1/2" HORN OVER  | 10'-0"            | 1    |         |
| ㉒    | 8'-0" x 4'-0" 4LT ARCH TOP OVER 1/2" HORN OVER 1/2" HORN OVER  | 10'-0"            | 1    |         |
| ㉓    | 8'-0" x 4'-0" 4LT ARCH TOP OVER 1/2" HORN OVER 1/2" HORN OVER  | 10'-0"            | 1    |         |
| ㉔    | 8'-0" x 4'-0" 4LT ARCH TOP OVER 1/2" HORN OVER 1/2" HORN OVER  | 10'-0"            | 1    |         |
| ㉕    | 8'-0" x 4'-0" 4LT ARCH TOP OVER 1/2" HORN OVER 1/2" HORN OVER  | 10'-0"            | 1    |         |
| ㉖    | 8'-0" x 4'-0" 4LT ARCH TOP OVER 1/2" HORN OVER 1/2" HORN OVER  | 10'-0"            | 1    |         |
| ㉗    | 8'-0" x 4'-0" 4LT ARCH TOP OVER 1/2" HORN OVER 1/2" HORN OVER  | 10'-0"            | 1    |         |
| ㉘    | 8'-0" x 4'-0" 4LT ARCH TOP OVER 1/2" HORN OVER 1/2" HORN OVER  | 10'-0"            | 1    |         |
| ㉙    | 8'-0" x 4'-0" 4LT ARCH TOP OVER 1/2" HORN OVER 1/2" HORN OVER  | 10'-0"            | 1    |         |
| ㉚    | 8'-0" x 4'-0" 4LT ARCH TOP OVER 1/2" HORN OVER 1/2" HORN OVER  | 10'-0"            | 1    |         |
| ㉛    | 8'-0" x 4'-0" 4LT ARCH TOP OVER 1/2" HORN OVER 1/2" HORN OVER  | 10'-0"            | 1    |         |
| ㉜    | 8'-0" x 4'-0" 4LT ARCH TOP OVER 1/2" HORN OVER 1/2" HORN OVER  | 10'-0"            | 1    |         |
| ㉝    | 8'-0" x 4'-0" 4LT ARCH TOP OVER 1/2" HORN OVER 1/2" HORN OVER  | 10'-0"            | 1    |         |
| ㉞    | 8'-0" x 4'-0" 4LT ARCH TOP OVER 1/2" HORN OVER 1/2" HORN OVER  | 10'-0"            | 1    |         |
| ㉟    | 8'-0" x 4'-0" 4LT ARCH TOP OVER 1/2" HORN OVER 1/2" HORN OVER  | 10'-0"            | 1    |         |
| ㊱    | 8'-0" x 4'-0" 4LT ARCH TOP OVER 1/2" HORN OVER 1/2" HORN OVER  | 10'-0"            | 1    |         |
| ㊲    | 8'-0" x 4'-0" 4LT ARCH TOP OVER 1/2" HORN OVER 1/2" HORN OVER  | 10'-0"            | 1    |         |
| ㊳    | 8'-0" x 4'-0" 4LT ARCH TOP OVER 1/2" HORN OVER 1/2" HORN OVER  | 10'-0"            | 1    |         |
| ㊴    | 8'-0" x 4'-0" 4LT ARCH TOP OVER 1/2" HORN OVER 1/2" HORN OVER  | 10'-0"            | 1    |         |
| ㊵    | 8'-0" x 4'-0" 4LT ARCH TOP OVER 1/2" HORN OVER 1/2" HORN OVER  | 10'-0"            | 1    |         |
| ㊶    | 8'-0" x 4'-0" 4LT ARCH TOP OVER 1/2" HORN OVER 1/2" HORN OVER  | 10'-0"            | 1    |         |
| ㊷    | 8'-0" x 4'-0" 4LT ARCH TOP OVER 1/2" HORN OVER 1/2" HORN OVER  | 10'-0"            | 1    |         |
| ㊸    | 8'-0" x 4'-0" 4LT ARCH TOP OVER 1/2" HORN OVER 1/2" HORN OVER  | 10'-0"            | 1    |         |
| ㊹    | 8'-0" x 4'-0" 4LT ARCH TOP OVER 1/2" HORN OVER 1/2" HORN OVER  | 10'-0"            | 1    |         |
| ㊺    | 8'-0" x 4'-0" 4LT ARCH TOP OVER 1/2" HORN OVER 1/2" HORN OVER  | 10'-0"            | 1    |         |
| ㊻    | 8'-0" x 4'-0" 4LT ARCH TOP OVER 1/2" HORN OVER 1/2" HORN OVER  | 10'-0"            | 1    |         |
| ㊼    | 8'-0" x 4'-0" 4LT ARCH TOP OVER 1/2" HORN OVER 1/2" HORN OVER  | 10'-0"            | 1    |         |
| ㊽    | 8'-0" x 4'-0" 4LT ARCH TOP OVER 1/2" HORN OVER 1/2" HORN OVER  | 10'-0"            | 1    |         |
| ㊾    | 8'-0" x 4'-0" 4LT ARCH TOP OVER 1/2" HORN OVER 1/2" HORN OVER  | 10'-0"            | 1    |         |
| ㊿    | 8'-0" x 4'-0" 4LT ARCH TOP OVER 1/2" HORN OVER 1/2" HORN OVER  | 10'-0"            | 1    |         |

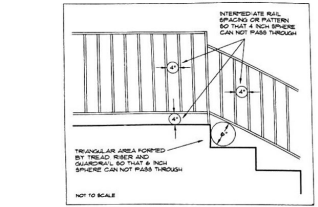
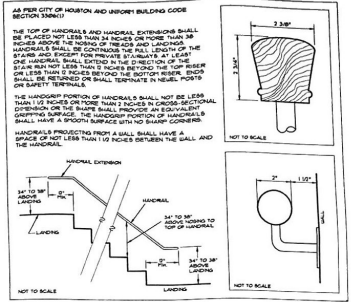
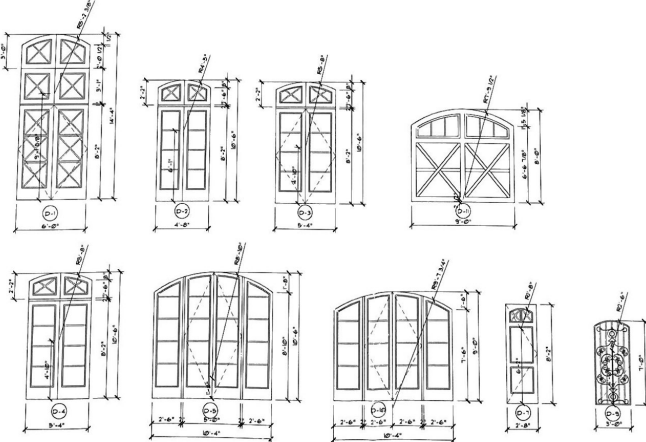
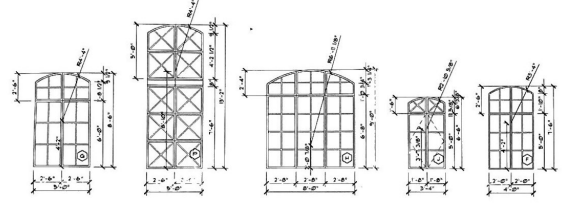
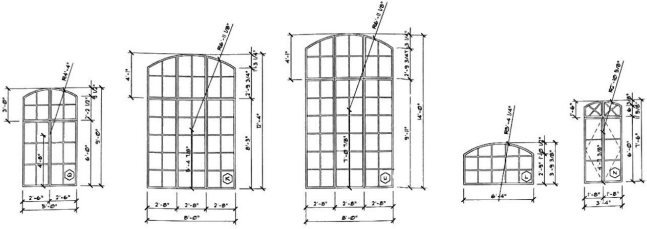
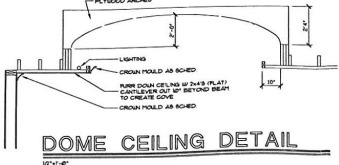
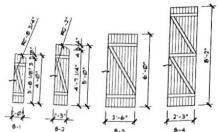
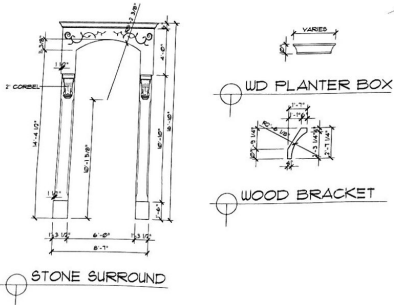
**DOOR SCHEDULE**

| MARK | QUANTITY | DESCRIPTION  | HDR. H.T. | REMARKS   |
|------|----------|--|-----------|-----------|
| ①    | 1        | (1) 3'-0" x 7'-0" 4LT ARCH TRANSOM OVER 1/2" HORN OVER | 14'-6"    |           |
| ②    | 2        | (1) 3'-0" x 7'-0" 4LT ARCH TRANSOM OVER 1/2" HORN OVER | 10'-0"    |           |
| ③    | 2        | (1) 3'-0" x 7'-0" 4LT ARCH TRANSOM OVER 1/2" HORN OVER | 10'-0"    |           |
| ④    | 5        | (1) 3'-0" x 7'-0" 4LT ARCH TRANSOM OVER 1/2" HORN OVER | 10'-0"    |           |
| ⑤    | 1        | (1) 3'-0" x 7'-0" 4LT ARCH TRANSOM OVER 1/2" HORN OVER | 10'-0"    |           |
| ⑥    | 1        | (1) 3'-0" x 7'-0" 4LT ARCH TRANSOM OVER 1/2" HORN OVER | 10'-0"    |           |
| ⑦    | 1        | (1) 3'-0" x 7'-0" 4LT ARCH TRANSOM OVER 1/2" HORN OVER | 10'-0"    |           |
| ⑧    | 3        | 2'-0" x 7'-0" 4LT ARCH TOP OVER 1/2" HORN OVER         | 8'-4"     |           |
| ⑨    | 1        | 3'-0" x 7'-0" DECORATIVE IRON COVER                    | 10'-0"    |           |
| ⑩    | 1        | (1) 3'-0" x 7'-0" 4LT ARCH TOP OVER 1/2" HORN OVER     | 8'-2"     |           |
| ⑪    | 4        | 8'-0" x 4'-0" 4LT ARCH TOP OVER 1/2" HORN OVER         | 8'-2"     | SEE ELEV. |

**NOTE**

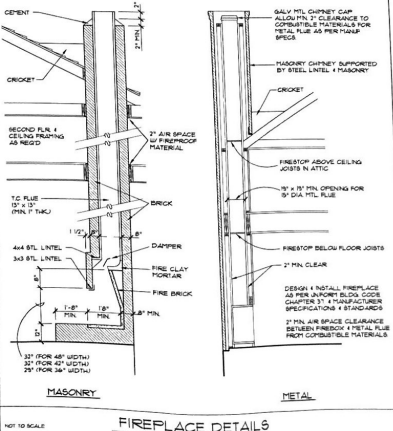
BLIND OVER TO REVEAL UNDER 1 DOOR SCHEDULE 1/2" MANUFACTURER TO NAME REE SEE REE GARY ENGINEER'S REQUIREMENTS PRIOR TO ORDERING BRICKS

ALL WINDOW PARTS TO BE THE MAHOAGNY SMOOTH GRAIN WITH DECORATIVE MOLDINGS



**FIREPLACE NOTES**

1. ALL BRICK OR FIRE BRICK FIREPLACES TO BE BUILT AND INSTALLED PER IRC 1 AND BE ALL AND (SEE) APPROVED. A COPY OF THE MANUFACTURER INSTALLATION MANUAL SHALL BE AVAILABLE ON SITE FOR INSPECTOR REVIEW.
2. CHIMNEYS TO BE 2'-0\"/>



**FIREPLACE DETAILS**

NOT TO SCALE

These drawings are to be reproduced by the contractor for use on the project. The contractor shall be responsible for obtaining all necessary permits and for any violations of code regulations. The contractor shall be responsible for any damage to the drawings or for any loss of drawings. The contractor shall be responsible for any delay in the project caused by any failure to obtain permits or to comply with code regulations. The contractor shall be responsible for any cost of any delay in the project caused by any failure to obtain permits or to comply with code regulations. The contractor shall be responsible for any cost of any delay in the project caused by any failure to obtain permits or to comply with code regulations.