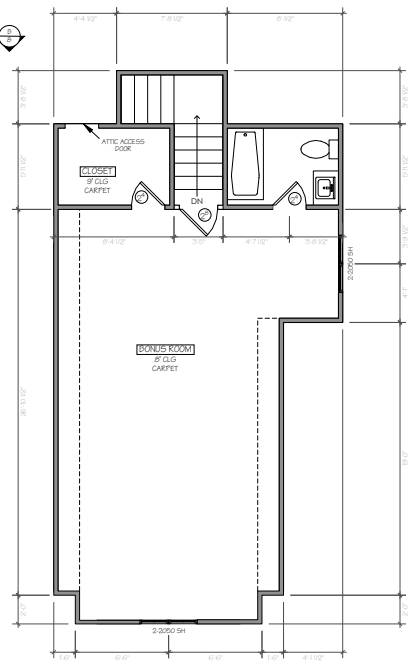


CEILING JOIST SPANS

CEILING JOIST SPANS FOR SOUTHERN PINE SPECIES
 (UNGRADED & KILN DRIED WITH NO STRESS, 1200# - 2000# L.F. 2x10)
 DEAD LOAD = 10psf
 THE MAXIMUM SPACING OR SPANS TO BE USED REFER TO THE INTERNATIONAL RESIDENTIAL CODE (IRC) TABLES

SIZE	SPACING (INCHES)	SPANS (MAXIMUM RAFTER SPANS BETWEEN BRACING) (FEET)
2 X 6	12.0	9 - 0
	16.0	8 - 0
	19.2	7 - 4
2 X 8	24.0	9 - 7
	32.0	13 - 11
	35.0	12 - 0
2 X 10	32.0	11 - 0
	40.0	9 - 10
	48.0	17 - 7
2 X 12	48.0	15 - 11
	56.0	15 - 0
	64.0	13 - 11
	72.0	12 - 6
	80.0	20 - 11

NOTES:
 Size above tables are based on the IRC 2015 TABLE R202.4(2)



FLOOR PLAN SCALE: 1/4" = 1'-0"

Date:	Revision:

I&H DESIGN CO
 2025 Highway 304
 Smithville, Texas 78957
 512-798-3355

Gonzales Residence
 Brown Road
 McDade, Texas 78650

Plan Number:
03-02

© 2019 I&H Design
 All Rights Reserved

The arrangements depicted herein are the sole property of I&H Design, and may not be reproduced in any form without written permission.

AREA'S

Living:	2692 Sq. Ft.
Garage:	830 Sq. Ft.
Front Porch:	414 Sq. Ft.
Back Porch:	414 Sq. Ft.
Brick Ledge:	89 Sq. Ft.
Bonus Room:	697 Sq. Ft.
Total Glab:	4439 Sq. Ft.

SHEET NUMBER
03