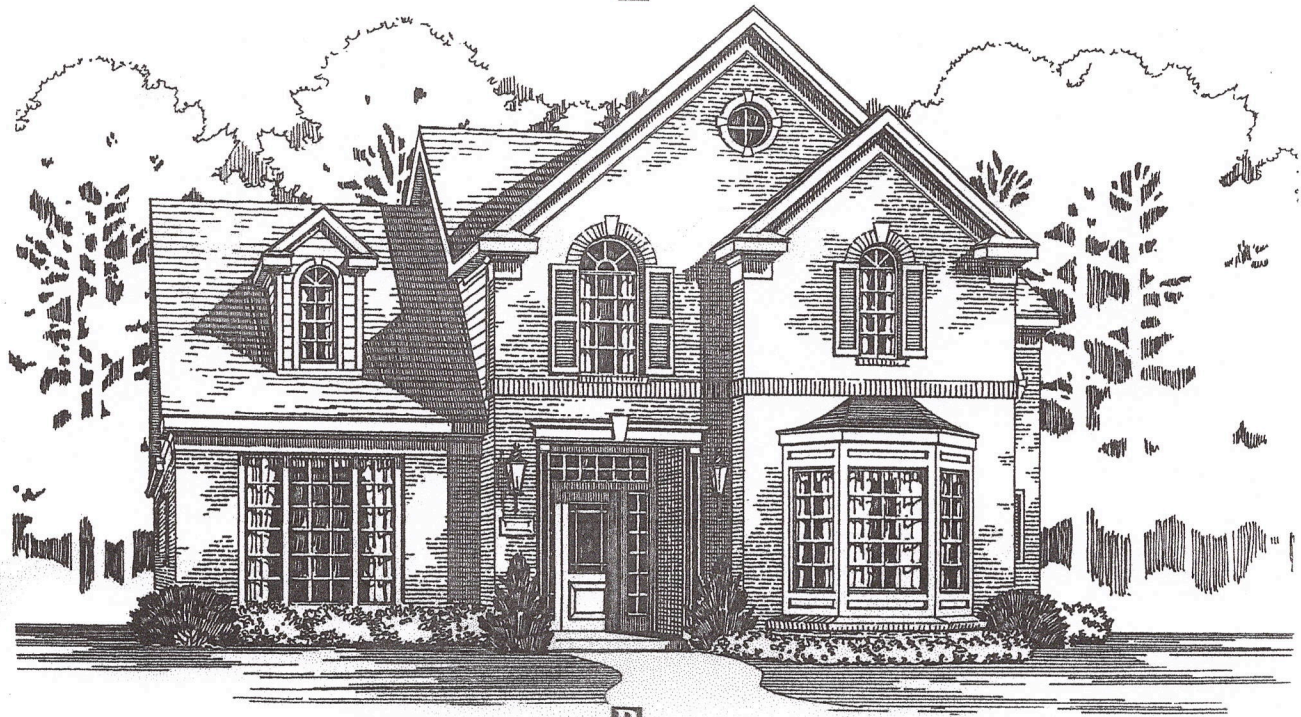


# LISBON

PLAN 377 - 3335 Sq. Ft.



A



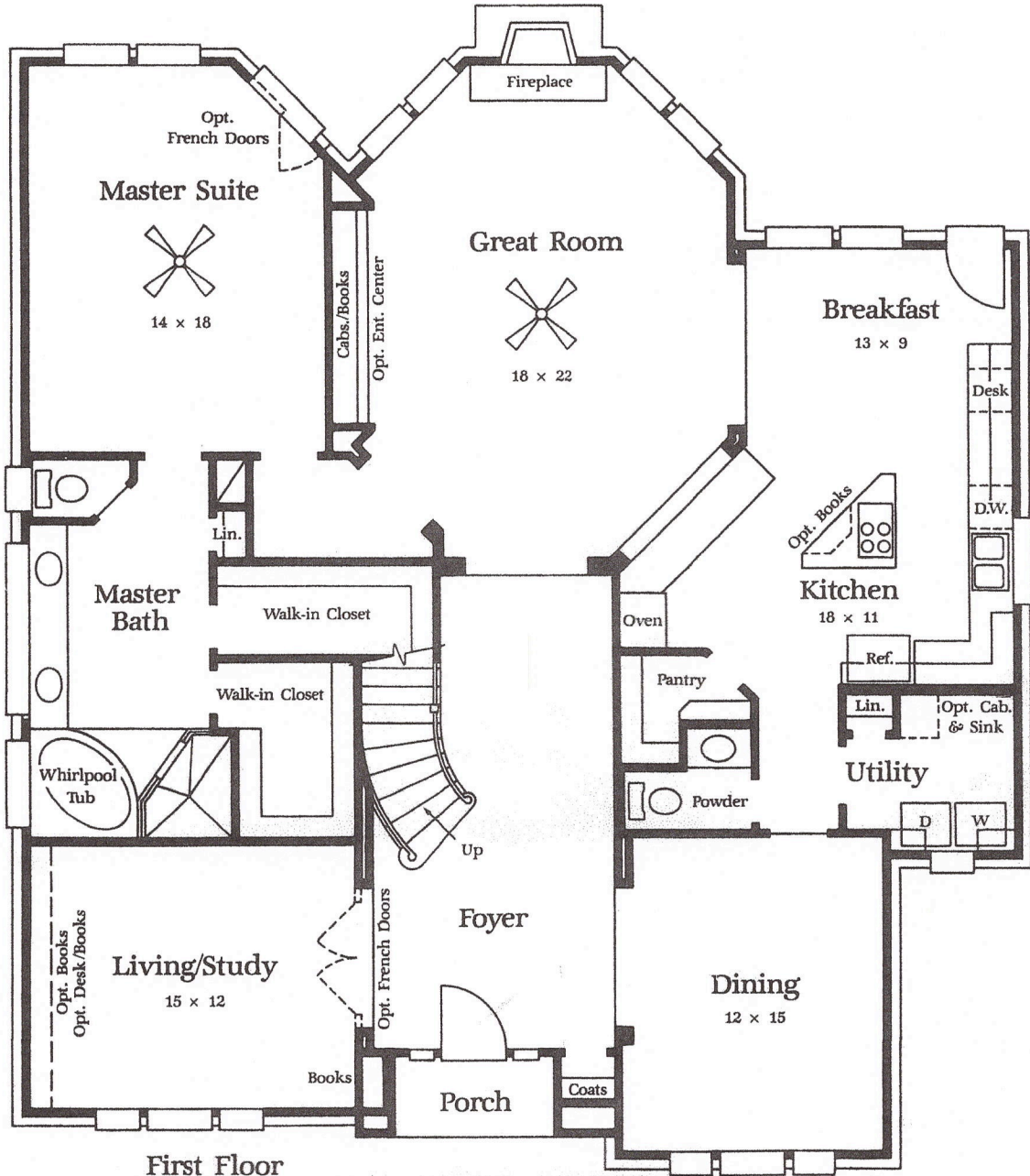
B

VB

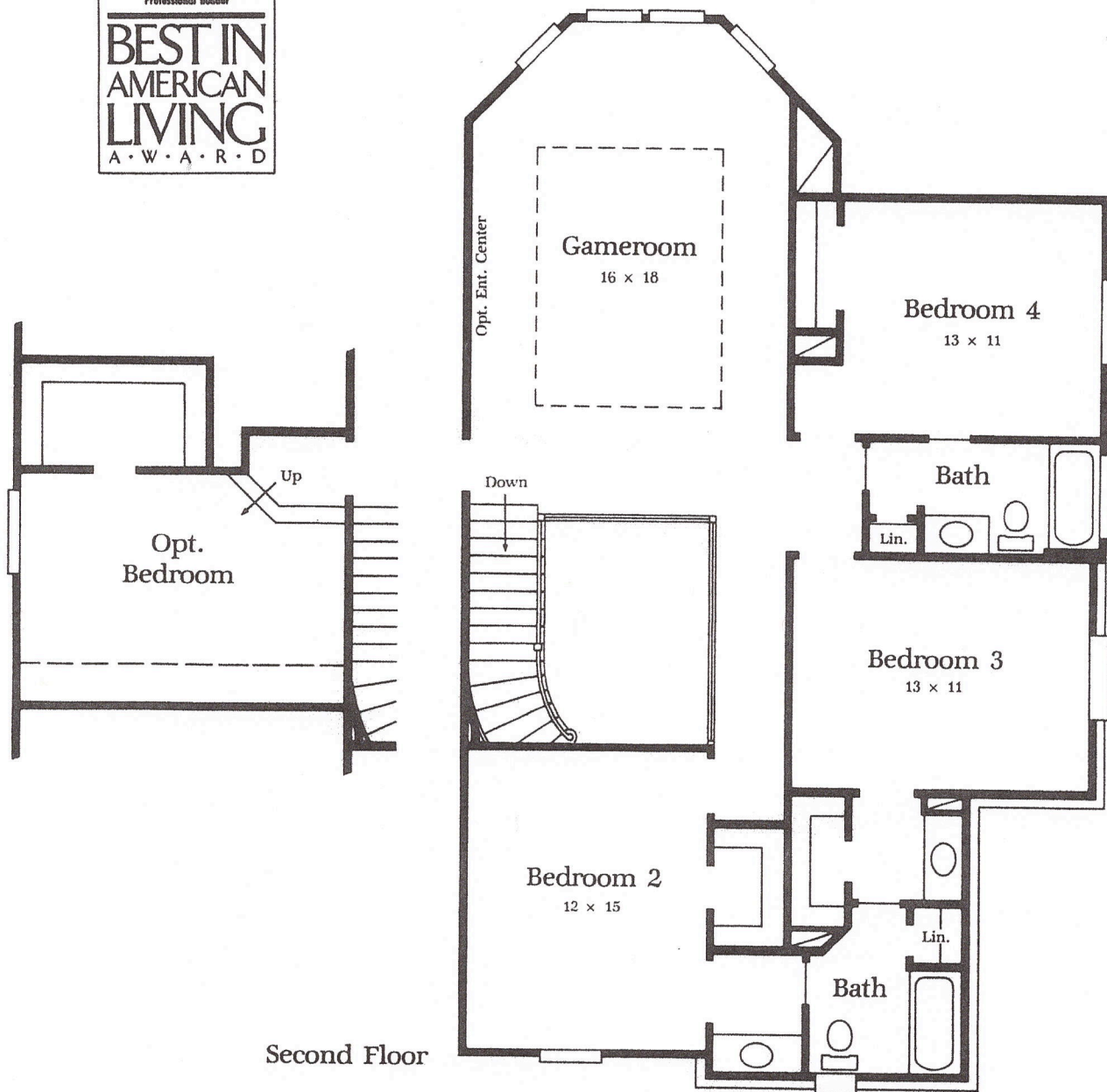
# LISBON

PLAN 377 - 3335 SQ. FT.

w/ Opt. Bedroom - 3671 sq. ft.  
w/ Breakfast Add - 3749 sq. ft.



First Floor



Second Floor

- Dramatic foyer with curved staircase and two-story vestibule.
- Unique octagonal-shaped family room with built-in entertainment center and innovative back-vent fireplace surrounded by windows.
- Spacious kitchen opens to a family room and includes large island with cook-top, desk with built-in bookshelves and walk-in pantry.
- Formal living room can easily be converted to a study with French doors and bookshelves.
- Comfortable master suite with 10-foot ceiling and optional French doors.
- Sumptuous master bath with his and hers walk-in closets, corner tub, transom windows and make-up desk.