

ACT | ACT  
ONE | TWO



# CITY OF FIRSTS

المدينة المبادرة

# EMAAR PROPERTIES

## إعمار العقارية

Established in 1997, Emaar Properties is a pioneering developer of integrated, master-planned communities. Emaar is behind some of the world's most iconic projects including Burj Khalifa, The Dubai Mall, The Dubai Fountain and Downtown Dubai, Emaar's flagship development.

Emaar Properties has extended its expertise, developing competencies in hospitality, leisure and retail. It has been shaping landscapes and lives since its inception and has mastered the development of communities that meet the full spectrum of lifestyle.

شركة إعمار العقارية، التي تأسست عام ١٩٩٧، هي مطور عقاري رائد للمجمعات السكنية المتكاملة المخططة بعناية. وتقف إعمار خلف بعض أشهر المشاريع في العالم بما في ذلك برج خليفة، ودبي مول، ونافورة دبي، ووسط مدينة دبي، المشروع الرئيسي لشركة إعمار.

وقد وسعت شركة إعمار خبراتها، وإمكاناتها التطويرية في قطاع الضيافة، والترفيه، والبيع بالتجزئة، وكانت ولا تزال تضع تصاميم المشاهد الطبيعية وتخطط أساليب الحياة منذ بداية عملها حتى أتقنت تطوير المجمعات التي توفر طيفاً كاملاً من متطلبات الحياة الراقية.

# THE HEART OF ICONS

قلب المعالم الشهيرة

# DOWNTOWN DUBAI

## إعمار العقارية

Downtown Dubai, Emaar's flagship development, is a mixed-use, 500-acre project, and boasts world-class assets including commercial, residential, hospitality, entertainment, shopping, and leisure. The integrated development is set in open, green spaces and is dotted with lakes and other distinct water features, making something as simple as a walk a memorable and enchanting experience.

يعتبر وسط مدينة دبي من أهم المشاريع لشركة إعمار العقارية، وهو مشروع متعدد الاستخدامات يمتد على مساحة 500 فدان، ويفخر بمنشآت عالمية المستوى تشمل مرافق تجارية وسكنية وفنادق ومراكز الترفيه والتسوق والتسليّة. أقيم المشروع المتكامل بين مساحات خضراء مفتوحة تتخللها البحيرات وغيرها من المسطحات المائية المتميزة، مما يجعل من النزهة البسيطة سيراً على الأقدام بين أرجائه تجربة ساحرة لا تنسى.



## THE OPERA DISTRICT

### منطقة دار الأوبرا

The new and thriving cultural soul of Dubai is flourishing in The Opera District. The multi-feature development is set to promote the arts, culture, and events scene by showcasing incredible performers from all over the world and promoting local and talented artists. Nestled at the heart of The Opera District is Dubai Opera, a multi-format performing arts centre, as iconic in appearance as the world-famous Sydney Opera House, its style inspired by the classic wooden dhows.

تنبض روح دبي الثقافية الجديدة والمزدهرة بالحياة في منطقة دار الأوبرا. فقد أقيم المشروع متعدد المزايا ليرتقي بالفنون، والثقافة، والفعاليات، وذلك بتقديم المؤدين الرائعين من كافة أنحاء العالم، ودعم الفنانين المحليين الموهوبين. تقع دبي أوبرا في قلب منطقة دار الأوبرا، وهي مركز متعدد الأغراض للفنون المسرحية، يتميز بروعة تصميمه الذي يضاها دار أوبرا سيدني العالمية الشهيرة، مستوحى من قوارب الداو الخشبية الكلاسيكية.

# ACT ONE ACT TWO

آکت ون | آکت تو

# ACT ONE ACT TWO

آكت ون | آكت تو

The exceptional residential tower, Act One | Act Two, rises at the heart of the Opera District, flanking The Opera House. The tower's design was inspired by the iconic Dubai Fountain and, apart from providing a dynamic facade, stands at the gateway to the world's most notable project, Burj Khalifa.

يقع آكت ون | آكت تو ، البرج السكني المذهل، في قلب منطقة دار الأوبرا. يتميز بتصميم رائع مستوحى من نافورة دبي، ليشكل طوقاً حول دار الأوبرا. وعلاوة على أنه واجهة تفيض بالحيوية، تقع عند مدخل المشروع الأبرز في العالم ، برج خليفة.





# EXPLORE THE EXCEPTIONAL

تعرف على المعايير الاستثنائية

Rising on the right side of The Opera House, Act One | Act Two offers unreal views of The Dubai Fountain and Burj Khalifa. With its prime location in Downtown Dubai, residents of the tower can expect to be part of grand celebrations and entertainment events throughout the year, not to mention their ideal location in the only cultural and entertainment hub in the GCC.

يرتفع برج آكت ون | آكت تو على جانب دار الأوبرا ويتمتع بإطلالات لا تضاهى على نافورة دبي وبرج خليفة. ويمتاز البرج بموقع في وسط مدينة دبي يتيح للمقيمين فيه التطلع ليكونوا جزءاً من الاحتفالات الكبرى والفعاليات الترفيهية على مدار العالم، ناهيك عن كونه موقعاً مثالياً في المركز الثقافي الوحيد في دول مجلس التعاون الخليجي.

# AT THE HEART

في القلب

The tower grants residents ready access to a gym, a health club, and luxurious restaurants and cafes that cater to a wide range of tastes. This prime residential address is a walk away from major attractions like The Dubai Mall, The Dubai Fountain and Souk al Bahar, among others. With its proximity to the Dubai Metro, the whole city is within reach. Residents of Act One | Act Two enjoy views of Burj Khalifa and the Boulevard, guaranteeing memorable experiences.

يتمتع المقيمون في البرج بسهولة الوصول إلى صالة ألعاب رياضية، وناجٍ صحي، ومطاعم ومقاهي فاخرة ترضي مجموعة واسعة من الأذواق. تجتمع هذه المزايا ضمن عنوان سكني متميز يقع على مسافة قصيرة من مواقع الجذب السياحية الأساسية مثل دبي مول، ونافورة دبي، وسوق البحار، من بين أماكن أخرى. ومع قربه من مترو دبي أصبح الوصول إلى المدينة بأكملها أمراً يسيراً. يتمتع المقيمون في البرج بإطلالة على برج خليفة والبوليفارد، مما يضمن لهم تجارب لا تُنسى.

# A SPARK OF INSPIRATION

ومضة إلهام

Inspired by one of Dubai's most popular attractions, Act One | Act Two embodies the dynamic features of the dancing Dubai Fountain. The stepping massing create a unique exterior facade while maintaining a practical purpose. The horizontal stepping creates wider views of Burj Khalifa while the vertical stepping reflects the dancing fountain's vertical motion and provides a variable range of roof terraces and balconies, each offering a unique view. The two towers act as a gateway for Burj Khalifa and their podium connection acts as a frame, providing pedestrians passing under it with an interesting experience.

بتصميمه المستلهم من نافورة دبي الراقصة، التي تعد واحدة من أشهر مواقع الجذب السياحي بدبي، يجسد برج أكت ون | أكت تو مزايًا هذا المَعلم المفعم بالحيوية. ويشكل البناء المتدرج واجهة خارجية فريدة. ويمنح التدرج الأفقي إطلالات أكثر اتساعاً على برج خليفة، في حين أن التدرج العمودي يعكس الحركة العمودية للنافورة الراقصة ويقدم مجموعة متنوعة من الشرفات التي تتيح كل منها إطلالة فريدة. يعد البرجان بمثابة مدخل إلى برج خليفة وتعمل وصلة المنصة بهما كإطار يمنح للمشاة المارين تحته تجربة شيّقة.

# A LIFE OF LUXURY

حياة من الفخامة

Act One | Act Two hosts a range of apartments from 1-3 bedroom units. The interiors of Act One | Act Two are tastefully designed and crafted to embody style and contemporary class. A marvellous life awaits you in The Opera District.

يضم Act One | Act Two مجموعة من الشقق من ١ إلى ٣ غرف نوم، وبذوق رفيع يتم عن الإقني، وضعت التصميم الداخلي لآكت ون | آكت تو، ونقدت باتقان لتجسد الأناقة المعاصرة، ففي منطقة دار الأوبرا تنتظرك حياة رائعة.



# INTERIORS

تصاميم داخلية



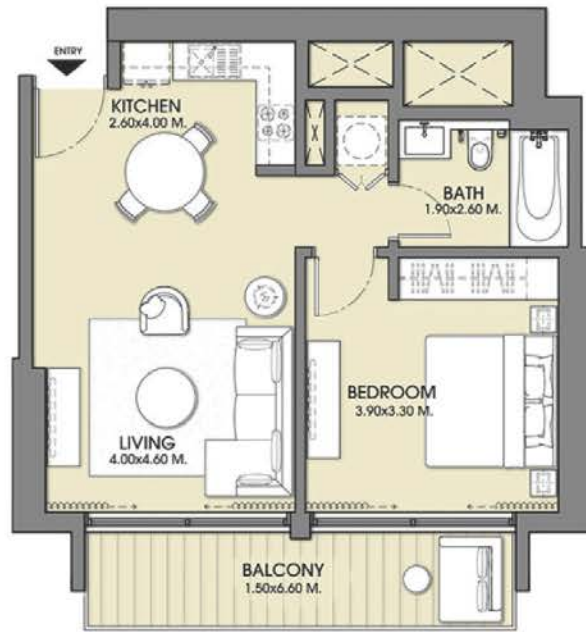










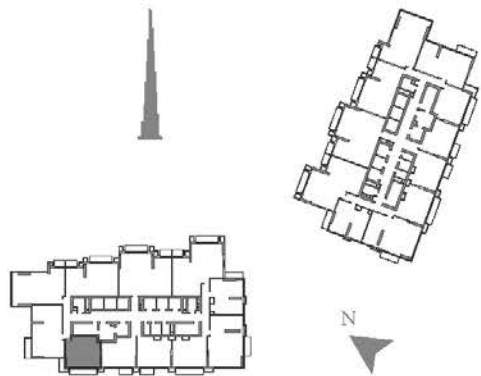


1 BEDROOM - 01

UNIT 07

TOWER 1 - ZONE 1

LEVELS: L06-L15



SELLABLE AREA

	sq.m	sq.ft
Suite Area	57.35	617
Balcony Area	10.81	116
Total Area	68.16	733

1. All dimensions are in imperial and metric, and measured to structural elements and exclude wall finishes and construction tolerances. 2. All materials, dimensions, and drawings are approximate only. 3. Information is subject to change without notice, at developer's absolute discretion. 4. Actual area may vary from the stated area. 5. Drawings not to scale. 6. All images used are for illustrative purposes only and do not represent the actual size, features, specifications, fittings, and furnishings. 7. The developer reserves the right to make revisions/alterations, at its absolute discretion, without any liability whatsoever.

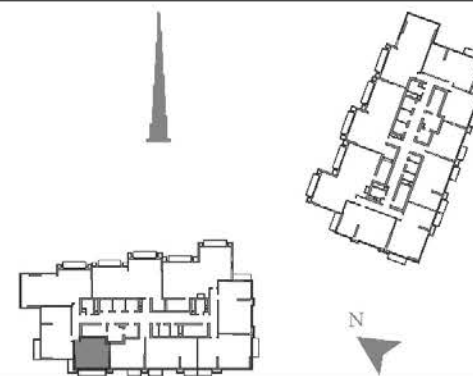


1 BEDROOM - 01

UNIT 06

TOWER 1 - ZONE 2

LEVELS: L18-L29



SELLABLE AREA

	sq.m	sq.ft
Suite Area	57.47	619
Balcony Area	10.81	116
Total Area	68.28	735

1. All dimensions are in imperial and metric, and measured to structural elements and exclude wall finishes and construction tolerances. 2. All materials, dimensions, and drawings are approximate only. 3. Information is subject to change without notice, at developer's absolute discretion. 4. Actual area may vary from the stated area. 5. Drawings not to scale. 6. All images used are for illustrative purposes only and do not represent the actual size, features, specifications, fittings, and furnishings. 7. The developer reserves the right to make revisions/alterations, at its absolute discretion, without any liability whatsoever.

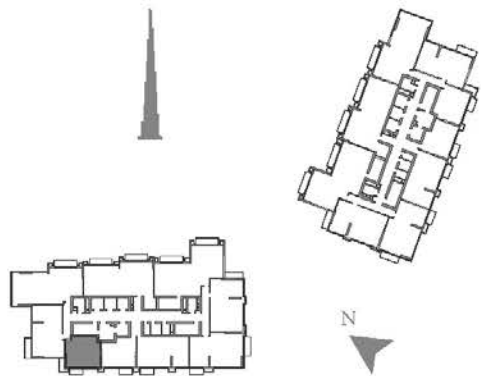


1 BEDROOM - 01A

UNIT 06

TOWER 1 - ZONE 2

LEVELS: L30,L32-L44



SELLABLE AREA

	sq.m	sq.ft
Suite Area	57.47	619
Balcony Area	5.36	58
Total Area	62.83	677

1. All dimensions are in imperial and metric, and measured to structural elements and exclude wall finishes and construction tolerances. 2. All materials, dimensions, and drawings are approximate only. 3. Information is subject to change without notice, at developer's absolute discretion. 4. Actual area may vary from the stated area. 5. Drawings not to scale. 6. All images used are for illustrative purposes only and do not represent the actual size, features, specifications, fittings, and furnishings. 7. The developer reserves the right to make revisions/alterations, at its absolute discretion, without any liability whatsoever.

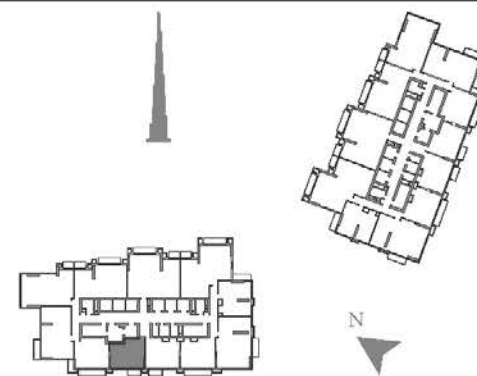


1 BEDROOM - 02

UNIT 06

TOWER 1 - ZONE 1

LEVELS: L06-L15



SELLABLE AREA

	sq.m	sq.ft
Suite Area	56.47	608
Balcony Area	5.36	58
Total Area	61.83	666

1. All dimensions are in imperial and metric, and measured to structural elements and exclude wall finishes and construction tolerances. 2. All materials, dimensions, and drawings are approximate only. 3. Information is subject to change without notice, at developer's absolute discretion. 4. Actual area may vary from the stated area. 5. Drawings not to scale. 6. All images used are for illustrative purposes only and do not represent the actual size, features, specifications, fittings, and furnishings. 7. The developer reserves the right to make revisions/alterations, at its absolute discretion, without any liability whatsoever.

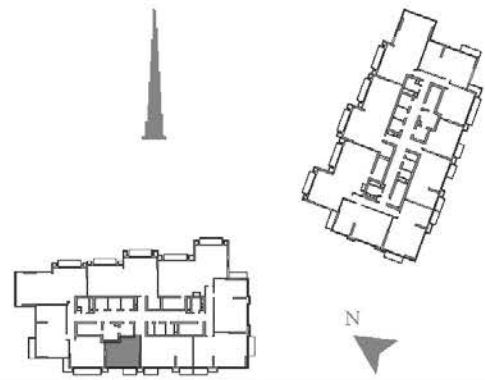


1 BEDROOM - 02

UNIT 05

TOWER 1 - ZONE 2

LEVELS: L18-L30,L32



SELLABLE AREA

	sq.m	sq.ft
Suite Area	56.47	608
Balcony Area	5.36	58
Total Area	61.83	666

1. All dimensions are in imperial and metric, and measured to structural elements and exclude wall finishes and construction tolerances. 2. All materials, dimensions, and drawings are approximate only. 3. Information is subject to change without notice, at developer's absolute discretion. 4. Actual area may vary from the stated area. 5. Drawings not to scale. 6. All images used are for illustrative purposes only and do not represent the actual size, features, specifications, fittings, and furnishings. 7. The developer reserves the right to make revisions/alterations, at its absolute discretion, without any liability whatsoever.

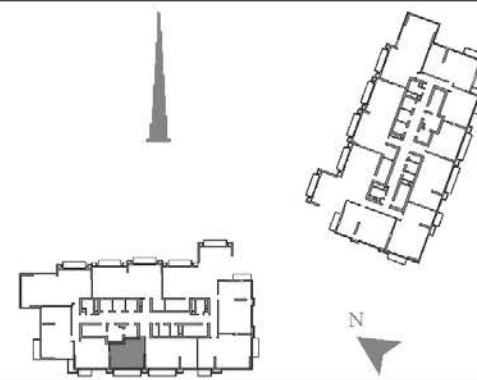


1 BEDROOM - 02A

UNIT 05

TOWER 1 - ZONE 2

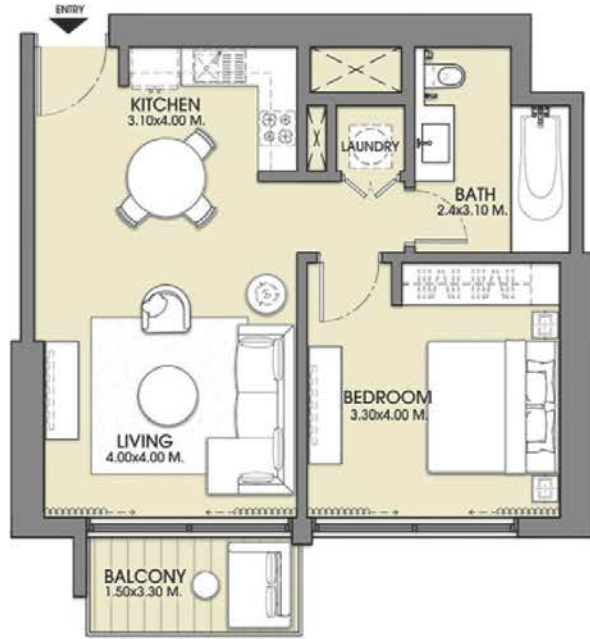
LEVELS: L33-L44



SELLABLE AREA

	sq.m	sq.ft
Suite Area	56.47	608
Balcony Area	10.81	116
Total Area	67.28	724

1. All dimensions are in imperial and metric, and measured to structural elements and exclude wall finishes and construction tolerances. 2. All materials, dimensions, and drawings are approximate only. 3. Information is subject to change without notice, at developer's absolute discretion. 4. Actual area may vary from the stated area. 5. Drawings not to scale. 6. All images used are for illustrative purposes only and do not represent the actual size, features, specifications, fittings, and furnishings. 7. The developer reserves the right to make revisions/alterations, at its absolute discretion, without any liability whatsoever.

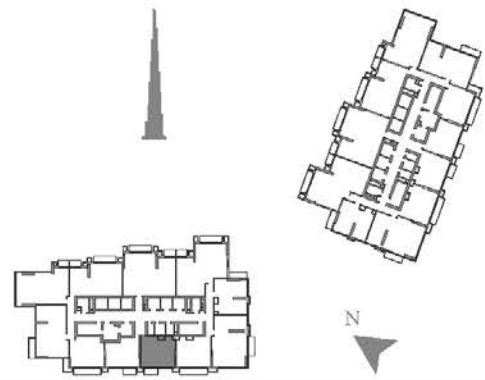


1 BEDROOM - 03

UNIT 05

TOWER 1 - ZONE 1

LEVELS: L06-L15



SELLABLE AREA

	sq.m	sq.ft
Suite Area	60.64	653
Balcony Area	5.36	58
Total Area	66.00	711

1. All dimensions are in imperial and metric, and measured to structural elements and exclude wall finishes and construction tolerances. 2. All materials, dimensions, and drawings are approximate only. 3. Information is subject to change without notice, at developer's absolute discretion. 4. Actual area may vary from the stated area. 5. Drawings not to scale. 6. All images used are for illustrative purposes only and do not represent the actual size, features, specifications, fittings, and furnishings. 7. The developer reserves the right to make revisions/alterations, at its absolute discretion, without any liability whatsoever.

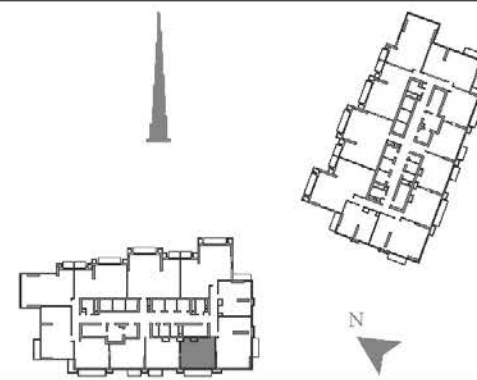


1 BEDROOM - 04

UNIT 04

TOWER 1 - ZONE 1

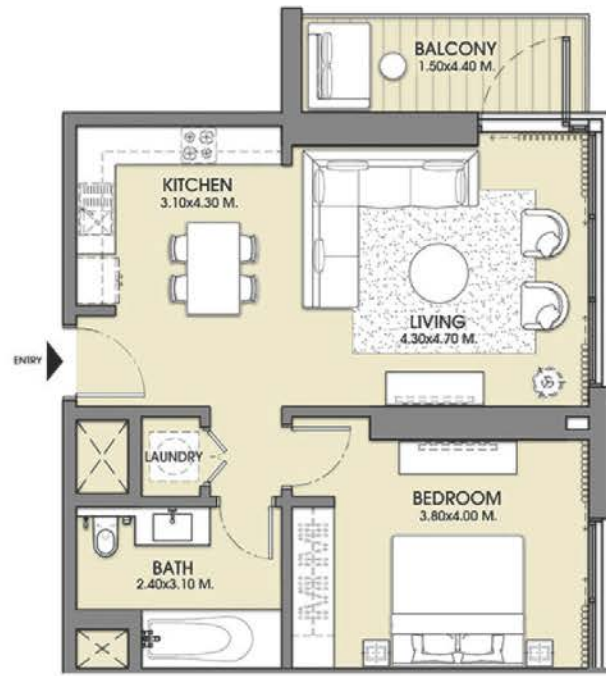
LEVELS: L06-L15



SELLABLE AREA

	sq.m	sq.ft
Suite Area	61.05	657
Balcony Area	10.81	116
Total Area	71.86	773

1. All dimensions are in imperial and metric, and measured to structural elements and exclude wall finishes and construction tolerances. 2. All materials, dimensions, and drawings are approximate only. 3. Information is subject to change without notice, at developer's absolute discretion. 4. Actual area may vary from the stated area. 5. Drawings not to scale. 6. All images used are for illustrative purposes only and do not represent the actual size, features, specifications, fittings, and furnishings. 7. The developer reserves the right to make revisions/alterations, at its absolute discretion, without any liability whatsoever.

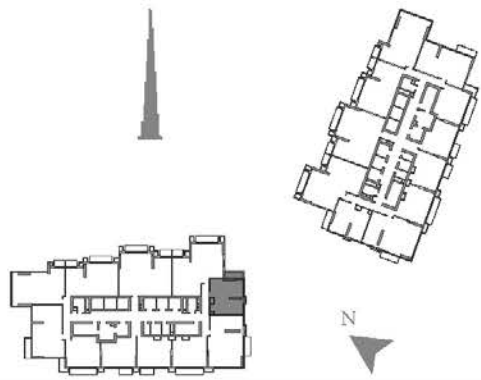


1 BEDROOM - 05

UNIT 02

TOWER 1 - ZONE 1

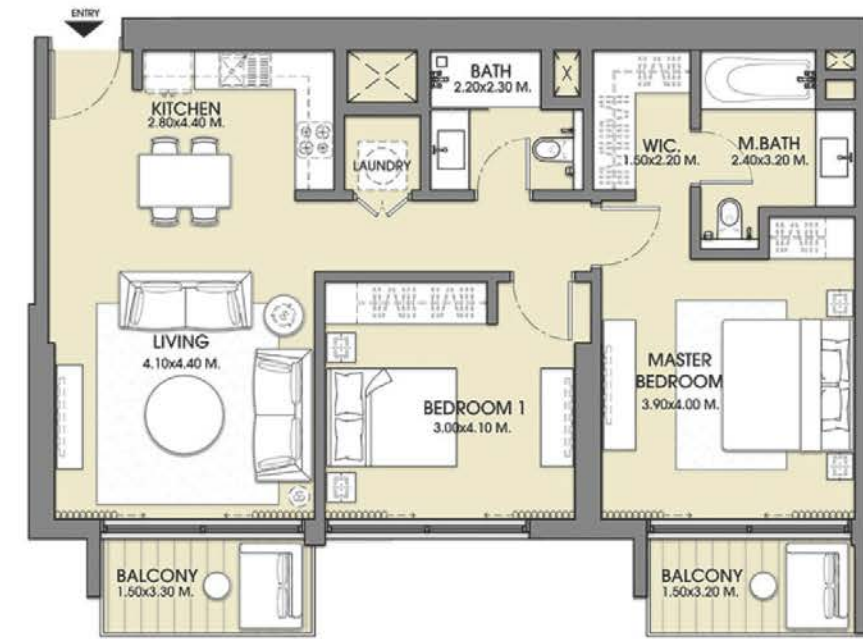
LEVELS: L06-L15



SELLABLE AREA

	sq.m	sq.ft
Suite Area	64.80	698
Balcony Area	7.85	84
Total Area	72.65	782

1. All dimensions are in imperial and metric, and measured to structural elements and exclude wall finishes and construction tolerances. 2. All materials, dimensions, and drawings are approximate only. 3. Information is subject to change without notice, at developer's absolute discretion. 4. Actual area may vary from the stated area. 5. Drawings not to scale. 6. All images used are for illustrative purposes only and do not represent the actual size, features, specifications, fittings, and furnishings. 7. The developer reserves the right to make revisions/alterations, at its absolute discretion, without any liability whatsoever.

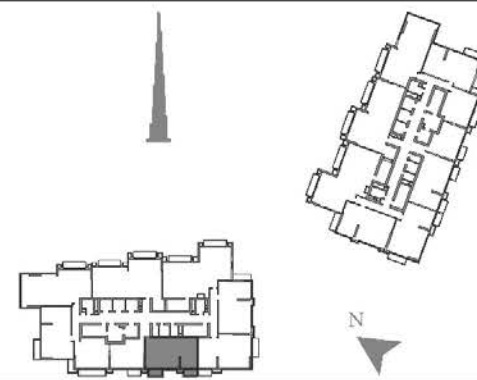


2 BEDROOM - 01

UNIT 04

TOWER 1 - ZONE 2

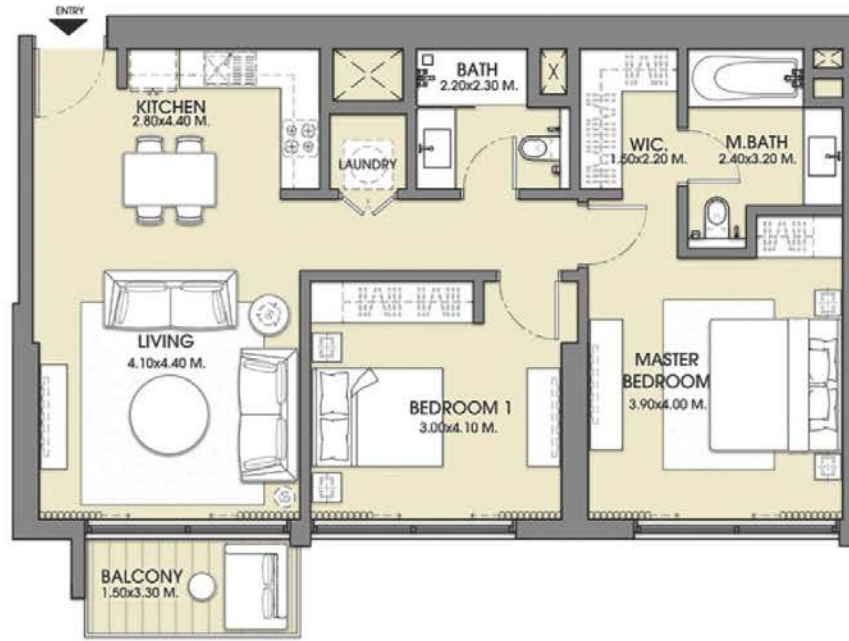
LEVELS: L18-L29



SELLABLE AREA

	sq.m	sq.ft
Suite Area	93.20	1003
Balcony Area	10.76	116
Total Area	103.96	1119

1. All dimensions are in imperial and metric, and measured to structural elements and exclude wall finishes and construction tolerances. 2. All materials, dimensions, and drawings are approximate only. 3. Information is subject to change without notice, at developer's absolute discretion. 4. Actual area may vary from the stated area. 5. Drawings not to scale. 6. All images used are for illustrative purposes only and do not represent the actual size, features, specifications, fittings, and furnishings. 7. The developer reserves the right to make revisions/alterations, at its absolute discretion, without any liability whatsoever.

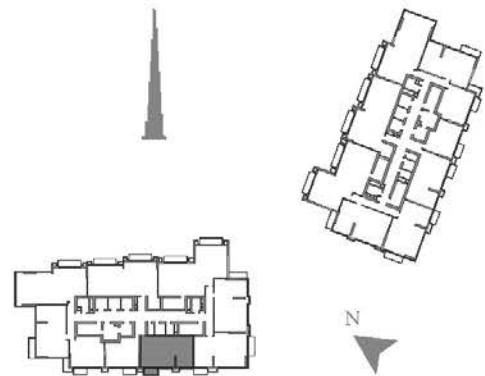


2 BEDROOM - 01A

UNIT 04

TOWER 1 - ZONE 2

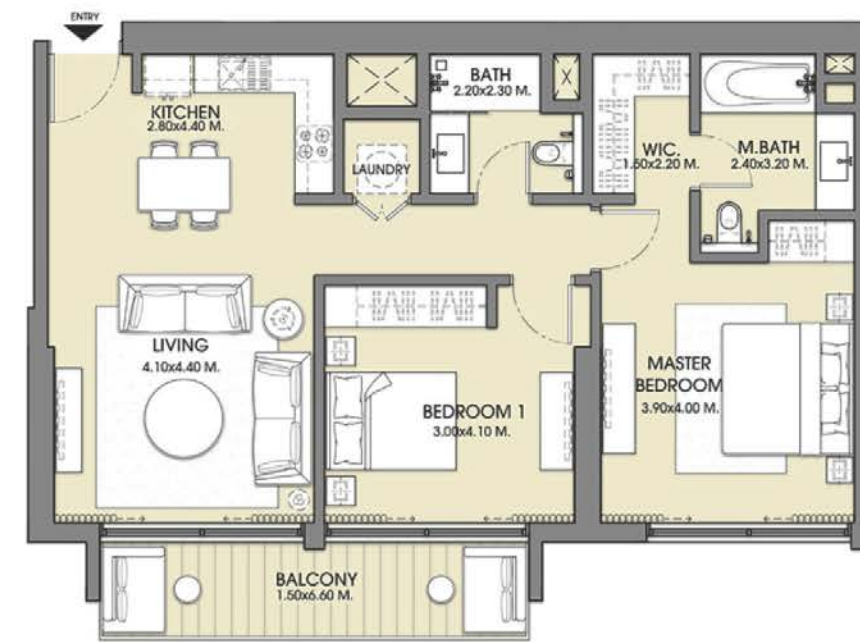
LEVELS: L30,L32



SELLABLE AREA

	sq.m	sq.ft
Suite Area	93.20	1003
Balcony Area	5.36	58
Total Area	98.56	1061

1. All dimensions are in imperial and metric, and measured to structural elements and exclude wall finishes and construction tolerances. 2. All materials, dimensions, and drawings are approximate only. 3. Information is subject to change without notice, at developer's absolute discretion. 4. Actual area may vary from the stated area. 5. Drawings not to scale. 6. All images used are for illustrative purposes only and do not represent the actual size, features, specifications, fittings, and furnishings. 7. The developer reserves the right to make revisions/alterations, at its absolute discretion, without any liability whatsoever.

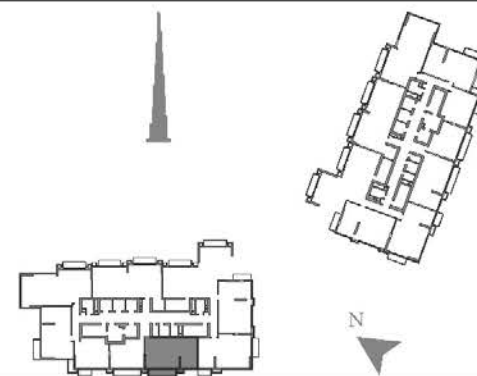


2 BEDROOM - 01B

UNIT 04

TOWER 1 - ZONE 2

LEVELS: L33-L44

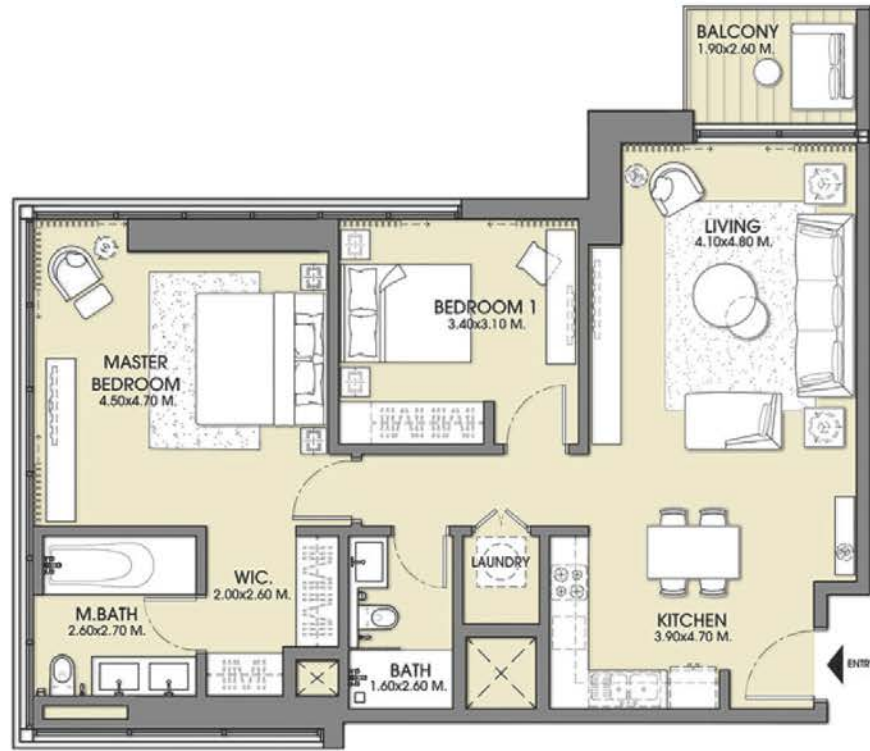


SELLABLE AREA

	sq.m	sq.ft
Suite Area	93.20	1003
Balcony Area	10.81	116
Total Area	104.01	1119

1. All dimensions are in imperial and metric, and measured to structural elements and exclude wall finishes and construction tolerances. 2. All materials, dimensions, and drawings are approximate only. 3. Information is subject to change without notice, at developer's absolute discretion. 4. Actual area may vary from the stated area. 5. Drawings not to scale. 6. All images used are for illustrative purposes only and do not represent the actual size, features, specifications, fittings, and furnishings. 7. The developer reserves the right to make revisions/alterations, at its absolute discretion, without any liability whatsoever.



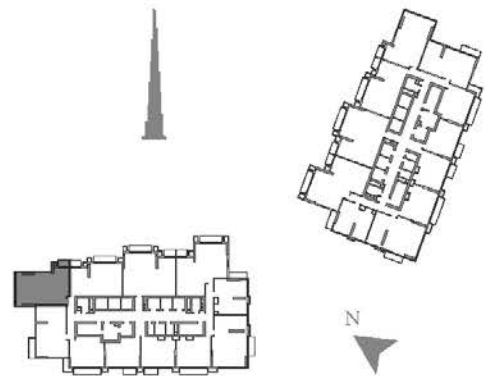


2 BEDROOM - 05

UNIT 09

TOWER 1 - ZONE 1

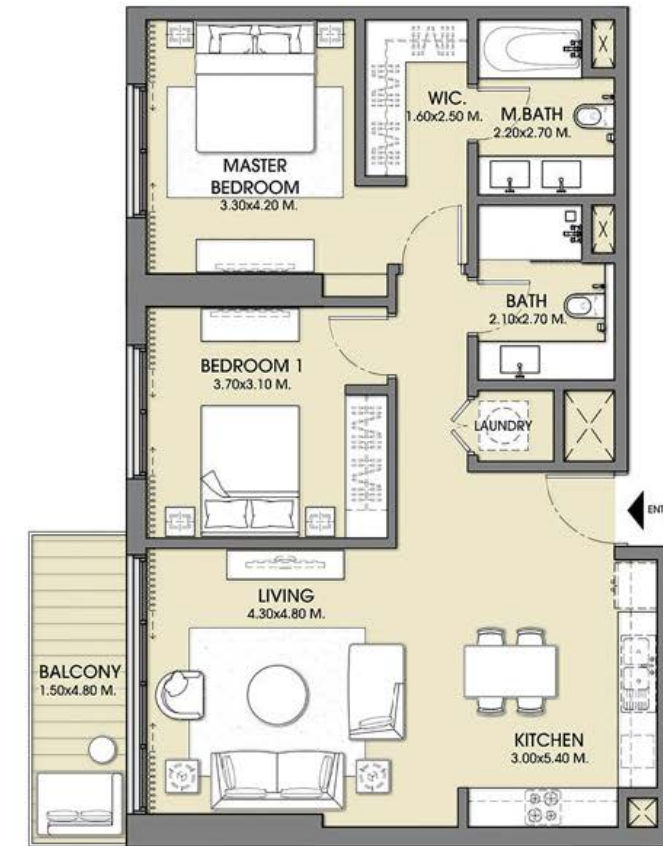
LEVELS: L06-L15



SELLABLE AREA

	sq.m	sq.ft
Suite Area	98.27	1058
Balcony Area	4.49	48
Total Area	102.76	1106

1. All dimensions are in Imperial and metric, and measured to structural elements and exclude wall finishes and construction tolerances. 2. All materials, dimensions, and drawings are approximate only. 3. Information is subject to change without notice, at developer's absolute discretion. 4. Actual area may vary from the stated area. 5. Drawings not to scale. 6. All images used are for illustrative purposes only and do not represent the actual size, features, specifications, fittings, and furnishings. 7. The developer reserves the right to make revisions/alterations, at its absolute discretion, without any liability whatsoever.

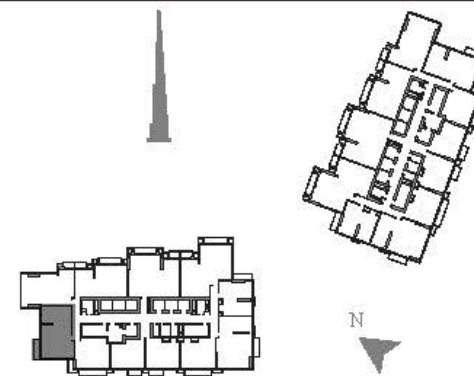


2 BEDROOM - 06

UNIT 08

TOWER 1 - ZONE 1

LEVELS: L-06L15



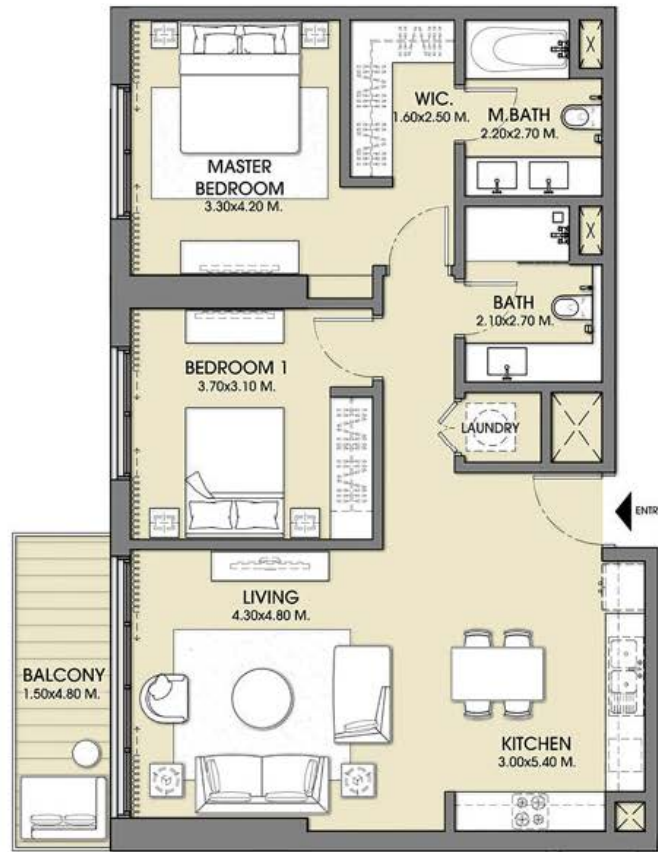
SELLABLE AREA

	sq.m	sq.ft
Suite Area	93.86	1010
Balcony Area	8.36	90
Total Area	102.22	1100

1. All dimensions are in Imperial and metric, and measured to structural elements and exclude wall finishes and construction tolerances. 2. All materials, dimensions, and drawings are approximate only. 3. Information is subject to change without notice, at developer's absolute discretion. 4. Actual area may vary from the stated area. 5. Drawings not to scale. 6. All images used are for illustrative purposes only and do not represent the actual size, features, specifications, fittings, and furnishings. 7. The developer reserves the right to make revisions/alterations, at its absolute discretion, without any liability whatsoever.



ACT|ACT  
ONE|TWO



2 BEDROOM - 06

UNIT 07

TOWER 1 - ZONE 2

LEVELS: L-18L30, L-32L35



ACT|ACT  
ONE|TWO

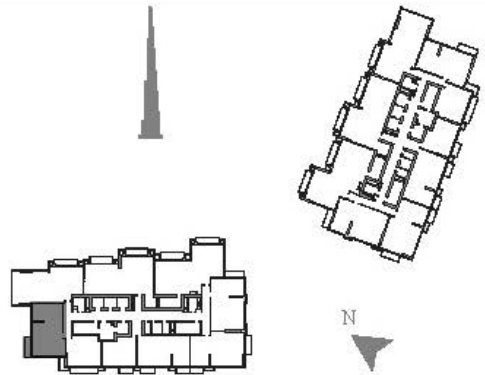


2 BEDROOM - 06

UNIT 07

TOWER 1 - ZONE 2

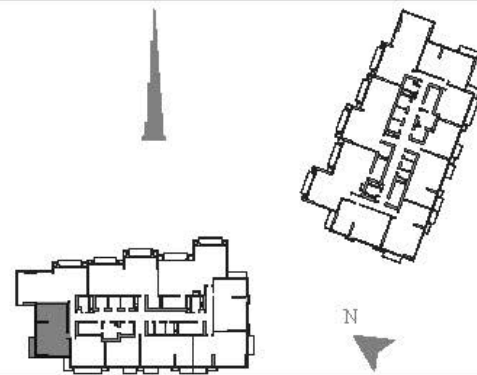
LEVELS: L-36L44



SELLABLE AREA

	sq.m	sq.ft
Suite Area	94.00	1012
Balcony Area	8.36	90
Total Area	102.36	1102

1. All dimensions are in imperial and metric, and measured to structural elements and exclude wall finishes and construction tolerances. 2. All materials, dimensions, and drawings are approximate only. 3. Information is subject to change without notice, at developer's absolute discretion. 4. Actual area may vary from the stated area. 5. Drawings not to scale. 6. All images used are for illustrative purposes only and do not represent the actual size, features, specifications, fittings, and furnishings. 7. The developer reserves the right to make revisions/alterations, at its absolute discretion, without any liability whatsoever.



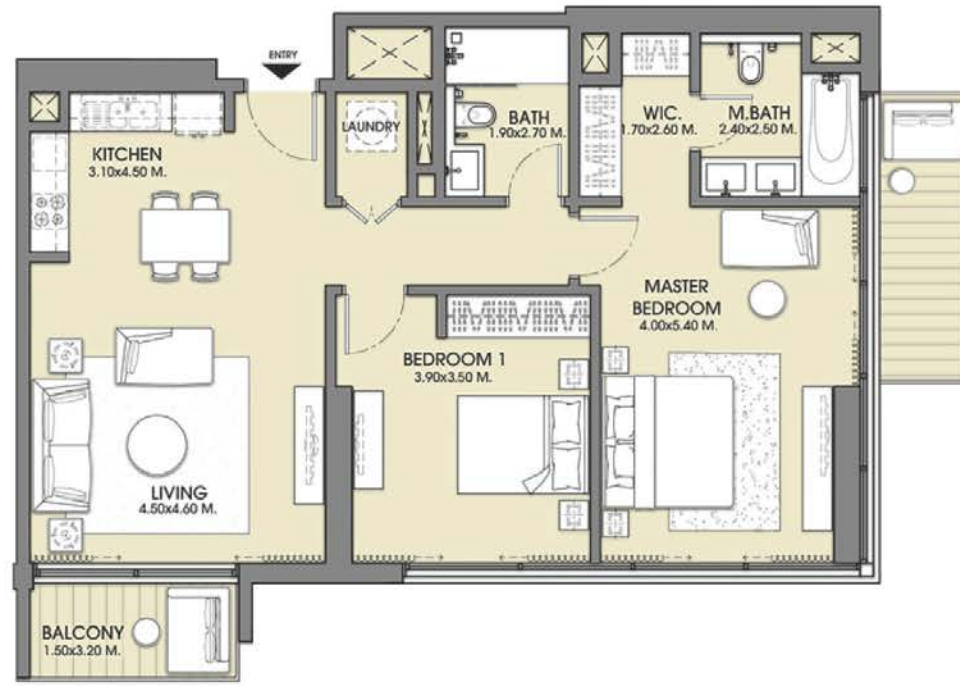
SELLABLE AREA

	sq.m	sq.ft
Suite Area	93.96	1011
Balcony Area	8.36	90
Total Area	102.32	1101

1. All dimensions are in imperial and metric, and measured to structural elements and exclude wall finishes and construction tolerances. 2. All materials, dimensions, and drawings are approximate only. 3. Information is subject to change without notice, at developer's absolute discretion. 4. Actual area may vary from the stated area. 5. Drawings not to scale. 6. All images used are for illustrative purposes only and do not represent the actual size, features, specifications, fittings, and furnishings. 7. The developer reserves the right to make revisions/alterations, at its absolute discretion, without any liability whatsoever.



ACT|ACT  
ONE|TWO



2 BEDROOM - 07

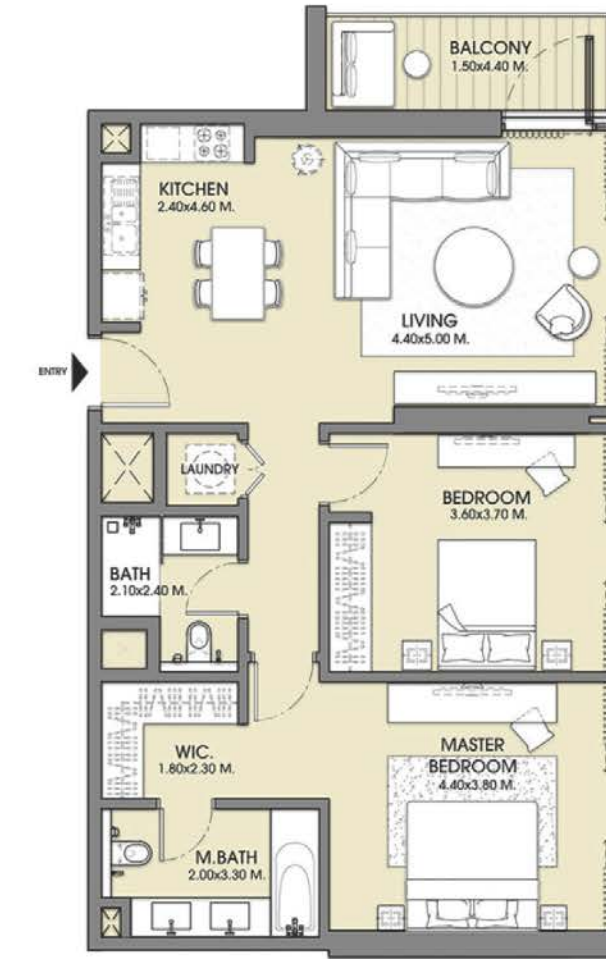
UNIT 03

TOWER 1 - ZONE 2

LEVELS: L18-L30,L32-L44



ACT|ACT  
ONE|TWO

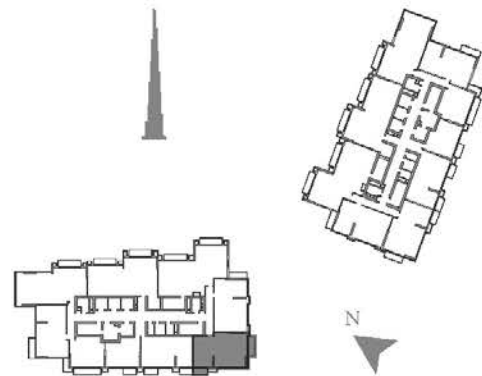


2 BEDROOM - 08

UNIT 02

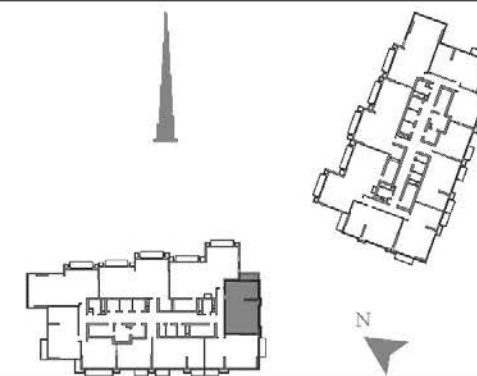
TOWER 1 - ZONE 2

LEVELS: L18-L30,L32-L35



SELLABLE AREA

	sq.m	sq.ft
Suite Area	99.10	1067
Balcony Area	13.19	142
Total Area	112.29	1209



SELLABLE AREA

	sq.m	sq.ft
Suite Area	98.52	1060
Balcony Area	7.71	83
Total Area	106.23	1143

1. All dimensions are in imperial and metric, and measured to structural elements and exclude wall finishes and construction tolerances. 2. All materials, dimensions, and drawings are approximate only. 3. Information is subject to change without notice, at developer's absolute discretion. 4. Actual area may vary from the stated area. 5. Drawings not to scale. 6. All images used are for illustrative purposes only and do not represent the actual size, features, specifications, fittings, and furnishings. 7. The developer reserves the right to make revisions/alterations, at its absolute discretion, without any liability whatsoever.

1. All dimensions are in imperial and metric, and measured to structural elements and exclude wall finishes and construction tolerances. 2. All materials, dimensions, and drawings are approximate only. 3. Information is subject to change without notice, at developer's absolute discretion. 4. Actual area may vary from the stated area. 5. Drawings not to scale. 6. All images used are for illustrative purposes only and do not represent the actual size, features, specifications, fittings, and furnishings. 7. The developer reserves the right to make revisions/alterations, at its absolute discretion, without any liability whatsoever.



ACT | ACT  
ONE | TWO



2 BEDROOM - 08

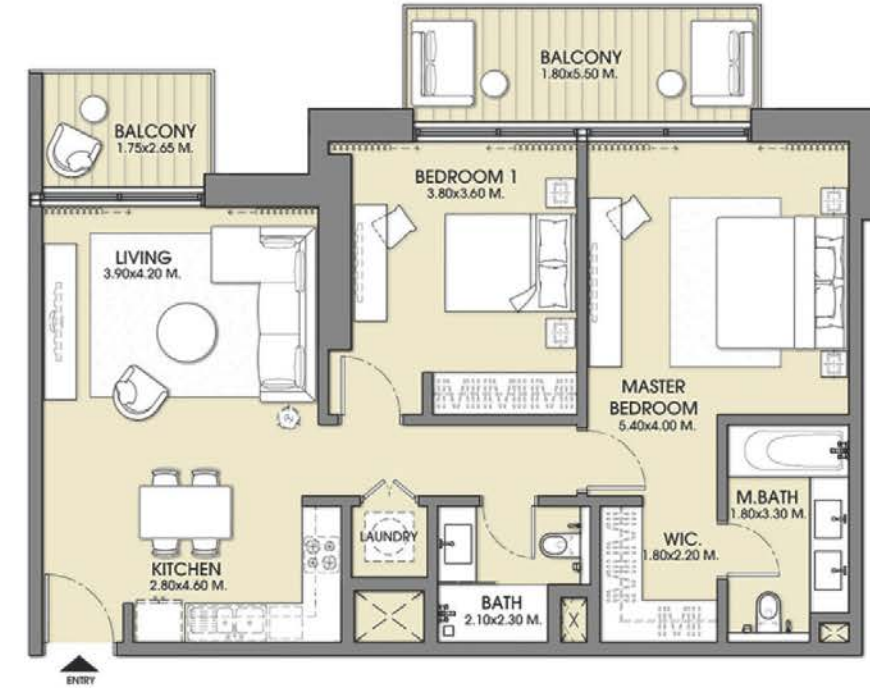
UNIT 02

TOWER 1 - ZONE 2

LEVELS: L36-L44



ACT | ACT  
ONE | TWO

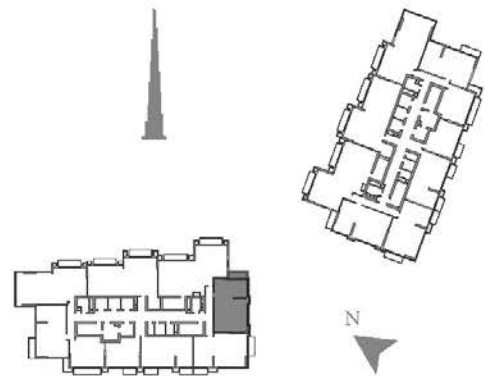


2 BEDROOM - 09

UNIT 10

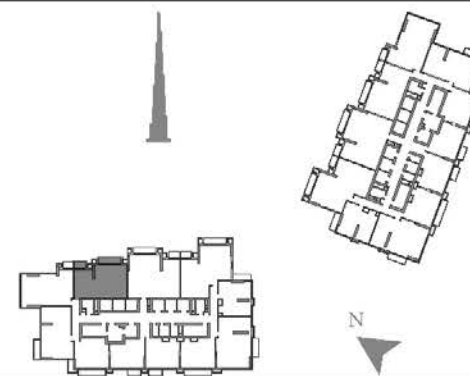
TOWER 1 - ZONE 1

LEVELS: L06-L10



SELLABLE AREA

	sq.m	sq.ft
Suite Area	98.38	1059
Balcony Area	7.71	83
Total Area	106.09	1142

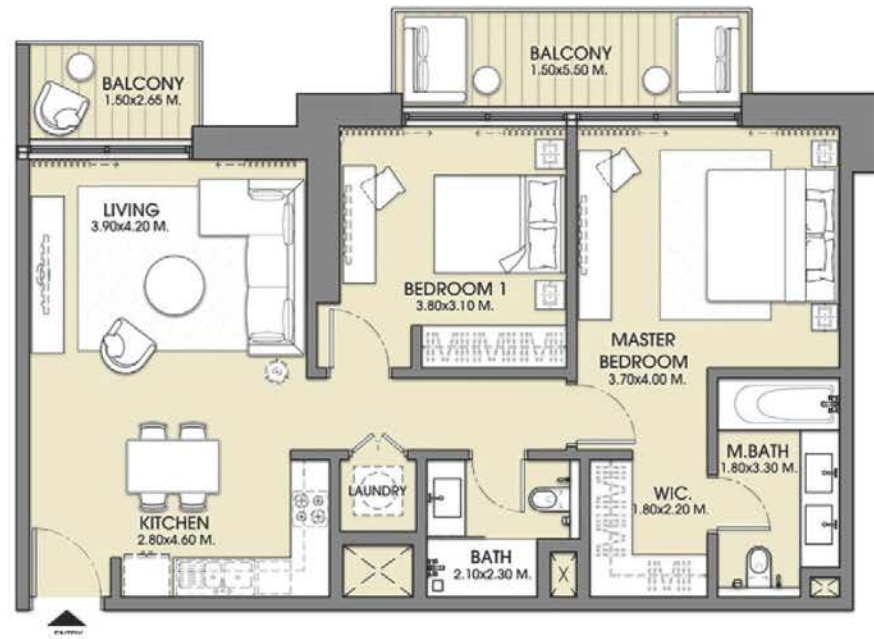


SELLABLE AREA

	sq.m	sq.ft
Suite Area	95.27	1025
Balcony Area	13.48	145
Total Area	108.75	1170

1. All dimensions are in Imperial and metric, and measured to structural elements and exclude wall finishes and construction tolerances. 2. All materials, dimensions, and drawings are approximate only. 3. Information is subject to change without notice, at developer's absolute discretion. 4. Actual area may vary from the stated area. 5. Drawings not to scale. 6. All images used are for illustrative purposes only and do not represent the actual size, features, specifications, fittings, and furnishings. 7. The developer reserves the right to make revisions/alterations, at its absolute discretion, without any liability whatsoever.

1. All dimensions are in Imperial and metric, and measured to structural elements and exclude wall finishes and construction tolerances. 2. All materials, dimensions, and drawings are approximate only. 3. Information is subject to change without notice, at developer's absolute discretion. 4. Actual area may vary from the stated area. 5. Drawings not to scale. 6. All images used are for illustrative purposes only and do not represent the actual size, features, specifications, fittings, and furnishings. 7. The developer reserves the right to make revisions/alterations, at its absolute discretion, without any liability whatsoever.

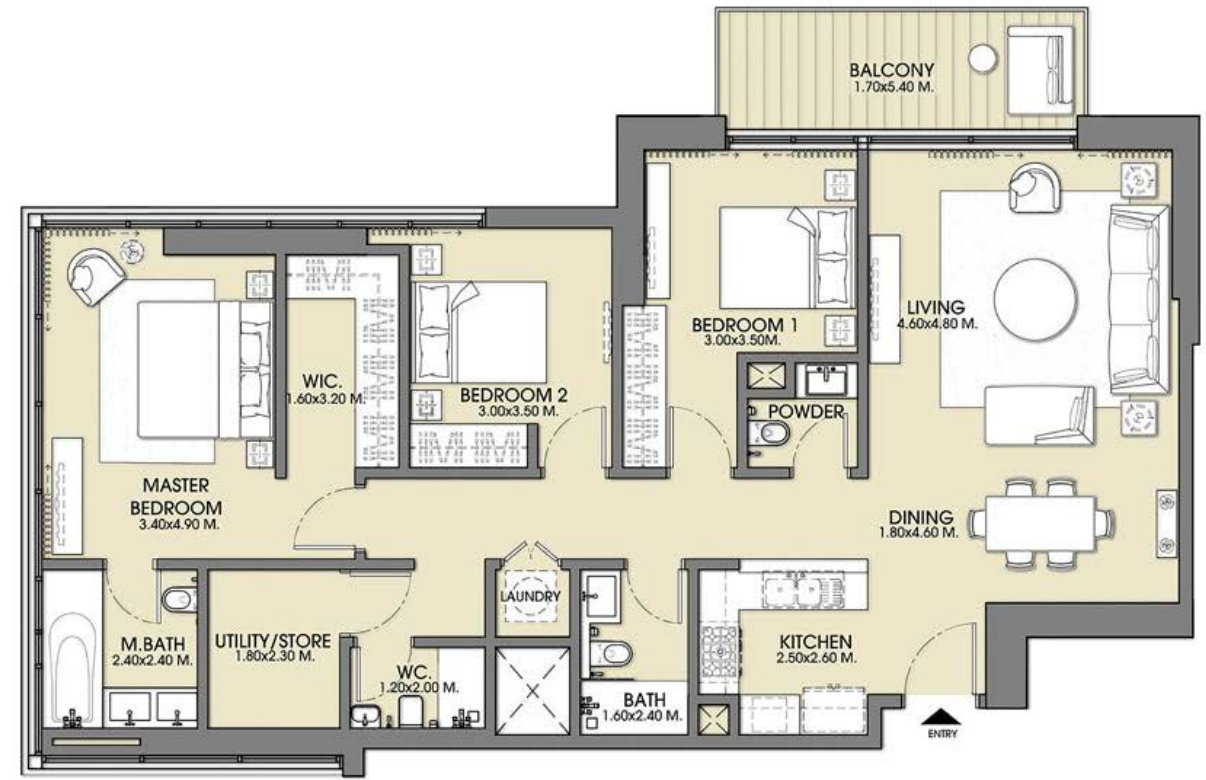


2 BEDROOM - 09A

UNIT 10

TOWER 1 - ZONE 1

LEVELS: L11-L15

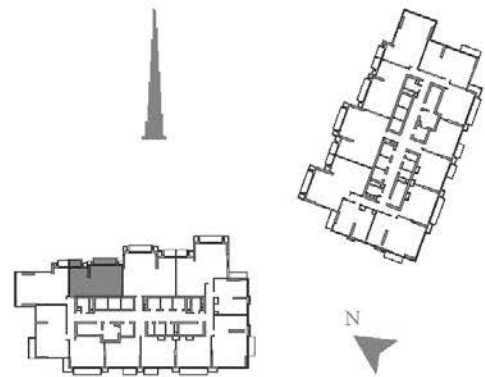


3 BEDROOM - 01

UNIT 08

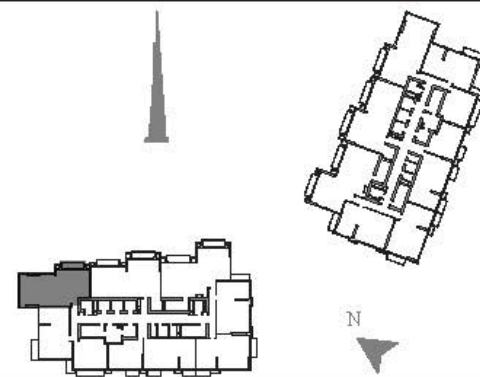
TOWER 1 - ZONE 2

LEVELS: L-18L30,L-32L44



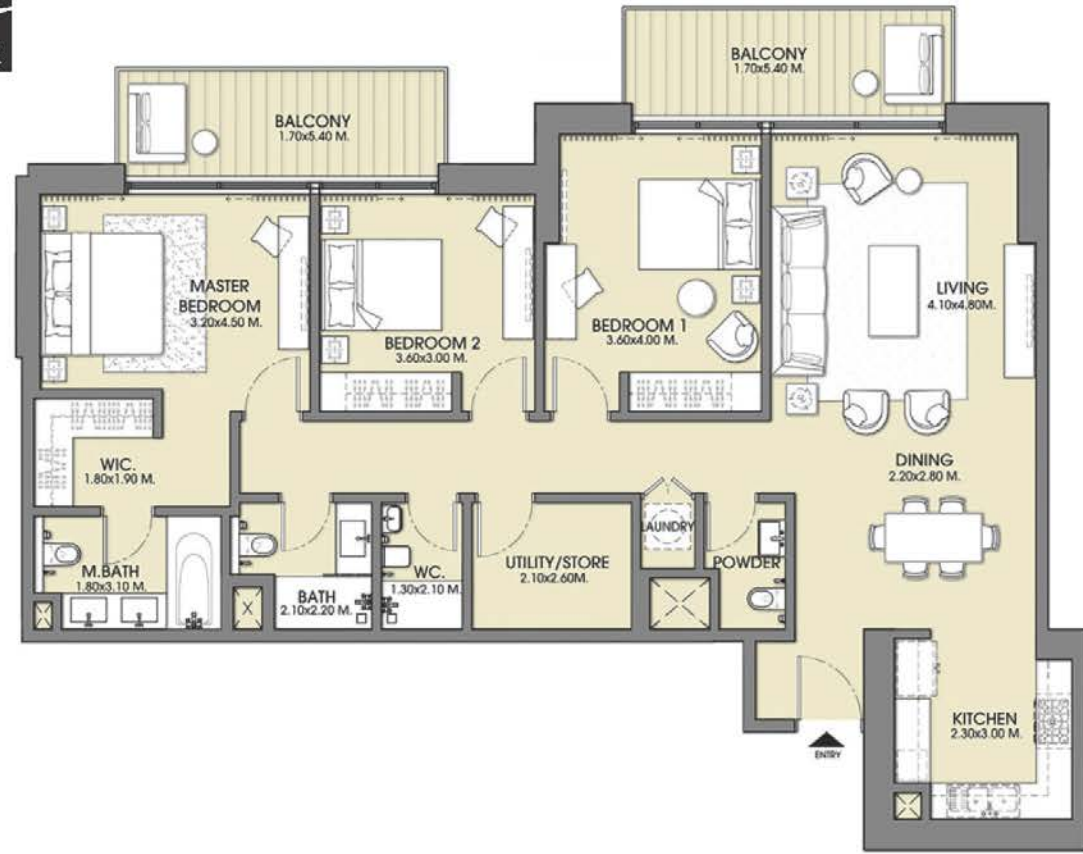
SELLABLE AREA

	sq.m	sq.ft
Suite Area	90.76	977
Balcony Area	13.48	145
Total Area	104.24	1122



SELLABLE AREA

	sq.m	sq.ft
Suite Area	130.98	1410
Balcony Area	8.99	97
Total Area	139.97	1507

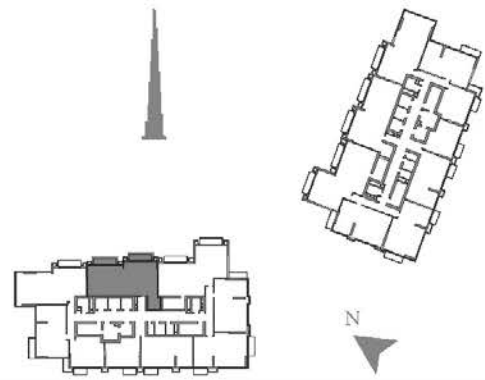


3 BEDROOM - 02B

UNIT 09

TOWER 1 - ZONE 2

LEVELS: L30,L32-L35



SELLABLE AREA

	sq.m	sq.ft
Suite Area	145.72	1569
Balcony Area	17.98	194
Total Area	163.70	1763

1. All dimensions are in imperial and metric, and measured to structural elements and exclude wall finishes and construction tolerances. 2. All materials, dimensions, and drawings are approximate only. 3. Information is subject to change without notice, at developer's absolute discretion. 4. Actual area may vary from the stated area. 5. Drawings not to scale. 6. All images used are for illustrative purposes only and do not represent the actual size, features, specifications, fittings, and furnishings. 7. The developer reserves the right to make revisions/alterations, at its absolute discretion, without any liability whatsoever.

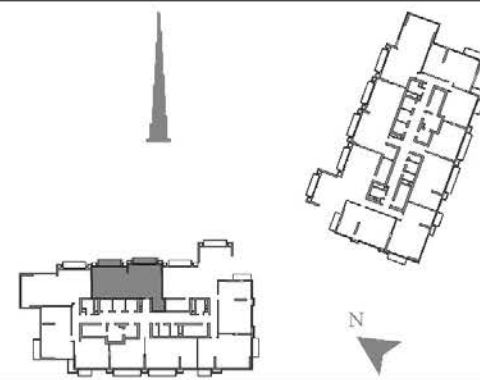


3 BEDROOM - 02C

UNIT 09

TOWER 1 - ZONE 2

LEVELS: L36-L41



SELLABLE AREA

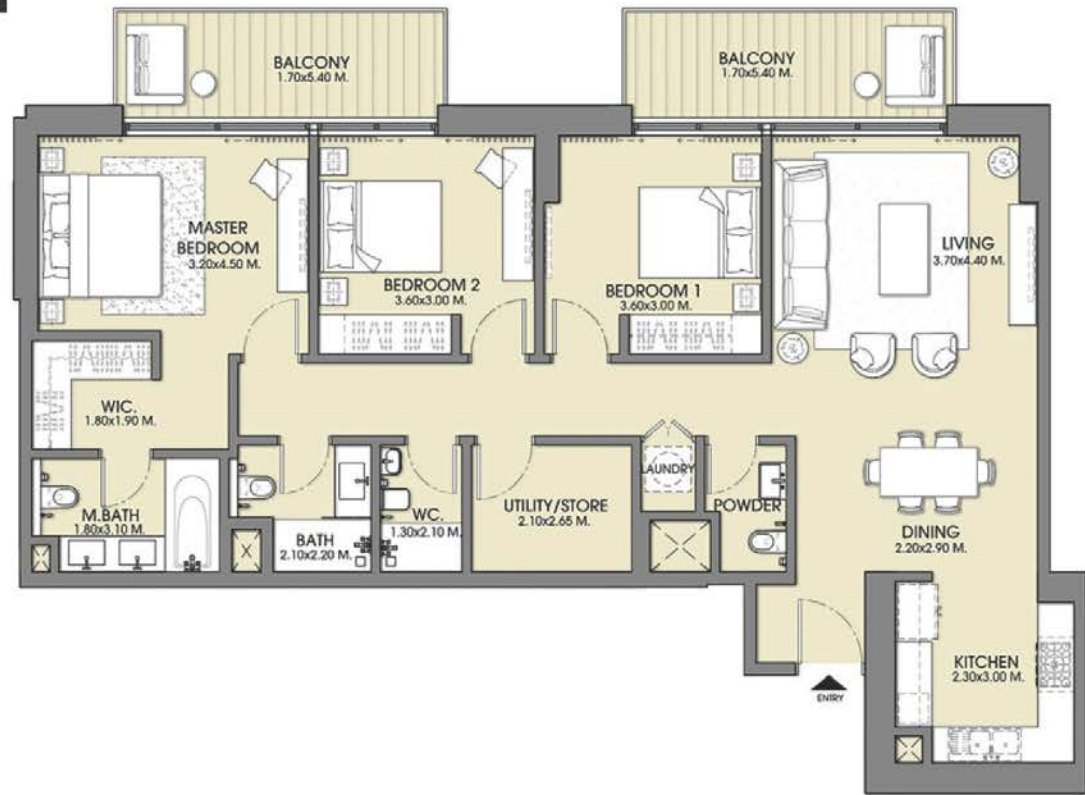
	sq.m	sq.ft
Suite Area	141.66	1525
Balcony Area	17.98	194
Total Area	159.64	1719

1. All dimensions are in imperial and metric, and measured to structural elements and exclude wall finishes and construction tolerances. 2. All materials, dimensions, and drawings are approximate only. 3. Information is subject to change without notice, at developer's absolute discretion. 4. Actual area may vary from the stated area. 5. Drawings not to scale. 6. All images used are for illustrative purposes only and do not represent the actual size, features, specifications, fittings, and furnishings. 7. The developer reserves the right to make revisions/alterations, at its absolute discretion, without any liability whatsoever.

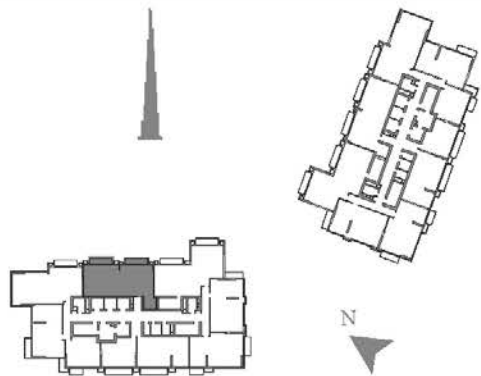


ACT | ACT  
ONE | TWO

# ACT | ACT ONE | TWO



3 BEDROOM - 02D    UNIT 09    TOWER 1 - ZONE 2    LEVELS: L42-L44



#### SELLABLE AREA

	sq.m	sq.ft
Suite Area	137.66	1482
Balcony Area	17.98	194
Total Area	155.64	1676

For more information on Act One | Act Two please call 800 36227(UAE) or +971 4 366 1688 (International).  
Visit our online sales centre at [emaar.com](http://emaar.com) or any of our sales centres.

#### DUBAI:

Emaar Sales Centre: Emaar Square, Building 3, Ground Floor, Downtown Dubai  
Dubai Hills Estate Sales Pavilion, Umm Suqeim Road  
Dubai Creek Harbour Sales Centre, Ras Al Khor

#### ABU DHABI:

Emaar Sales Centre: Al Nahda Tower, Ground Floor, 4th Street, Corniche, Al Muroor Road

Open from Saturday - Thursday, from 8.30am - 6.00pm

#### LONDON:

Harrods, 2nd Floor  
(next to Godiva Chocolate Café),  
87-135 Brompton Rd, London SW1X 7XL

Open from Monday - Saturday, from 10am - 9pm and Sunday from 11am - 6pm

للمزيد من المعلومات حول مشروع آكت ون آكت تو يرجى الاتصال بالرقم ٨٠٠٣٦٢٢٧ (في الإمارات العربية المتحدة) أو ٩٧١ ٤ ٣٦٦ ١٦٨٨ (دولي).  
أو قم بزيارة مركز مبيعاتنا الإلكتروني على الموقع [emaar.com](http://emaar.com) أو أي مركز من مراكز مبيعاتنا.

#### دبي:

مركز مبيعات إعمار: إعمار سكوير، المبنى ٣، الطابق الأرضي، وسط مدينة دبي  
بافيليون مبيعات دبي هيلز استيت: شارع أم سقيم  
مركز مبيعات إعمار خور دبي: رأس الخور

#### أبو ظبي:

مركز مبيعات إعمار: برج النهضة، الطابق الأرضي، الشارع ٤، الكورنيش، شارع المرور

من السبت إلى الخميس  
من ٨,٣٠ صباحاً حتى ٦,٠٠ مساءً

#### لندن:

هارودز، الطابق الثاني  
قرب مقهى غوديفا شوكليت كافيه،  
٧٧-١٣٥ شارع برومبتون، لندن SW1X 7XL

من الإثنين إلى السبت من ١٠,٠٠ صباحاً حتى ٩,٠٠ مساءً  
ويوم الأحد من ١١,٠٠ صباحاً حتى ٦,٠٠ مساءً

1. All dimensions are in Imperial and metric, and measured to structural elements and exclude wall finishes and construction tolerances. 2. All materials, dimensions, and drawings are approximate only. 3. Information is subject to change without notice, at developer's absolute discretion. 4. Actual area may vary from the stated area. 5. Drawings not to scale. 6. All Images used are for illustrative purposes only and do not represent the actual size, features, specifications, fittings, and furnishings. 7. The developer reserves the right to make revisions/alterations, at its absolute discretion, without any liability whatsoever.



