

Updates & Features

11322 Wooded Creek Cypress, Texas 77433

Welcoming Entry and Exterior Features:

- Covered entry with a lovely door
- Doublewide driveway for ample parking
- Outdoor flagstone patio with a storm door and pergola for outdoor enjoyment
- Large yard with mature trees
- Solar Panels to keep utility costs low

Living Space:

- Formal entryway with tall ceilings
- Charming archways throughout the home
- Cozy fireplace in the living room
- Kitchen open to the living room for easy entertaining
- Dedicated formal dining space for special occasions
- Large island kitchen with a breakfast bar
- Walk-in pantry
- Built-in desk for organization
- Ample storage space throughout the kitchen
- Breakfast nook off the kitchen for casual dining
- All bedrooms are generously sized with big windows for natural light

Primary Bedroom and Bathroom Features:

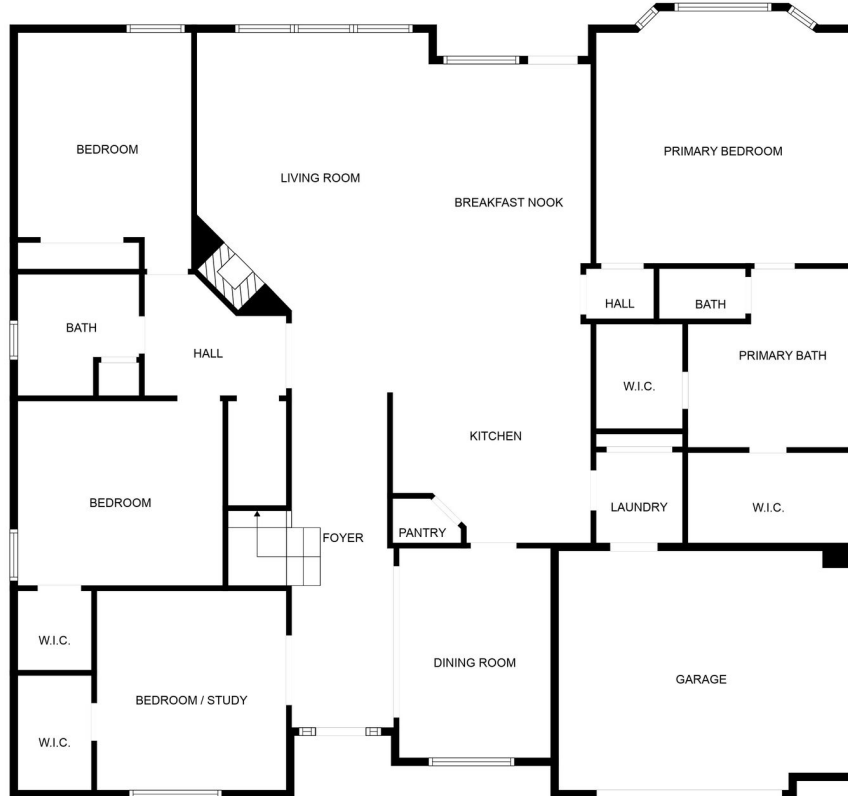
- First floor bedroom with wood floors and bay window
- Well appointed bathroom featuring dual sinks and a dedicated vanity space
- Separate shower and garden tub for relaxation
- Tall ceilings and large windows for an airy feel
- Large walk-in closet for storage convenience

Upstairs Entertainment Area:

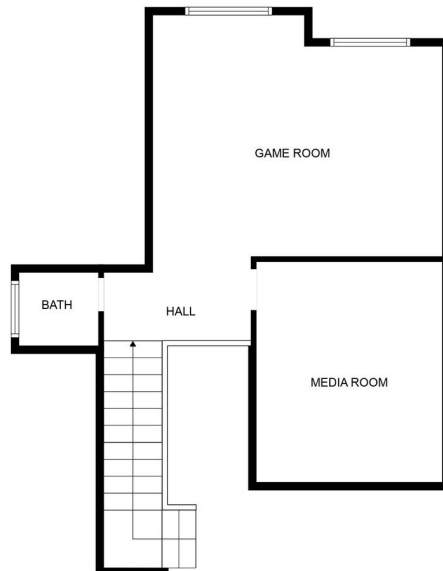
- Large gameroom with vaulted ceilings
- Separate media room for entertainment options

Floorplan

11322 Wooded Creek Cypress, Texas 77433



FLOOR 1



We've asked the sellers a few questions to get to know their community...

11322 Wooded Creek Cypress, Texas 77433

How would you describe the area, and what it's like living here?

This is such a lovely community! It's beautiful and all the neighbors are very friendly and helpful! There is a community pool, splash pad, pool and clubhouse for residents! There is very active Facebook page and neighbors post updates and helpful resources.

What has been your favorite thing about living in this community?

Convenience to excellent schools, great restaurants and community events. It's really easy to get on 290 and get anywhere! Plus there's everything you need just down the street! We have always felt safe and there are many people out walking the lake. The kids play in the cul-de-sacs!

What are your favorite places to eat, shop, visit in the neighborhood?

Towne Lake is great area for restaurants and shopping. They also have events and concerts out on the green space plus a farmer's market every 3rd Saturday from 10:30-1:30pm. There are many parks in the area as well. Kroger, HEB, Target and Costco are very close.

Some favorites are Chick Fil A, Local Table, Ambrizas, Vodoo Donuts, Starbucks, L3 Craft Coffee and Sam's Boat!

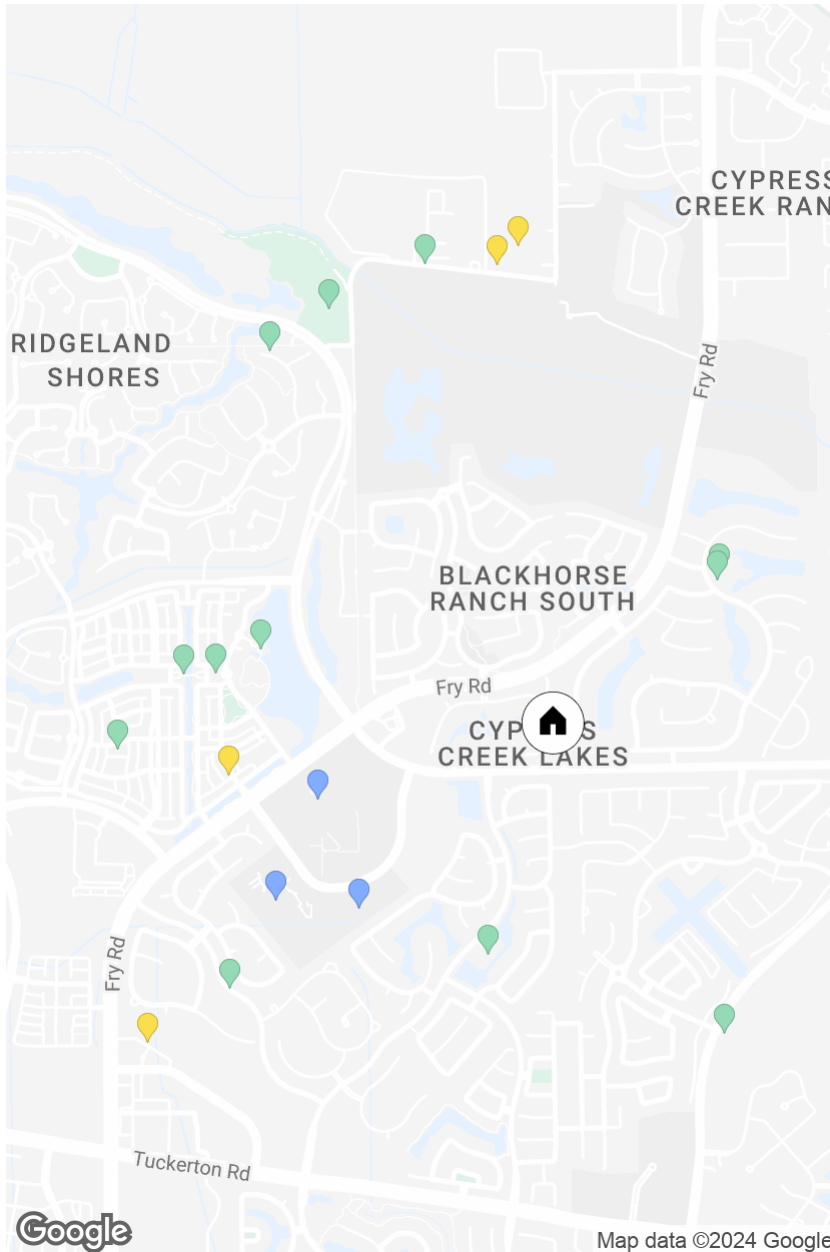
What else can you share with future buyers?

Overall this is such a great community and we've had many wonderful memories in this home! It's really easy to get on the 290 and get anywhere!

11322 Wooded Creek Lane

Cypress Creek Lakes

3 BD 3 BA 3066 SF



SCHOOLS

- Cypress Ranch High School, 0.64mi
- Warner Elementary School, 0.69mi
- Smith Middle School, 0.85mi

PARKS

- Park & Splash Pad, 0.56mi
- Cypress Creek Lakes Phase 1 Recreation Center, Park and Splash Pad, 0.57mi
- Cypress Creek Lakes Park, 0.62mi
- Dragon Park, 0.77mi
- Central Park, 0.88mi
- Towne Lake Memorial Park, 0.91mi
- Lakeland Heights - Pedestrian Bridge,

0.96mi

- Cypress Creek Lakes Phase Three Recreation Center #2, 1.08mi
- Towne Square Park, 1.12mi
- Turtle Lane Park, 1.20mi
- Oak Meadow Park (Private), 1.21mi
- HC MUD 418 WP 1, 1.22mi

GYMS

- Pure Barre, 0.84mi
- Premier Pilates, 1.19mi
- Houston Prime Athletics - Former Willowbrook Volleyball, 1.23mi
- Life Time, 1.32mi



Map data ©2024 Google

Compass is a licensed real estate broker. All material is intended for informational purposes only and is compiled from sources deemed reliable but is subject to errors, omissions, changes in price, condition, sale, or withdrawal without notice. No statement is made as to the accuracy of any description or measurements (including square footage). This is not intended to solicit property already listed. No financial or legal advice provided. Equal Housing Opportunity. Photos may be virtually staged or digitally enhanced and may not reflect actual property conditions.

