

# Starling - 26323 Aurora Sky

2,391 SQ.FT | 4 BEDROOM | 3 BATH | 2 BAY GARAGE



EXTERIOR STYLE E



~~EXTERIOR STYLE F~~



~~EXTERIOR STYLE S~~

Life-Changing By Design

TriPointeHomes.com/Houston  
L303

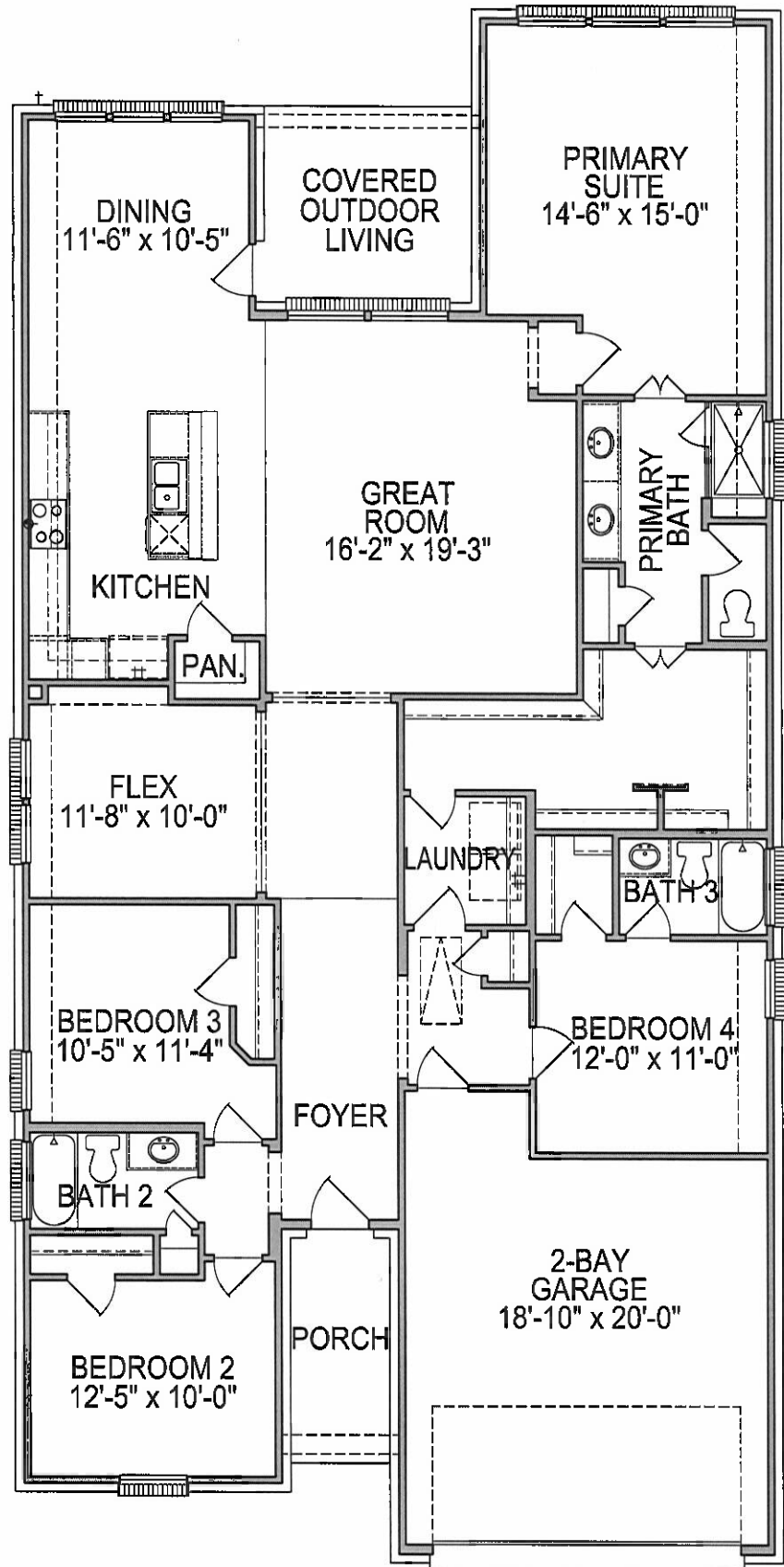
The prices of our homes, included features, plans, specifications, promotions/incentives, neighborhood build-out and available locations are subject to change without notice. Stated dimensions, square footage and acreage are approximate and should not be used as a representation of any home's or homesite's precise or actual size, location or orientation. There is no guarantee that any particular homesite or home will be available. No information or material herein is to be construed to be an offer or solicitation for sale. A Broker/Agent must register their client in person on client's first visit at each community for a Broker/Agent to receive a commission or referral fee, if available. Not all features and options are available in all homes. Unless otherwise expressly stated, homes do not come with hardscape, landscape, or other decorator items. Any photographs or renderings used herein reflect artists' conceptions and are for illustrative purposes only. Community maps, illustrations, plans and/or amenities reflect our current vision and are subject to change without notice. Maps not to scale. Photographs or renderings of people do not depict or indicate any preference regarding race, religion, gender, sexual orientation, disability, familial status, or national origin. Some amenities may not yet be constructed. Builder reserves the right to change the size, design, configuration and location of amenities not yet constructed and does not warrant the suitability thereof for any use or for any person. There is no guarantee that any particular homesite, home or common area will offer a view or that any particular view will be preserved. Views may also be altered by subsequent development, construction, and landscaping growth. A link to a third party website does not imply endorsement of that site nor any ability to control that site's privacy practices. Marketing promotions/incentives, if any, are subject to conditions or restrictions and are subject to change without notice. No warranty or guarantee is made regarding any particular area public school/school district or that any particular public school/school district will service any given community. Schools/school districts may change over time. Builder does not warrant the suitability of any trail for any use or for any person. Our name and the logos contained herein are registered trademarks of Tri Pointe Homes, Inc. and/or its subsidiaries. © 2021 Tri Pointe Homes, Inc. All rights reserved. For State Licensing and Notices, see <https://www.tripointehomes.com/statelicensenotices>.

LAST REVISED 09/05/23



# Starling

2,391 SQ.FT | 4 BEDROOM | 3 BATH | 2 BAY GARAGE



FIRST FLOOR PLAN

Life-Changing By Design

TriPointeHomes.com/Houston  
L303

The prices of our homes, included features, plans, specifications, promotions/incentives, neighborhood build-out and available locations are subject to change without notice. Stated dimensions, square footage and acreage are approximate and should not be used as a representation of any home's or homesite's precise or actual size, location or orientation. There is no guarantee that any particular homesite or home will be available. No information or material herein is to be construed to be an offer or solicitation for sale. A Broker/Agent must register their client in person on client's first visit at each community for a Broker/Agent to receive a commission or referral fee, if available. Not all features and options are available in all homes. Unless otherwise expressly stated, homes do not come with hardscape, landscape, or other decorator items. Any photographs or renderings used herein reflect artists' conceptions and are for illustrative purposes only. Community maps, illustrations, plans and/or amenities reflect our current vision and are subject to change without notice. Maps not to scale. Photographs or renderings of people do not depict or indicate any preference regarding race, religion, gender, sexual orientation, disability, familial status, or national origin. Some amenities may not yet be constructed. Builder reserves the right to change the size, design, configuration and location of amenities not yet constructed and does not warrant the suitability thereof for any use or for any person. There is no guarantee that any particular homesite, home or common area will offer a view or that any particular view will be preserved. Views may also be altered by subsequent development, construction, and landscaping growth. A link to a third party website does not imply endorsement of that site nor any ability to control that site's privacy practices. Marketing promotions/incentives, if any, are subject to conditions or restrictions and are subject to change without notice. No warranty or guarantee is made regarding any particular area public school/school district or that any particular public school/school district will service any given community. Schools/school districts may change over time. Builder does not warrant the suitability of any trail for any use or for any person. Our name and the logos contained herein are registered trademarks of Tri Pointe Homes, Inc. and/or its subsidiaries. © 2021 Tri Pointe Homes, Inc. All rights reserved. For State Licensing and Notices, see <https://www.tripointehomes.com/statelicensos-notices>.

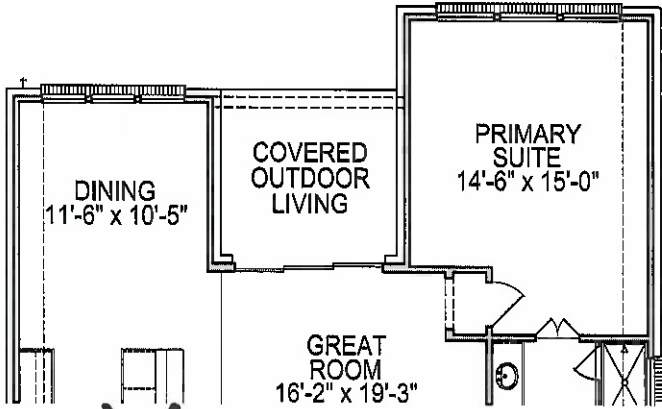
LAST REVISED 09/05/23



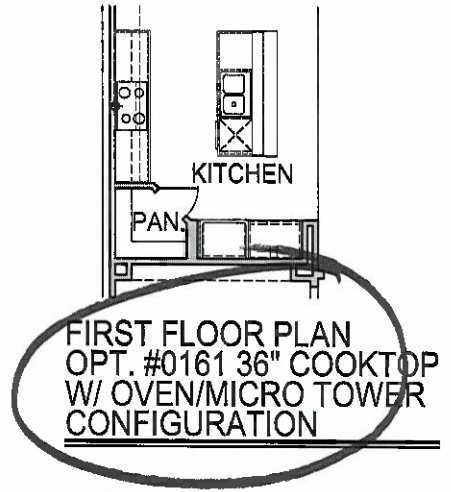
# Starling

2,391 SQ.FT | 4 BEDROOM | 3 BATH | 2 BAY GARAGE

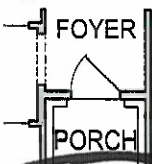
## Plan Options



~~FIRST FLOOR PLAN  
OPT. #0190  
SLIDERS @ GREAT ROOM~~



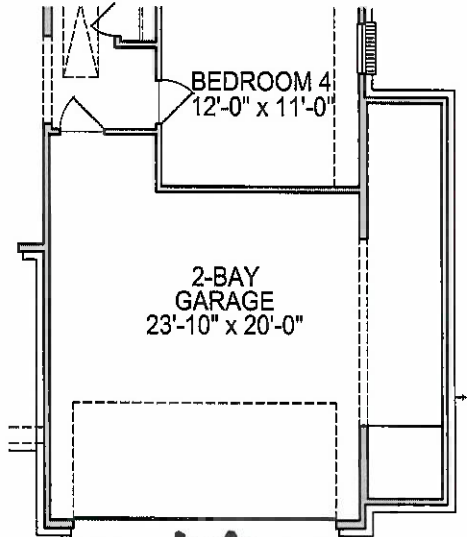
FIRST FLOOR PLAN  
OPT. #0161 36" COOKTOP  
W/ OVEN/MICRO TOWER  
CONFIGURATION



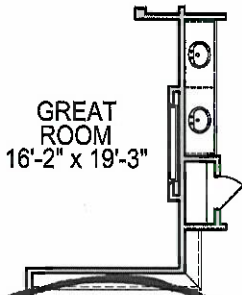
FIRST FLOOR PLAN  
OPT. #D002  
80 ENTRY DOOR



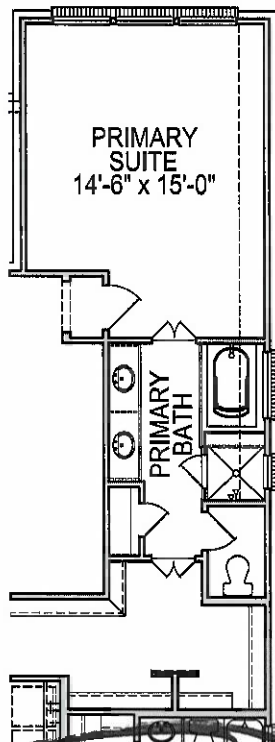
FIRST FLOOR PLAN  
OPT. #D003  
80 BACK DOOR



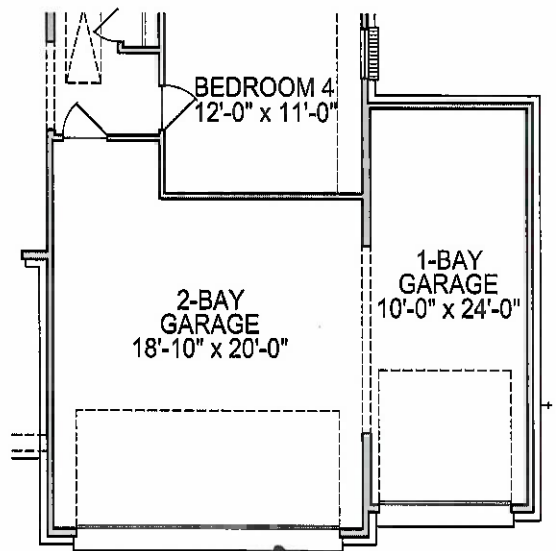
~~FIRST FLOOR PLAN  
OPT. #0613 5' GARAGE EXT.~~



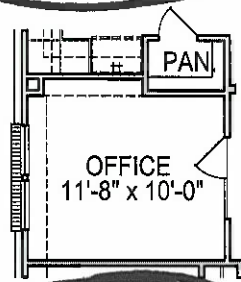
FIRST FLOOR PLAN  
OPT. #0160  
ELECTRIC FIREPLACE



FIRST FLOOR PLAN  
OPT. #0071  
LUXURY PRIMARY BATH



~~FIRST FLOOR PLAN  
OPT. #0593 1-BAY GARAGE~~



FIRST FLOOR PLAN  
OPT. #0569 OFFICE  
FROM FLEX

