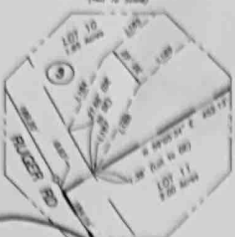
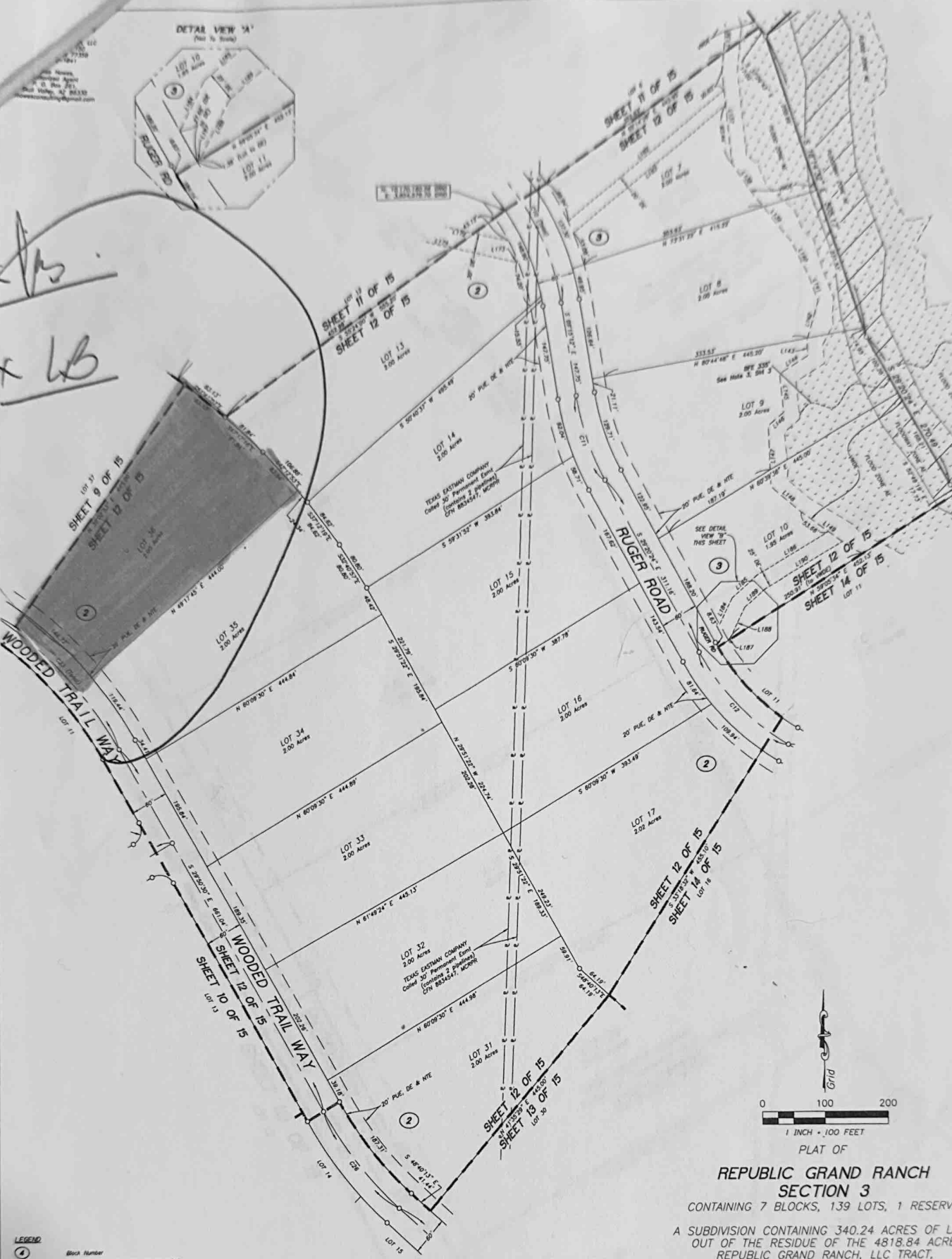




DETAIL VIEW 'A'
(Not to Scale)



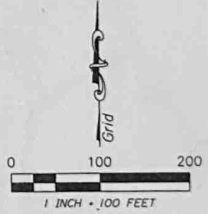
Handwritten notes: "r/s" and "r LB" with arrows pointing to specific areas on the plat.



- LEGEND**
- ① Block Number
 - Found Iron Pipe, size and cap as noted
 - Found Iron Rod, size and cap as noted
 - Found 1/2" 5/8" Iron Rod with 1-3/4" blue plastic cap rod
 - MICHAEL A. HANSEN RPLS 65537, UNLESS otherwise noted
 - ▨ Floodway Area in Zone AE
 - ▨ Flood Zone AE
 - CFN Clerk's File Number
 - P.U.E., DE & NTE Public Utility Easement, Drainage Easement & Nature Trail Easement
 - MCGR Montgomery County Deed Records
 - MCGRP Montgomery County Official Public Records
 - MCGRS Montgomery County Road Property Records
 - MCGR Montgomery County Plat Records
 - VAGE Variable Width Flexible Drainage Easement
 - VB Vegetative Buffer

INDIVIDUAL SHEETS INDEX

1	Vicinity Map and Sheet Number Layout	9	Blocks 2 and 4
2	Certifications and Dedications	10	Blocks 4 and 5
3	Notes, Line and Curve Tables	11	Blocks 2 and 3
4	Block 1	12	Blocks 2, 3 and Detail View 'B'
5	Blocks 1 and 4	13	Blocks 2 and 5
6	Blocks 1, 4 and 5	14	Blocks 2, 3 and 6
7	Blocks 1, 5, 7 and Detail View 'A'	15	Block 3
8	Blocks 2 and 3		



PLAT OF
REPUBLIC GRAND RANCH
SECTION 3
CONTAINING 7 BLOCKS, 139 LOTS, 1 RESERVE

A SUBDIVISION CONTAINING 340.24 ACRES OF LAND,
OUT OF THE RESIDUE OF THE 4818.84 ACRE
REPUBLIC GRAND RANCH, LLC TRACT,
CLERK'S FILE No. 2019113827, MONTGOMERY
COUNTY OFFICIAL PUBLIC RECORDS
JOSE MARIA DE LA GARZA GRANT, A-15
MONTGOMERY COUNTY, TEXAS

MARCH 2021
Norman, Inc.
P.O. Box 1158, New Waverly, TX 77358
TABLES & FORM NO. 103-0400-03
936-661-3325

Job No. 20-094

SHEET 12 OF 15