

SITE UTILITY PLAN 1 in = 20 ft

1st Floor Living Area 1948 sf  
 2nd AC Living Area 635 sf  
 Total AC Area 2583 sf  
 EACH UNIT = 1300SF  
 Total Slab Area 2533 SF



**JBA Homes**  
 Proposed Duplexes  
 7728 Friar Point Drive Port  
 Arthur, TX 77642

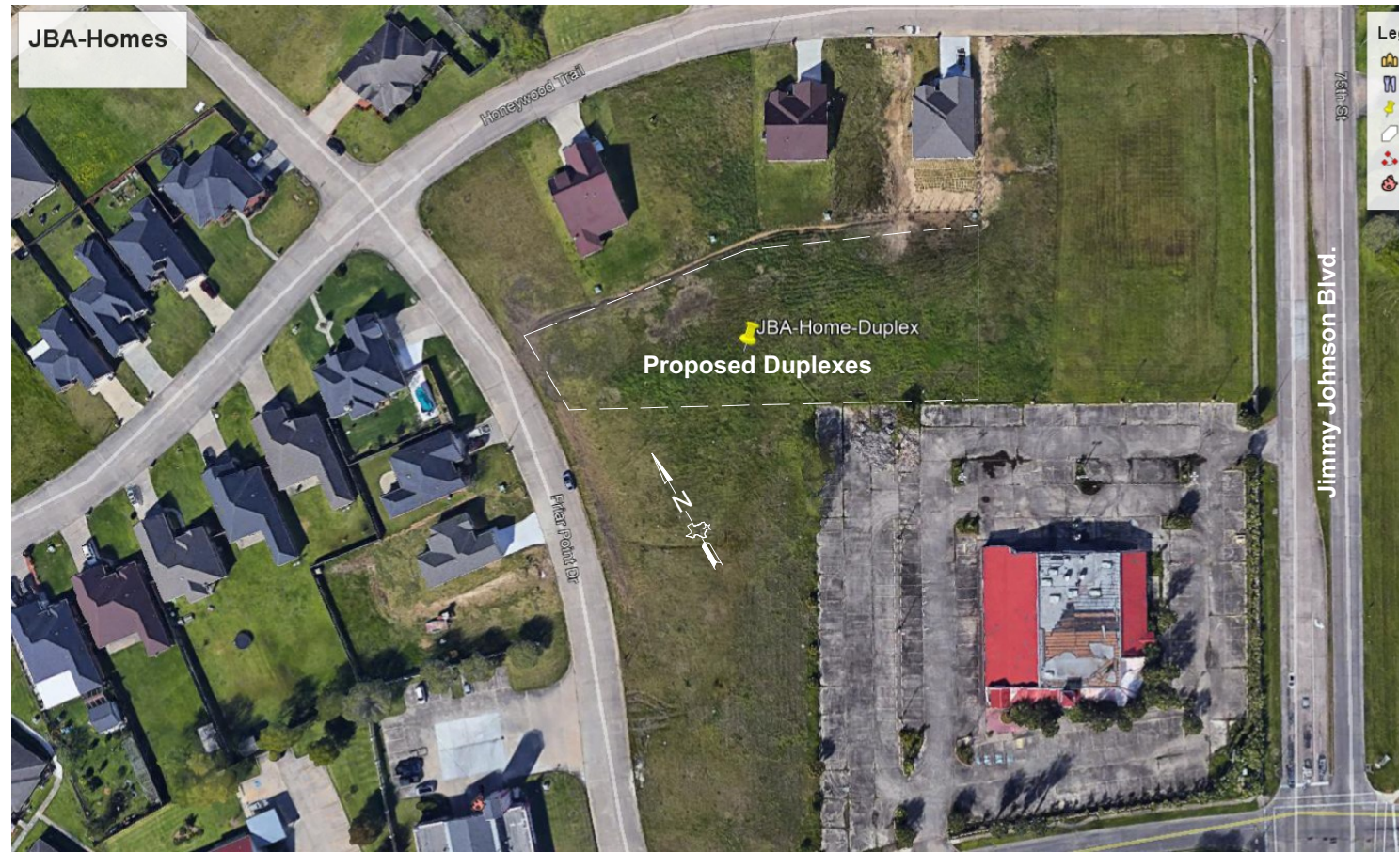


Revised:  
 12/02/20  
 04/05/21 301e  
 05/02/21  
 05/14/21  
 06/20/21  
 08-21-23

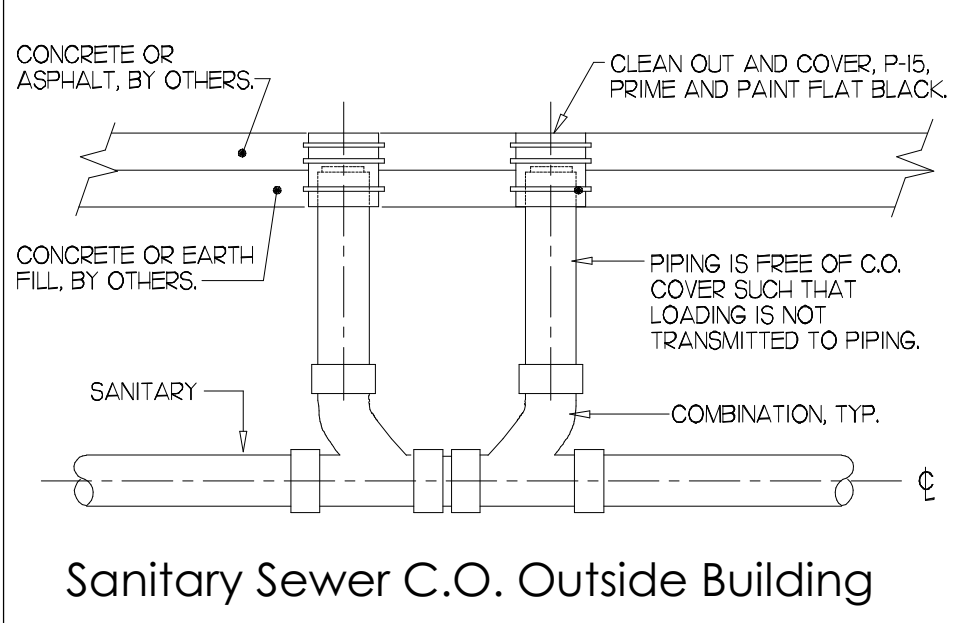
Site Utility Plan

Scale: As Shown SHEET

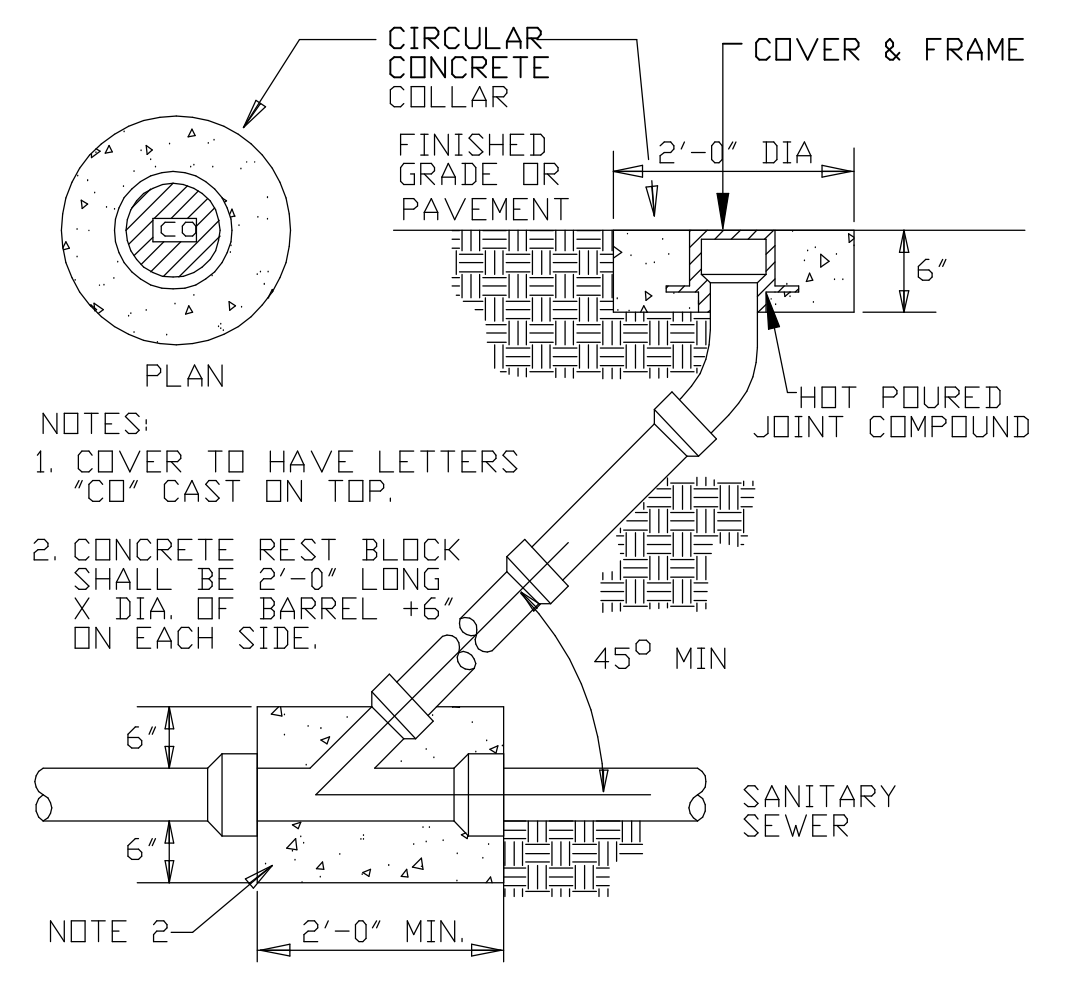
C-2



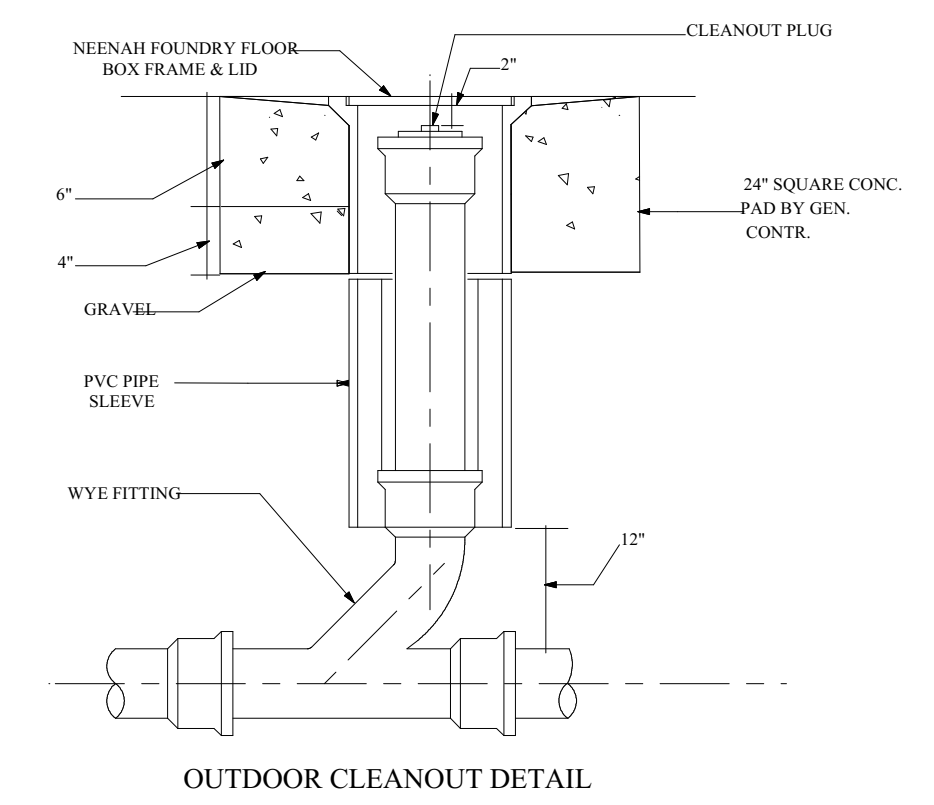
Vicinity Map



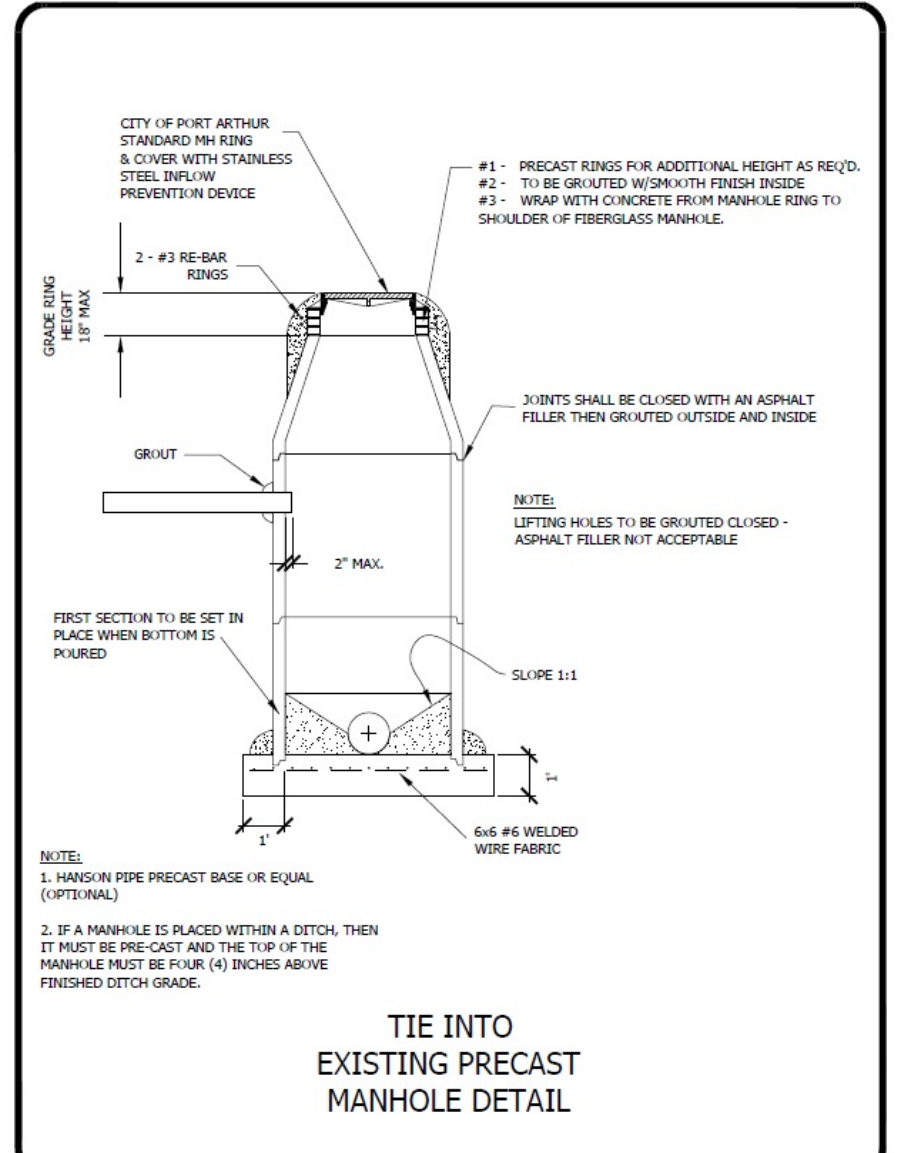
Sanitary Sewer C.O. Outside Building



Typical Sewer Clean Out  
 NOT TO SCALE



OUTDOOR CLEANOUT DETAIL



TIE INTO EXISTING PRECAST MANHOLE DETAIL

NOTE: