

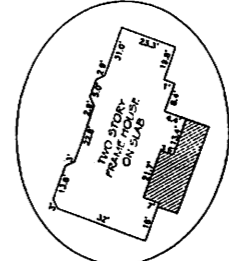
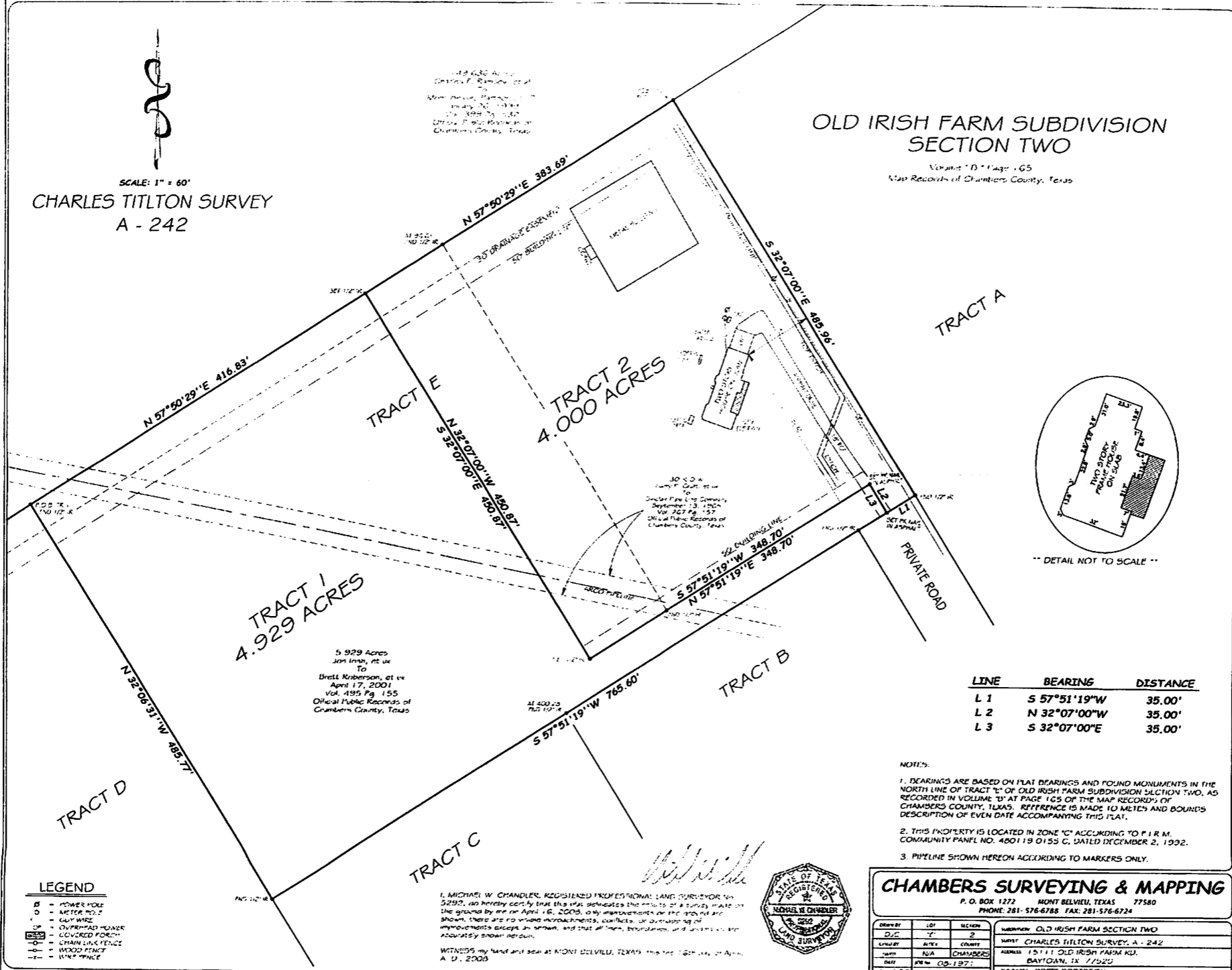


SCALE: 1" = 60'
CHARLES TILTON SURVEY
 A - 242

189 630 ACRES
 Charles F. Remick, et al
 More or Less
 Survey No. 1188
 Vol. 189 Pg. 187
 Official Public Records of
 Chambers County, Texas

OLD IRISH FARM SUBDIVISION
SECTION TWO

Volume 181 Page 165
 Map Records of Chambers County, Texas



LINE	BEARING	DISTANCE
L 1	S 57°51'19\"W	35.00'
L 2	N 32°07'00\"W	35.00'
L 3	S 32°07'00\"E	35.00'

- NOTES:
1. BEARINGS ARE BASED ON PLAT BEARINGS AND FOUND MONUMENTS IN THE NORTH LINE OF TRACT 1 OF OLD IRISH FARM SUBDIVISION SECTION TWO, AS RECORDED IN VOLUME 181 OF THE MAP RECORDS OF CHAMBERS COUNTY, TEXAS. REFERENCE IS MADE TO METES AND BOUNDS DESCRIPTION OF EVEN DATE ACCOMPANYING THIS PLAT.
 2. THIS PROPERTY IS LOCATED IN ZONE 10C ACCORDING TO P. I. R. M. COMMUNITY PANEL NO. 480119 0155 C, DATED DECEMBER 2, 1992.
 3. PIPELINE SHOWN HEREON ACCORDING TO MARKERS ONLY.

- LEGEND**
- ⊖ = POWER HOLE
 - = WATER HOLE
 - ⊙ = GUY WIRE
 - ⊕ = CHIMNEY MONUMENT
 - ⊖ = COVERED FORTH
 - = CHAIN LINK FENCE
 - X— = WOOD FENCE
 - X— = WIRE FENCE

I, MICHAEL W. CHANDLER, REGISTERED PROFESSIONAL LAND SURVEYOR NO. 5293, do hereby certify that this plat reflects the results of a survey made on the ground by me on April 16, 2008. Only improvements on the ground are shown. There are no visible encroachments, conflicts, or outstanding oil or mineral interests except as shown, and that all lines, boundaries, and monuments are accurately shown hereon.

WITNESS my hand and seal at MONT BELVUE, TEXAS this 16th day of April, A. D., 2008



CHAMBERS SURVEYING & MAPPING
 P. O. BOX 1272 MONT BELVUE, TEXAS 77580
 PHONE: 281-576-6788 FAX: 281-576-6724

DRAWN BY	LOT	SECTION	SUBDIVISION
DJC	1	2	OLD IRISH FARM SECTION TWO
LINCOLN	ALTA	COUNTY	CHAMBERS
DATE	10-19-07		
BY			

TRACT 1
STATE OF TEXAS)
COUNTY OF CHAMBERS)

FIELD NOTES of a 4.929 acre tract of land situated in the Charles Tilton Survey, Abstract Number 242, Chambers County, Texas, being out of and a part of Tract "E" of Old Irish Farm Subdivision Section Two recorded in Volume " B " at Page 165 of the Map Records of Chambers County, Texas, and 5.929 acres conveyed to Brett Roberson, et ux by Jon Irish, et ux in deed dated April 17, 2001, and recorded in Volume 495 at Page 155 of the Official Public Records of Chambers County, Texas. This 4.929 acre tract of land is more particularly described by metes and bounds as follows, to-wit:

NOTE: BEARINGS ARE BASED ON PLAT BEARINGS AND FOUND MONUMENTS IN THE NORTH LINE OF SAID TRACT "E". REFERENCE IS MADE TO PLAT OF EVEN DATE ACCOMPANYING THIS METES AND BOUNDS DESCRIPTION.

BEGINNING at a ½ inch iron rod found for the Northwest corner of this tract of land, the Northwest corner of said Tract "E", the Northwest corner of said 5.929 acres, and the Northeast corner of Tract "D" of said subdivision, in the South line of a 149.636 acre tract of land conveyed to Mont Belvieu Partners, L. P., by Charles F. Ramsey, et al, in deed dated January 26, 1999, and recorded in Volume 399 at Page 532 of the Official Public Records of Chambers County, Texas.

THENCE North 57°50'29" East with the North line of this tract of land, the North line of said Tract "E", the North line of said 5.929 acres, and the South line of said 149.636 acres a distance of 416.83 feet to a ½ inch iron rod set for the Northeast corner of this tract of land, and the Northwest corner of a 4.000 acre tract of land called Tract 2, surveyed this date. From this corner a ½ inch iron rod found for the Northeast corner of said 5.929 acres, and the Northwest corner of 3.000 acres conveyed to Brett Roberson, et ux by Jon Irish, et ux in deed dated April 17, 2001, and recorded in Volume 495 at Page 150 of the Official Public Records of Chambers County, Texas bears North 57°50'29" East a distance of 96.61 feet.

THENCE South 32°07'00" East with the East line of this tract of land, and West line of said 4.000 acres a distance of 450.87 feet to a ½ inch iron rod set for an interior corner of this tract of land, and the Southwest corner of said 4.000 acres.

THENCE North 57°51'19" East with the most Southerly North line of this tract of land, the South line of said 4.000 acres, and the South line of said 3.000 acres, over and across said 5.929 acres at a distance of 96.61 found a ½ inch iron rod on line, continuing for a total distance of 348.70 feet to a nail set in asphalt for the most Southerly Northeast corner of this tract of land, the most Southerly Northeast corner of said 5.929 acres, an interior corner of said 4.000 acres and said 3.000 acres.

FIELD NOTES - TRACT 1 (4.929 ACRES)

THENCE South 32°07'00" East with an East line of this tract of land, an East line of said 5.929 acres, a West line of said 4.000 acres and said 3.000 acres a distance of 35.00 feet to a nail set in asphalt for the Southeast corner of this tract of land, the Southeast corner of said 5.929 acres, the most Southerly Southwest corner of said 4.000 acres and said 3.000 acres, in the South line of said Tract "E", and the North line of a Private Road. From this corner a ½ inch iron rod found for the Southeast corner of said Tract "E", the Southeast corner of said 4.000 acres, and said 3.000 acres, and the Northeast corner of said Private Road, in the West line of Tract "A" of Old Irish Farms Subdivision Section Two bears North 57°51'19" East a distance of 35.00 feet.

THENCE South 57°51'19" West with the South line of this tract of land, the South line of said 5.929 acres, the South line of said Tract "E", the North line of said Private Road, and the North line Tracts "B" and "C" of Old Irish Farms Subdivision Section Two, at a distance of 35.00 feet found a ½ inch iron rod on line for the Northwest corner of said Private Road, and the Northeast corner of said Tract "B", at a distance of 400.28 feet found a ½ inch iron rod for the Northwest corner of said Tract "B", and the Northeast corner of said Tract "C", in all a total distance of 765.60 feet to a ½ inch iron rod found for the Southwest corner of this tract of land, the Southwest corner of said 5.929 acres, the Southwest corner of said Tract "E", and the Northwest corner of said Tract "C", in the East line of said Tract "D".

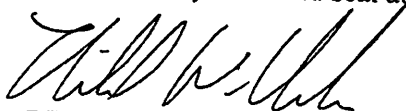
THENCE North 32°06'31" West with the West line of this tract of land, the West line of said 5.929 acres, the West line of said Tract "E", and the East line of said Tract "D" a distance of 485.77 feet to the PLACE OF BEGINNING, containing within said boundaries 4.929 acres of land, more or less.

SURVEYED: April 16, 2008.

SURVEYOR'S CERTIFICATE

I, Michael W. Chandler, Registered Professional Land Surveyor Number 5292 do hereby certify that the foregoing field notes were prepared from an actual survey made on the ground by me on the date shown, and that all lines, boundaries and landmarks are accurately described therein.

WITNESS my hand and seal at Mont Belvieu, Texas, this the 16th day of April, A.D., 2008.


REG. PROFESSIONAL LAND SURVEYOR
NO. 5292
08-1971.fdn



TRACT 2
STATE OF TEXAS)
COUNTY OF CHAMBERS)

FIELD NOTES of a 4.000 acre tract of land situated in the Charles Tilton Survey, Abstract Number 242, Chambers County, Texas, being out of and a part of Tract "E" of Old Irish Farm Subdivision Section Two recorded in Volume " B " at Page 165 of the Map Records of Chambers County, Texas, a 3.000 acre tract and 5.929 acre tract conveyed to Brett Roberson, et ux by Jon Irish, et ux in deed dated April 17, 2001, and recorded in Volume 495 at Pages 150 & 155 of the Official Public Records of Chambers County, Texas . This 4.000 acre tract of land is more particularly described by metes and bounds as follows, to-wit:

NOTE: BEARINGS ARE BASED ON PLAT BEARINGS AND FOUND MONUMENTS IN THE NORTH LINE OF SAID TRACT "E". REFERENCE IS MADE TO PLAT OF EVEN DATE ACCOMPANYING THIS METES AND BOUNDS DESCRIPTION.

BEGINNING at a ½ inch iron rod found for the Northeast corner of this tract of land, the Northeast corner of said 3.000 acres, the Northeast corner of said Tract "E", and the Northwest corner of Tract "A" of said subdivision, in the South line of a 149.636 acre tract of land conveyed to Mont Belvieu Partners, L. P., by Charles F. Ramsey, et al, by deed dated January 26, 1999, and recorded in Volume 399 at Page 532 of the Official Public Records of Chambers County, Texas.

THENCE South 32°07'00" East with the East line of this tract of land, the East line of said 3.000 acres, the East line of said Tract "E", and the West line of said Tract "A" a distance of 485.96 feet to a ½ inch iron rod found for the Southeast corner of this tract of land, the Southeast corner of said 3.000 acres, the Southeast corner of said Tract "E", and the Northeast corner of a Private Road, 70 foot wide.

THENCE South 57°51'19" West with the South line of this tract of land, the South line of said 3.000 acres, the South line of said Tract "E", and the North line of said Private Road a distance of 35.00 feet to a nail set in asphalt for the most Southerly Southwest corner of this tract of land, the most Southerly Southwest corner of said 3.000 acres, the Southeast corner of said 5.929 acres, and the Southeast corner of a 4.929 acre tract of land called Tract 1, surveyed this date.

THENCE North 32°07'00" West with a West line of this tract of land, a West line of said 3.000 acres, an East line of said 5.929 acres and said 4.929 acres a distance of 35.00 feet to a nail set in asphalt for an interior corner of this tract of land, an interior corner of said 3.000 acres, a Northeast corner of said 5.929 acres and said 4.929 acres.

FIELD NOTES - TRACT 2 (4.000 ACRES)

THENCE South 57°51'19" West with the most Northerly South line of this tract of land, the most Northerly South line of said 3.000 acres, a North line of said 5.929 acres and said 4.929 acres, at a distance of 259.09 feet found a ½ inch iron rod on line for the Southwest corner of said 3.000 acres and an interior corner of said 5.929 acres, continuing for a total distance of 348.70 feet to a ½ inch iron rod set for the most Northerly Southwest corner of this tract of land, and an interior corner of said 4.929 acres.

THENCE North 32°07'00" West with the West line of this tract of land, and the East line of said 4.929 acres, over and across said Tract "E" a distance of 450.87 feet to a ½ inch iron rod set for the Northwest corner of this tract of land, and the Northeast corner of said 4.929 acres, in the North line of said Tract "E", and the South line of said 149.636 acres.

THENCE North 57°50'29" East with the North line of this tract of land, the North line of said Tract "E", the North line of said 3.000 acres, and the South line of said 149.636 acres at a distance of 96.61 feet found a ½ inch iron rod on line for the Northeast corner of said 5.929 acres and the Northwest corner of said 3.000 acres, continuing for a total distance of 383.69 feet to the PLACE OF BEGINNING, containing within said boundaries 4.000 acres of land, more or less.

SURVEYED: April 16, 2008.

SURVEYOR'S CERTIFICATE

I, Michael W. Chandler, Registered Professional Land Surveyor Number 5292 do hereby certify that the foregoing field notes were prepared from an actual survey made on the ground by me on the date shown, and that all lines, boundaries and landmarks are accurately described therein.

WITNESS my hand and seal at Mont Belvieu, Texas, this the 16th day of April, A.D., 2008.



REG. PROFESSIONAL LAND SURVEYOR
NO. 5292
08-1971.fdn

