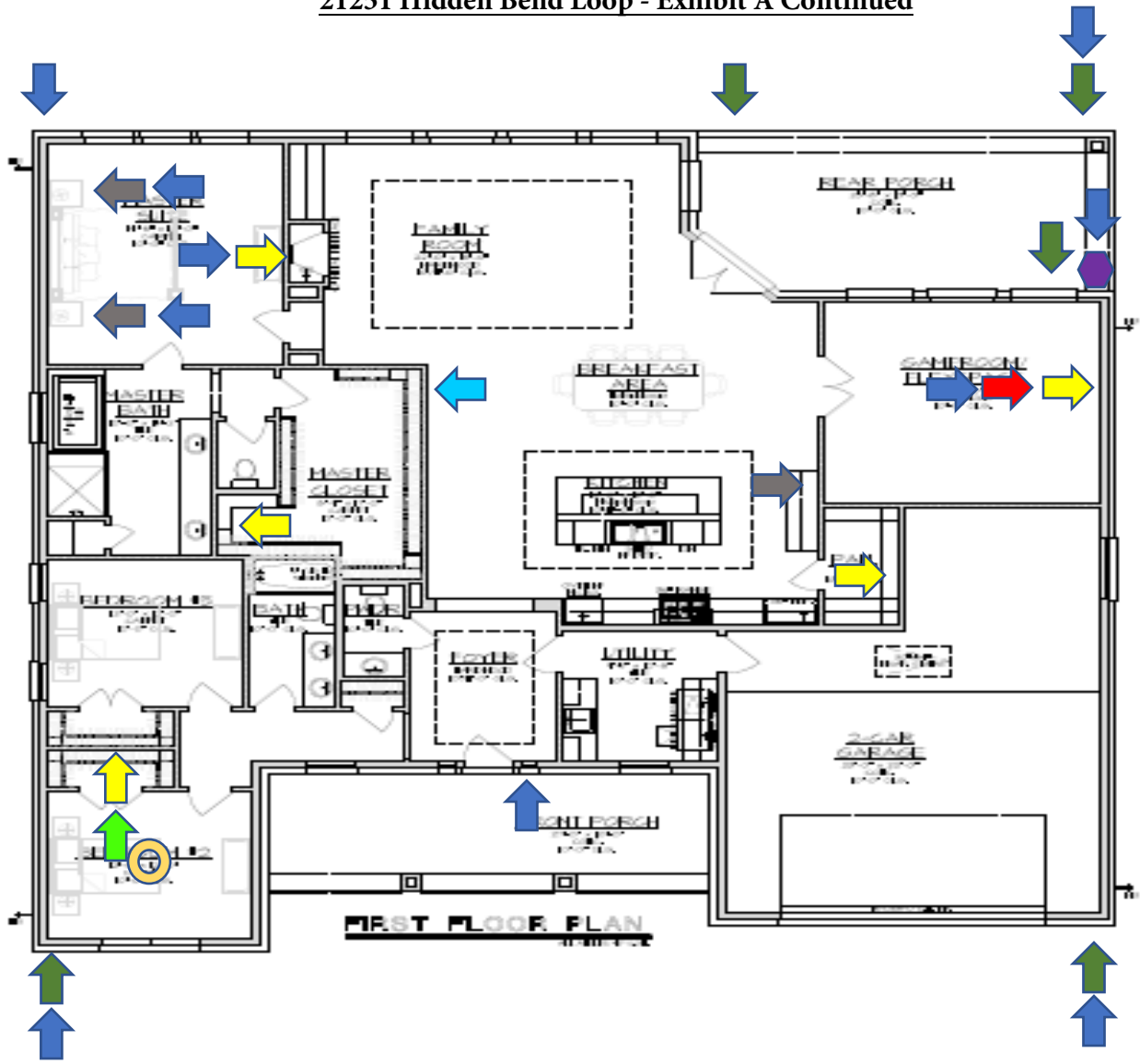


21251 Hidden Bend Loop - Exhibit A Continued



DS
ELR
DS
QC
DS
RS

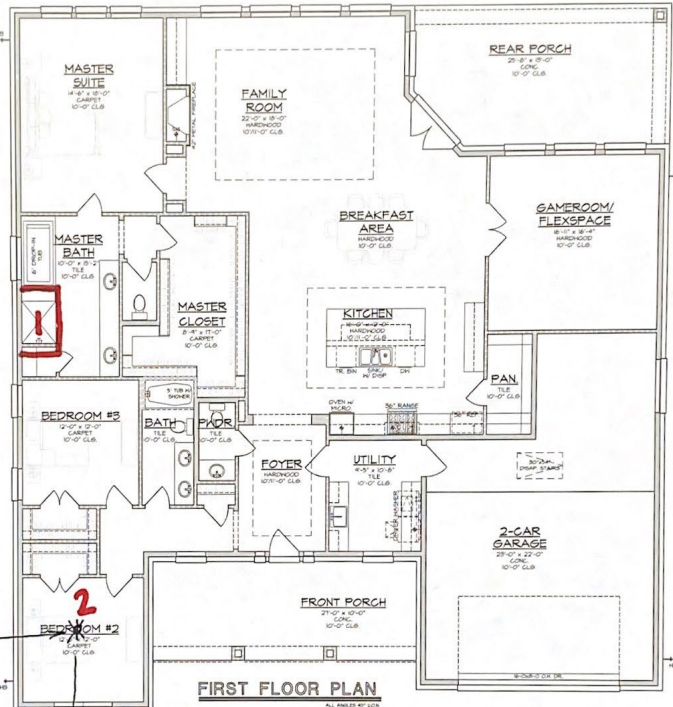
- ➡ Exterior Outlets
- ➡ USB Outlets
- ➡ Cat 5
- ➡ Interior Outlets
- ➡ Thermostat Preferred Location
- ➡ Conduit
- Floor Outlet
- ➡ Additional Camera Pre-wire
- ➡ Low Voltage Box Preferred Location

21251 Hidden Bend Loop - Exhibit A Continued

| AREA CALCULATIONS | |
|---------------------|--------------|
| FIRST FLOOR LIVING: | 2,036 SQ.FT. |
| TOTAL LIVING AREA: | 2,836 SQ.FT. |
| 3-CAR GARAGE: | 132 SQ.FT. |
| REAR PORCH: | 358 SQ.FT. |
| FRONT PORCH: | 288 SQ.FT. |
| TOTAL COVERED AREA: | 4,114 SQ.FT. |

- 1 - Expand shower 6" into linen closet.
- Make bench 18"

2
Floor outlet center of room



White Oak

FRONT ELEVATION

GARCIA & HERNANDEZ DESIGNS
 BUILDING DESIGNERS
 2885 WASHINGTON BLVD
 SUITE 100
 WASHINGTON, DC 20007
 (202) 462-1111
 www.garciaandhernandez.com

DRAWN BY:
 ELTON
 DATE:
 12/02/14
 REV. NO.: 01

SCALE:
 1/4" = 1'-0"
 JOB NUMBER:
 14-03
 WHITE OAK

SHEET NUMBER:
MKT

DS
ELR

DS
QC

DS
RG



21251 Hidden Bend Loop

Exhibit A Continued

Upgrades

- Fans in Bedrooms (2) - \$180
 - Bedroom 2
 - Bedroom 3
- Double sided cabinets on kitchen Island - \$1,550
- Built in next to fireplace (With Shelves) - \$2,450
- Nook (Master Shower Pony Wall) - \$150
- Nook (Secondary Bathroom) - \$150
- Head Knocker Cabinets (Master Bathroom Water Closet) - \$250
- Cedar post with brick base - \$600 (Color on Exhibit A)

Interior Outlet (\$35 Each)

- Gameroom (1)
 - East wall at 6ft - Display on floorplan
- Pantry (1)
 - Baseboard height - Display on floorplan
- Master Bedroom (1)
 - East wall at 6ft - Display on floorplan
- Master Closet (1)
 - In nook - Display on floorplan
- Bedroom #2 (1)
 - Next to Low Voltage Box - Display on floorplan

Conduit (\$95 each)

- Gameroom (1)
 - East wall at 6 ft - Display on floorplan



Exterior Outlets (\$50 each)

- In soffits - (4)
 - Display on floorplan
- Rear Porch (1)
 - Near gas stub out - Display on floorplan

Additional Camera Prewire (\$95 each)

- Rear Porch (1)
 - Southeast interior corner - Will display on floorplan

Additional Cat 5 (\$50 each)

- Gameroom (1)
 - East Wall at 6ft - Display on floorplan
- Front Porch (1)
 - East side of front door - Display on floorplan
- Master Bedroom (3)
 - East wall at 6ft - Display on floorplan
 - Next to USB outlet - Display on floorplan
 - Next to USB outlet - Display on floorplan
- Corners of house / next to prewires for security cameras (5)
 - Next to every prewire for a security camera there will be a Cat 5 – Displayed on floorplan

Floor Outlet (\$225 each)

- Bedroom #2 (1)
 - 7Ft from both South and West Wall (Middle of Room) - Display on floorplan

USB Outlets (\$65 each)

- Master Bedroom
 - (2) One on each side of space designated for bed. (Display on Floorplan)
- Kitchen
 - (1) Under east side cabinets. (Display on Floorplan)

Barn Door (\$950 each)

- Flexspace



- (1) Door leading into the flexspace

Master Bathroom Shower Extension (\$500)

- Move shower wall 6 inches towards the linen closet.
- 18 in bench

Total: \$8,315

Preferences

- Living Room
 - Thermostat relocated to opposite wall
- Utility Room
 - Standard Cabinetry
- Bedroom #2
 - Low voltage box in closet at 5 ft high and centered. (Shelve above it and shelve below it)