

SCALE 1" = 400'

- BOUNDARY LINE
- CENTER POINT
- POINT OF BEGINNING
- POINT OF INTERSECTION
- POINT OF TERMINATION
- POINT OF ADJACENT SURVEY
- POINT OF REFERENCE
- POINT OF CONVEYANCE
- POINT OF SURVEY
- POINT OF EVIDENCE
- POINT OF RECORD
- POINT OF DISCOVERY
- POINT OF OCCUPATION
- POINT OF POSSESSION
- POINT OF ACQUISITION
- POINT OF TRANSFER
- POINT OF ASSIGNMENT
- POINT OF DEED
- POINT OF MORTGAGE
- POINT OF LEASE
- POINT OF EASE
- POINT OF ENCUMBRANCE
- POINT OF RESTRICTION
- POINT OF COVENANT
- POINT OF CONDITION
- POINT OF WARRANTY
- POINT OF RELEASE
- POINT OF EXEMPTION
- POINT OF DISCHARGE
- POINT OF CANCELLATION
- POINT OF REVOCATION
- POINT OF RESCISSION
- POINT OF ANNULLMENT
- POINT OF REFORMATION
- POINT OF REINSTATEMENT
- POINT OF REDEMPTION
- POINT OF REDEMPTION BY OPERATION OF LAW
- POINT OF REDEMPTION BY AGREEMENT
- POINT OF REDEMPTION BY COURT ORDER
- POINT OF REDEMPTION BY PUBLIC AUCTION
- POINT OF REDEMPTION BY PRIVATE SALE
- POINT OF REDEMPTION BY TENDER
- POINT OF REDEMPTION BY PAYMENT
- POINT OF REDEMPTION BY SURRENDER
- POINT OF REDEMPTION BY EXERCISE OF POWER OF SALE
- POINT OF REDEMPTION BY EXERCISE OF POWER OF PURCHASE
- POINT OF REDEMPTION BY EXERCISE OF POWER OF FIDELITY
- POINT OF REDEMPTION BY EXERCISE OF POWER OF LIEN
- POINT OF REDEMPTION BY EXERCISE OF POWER OF ATTORNEY
- POINT OF REDEMPTION BY EXERCISE OF POWER OF EXECUTOR
- POINT OF REDEMPTION BY EXERCISE OF POWER OF ADMINISTRATOR
- POINT OF REDEMPTION BY EXERCISE OF POWER OF GUARDIAN
- POINT OF REDEMPTION BY EXERCISE OF POWER OF SUCCESSION
- POINT OF REDEMPTION BY EXERCISE OF POWER OF ESTATE
- POINT OF REDEMPTION BY EXERCISE OF POWER OF TRUST
- POINT OF REDEMPTION BY EXERCISE OF POWER OF PARTNERSHIP
- POINT OF REDEMPTION BY EXERCISE OF POWER OF JOINT TENANCY
- POINT OF REDEMPTION BY EXERCISE OF POWER OF TENANCY IN COMMON
- POINT OF REDEMPTION BY EXERCISE OF POWER OF CO-OWNERSHIP
- POINT OF REDEMPTION BY EXERCISE OF POWER OF CO-POSSESSION
- POINT OF REDEMPTION BY EXERCISE OF POWER OF CO-USE
- POINT OF REDEMPTION BY EXERCISE OF POWER OF CO-ENJOYMENT
- POINT OF REDEMPTION BY EXERCISE OF POWER OF CO-RESIDENCE
- POINT OF REDEMPTION BY EXERCISE OF POWER OF CO-EMPLOYMENT
- POINT OF REDEMPTION BY EXERCISE OF POWER OF CO-ASSOCIATION
- POINT OF REDEMPTION BY EXERCISE OF POWER OF CO-RELATION
- POINT OF REDEMPTION BY EXERCISE OF POWER OF CO-INTEREST
- POINT OF REDEMPTION BY EXERCISE OF POWER OF CO-PROPERTY
- POINT OF REDEMPTION BY EXERCISE OF POWER OF CO-POSSESSION
- POINT OF REDEMPTION BY EXERCISE OF POWER OF CO-USE
- POINT OF REDEMPTION BY EXERCISE OF POWER OF CO-ENJOYMENT
- POINT OF REDEMPTION BY EXERCISE OF POWER OF CO-RESIDENCE
- POINT OF REDEMPTION BY EXERCISE OF POWER OF CO-EMPLOYMENT
- POINT OF REDEMPTION BY EXERCISE OF POWER OF CO-ASSOCIATION
- POINT OF REDEMPTION BY EXERCISE OF POWER OF CO-RELATION
- POINT OF REDEMPTION BY EXERCISE OF POWER OF CO-INTEREST
- POINT OF REDEMPTION BY EXERCISE OF POWER OF CO-PROPERTY

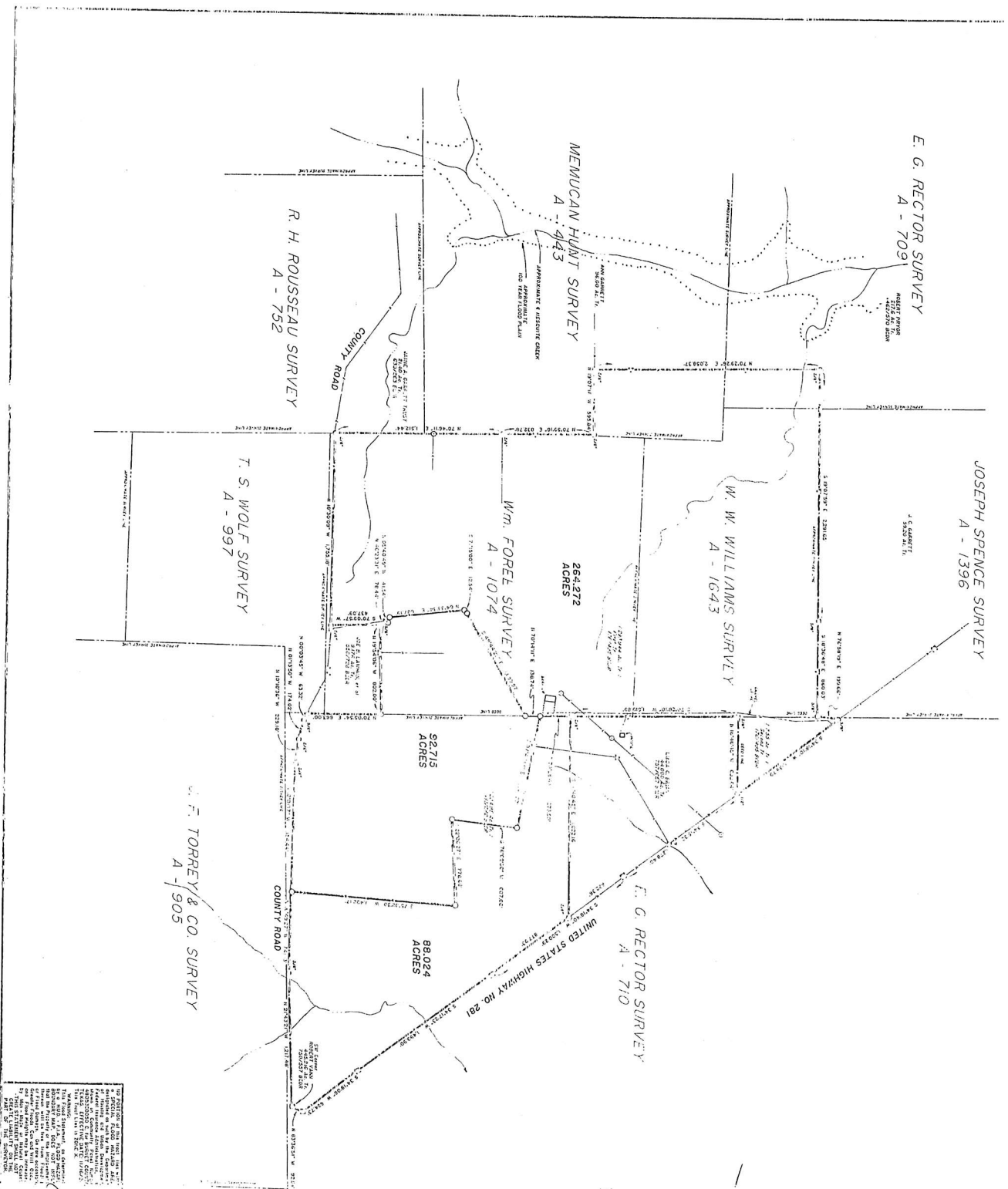
DALE L. OLSON
 REGISTERED PROFESSIONAL LAND SURVEYOR
 711 WATER STREET
 BOZEMAN, MONTANA

DATE: 11/15/2011
 SHEET: 1 OF 1
 SCALE: 1" = 400'

PROJECT: 711 WATER STREET
 BOZEMAN, MONTANA

DATE: 11/15/2011
 SHEET: 1 OF 1
 SCALE: 1" = 400'

PROJECT: 711 WATER STREET
 BOZEMAN, MONTANA



E. G. RECTOR SURVEY
A - 709

JOSEPH SPENCE SURVEY
A - 1396

W. W. WILLIAMS SURVEY
A - 1643

MEMUCAN HUNT SURVEY
A - 943

Wm. FORE SURVEY
A - 1074

R. H. ROUSSEAU SURVEY
A - 752

T. S. WOLF SURVEY
A - 997

F. TORREY & CO. SURVEY
A - 905

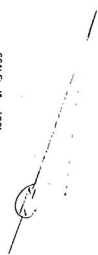
E. G. RECTOR SURVEY
A - 710

82,715
ACRES

88,024
ACRES

SCALE 1" = 400'

1.000' = 100.000'
2.000' = 200.000'
3.000' = 300.000'
4.000' = 400.000'
5.000' = 500.000'
6.000' = 600.000'
7.000' = 700.000'
8.000' = 800.000'
9.000' = 900.000'



THIS SURVEY WAS MADE BY DALE L. OLSON, REGISTERED PROFESSIONAL SURVEYOR, IN ACCORDANCE WITH THE PROVISIONS OF THE SURVEYING ACT, CHAPTER 133, ACTS 1909, AS AMENDED, AND THE RULES AND REGULATIONS THEREUNDER. THE SURVEY WAS MADE IN ACCORDANCE WITH THE PROVISIONS OF THE SURVEYING ACT, CHAPTER 133, ACTS 1909, AS AMENDED, AND THE RULES AND REGULATIONS THEREUNDER. THE SURVEY WAS MADE IN ACCORDANCE WITH THE PROVISIONS OF THE SURVEYING ACT, CHAPTER 133, ACTS 1909, AS AMENDED, AND THE RULES AND REGULATIONS THEREUNDER.

DALE L. OLSON
REGISTERED PROFESSIONAL SURVEYOR
211 WATER STREET
DALLAS, TEXAS

DALE L. OLSON
REGISTERED PROFESSIONAL SURVEYOR
211 WATER STREET
DALLAS, TEXAS

STATE OF TEXAS
COUNTY OF DALLAS