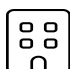







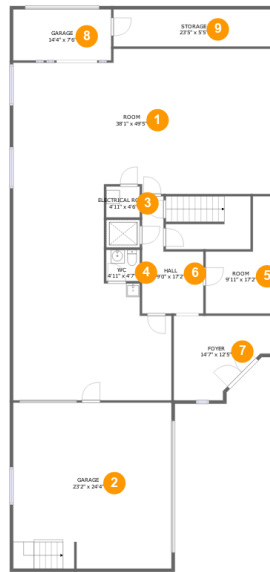
1607 Bonner Street, West End, Houston, Harris County, Texas, United States, 77007



Property Summary

 3 floors	 3 bedrooms	 2 bathrooms	 8,449 total sqft
 2 garages	 6,978 Gross Living Area sqft		

1607 Bonner Street, West End, Houston, Harris County, Texas, United States, 77007



Room Dimensions

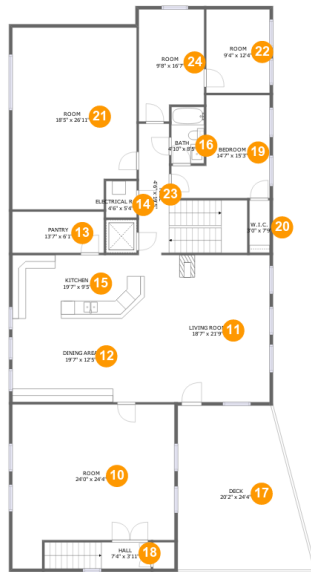
Floor 1

Total sqft: 2840

Living area: 1857

#	Room name	Dimensions	Area (sqft)	Counted as Living Area
1	Room	38'1" x 49'5"	1322 sq. ft	Yes
2	Garage	23'2" x 24'4"	563 sq. ft	No
3	Electrical Room	4'11" x 4'6"	22 sq. ft	No
4	Wc	4'11" x 4'7"	23 sq. ft	Yes
5	Room	9'11" x 17'2"	114 sq. ft	Yes
6	Hall	9'0" x 17'2"	107 sq. ft	Yes
7	Foyer	14'7" x 12'5"	145 sq. ft	Yes
8	Garage	14'4" x 7'6"	107 sq. ft	No
9	Storage	23'5" x 5'5"	128 sq. ft	No

1607 Bonner Street, West End, Houston, Harris County, Texas, United States, 77007



Room Dimensions

Floor 2

Total sqft: 3294

Living area: 2857

#	Room name	Dimensions	Area (sqft)	Counted as Living Area
10	Room	24'0" x 24'4"	501 sq. ft	Yes
11	Living Room	18'7" x 21'9"	404 sq. ft	Yes
12	Dining Area	19'7" x 12'5"	242 sq. ft	Yes
13	Pantry	13'7" x 6'1"	83 sq. ft	Yes
14	Electrical Room	4'6" x 5'4"	24 sq. ft	No
15	Kitchen	19'7" x 9'5"	184 sq. ft	Yes
16	Bath	4'10" x 8'5"	41 sq. ft	Yes
17	Deck	20'2" x 24'4"	413 sq. ft	No
18	Hall	7'4" x 3'11"	62 sq. ft	Yes
19	Bedroom	14'7" x 15'3"	168 sq. ft	Yes
20	W.i.c.	3'0" x 7'9"	23 sq. ft	Yes

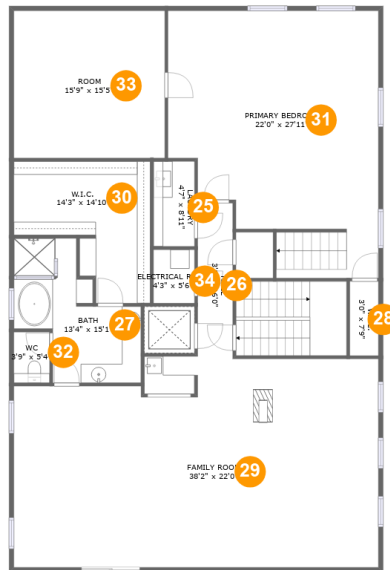
Scan captured on Tue, 21 May 2024 20:46:06 GMT

Information is calculated by CubiCasa technology; deemed highly reliable but not guaranteed.

**1607 Bonner Street, West End, Houston, Harris
County, Texas, United States, 77007**

#	Room name	Dimensions	Area (sqft)	Counted as Living Area
21	Room	18'5" x 26'11"	474 sq. ft	Yes
22	Room	9'4" x 12'4"	116 sq. ft	Yes
23	Hall	4'6" x 19'5"	177 sq. ft	Yes
24	Room	9'8" x 16'7"	148 sq. ft	Yes

1607 Bonner Street, West End, Houston, Harris County, Texas, United States, 77007



Room Dimensions

Floor 3

Total sqft: 2315

Living area: 2264

#	Room name	Dimensions	Area (sqft)	Counted as Living Area
25	Laundry	4'7" x 8'11"	41 sq. ft	Yes
26	Hall	3'8" x 16'0"	59 sq. ft	Yes
27	Bath	13'4" x 15'1"	132 sq. ft	Yes
28	W.i.c.	3'0" x 7'9"	23 sq. ft	No
29	Family Room	38'2" x 22'0"	794 sq. ft	Yes
30	W.i.c.	14'3" x 14'10"	157 sq. ft	Yes
31	Primary Bedroom	22'0" x 27'11"	519 sq. ft	Yes
32	Wc	3'9" x 5'4"	20 sq. ft	Yes
33	Room	15'9" x 15'5"	243 sq. ft	Yes
34	Electrical Room	4'3" x 5'6"	24 sq. ft	No

1607 Bonner Street, West End, Houston, Harris County, Texas, United States, 77007

1 Floor 1 - Room



Dimensions: 38'1" x 49'5"
Area: 1322 sq. ft
Counted as Living Area:
Yes

Heated: Yes
Finished: Yes
Enclosed: Yes
Contiguous:
Yes
Permitted: Yes
Wet Space: No
Addition: No
Conversion: No

2 Floor 1 - Garage



Dimensions: 23'2" x 24'4"
Area: 563 sq. ft
Counted as Living Area: No

Heated: No
Finished: No
Enclosed: Yes
Contiguous: Yes
Permitted: Yes
Wet Space: No
Addition: No
Conversion: No

1607 Bonner Street, West End, Houston, Harris County, Texas, United States, 77007

3 Floor 1 - Electrical Room



Dimensions: 4'11" x 4'6"
Area: 22 sq. ft
Counted as Living Area: No

Heated: No
Finished: No
Enclosed: Yes
Contiguous: Yes
Permitted: Yes
Wet Space: No
Addition: No
Conversion: No

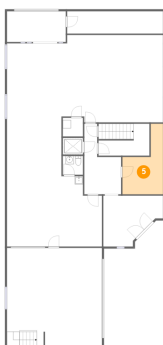
4 Floor 1 - Wc



Dimensions: 4'11" x 4'7"
Area: 23 sq. ft
Counted as Living Area: Yes

Heated: Yes
Finished: Yes
Enclosed: Yes
Contiguous: Yes
Permitted: Yes
Wet Space: Yes
Addition: No
Conversion: No

5 Floor 1 - Room



Dimensions: 9'11" x 17'2"
Area: 114 sq. ft
Counted as Living Area: Yes

Heated: Yes
Finished: Yes
Enclosed: Yes
Contiguous: Yes
Permitted: Yes
Wet Space: No
Addition: No
Conversion: No

1607 Bonner Street, West End, Houston, Harris County, Texas, United States, 77007

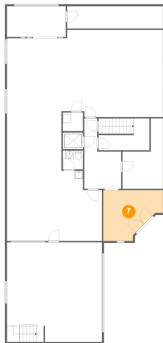
6 Floor 1 - Hall



Dimensions: 9'0" x 17'2"
Area: 107 sq. ft
Counted as Living Area:
Yes

Heated: Yes
Finished: Yes
Enclosed: Yes
Contiguous:
Yes
Permitted: Yes
Wet Space: No
Addition: No
Conversion: No

7 Floor 1 - Foyer



Dimensions: 14'7" x 12'5"
Area: 145 sq. ft
Counted as Living Area:
Yes

Heated: Yes
Finished: Yes
Enclosed: Yes
Contiguous:
Yes
Permitted: Yes
Wet Space: No
Addition: No
Conversion: No

8 Floor 1 - Garage



Dimensions: 14'4" x 7'6"
Area: 107 sq. ft
Counted as Living Area: No

Heated: No
Finished: No
Enclosed: Yes
Contiguous: Yes
Permitted: Yes
Wet Space: No
Addition: No
Conversion: No

1607 Bonner Street, West End, Houston, Harris County, Texas, United States, 77007

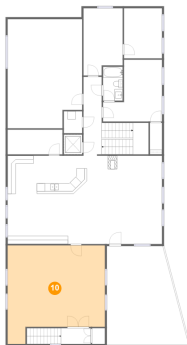
9 Floor 1 - Storage



Dimensions: 23'5" x 5'5"
Area: 128 sq. ft
Counted as Living Area: No

Heated: No
Finished: No
Enclosed: No
Contiguous: Yes
Permitted: Yes
Wet Space: No
Addition: No
Conversion: No

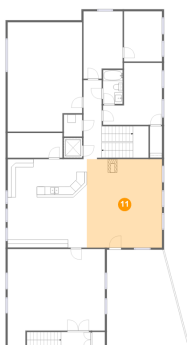
10 Floor 2 - Room



Dimensions: 24'0" x 24'4"
Area: 501 sq. ft
Counted as Living Area: Yes

Heated: Yes
Finished: Yes
Enclosed: Yes
Contiguous: Yes
Permitted: Yes
Wet Space: No
Addition: No
Conversion: No

11 Floor 2 - Living Room

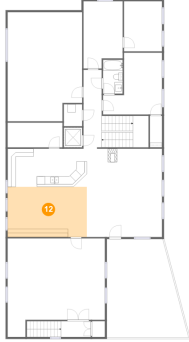


Dimensions: 18'7" x 21'9"
Area: 404 sq. ft
Counted as Living Area: Yes

Heated: Yes
Finished: Yes
Enclosed: Yes
Contiguous: Yes
Permitted: Yes
Wet Space: No
Addition: No
Conversion: No

1607 Bonner Street, West End, Houston, Harris County, Texas, United States, 77007

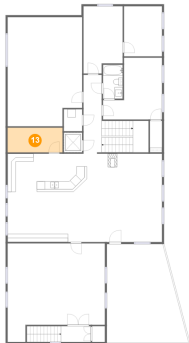
12 Floor 2 - Dining Area



Dimensions: 19'7" x 12'5"
Area: 242 sq. ft
Counted as Living Area:
Yes

Heated: Yes
Finished: Yes
Enclosed: Yes
Contiguous:
Yes
Permitted: Yes
Wet Space: No
Addition: No
Conversion: No

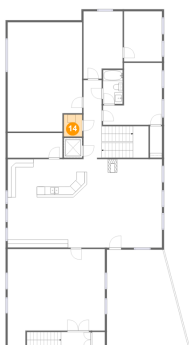
13 Floor 2 - Pantry



Dimensions: 13'7" x 6'1"
Area: 83 sq. ft
Counted as Living Area:
Yes

Heated: Yes
Finished: Yes
Enclosed: Yes
Contiguous:
Yes
Permitted: Yes
Wet Space: No
Addition: No
Conversion: No

14 Floor 2 - Electrical Room

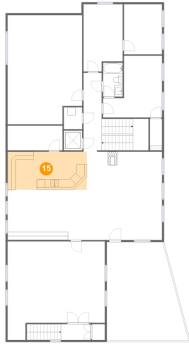


Dimensions: 4'6" x 5'4"
Area: 24 sq. ft
Counted as Living Area: No

Heated: No
Finished: No
Enclosed: Yes
Contiguous: Yes
Permitted: Yes
Wet Space: No
Addition: No
Conversion: No

1607 Bonner Street, West End, Houston, Harris County, Texas, United States, 77007

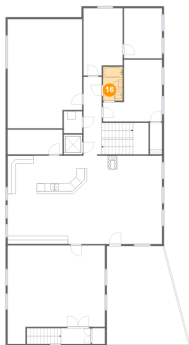
15 Floor 2 - Kitchen



Dimensions: 19'7" x 9'5"
Area: 184 sq. ft
Counted as Living Area:
Yes

Heated: Yes
Finished: Yes
Enclosed: Yes
Contiguous:
Yes
Permitted: Yes
Wet Space: No
Addition: No
Conversion: No

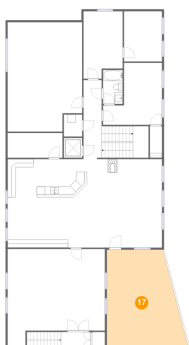
16 Floor 2 - Bath



Dimensions: 4'10" x 8'5"
Area: 41 sq. ft
Counted as Living Area:
Yes

Heated: Yes
Finished: Yes
Enclosed: Yes
Contiguous:
Yes
Permitted: Yes
Wet Space: Yes
Addition: No
Conversion: No

17 Floor 2 - Deck

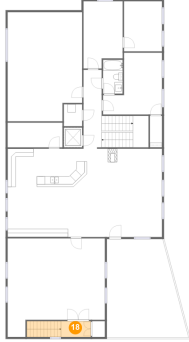


Dimensions: 20'2" x 24'4"
Area: 413 sq. ft
Counted as Living Area: No

Heated: No
Finished: Yes
Enclosed: No
Contiguous: Yes
Permitted: Yes
Wet Space: No
Addition: No
Conversion: No

1607 Bonner Street, West End, Houston, Harris County, Texas, United States, 77007

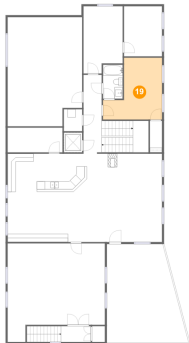
18 Floor 2 - Hall



Dimensions: 7'4" x 3'11"
Area: 62 sq. ft
Counted as Living Area:
Yes

Heated: Yes
Finished: Yes
Enclosed: Yes
Contiguous:
Yes
Permitted: Yes
Wet Space: No
Addition: No
Conversion: No

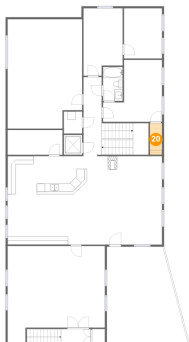
19 Floor 2 - Bedroom



Dimensions: 14'7" x 15'3"
Area: 168 sq. ft
Counted as Living Area:
Yes

Heated: Yes
Finished: Yes
Enclosed: Yes
Contiguous:
Yes
Permitted: Yes
Wet Space: No
Addition: No
Conversion: No

20 Floor 2 - W.i.c.

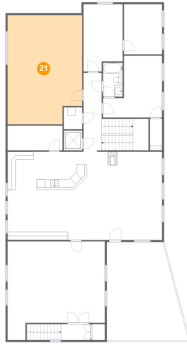


Dimensions: 3'0" x 7'9"
Area: 23 sq. ft
Counted as Living Area:
Yes

Heated: Yes
Finished: Yes
Enclosed: Yes
Contiguous:
Yes
Permitted: Yes
Wet Space: No
Addition: No
Conversion: No

1607 Bonner Street, West End, Houston, Harris County, Texas, United States, 77007

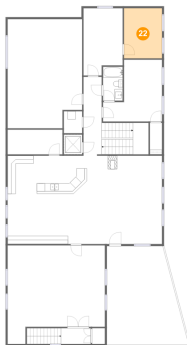
21 Floor 2 - Room



Dimensions: 18'5" x 26'11"
Area: 474 sq. ft
Counted as Living Area:
Yes

Heated: Yes
Finished: Yes
Enclosed: Yes
Contiguous:
Yes
Permitted: Yes
Wet Space: No
Addition: No
Conversion: No

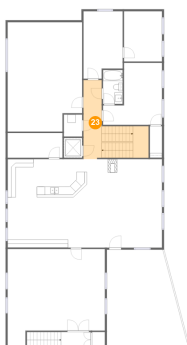
22 Floor 2 - Room



Dimensions: 9'4" x 12'4"
Area: 116 sq. ft
Counted as Living Area:
Yes

Heated: Yes
Finished: Yes
Enclosed: Yes
Contiguous:
Yes
Permitted: Yes
Wet Space: No
Addition: No
Conversion: No

23 Floor 2 - Hall

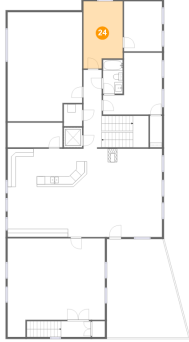


Dimensions: 4'6" x 19'5"
Area: 177 sq. ft
Counted as Living Area:
Yes

Heated: Yes
Finished: Yes
Enclosed: Yes
Contiguous:
Yes
Permitted: Yes
Wet Space: No
Addition: No
Conversion: No

1607 Bonner Street, West End, Houston, Harris County, Texas, United States, 77007

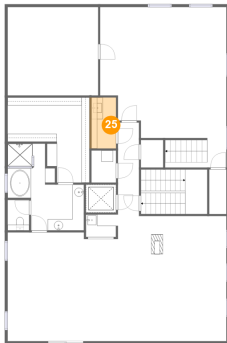
24 Floor 2 - Room



Dimensions: 9'8" x 16'7"
Area: 148 sq. ft
Counted as Living Area:
Yes

Heated: Yes
Finished: Yes
Enclosed: Yes
Contiguous:
Yes
Permitted: Yes
Wet Space: No
Addition: No
Conversion: No

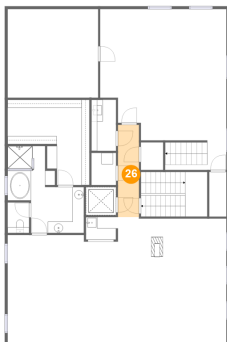
25 Floor 3 - Laundry



Dimensions: 4'7" x 8'11"
Area: 41 sq. ft
Counted as Living Area:
Yes

Heated: Yes
Finished: Yes
Enclosed: Yes
Contiguous:
Yes
Permitted: Yes
Wet Space: No
Addition: No
Conversion: No

26 Floor 3 - Hall

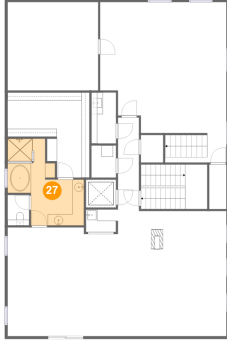


Dimensions: 3'8" x 16'0"
Area: 59 sq. ft
Counted as Living Area:
Yes

Heated: Yes
Finished: Yes
Enclosed: Yes
Contiguous:
Yes
Permitted: Yes
Wet Space: No
Addition: No
Conversion: No

1607 Bonner Street, West End, Houston, Harris County, Texas, United States, 77007

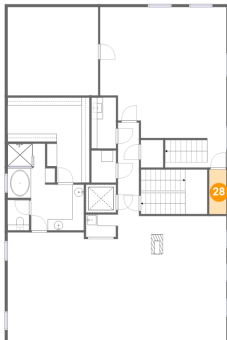
27 Floor 3 - Bath



Dimensions: 13'4" x 15'1"
Area: 132 sq. ft
Counted as Living Area:
Yes

Heated: Yes
Finished: Yes
Enclosed: Yes
Contiguous:
Yes
Permitted: Yes
Wet Space: Yes
Addition: No
Conversion: No

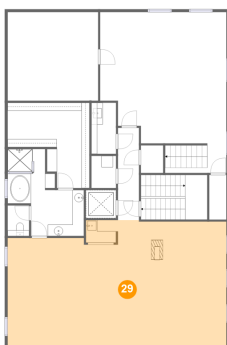
28 Floor 3 - W.i.c.



Dimensions: 3'0" x 7'9"
Area: 23 sq. ft
Counted as Living Area: No

Heated: Yes
Finished: Yes
Enclosed: Yes
Contiguous: No
Permitted: Yes
Wet Space: No
Addition: No
Conversion: No

29 Floor 3 - Family Room

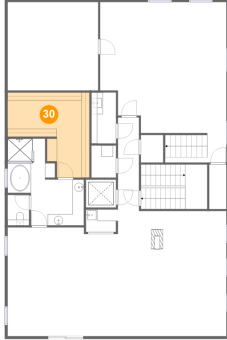


Dimensions: 38'2" x 22'0"
Area: 794 sq. ft
Counted as Living Area:
Yes

Heated: Yes
Finished: Yes
Enclosed: Yes
Contiguous:
Yes
Permitted: Yes
Wet Space: No
Addition: No
Conversion: No

1607 Bonner Street, West End, Houston, Harris County, Texas, United States, 77007

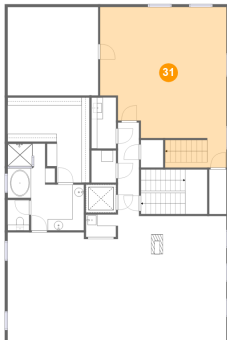
30 Floor 3 - W.i.c.



Dimensions: 14'3" x 14'10"
Area: 157 sq. ft
Counted as Living Area:
Yes

Heated: Yes
Finished: Yes
Enclosed: Yes
Contiguous:
Yes
Permitted: Yes
Wet Space: No
Addition: No
Conversion: No

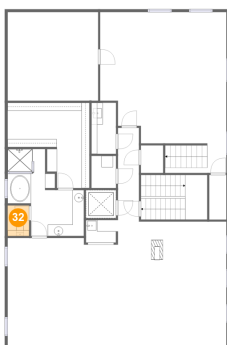
31 Floor 3 - Primary Bedroom



Dimensions: 22'0" x 27'11"
Area: 519 sq. ft
Counted as Living Area:
Yes

Heated: Yes
Finished: Yes
Enclosed: Yes
Contiguous:
Yes
Permitted: Yes
Wet Space: No
Addition: No
Conversion: No

32 Floor 3 - Wc

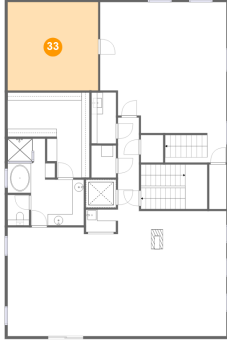


Dimensions: 3'9" x 5'4"
Area: 20 sq. ft
Counted as Living Area:
Yes

Heated: Yes
Finished: Yes
Enclosed: Yes
Contiguous:
Yes
Permitted: Yes
Wet Space: Yes
Addition: No
Conversion: No

1607 Bonner Street, West End, Houston, Harris County, Texas, United States, 77007

33 Floor 3 - Room



Dimensions: 15'9" x 15'5"
Area: 243 sq. ft
Counted as Living Area:
Yes

Heated: Yes
Finished: Yes
Enclosed: Yes
Contiguous:
Yes
Permitted: Yes
Wet Space: No
Addition: No
Conversion: No

34 Floor 3 - Electrical Room



Dimensions: 4'3" x 5'6"
Area: 24 sq. ft
Counted as Living Area: No

Heated: No
Finished: No
Enclosed: Yes
Contiguous: Yes
Permitted: Yes
Wet Space: No
Addition: No
Conversion: No