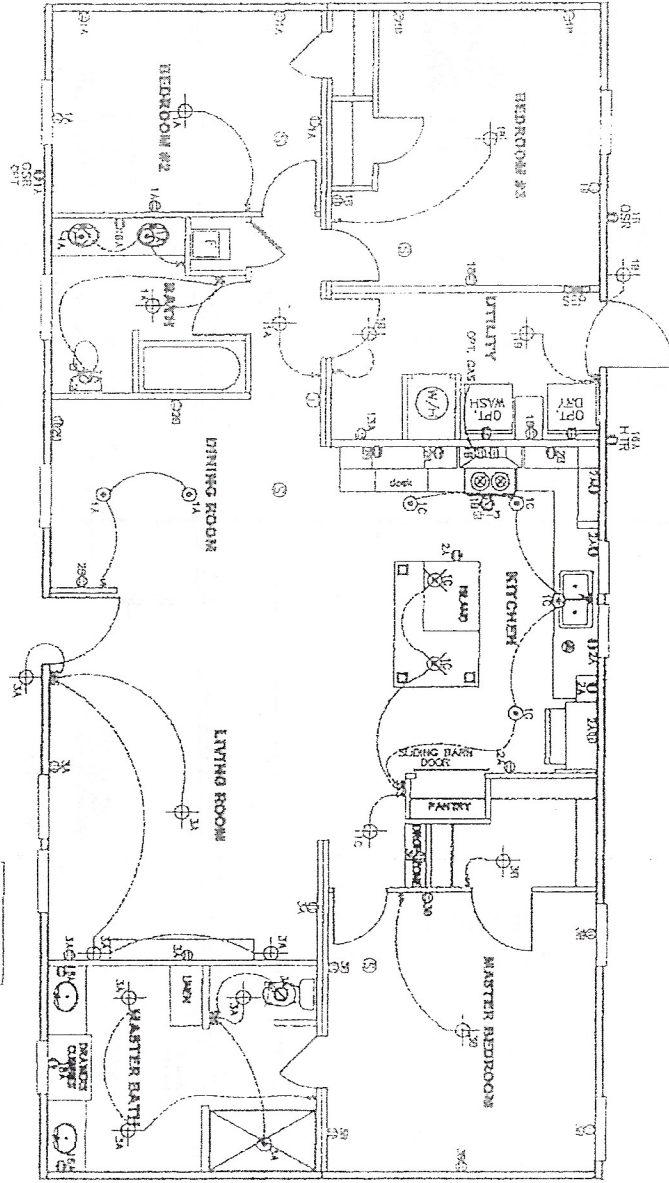
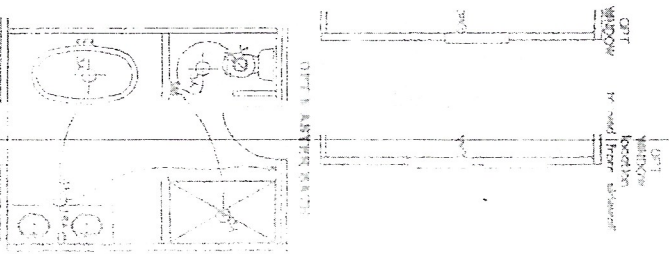
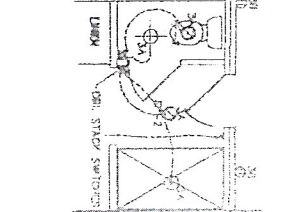
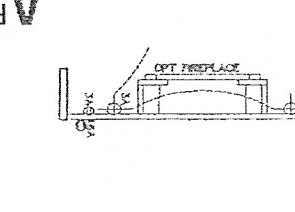
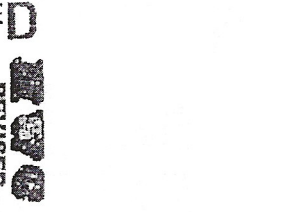
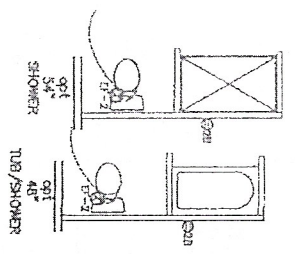


CIRCUIT	CIRCUIT #	WIRE	BREAKER	CIRCUIT	WIRE	BREAKER	CIRCUIT	WIRE	BREAKER
1. LIFT/PROP	1A,1B,1C,3A,3B	14-2	10-SP	WATER HEATER	4A,5A	SEE NOTE #3	BATHROOM	16A	12-2
2. DISHWASHER	2A,2B	12-2	20-SP	RANGE	5B,7A	SEE NOTE #3	OR C/D/S	BB	SEE NOTE #8
3. WASHER	12A	12-2	20-SP	BA,BA,D,10A,D	9A	SEE NOTE #3	OR P/P/V	11A,B	SEE NOTE #8
ORDER	5A,7B	SEE NOTE #3		OR D/W/M	4B	SEE NOTE #3	PRETZER	13A	SEE NOTE #8



- NOTES:
1. ALL CIRCUITS SHOWN ARE FOR REFERENCE AND MAY BE CHANGED BASED ON OPTIONAL COMPONENTS INSTALLED IN THE HOME.
 2. REFER TO EL SECTION OF THE DATA FOR SYMBOL CHART.
 3. EITHER LIGHT OR RECEPTACLE MUST CONNECT TO SWITCH.
 4. EF-1E 50 CFM EXHAUST FAN REQUIRED FOR THERMAL ZONE II. THERMAL ZONES I & II MAY USE FAN OR WINDOW W/1.5 SQ. FT. OPENABLE CLASS.
 5. EF-2E 50 CFM EXHAUST FAN REQUIRED THERMAL ZONE I, II, AND III.
 6. EF-3E 100 CFM RANGE EXHAUST FAN, SWITCH AT HOOD.
 7. EF-4E WHOLE HOUSE VENTILATION PER REQUIREMENTS IN S-14V-10 & 10A OR H-HV-11 & 11A OF DAPP.
 8. REFER TO EL SECTION OF THE DATA OR THE UFG INSTALLATION INSTRUCTIONS FOR PROPER WIRE SIZE AND BREAKER SIZE FOR SPECIFIC APPLIANCES AND MODEL BEING INSTALLED.
 9. ALL SWITCH ALARMS TO BE LOCATED ON THE CEILING.
 10. DIMENSIONS SHOWN ON PRINT ARE APPROXIMATE AND TO BE USED ONLY AS A GUIDELINE.



APPROVED
REVISED
 JUNE 12 2020
 EP-28-5157
APPROVED

Federal Manufactured Home Construction and Safety Standards
 N/A
 SOFT (W/OPT) POORH/PORPOC
 CMH
 MANUFACTURING
 20' / 56' SHOWER
 ELECTRICAL PLAN-08