

140 Whipple Drive

---

# New Construction In the Heart of Bellaire

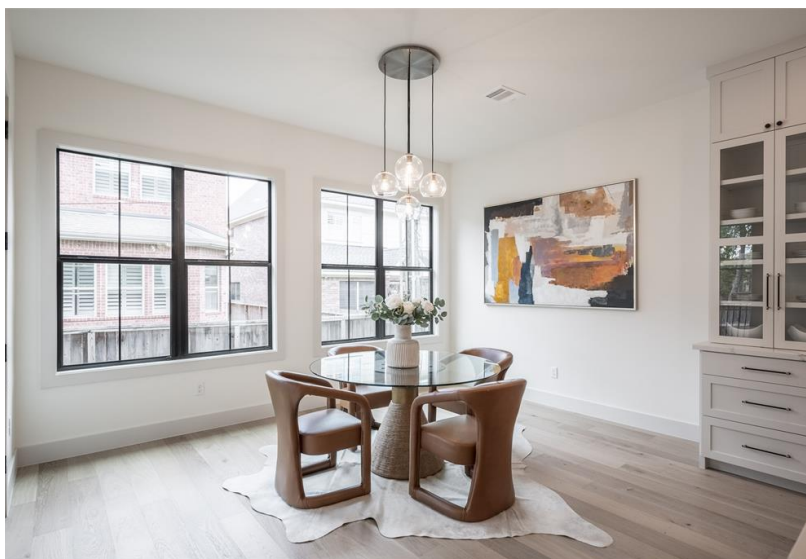








Sophisticated style meets Bellaire convenience in this stunning new-construction five-bedroom, five-and-a-half bathroom showplace featuring premium finishes and a sun-kissed layout perfect for entertaining, multi-generational living, and comfortable daily life. The dramatic double-height foyer welcomes you inside to discover soaring ceilings, wide-plank oak floors, and elegant lighting. A great room with built-ins and a fireplace flows to the open Thermador kitchen flanked by a wet bar, breakfast nook, pantry, and utility/mudroom. Near the entry, a study and main-level bedroom suite add convenience. Above, sleep soundly in a palatial owner's suite featuring an en suite spa bathroom, laundry, and custom walk-in. A large game room with a wet bar and media room is joined by three secondary suites and an elevator-capable closet. Outside, a covered porch overlooks the yard. Within walking distance to Bellaire High School, the Civic Center, and Zindler and Loftin Parks, the hub of all fun Bellaire activities!

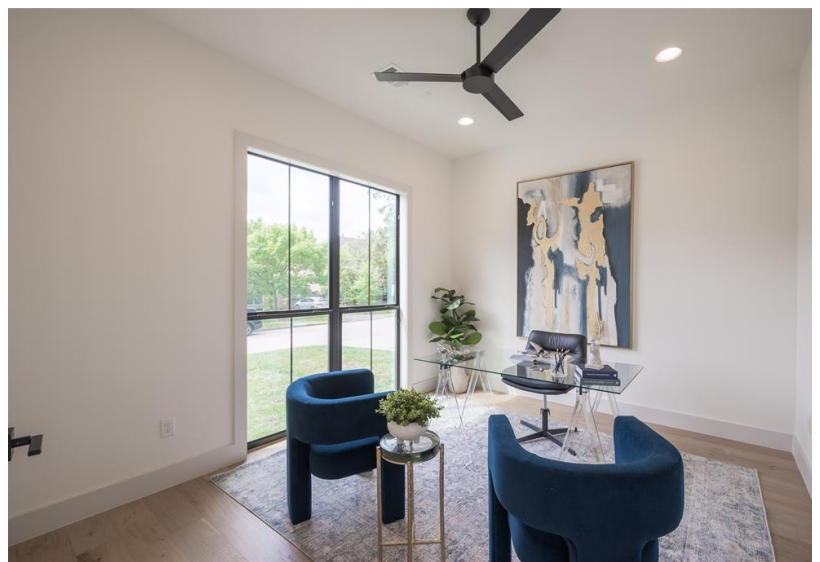






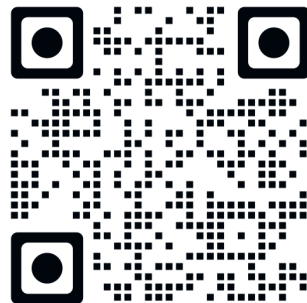


# Sophisticated Style Meets Bellaire Convenience In This Stunning New Construction Home

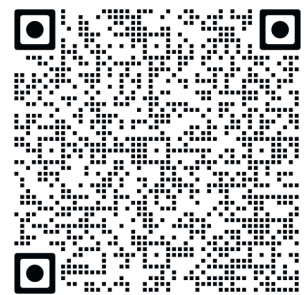








Scan For 3D  
Virtual Tour &  
Floor Plans



Scan For  
Complimentary  
Home Valuation