



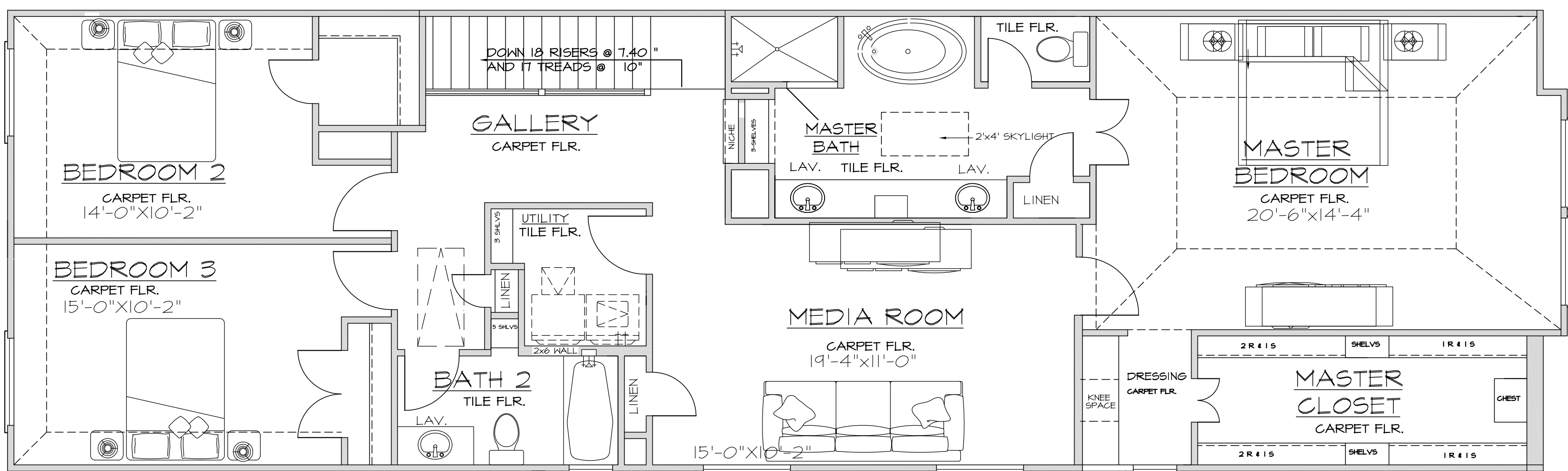
ELEVATION A

TOTAL LIVING AREA: 2469 SQ.FT.



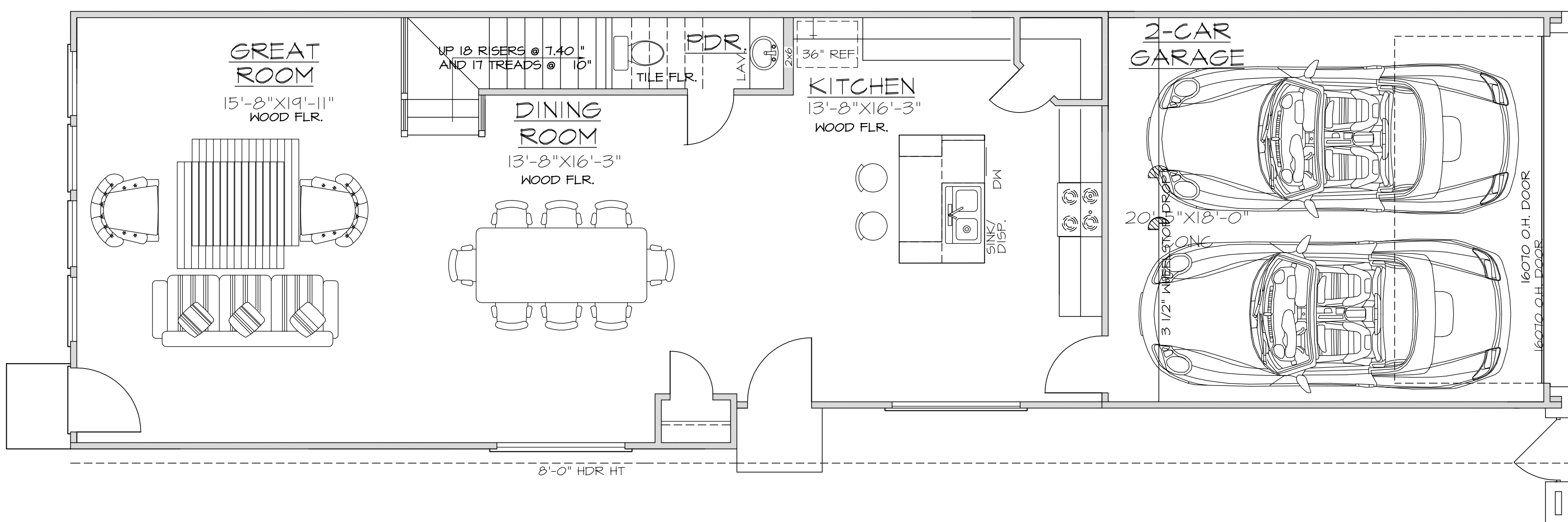
ELEVATION B

TOTAL LIVING AREA: 2469 SQ.FT.



SECOND FLOOR PLAN

1/4"=1'-0" ALL ANGLES 45° U.O.N.



FIRST FLOOR PLAN

1/4"=1'-0" ALL ANGLES 45° U.O.N.

Floor plan and elevations are subject to change without notice.

No representation, either express or implied, is made to the suitability or accuracy of information contained herein.