

Wolfe Airpark (3T2) Pilot Information

This document is for general information purposes only. Refer to the FAA's AFD for the most accurate information.

Coordinates: N29°28.75' W95°19.59'

Ident: 3T2

Elevation: 55' MSL

CTAF: 122.9

Lighting: Non-standard solar powered runway edge lighting only.

Services: No fuel is available on the field. No public bathrooms. No FBO. All hangars and ramp space are private property.

Contact Info: (Please contact for current runway conditions.)

Kris Giber (Airport Manager / Resident) - 915-449-9100

Bryan Jones (Civic Club President / Resident) - 281-309-1959

Remarks:

Touch and go landings are not allowed at this time due to field rehabilitation efforts. Wolfe airpark is a residential community so please be considerate of our homeowners and neighbors when you come to the airpark.

Runway Information

Runway 02-20: 2910' x 80' (Turf)

Pattern: Left Traffic, 1000' msl pattern altitude

Landing Obstacles

02 – Trees

20 – Fence, Road, Ditch

Pattern – There is a 342' MSL tower just .6nm northeast of the runway 20 threshold. For pilots used to flying a tighter pattern this tower can be very close to where the left base turn is made for runway 20. Be aware and use caution.

Taxiing

As shown below on the photograph the grass surface parallel to the runway on the east side is not suitable for aircraft and should not be used to taxi on. After landing please back-taxi on the runway if necessary. Please plan your pattern spacing with this in mind as well.

Surface Conditions

Often times the runway is dry enough to use within 24 hours of a decent rain. Please contact Kris or Bryan for the current conditions if you are unsure or unfamiliar. It is possible for the center of the runway to be dry and firm while the edges are still soft. Use caution when turning around to back-taxi or when exiting the runway. The first few hundred feet of each end of the runway is the last to dry out. This area is shown below.

Runway Identification

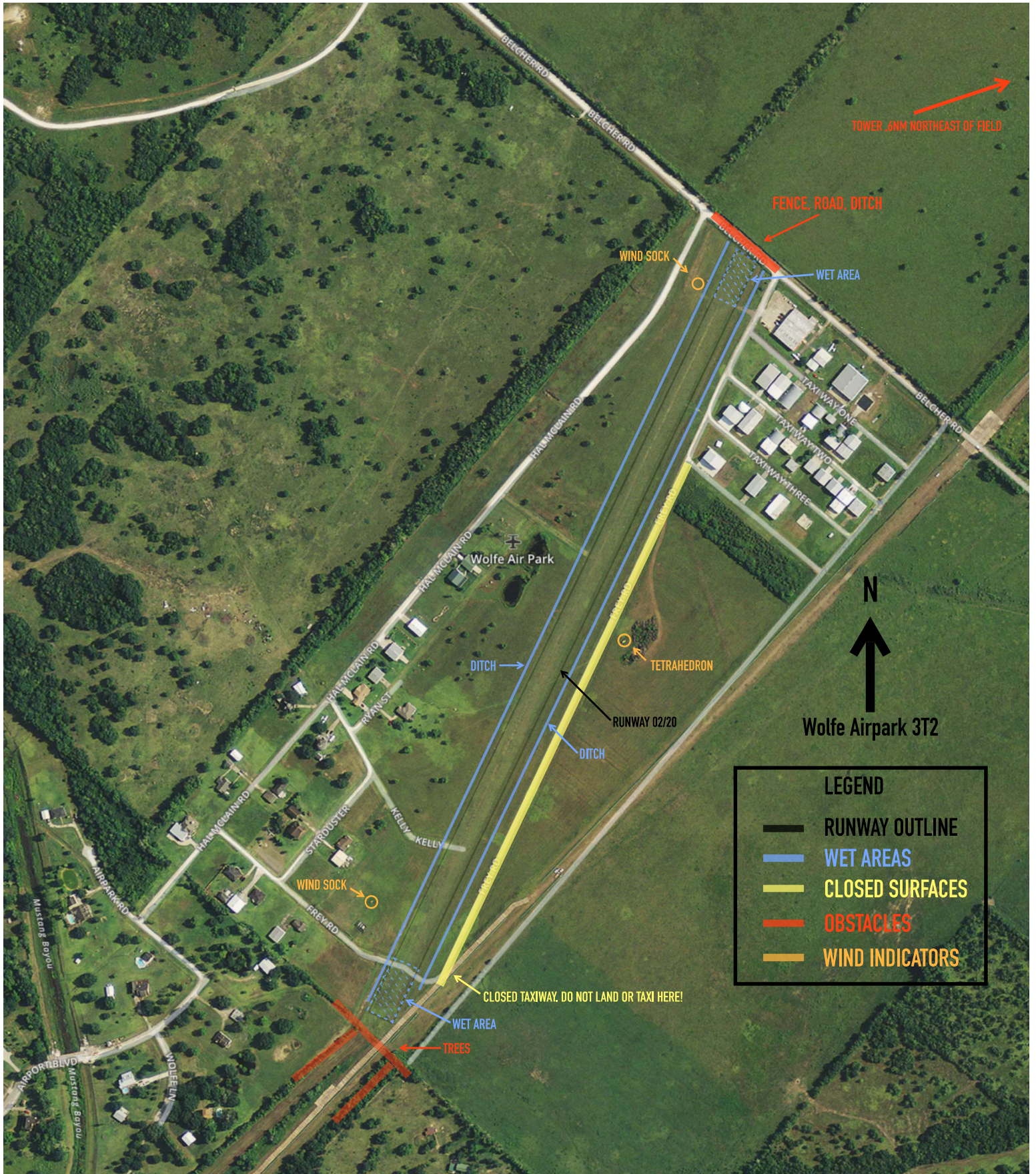
A combination of factors can sometimes lead to the runway being difficult to spot if you are unfamiliar. It has happened before that aircraft have lined up on the road to the east of the runway or the ditch between the two. The solar powered runway edge lights are the easiest way to positively ID the runway in these conditions. There are also white runway threshold markers on the threshold of runway 20. Use caution and go around if you have any doubts.

Runway Crown

The runway was built with a good crown shape in the center that allows rain to drain easily into the ditches down each side. While a grass runway can be forgiving of poor pilot coordination, the crowned surface is not. Lateral control becomes difficult quickly if you veer away from the center of the runway.

Airport Diagram

See next page!



Disclaimer of Liability

The material and information contained on this document is for general information purposes only. You should not rely upon the material or information on this document as a basis for making any aeronautical decisions about the operation of your aircraft.

While we endeavor to keep the information up to date and correct, the Wolfe Airpark Civic Club makes no representations or warranties of any kind, express or implied about the completeness, accuracy, reliability, suitability or availability with respect to the website or the information, products, services or related graphics contained on the website for any purpose. Any reliance you place on such material is therefore, strictly at your own risk.