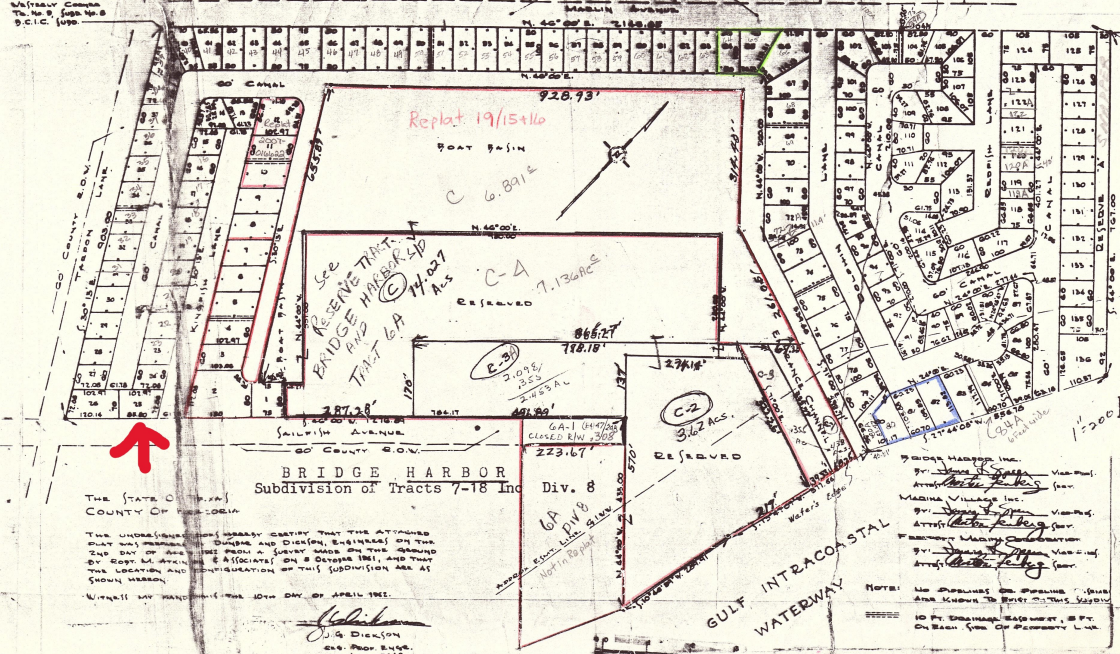
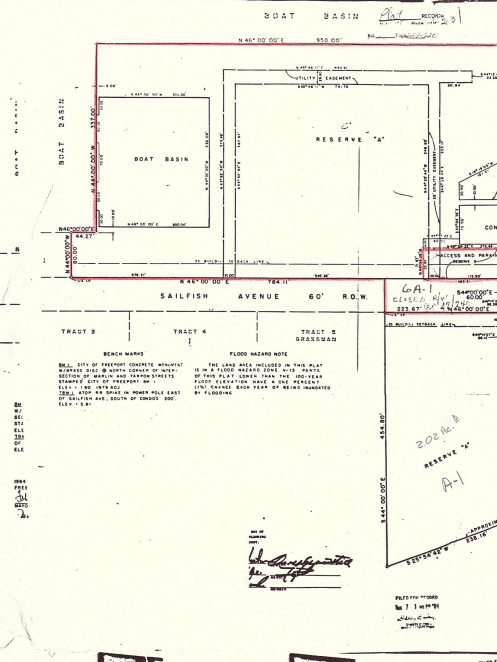
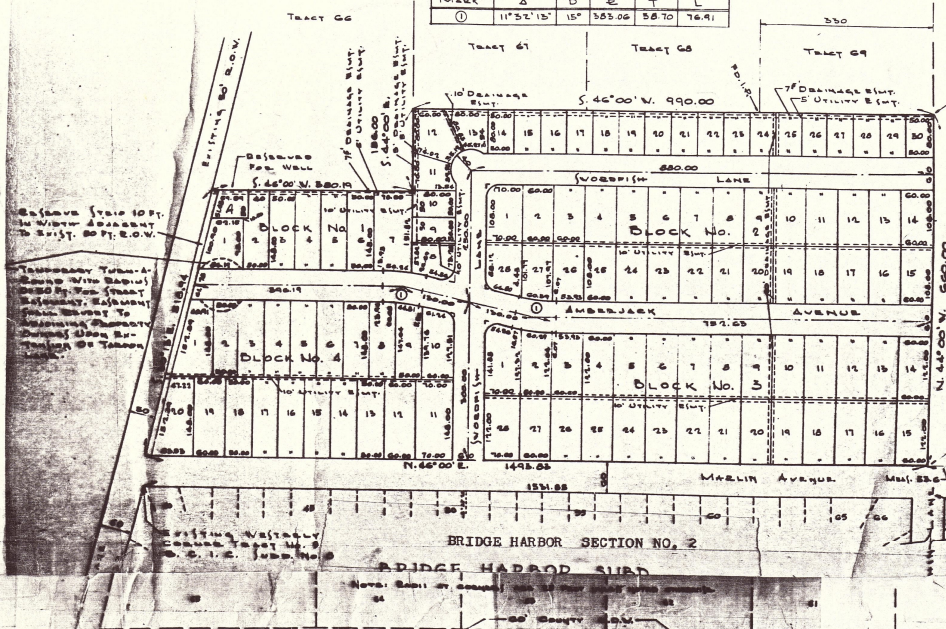


Div. 8
(2-3)

Wren
SECRETARY
See a Red
CHAIRMAN

MARK	A	D	E	T	L
①	11°52'15"	15'	303.06	58.70	76.91



BRIDGE HARBOR
Subdivision of Tracts 7-18 Inc. Div. 8

THE STATE OF TEXAS
COUNTY OF DALLAS

WE, THE UNDERSIGNED, HEREBY CERTIFY THAT THE ATTACHED COPY AND ORIGINAL OF THIS SURVEY WAS MADE BY THE UNDERSIGNED ENGINEER ON THE DAY OF APRIL 11, 2012, AND THAT THE LOCATION AND CONTIGUATION OF THIS SUBDIVISION ARE AS SHOWN HEREON.

WITNESSED MY HAND AND SEAL ON THE 11th DAY OF APRIL 2012.

J. G. Dixon
J. G. Dixon
C.E. No. 1042
THE DATE 2012

BRIDGE HARBOR
MARINA
FREEPORT

BRIDGE HARBOR

GULF INTERCOASTAL WATERWAY

NOTE: No structure or building shall be located on any lot shown on this survey.

NO. 1000
NO. 1001
NO. 1002
NO. 1003
NO. 1004
NO. 1005
NO. 1006
NO. 1007
NO. 1008
NO. 1009
NO. 1010
NO. 1011
NO. 1012
NO. 1013
NO. 1014
NO. 1015
NO. 1016
NO. 1017
NO. 1018
NO. 1019
NO. 1020
NO. 1021
NO. 1022
NO. 1023
NO. 1024
NO. 1025
NO. 1026
NO. 1027
NO. 1028
NO. 1029
NO. 1030
NO. 1031
NO. 1032
NO. 1033
NO. 1034
NO. 1035
NO. 1036
NO. 1037
NO. 1038
NO. 1039
NO. 1040
NO. 1041
NO. 1042
NO. 1043
NO. 1044
NO. 1045
NO. 1046
NO. 1047
NO. 1048
NO. 1049
NO. 1050
NO. 1051
NO. 1052
NO. 1053
NO. 1054
NO. 1055
NO. 1056
NO. 1057
NO. 1058
NO. 1059
NO. 1060
NO. 1061
NO. 1062
NO. 1063
NO. 1064
NO. 1065
NO. 1066
NO. 1067
NO. 1068
NO. 1069
NO. 1070
NO. 1071
NO. 1072
NO. 1073
NO. 1074
NO. 1075
NO. 1076
NO. 1077
NO. 1078
NO. 1079
NO. 1080
NO. 1081
NO. 1082
NO. 1083
NO. 1084
NO. 1085
NO. 1086
NO. 1087
NO. 1088
NO. 1089
NO. 1090
NO. 1091
NO. 1092
NO. 1093
NO. 1094
NO. 1095
NO. 1096
NO. 1097
NO. 1098
NO. 1099
NO. 1100

* Replat Br
Lots 64-
Left in Br
201400

* Replat Br
Lots 80-81
Left in Br
A. Benne
2012-03

BC1C8-2