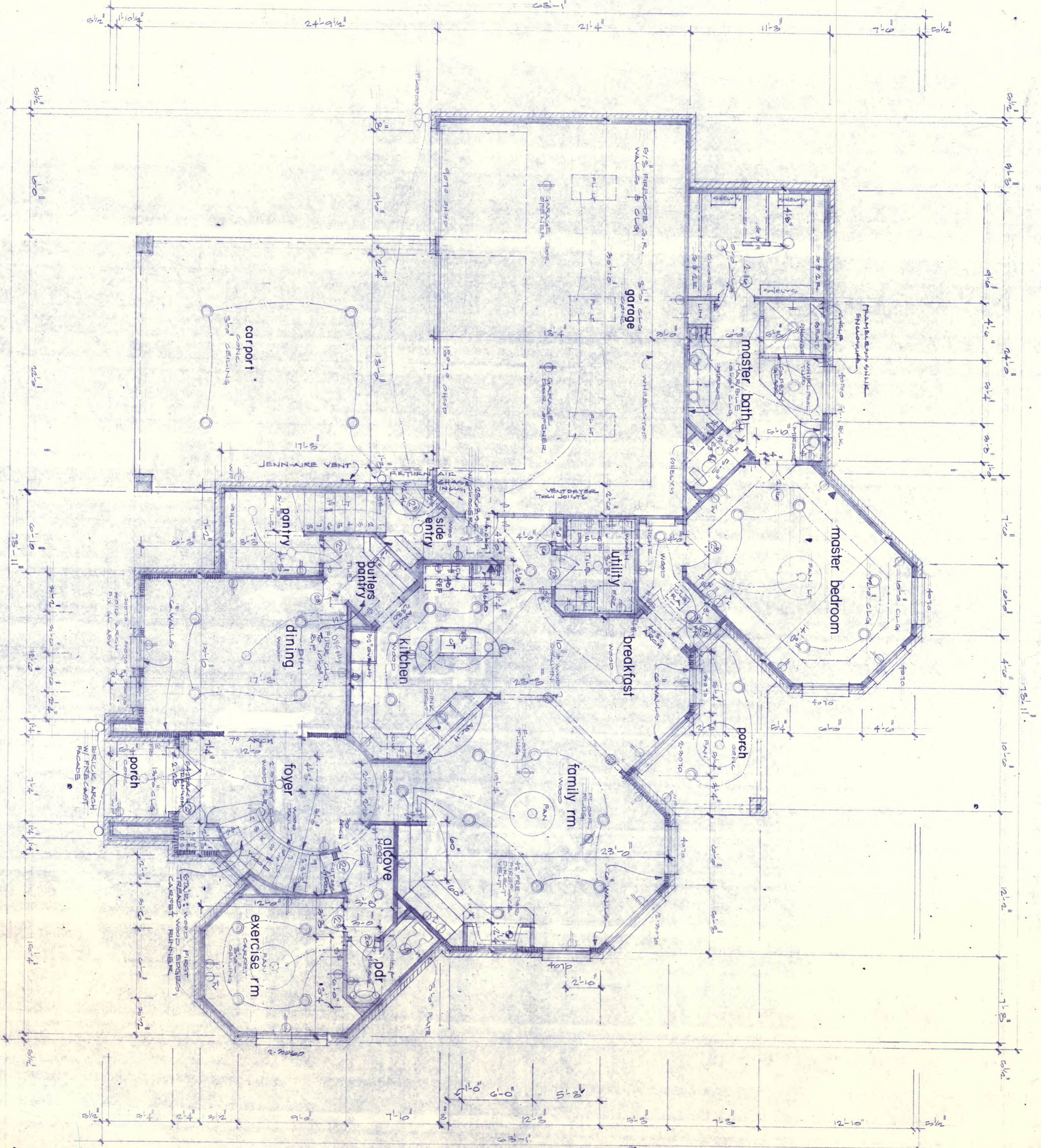


All ideas, designs, drawings, plans, and specifications are property of Houston Design Group, Inc. Purchaser's right is conditional and limited to a one-time use to construct a single project on the lot stated herein, and use is limited specifically to such property. The use or reproduction of these plans concerning any other construction is strictly prohibited without written permission of the designers. Written dimensions on these drawings shall have precedence over scaled dimensions. Contractors shall verify and be responsible for all dimensions and conditions on the job, and this office must be notified of any variations from the dimensions and conditions shown by these drawings. The owner and builder are responsible for reading, understanding, and acting upon all information contained in these plans including the final "typical details" sheet. We are neither structural engineers nor soils experts. Although structural information is indicated on these plans, you should have the structure reviewed by a registered engineer. Although every effort has been made to create an accurate set of plans, discrepancies and items requiring interpretation may be encountered. Please contact this office immediately upon discovery of a discrepancy or item requiring interpretation, so that we may assist you and aid in the design modification, if necessary. If changes are to be made during construction, mark them on this set of plans and return the plans to us for approval. We are not responsible for any problems or damages resulting from changes or modifications to the plans made without our written approval. If your plans do not include: (1) a site plan for the lot on which you are building produced by Houston Design Group, Inc., (2) our detail sheet, and (3) all of the number sheets produced by our office, then your plans are incomplete, and you should notify us immediately in writing, so that missing sheets may be supplied to you.

first floor plan



date 6-21-97 rev. 6-4-97 rev. 8-4-97 rev. 9-3-97 rev. 11-18-97 plan 4511 draw H.H. sheet 2 of 12

EXTERIOR WALLS @ 12" CLG

FOOTAGE	FOOTAGE
FINISH FLOOR	2485
SECOND FLOOR	1511
LIVING AREA	973
PORCH & CARPORT	125
BASE	507
TOTAL	5077

SQUARE FOOTAGE
Each subcontractor, builder, appraiser, architectural control, etc. is responsible for figuring the square footage of this plan as calculation methods vary widely from designer to designer.

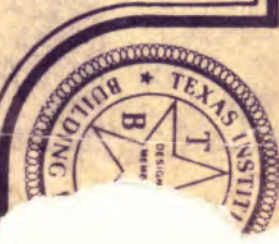
- SBC Section:**
- Stairs (Sec. 1108)
 - Masonry fireplaces (Sec. 804)
 - Prefab fireplaces (Sec. 804 and manufacturer's specs.)
 - Skylights (Sec. 2805)
 - Glass (Chapter 27)
 - Plumbing access panels (Sec. 905.2 & 905.3)

- BATH NOTES**
- Marble lavatories, drain and splash.
 - Full tile shower except where safety glass is shown.
 - Tile to 7'-0" above tubs.
 - 6" F.I. 110V outlets & vanities.
 - Commode clearance must be minimum of 15" from centerline to side wall.
 - Provide green board where tile is installed (not in ceiling).

- 12'-0" Ceiling height first floor / 9'-0" Ceiling height second floor.
- Carpet floor.
- Sheetrock walls and ceilings.
- Grease, drain and vent splash in kitchen, Barbecue drain and splash utility.
- Lightoller recessed lights model 11021C - 1105 or equal in insulated ceilings.
- Water heater in attic in pan with relief drain 1" drainline to outside, sitting on a wall.
- Plug no greater than 6" from open space, and plugs no greater than 4" at kitchen counter.
- Safety glass at all French doors, 6" or greater, windows adjacent to bathtub and shower enclosures as per chapter 27 SBC.
- Maximum spacing between electrical outlets 12".
- In accordance to Electrical Service Standards... All access to Electrical Meters shall not be blocked by fences, gates or walls.
- Aluminum frame windows with painted frames. Verify all sized and mill configurations with owner, carpenter prior to glassman placing order. Verify egress size also prior to order.
- 2 doors down 2' 8" doors up

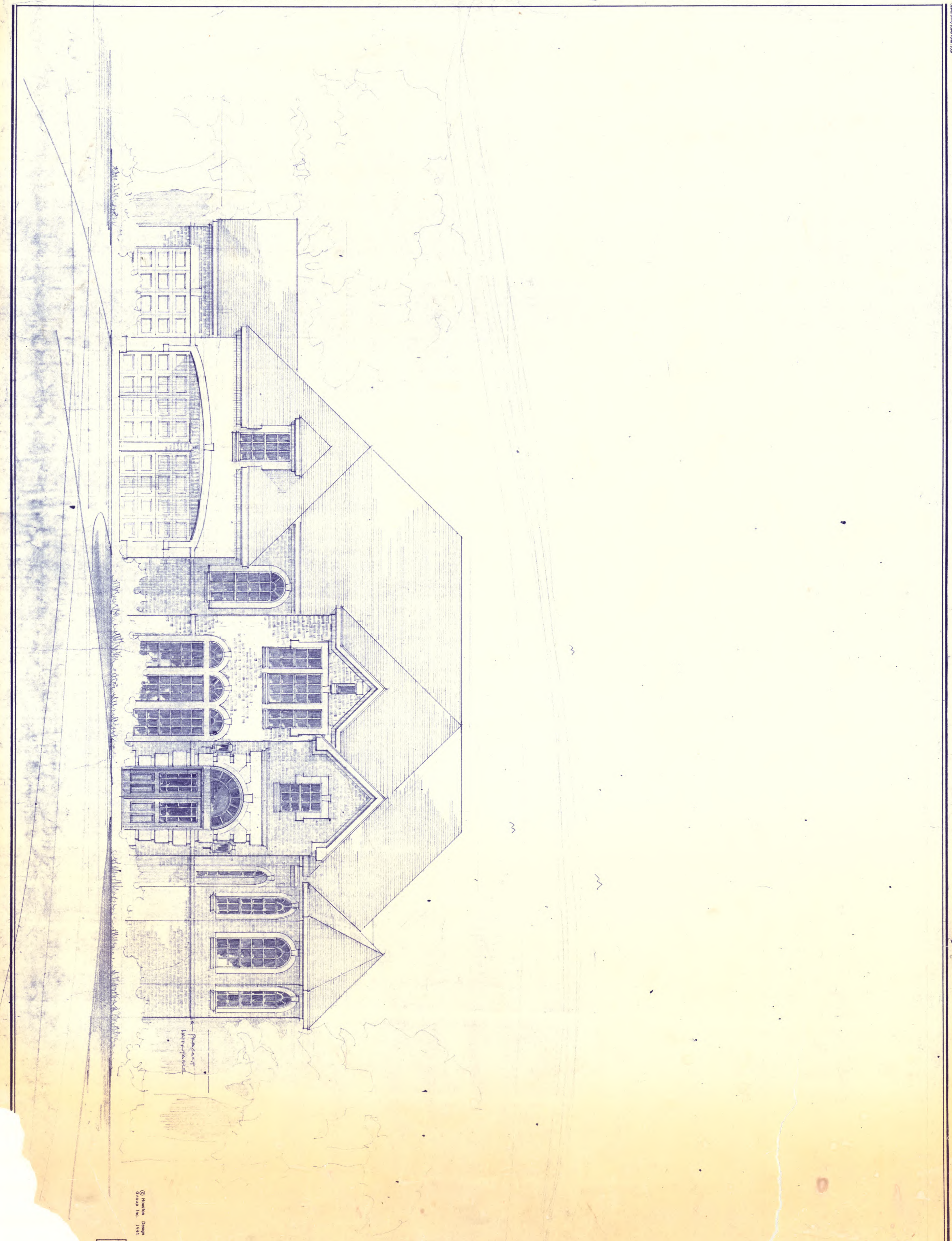


Houston Design Group Inc. 1987

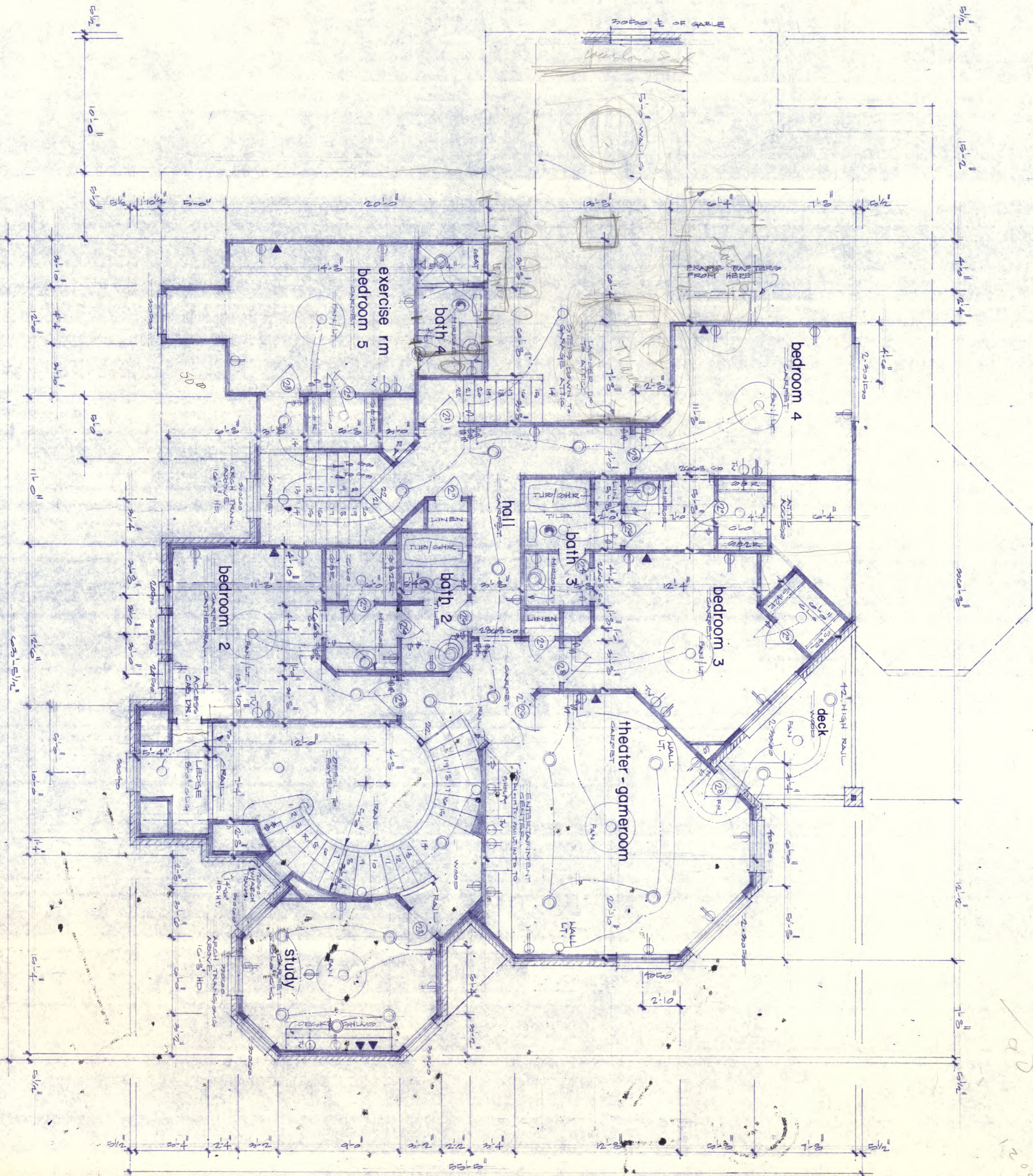


SUBDIVISION	PLAN NO.	BUILDER	STYLE	HOUSE SIZE	BEDROOMS DOWN	STUDY	FORMAL LIVING	GAMEROOM DN	GARAGE ATT.	DETACHED	RELATED PLANS	INVOICED
1 S. B. S.	4511	FUQUA ADAMS		WIDTH DEPTH	BEDROOMS UP	FAMILY	GAMEROOM UP	REAR VIEW	SWING IN	PORTA COCHERE		6-27-77 CHECKED

All ideas, designs, drawings, plans, and specifications are property of Houston Design Group, Inc. Purchaser's right is conditional and limited to a one-time use to construct a single project on the lot stated herein, and use is limited specifically to such property. The use or reproduction of these plans concerning any other construction is strictly prohibited without written permission of the designers. Written dimensions on these drawings shall have precedence over scaled dimensions. Contractors shall verify and be responsible for all dimensions and conditions on the job, and this office must be notified of any variations from the dimensions and conditions shown by these drawings. The owner and builder are responsible for reading, understanding, and acting upon all information contained in these plans including the final "typical details" sheet. We are neither structural engineers nor soils experts. Although structural information is indicated on these plans, you have the structure reviewed by a registered engineer. Although every effort has been made to create an accurate set of plans, discrepancies and items requiring interpretation may be encountered. Please contact this office immediately upon discovery of a discrepancy or item requiring interpretation, so that we may assist you and aid in the design modification, if necessary. If changes are to be made during construction, mark them on this set of plans and return the plans to us for approval. We are not responsible for any problems or damages resulting from changes or modifications to the plans made without our written approval. If your plans do not include: (1) a site plan for the lot on which you are building produced by Houston Design Group, Inc., (2) our detail sheet, and (3) all of the numbered sheets produced by our office, then your plans are incomplete, and you should notify us immediately in writing, so that missing sheets may be supplied to you.



All ideas, designs, drawings, plans, and specifications are property of Houston Design Group, Inc. Purchaser's right is conditional and limited to a one-time use to construct a single project on the lot stated herein, and use is limited specifically to such property. The use or reproduction of these plans concerning any other construction is strictly prohibited without written permission of the designers. Written dimensions on these drawings shall have precedence over scaled dimensions. Contractors shall verify and be responsible for all dimensions and conditions on the job, and this office must be notified of any variations from the dimensions and conditions shown by these drawings. The owner and builder are responsible for reading, understanding, and acting upon all information contained in these plans including the final "typical details" sheet. We are neither structural engineers nor soils experts. Although structural information is indicated on these plans, you should have the structure reviewed by a registered engineer. Although every effort has been made to create an accurate set of plans, discrepancies and items requiring interpretation may be encountered. Please contact this office immediately upon discovery of a discrepancy or item requiring interpretation, so that we may assist you and aid in the design modification, if necessary. If changes are to be made during construction, mark them on this set of plans and return the plans to us for approval. We are not responsible for any problems or damages resulting from changes or modifications to the plans made without our written approval. If your plans do not include: (1) a site plan for the lot on which you are building produced by Houston Design Group, Inc., (2) our detail sheet, and (3) all of the number sheets produced by our office, then your plans are incomplete, and you should notify us immediately in writing, so that missing sheets may be supplied to you.



second floor plan

SCALE 1/4" = 1'-0"

date	6-27-97
rev.	6-4-97
rev.	8-4-97
rev.	9-3-97
rev.	

plan 4511

draw HH

sheet 1 of 12



Houston Design Group Inc. 1987



Handwritten notes: 15'-0", 45'-0", 47'-0", 12'-0", 9'-0"