

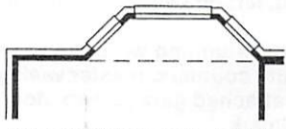
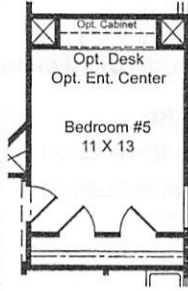
BRISTOL II

Floorplan Design

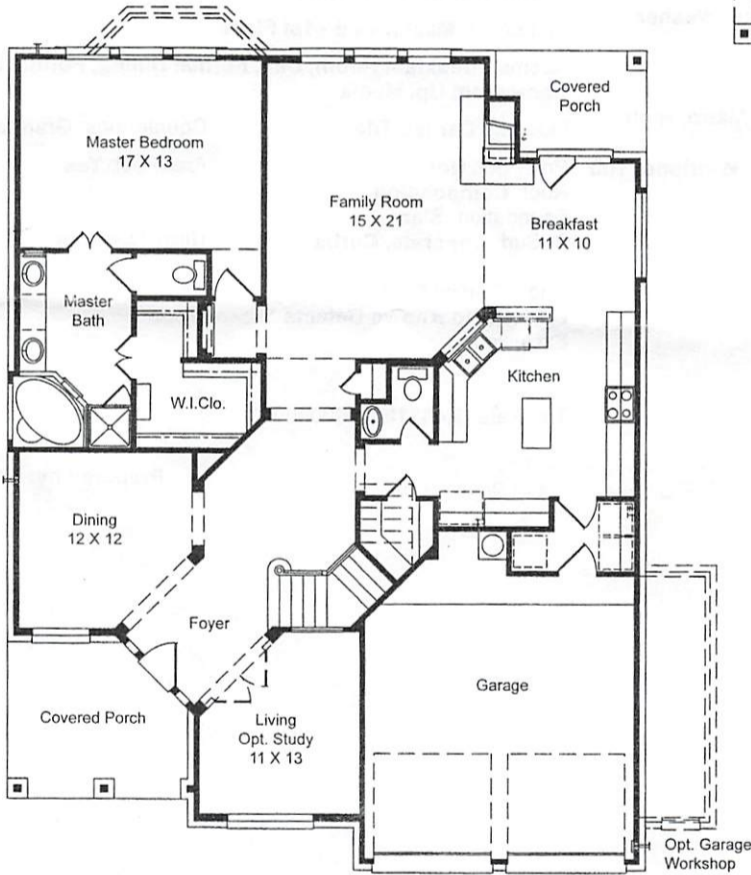
3,291 Square Feet

4 Bedrooms, 3.5 Baths

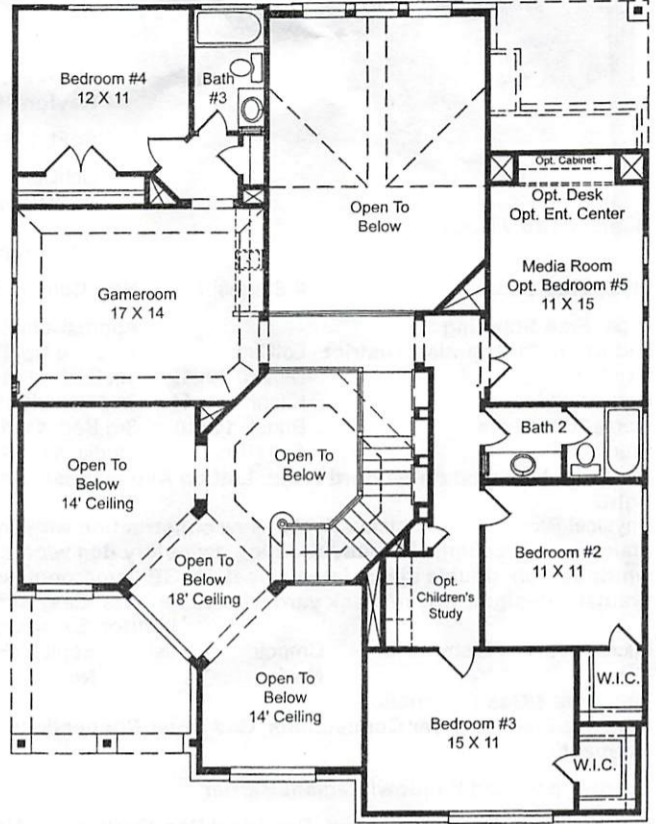
Dramatic Curved Staircase with
Lighted Art niches and Vaulted Ceilings
Media Room, Optional 5th Bedroom,
Optional 4th Bathroom



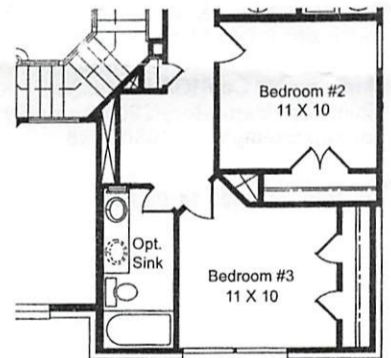
Optional Bay Window @ Master Bedroom



FIRST FLOOR



SECOND FLOOR



Optional Bath 4



IMPERIAL
Homes

IMPERIALHOMESTEXAS.COM



Architectural dimensions shown are nominal interior dimensions; room sizes, window placement and other dimensions may vary from these drawings. This brochure is for illustrative purposes; it is not part of a legal