

FRED EULE SURVEY  
A - 373

BROOKSHIRE TREE FARMS  
Vol. 646 Pg. 929 O.R.W.C.T.

HAROLD JOHN BRETFORD,  
ET AL.

Called 107,488 Ac. (Em "B")  
Vol. 531, Pg. 095 O.R.W.C.T.

8 T. C. R. R. CO. SUR. SECTION III  
A-172

HAROLD JOHN BRETFORD,  
ET AL.

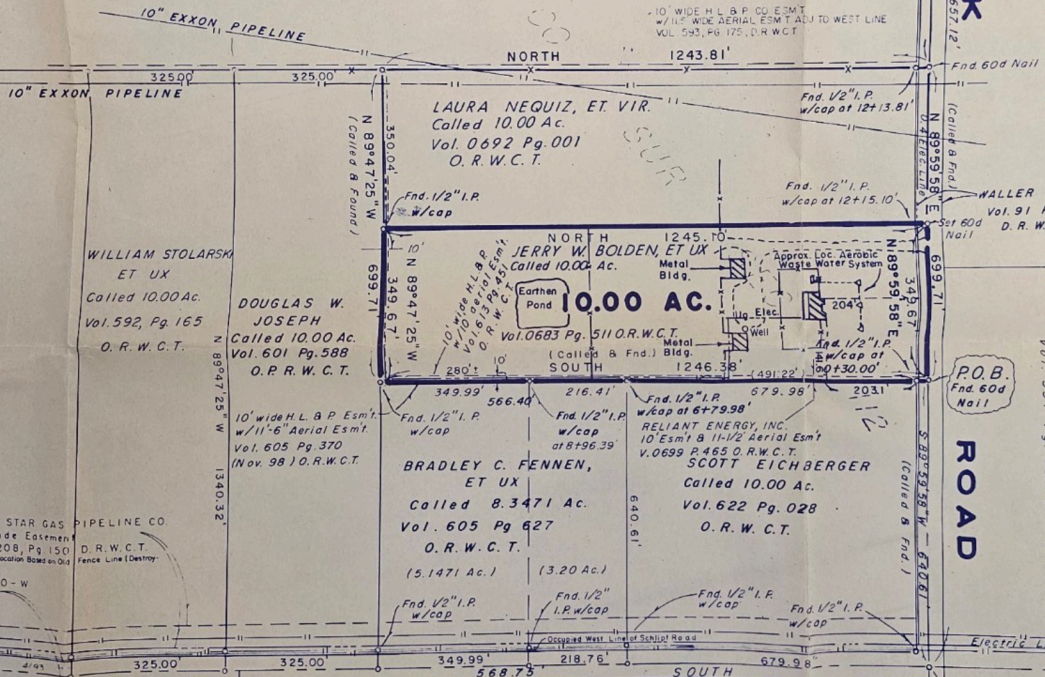
Called 107,488 Ac. (Em "B")  
Vol. 531 Pg. 095 O. R. W. C. T.

STOCKDICK ROAD

ROAD

P.O.B.  
End 60d Nail

Fnd. Boat Spike  
From which Fnd. 1/2"  
I. P. w/cap brs. 556°59'07" W  
50.00'



SCHLIPF ROAD

LONE STAR GAS PIPELINE CO.  
50' Wide Easement  
Vol. 208, Pg. 150 D.R.W.C.T.  
Approx. Location Based on Old  
Fence Line Destroyed

Waller County 30' R-O-W  
Pg. 551 D.R.W.C.T.

Gas Pipeline  
Oil Co. Pipeline

325.00 325.00 349.99' 568.75' 218.76' 679.98'