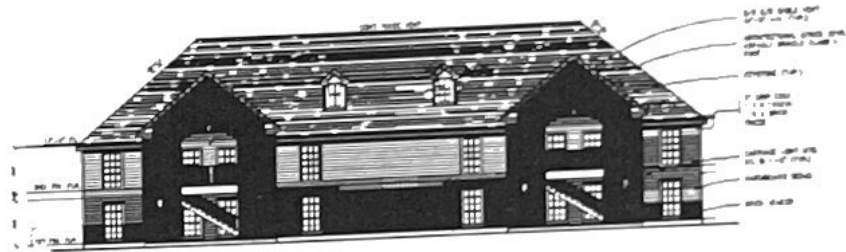
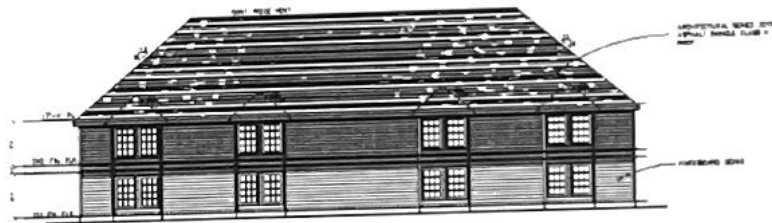


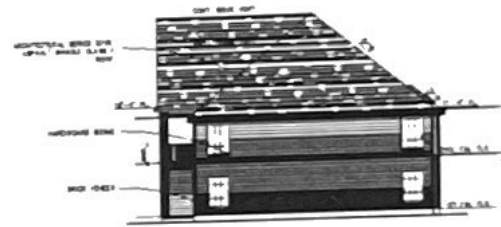
A3 BUILDING A LEFT SIDE ELEVATION  
1/8" = 1'-0"



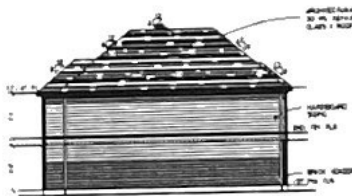
A5 BUILDING A FRONT ELEVATION  
1/8" = 1'-0"



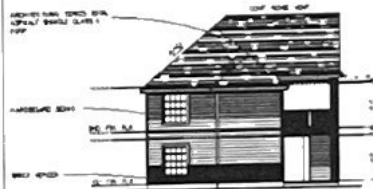
A2 BUILDING A REAR ELEVATION  
1/8" = 1'-0"



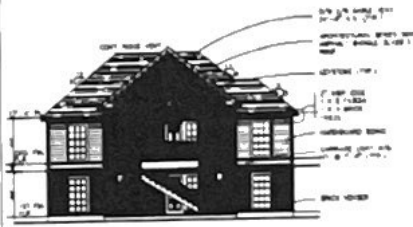
A7 BUILDING A RIGHT SIDE ELEVATION  
1/8" = 1'-0"



A1 BUILDING B REAR ELEVATION  
1/8" = 1'-0"



A4 BUILDING B SIDE ELEVATION  
1/8" = 1'-0"

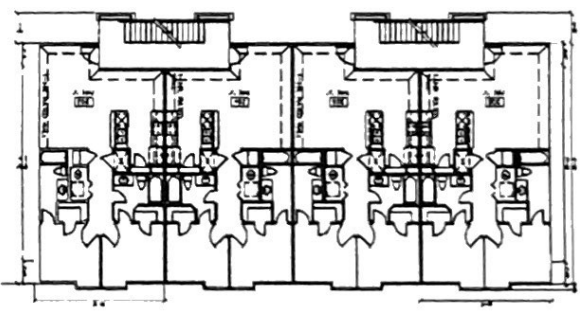
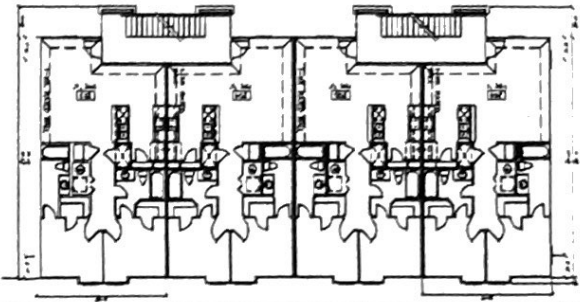


A6 BUILDING B FRONT ELEVATION  
1/8" = 1'-0"

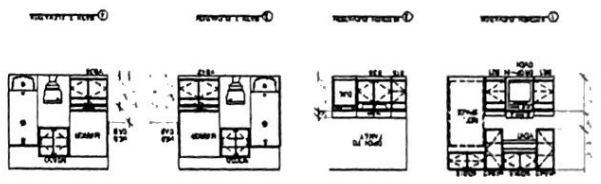


A8 BUILDING B SIDE ELEVATION  
1/8" = 1'-0"

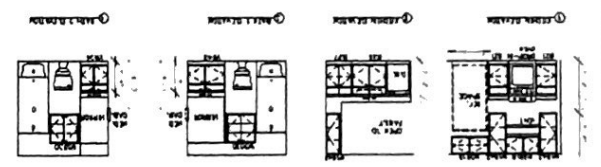
ROSALIE FLATS  
APARTMENT  
3813 ROSALIE STREET  
EXTERIOR  
ELEVATIONS



UNIT A



UNIT B



**DOOR AND FRAME SCHEDULE**

MARK	SIZE		SPEC	FINISH	NOTES	GLAZING	FRAME		HARDWARE	
	WT	HT					GRAB	SL	FACE LABOR LABEL	NET WT.

**FINISH SCHEDULE**

NO	FINISH	FLOOR		BASE		W. WALL		I. WALL		C. WALL		C. WALL		C. WALL		C. WALL		REMARKS
		WT	HT	WT	HT	WT	HT	WT	HT	WT	HT	WT	HT	WT	HT			
100																		
101																		
102																		
103																		
104																		
105																		
106																		
107																		
108																		
109																		
110																		
111																		
112																		
113																		
114																		
115																		
116																		
117																		
118																		
119																		
120																		

**WINDOW SCHEDULE**

MARK	SIZE		SPEC	NOTES	REMARKS	MATERIAL
	WT	HT				

**DIMENSION SCHEDULE LEGEND**

- MATERIAL**
- |   |   |
|---|---|
| A. CONCRETE                             | E. CERAMIC TILE                         |
| B. CARPET                               | F. STONEFRONT                           |
| C. 12" X 12" VINYL COMP. TILE           | G. RESULENT BASE - STRAIGHT             |
| D. GYPSUM BOARD                         | H. RESULENT BASE - CONED                |
| E. CERAMIC TILE                         | I. 2" X 2" SUSPENDED ACOUSTICAL CEILING |
| F. STONEFRONT                           | J. COPIED STRUCTURE                     |
| G. RESULENT BASE - STRAIGHT             | L. CORRUGATED METAL                     |
| H. RESULENT BASE - CONED                | M. PLASTIC LAMINATE                     |
| I. 2" X 2" SUSPENDED ACOUSTICAL CEILING |   |
| J. COPIED STRUCTURE                     |   |
| L. CORRUGATED METAL                     |   |
| M. PLASTIC LAMINATE                     |   |

