



**Bueker & Todd Architects, Inc.**  
 Architects • Planning • Consultants  
 20211 Orangeridge Blvd., Suite 205  
 Dallas, Texas 75280  
 (714) 387-4215 • (714) 342-2300  
 FAX (714) 387-1003

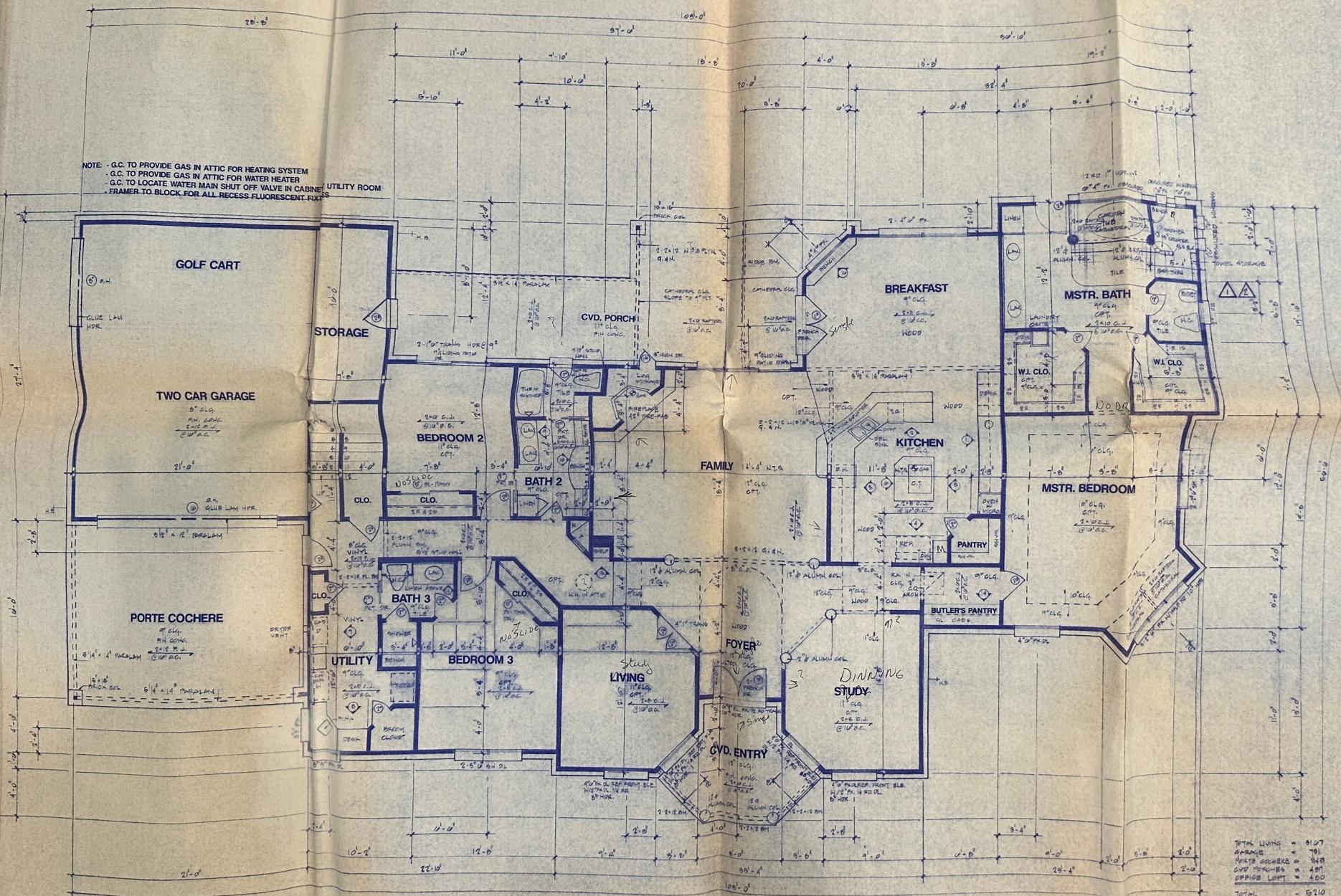
**DALRYMPLE RESIDENCE**

Project #	44100002
Date	01-18-98
Scale	1/8" = 1'-0"
Drawn By	LJP
Check By	LJP

Revisions	
▲	11-11-98
▲	12-02-98
▲	
▲	
▲	

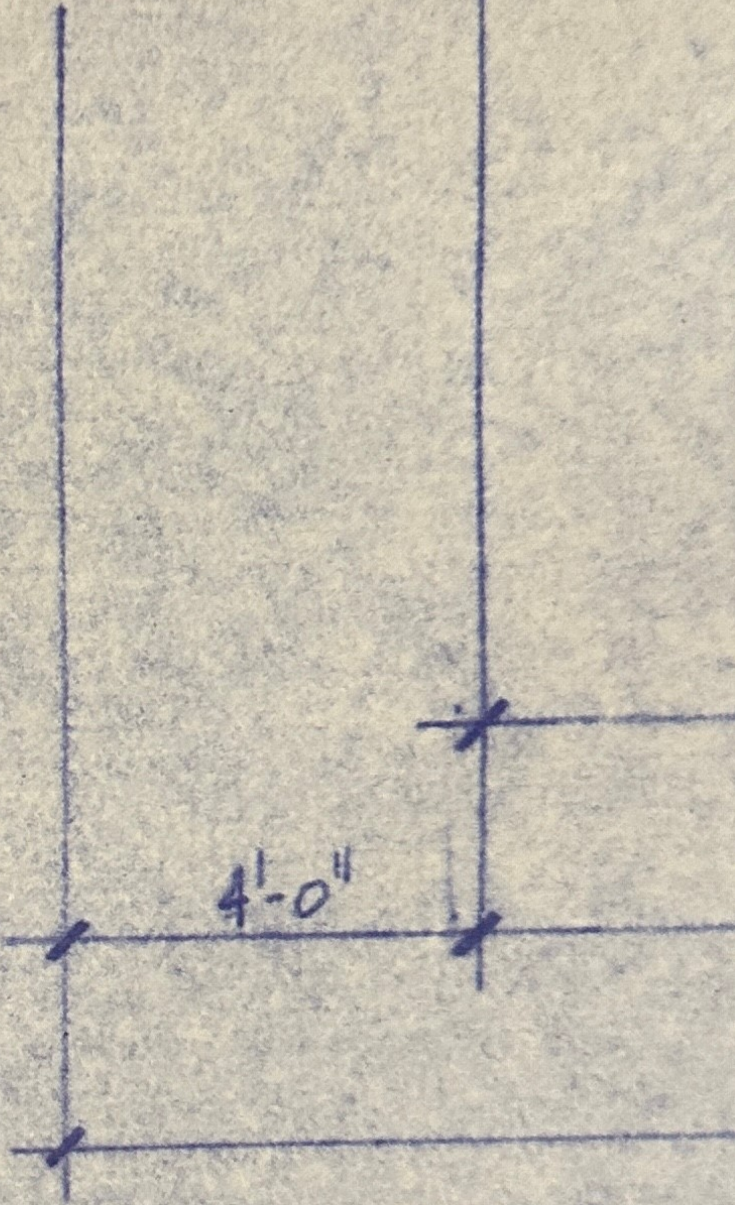
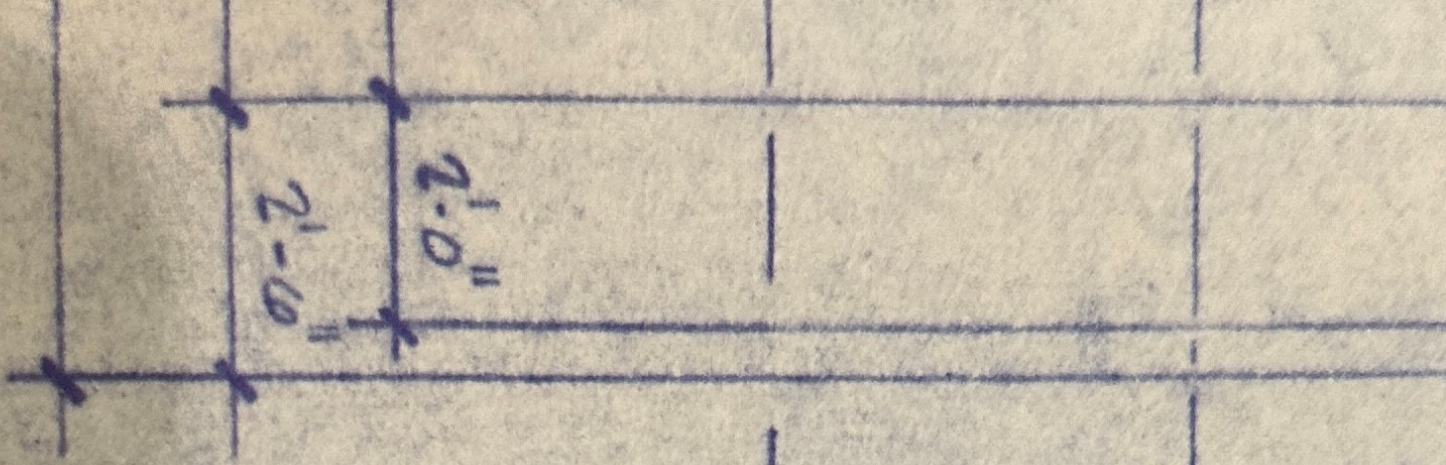
SHEET	
<b>A-4</b>	

NOTE: - G.C. TO PROVIDE GAS IN ATTIC FOR HEATING SYSTEM  
 - G.C. TO PROVIDE GAS IN ATTIC FOR WATER HEATER  
 - G.C. TO LOCATE WATER MAIN SHUT OFF VALVE IN CABINET UNDER UTILITY ROOM  
 - FRAMER TO BLOCK FOR ALL RECESS FLUORESCENT FIXTURES



TOTAL LIVING = 3107  
 GARAGE = 701  
 PORTE COCHERE = 248  
 C.V.D. PORCHES = 447  
 OFFICE LOFT = 400  
 TOTAL = 4803

FLOOR PLAN 1/4"



TOTAL LIVING	=	3107
Garage	=	781
Porche	=	345
CND PORCHES	=	487
OFFICE LOFT	=	480
<b>TOTAL</b>	=	<b>5210</b>

**OFFICE LOFT ADDENDUM 1/4"**

