

**52' SUMMIT SERIES**

*Welcome to the Strasburg*

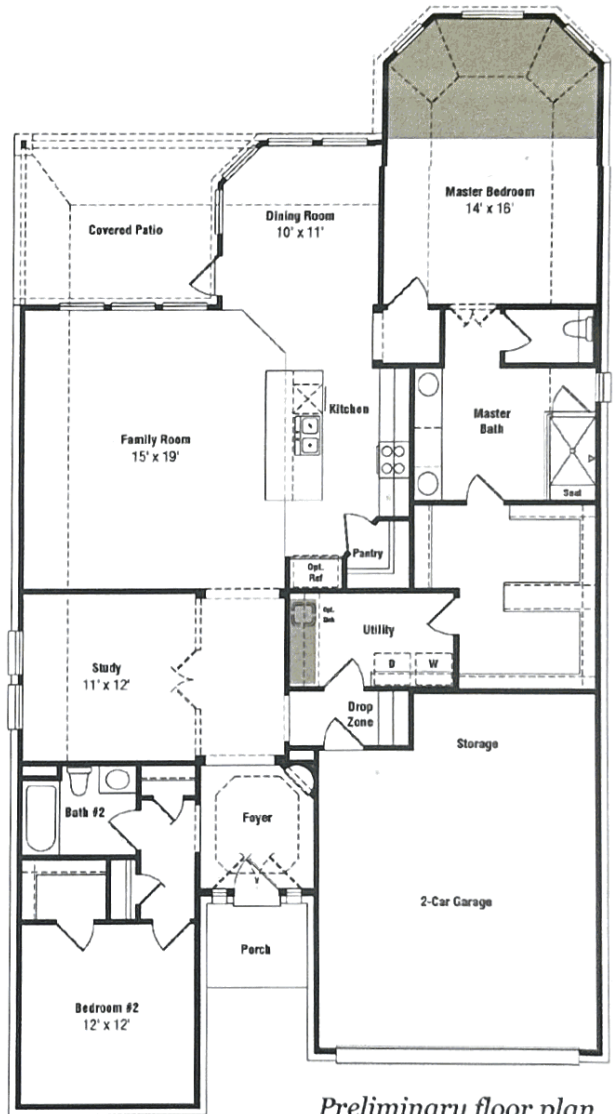


The Strasburg C furnished model home as shown features 1,910 sq. ft., 2 Bedrooms, 2 Baths

Shown with Master Bay Window and Optional Utility Room with Cabinetry and Granite.

The 52' Summit Series offers a collection of single-story home plans ranging from 1,933 sq. ft. — 2,234+ sq. ft. with 2 - 4 Bedrooms, 2 - 3 Baths, and 2 - 2+ Car Garage.

*Please see the Strasburg floor plan handout to see a full list of structural options available on this plan.*



106 Beautyberry Court, Montgomery, Texas 77316 • 281.670.1007

**BONTERRA55.COM**

*Life more than I imagined.®*



AN INSPIRED LIVING EXPERIENCE FROM **TaylorMorrison.**

Offer void where prohibited or otherwise restricted by law. All information (including, but not limited to prices, availability, incentives, floor plans, site plans, features, standards and options, assessments and fees, planned amenities, programs, conceptual artists' renderings and community development plans) is not guaranteed and remains subject to change or delay without notice. Maps and plans are not to scale and all dimensions are approximate. Photos and descriptions of any planned improvements, features or amenities are not an actual representation and are for illustration purposes only that remain subject to change. This material shall not constitute a valid offer in any state where prior registration is required or if void by law. At least one resident of household must be 55 or better, and additional restrictions apply. Some residents may be younger than 55 and no one under 19 in permanent residency. Please see a Taylor Morrison Sales Associate for details and visit [www.taylormorrison.com](http://www.taylormorrison.com) for additional disclaimers. © July 2013, Taylor Morrison of Texas, Inc. All rights reserved.