


20107 Devereux Court, Nottingham Country, Katy, Harris County, Texas, United States, 77450



Property Summary

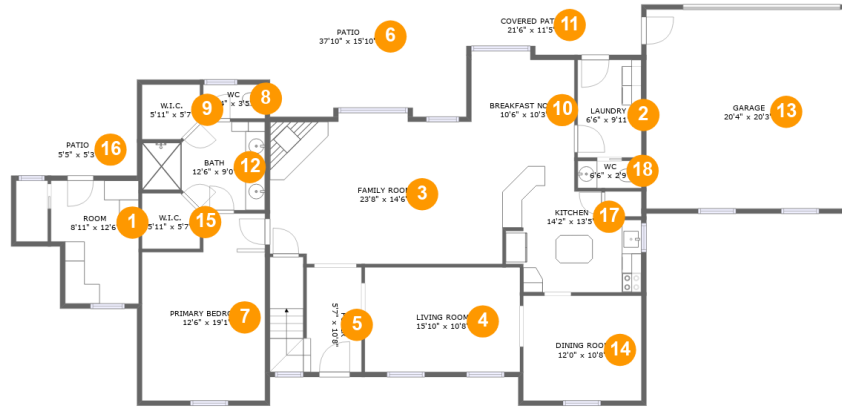
 **1** garages  **4** bedrooms  **2** bathrooms  **1** half baths

 **2** floors

 **2,365** Gross Living Area sqft

 **3,608** total sqft

20107 Devereux Court, Nottingham Country, Katy, Harris County, Texas, United States, 77450



Room Dimensions

Floor 1

Total sqft: 2722

Living area: 1616

#	Room name	Dimensions	Area (sqft)	Counted as Living Area
1	Room	8'11" x 12'6"	103 sq. ft	No
2	Laundry	6'6" x 9'11"	65 sq. ft	Yes
3	Family Room	23'8" x 14'6"	328 sq. ft	Yes
4	Living Room	15'10" x 10'8"	169 sq. ft	Yes
5	Foyer	5'7" x 10'8"	101 sq. ft	Yes
6	Patio	37'10" x 15'10"	354 sq. ft	No
7	Primary Bedroom	12'6" x 19'1"	214 sq. ft	Yes
8	Wc	6'4" x 3'5"	22 sq. ft	Yes
9	W.i.c.	5'11" x 5'7"	31 sq. ft	Yes
10	Breakfast Nook	10'6" x 10'3"	104 sq. ft	Yes
11	Covered Patio	21'6" x 11'5"	134 sq. ft	No

Scan captured on Wed, 24 Jul 2024 18:01:22 GMT

Information is calculated by CubiCasa technology; deemed highly reliable but not guaranteed.

**20107 Devereux Court, Nottingham Country,
Katy, Harris County, Texas, United States, 77450**

#	Room name	Dimensions	Area (sqft)	Counted as Living Area
12	Bath	12'6" x 9'0"	92 sq. ft	Yes
13	Garage	20'4" x 20'3"	412 sq. ft	No
14	Dining Room	12'0" x 10'8"	129 sq. ft	Yes
15	W.i.c.	5'11" x 5'7"	31 sq. ft	Yes
16	Patio	5'5" x 5'3"	29 sq. ft	No
17	Kitchen	14'2" x 13'5"	151 sq. ft	Yes
18	Wc	6'6" x 2'9"	18 sq. ft	Yes

20107 Devereux Court, Nottingham Country, Katy, Harris County, Texas, United States, 77450



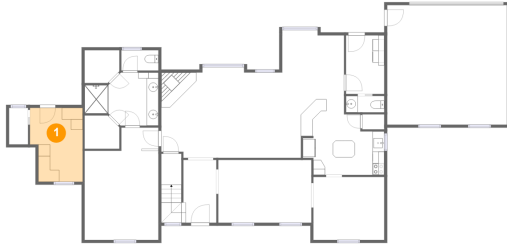
Room Dimensions

Floor 2**Total sqft: 886****Living area: 749**

#	Room name	Dimensions	Area (sqft)	Counted as Living Area
19	Hall	8'0" x 15'10"	126 sq. ft	No
20	Bedroom	13'7" x 11'8"	160 sq. ft	Yes
21	Hall	13'5" x 6'1"	57 sq. ft	Yes
22	Bedroom	12'8" x 11'0"	140 sq. ft	Yes
23	Bedroom	12'2" x 11'4"	138 sq. ft	Yes
24	Bath	8'0" x 6'6"	52 sq. ft	Yes

20107 Devereux Court, Nottingham Country, Katy, Harris County, Texas, United States, 77450

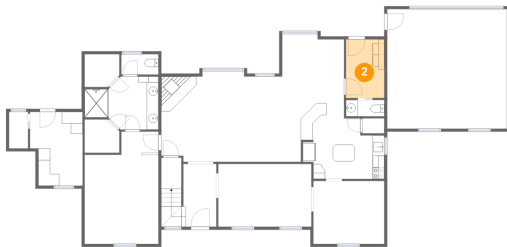
1 Floor 1 - Room



Dimensions: 8'11" x 12'6"
Area: 103 sq. ft
Counted as Living Area: No

Heated: Yes
Finished: Yes
Enclosed: Yes
Contiguous: No
Permitted: Yes
Wet Space: No
Addition: No
Conversion: No

2 Floor 1 - Laundry



Dimensions: 6'6" x 9'11"
Area: 65 sq. ft
Counted as Living Area:
Yes

Heated: Yes
Finished: Yes
Enclosed: Yes
Contiguous:
Yes
Permitted: Yes
Wet Space: No
Addition: No
Conversion: No

20107 Devereux Court, Nottingham Country, Katy, Harris County, Texas, United States, 77450

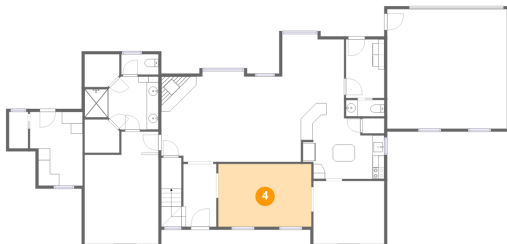
3 Floor 1 - Family Room



Dimensions: 23'8" x 14'6"
Area: 328 sq. ft
Counted as Living Area:
Yes

Heated: Yes
Finished: Yes
Enclosed: Yes
Contiguous:
Yes
Permitted: Yes
Wet Space: No
Addition: No
Conversion: No

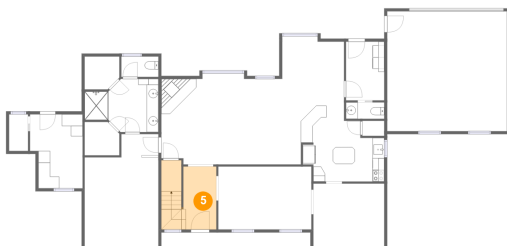
4 Floor 1 - Living Room



Dimensions: 15'10" x 10'8"
Area: 169 sq. ft
Counted as Living Area:
Yes

Heated: Yes
Finished: Yes
Enclosed: Yes
Contiguous:
Yes
Permitted: Yes
Wet Space: No
Addition: No
Conversion: No

5 Floor 1 - Foyer

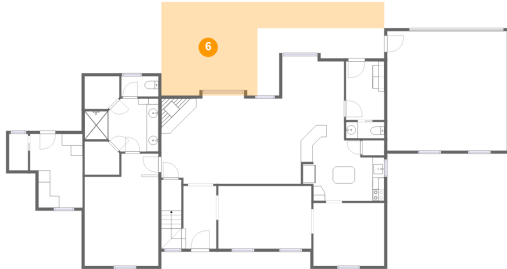


Dimensions: 5'7" x 10'8"
Area: 101 sq. ft
Counted as Living Area:
Yes

Heated: Yes
Finished: Yes
Enclosed: Yes
Contiguous:
Yes
Permitted: Yes
Wet Space: No
Addition: No
Conversion: No

20107 Devereux Court, Nottingham Country, Katy, Harris County, Texas, United States, 77450

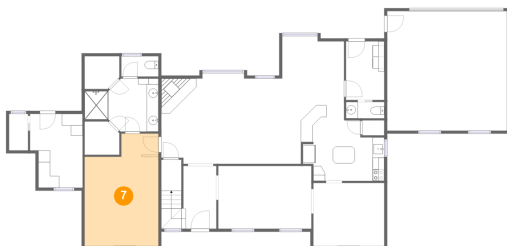
6 Floor 1 - Patio



Dimensions: 37'10" x 15'10"
Area: 354 sq. ft
Counted as Living Area: No

Heated: No
Finished: Yes
Enclosed: No
Contiguous: Yes
Permitted: Yes
Wet Space: No
Addition: No
Conversion: No

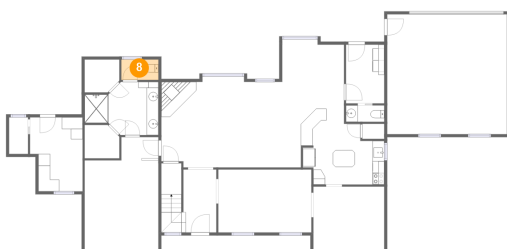
7 Floor 1 - Primary Bedroom



Dimensions: 12'6" x 19'1"
Area: 214 sq. ft
Counted as Living Area:
Yes

Heated: Yes
Finished: Yes
Enclosed: Yes
Contiguous:
Yes
Permitted: Yes
Wet Space: No
Addition: No
Conversion: No

8 Floor 1 - Wc



Dimensions: 6'4" x 3'5"
Area: 22 sq. ft
Counted as Living Area:
Yes

Heated: Yes
Finished: Yes
Enclosed: Yes
Contiguous:
Yes
Permitted: Yes
Wet Space: Yes
Addition: No
Conversion: No

20107 Devereux Court, Nottingham Country, Katy, Harris County, Texas, United States, 77450

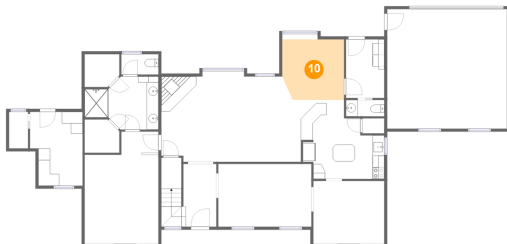
9 Floor 1 - W.i.c.



Dimensions: 5'11" x 5'7"
Area: 31 sq. ft
Counted as Living Area:
Yes

Heated: Yes
Finished: Yes
Enclosed: Yes
Contiguous:
Yes
Permitted: Yes
Wet Space: No
Addition: No
Conversion: No

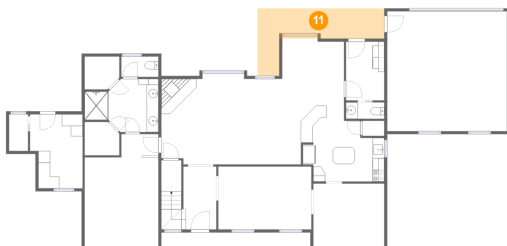
10 Floor 1 - Breakfast Nook



Dimensions: 10'6" x 10'3"
Area: 104 sq. ft
Counted as Living Area:
Yes

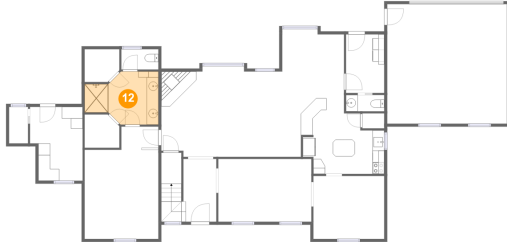
Heated: Yes
Finished: Yes
Enclosed: Yes
Contiguous:
Yes
Permitted: Yes
Wet Space: No
Addition: No
Conversion: No

11 Floor 1 - Covered Patio



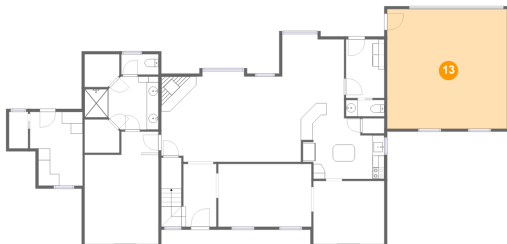
Dimensions: 21'6" x 11'5"
Area: 134 sq. ft
Counted as Living Area: No

Heated: No
Finished: Yes
Enclosed: No
Contiguous: Yes
Permitted: Yes
Wet Space: No
Addition: No
Conversion: No

**20107 Devereux Court, Nottingham Country,
Katy, Harris County, Texas, United States, 77450****12 Floor 1 - Bath**

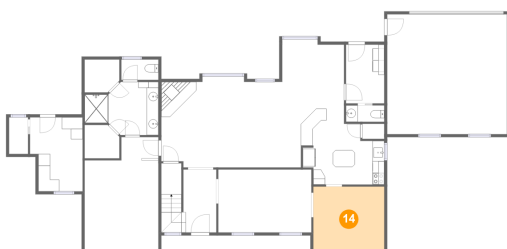
Dimensions: 12'6" x 9'0"
Area: 92 sq. ft
Counted as Living Area:
Yes

Heated: Yes
Finished: Yes
Enclosed: Yes
Contiguous:
Yes
Permitted: Yes
Wet Space: Yes
Addition: No
Conversion: No

13 Floor 1 - Garage

Dimensions: 20'4" x 20'3"
Area: 412 sq. ft
Counted as Living Area: No

Heated: No
Finished: No
Enclosed: Yes
Contiguous: Yes
Permitted: Yes
Wet Space: No
Addition: No
Conversion: No

14 Floor 1 - Dining Room

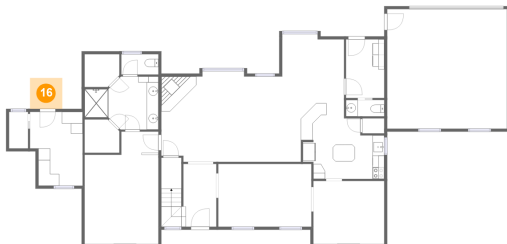
Dimensions: 12'0" x 10'8"
Area: 129 sq. ft
Counted as Living Area:
Yes

Heated: Yes
Finished: Yes
Enclosed: Yes
Contiguous:
Yes
Permitted: Yes
Wet Space: No
Addition: No
Conversion: No

**20107 Devereux Court, Nottingham Country,
Katy, Harris County, Texas, United States, 77450****15 Floor 1 - W.i.c.**

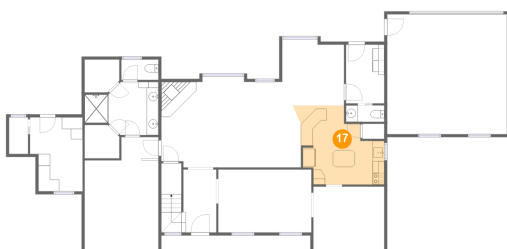
Dimensions: 5'11" x 5'7"
Area: 31 sq. ft
Counted as Living Area:
Yes

Heated: Yes
Finished: Yes
Enclosed: Yes
Contiguous:
Yes
Permitted: Yes
Wet Space: No
Addition: No
Conversion: No

16 Floor 1 - Patio

Dimensions: 5'5" x 5'3"
Area: 29 sq. ft
Counted as Living Area: No

Heated: No
Finished: Yes
Enclosed: No
Contiguous: Yes
Permitted: Yes
Wet Space: No
Addition: No
Conversion: No

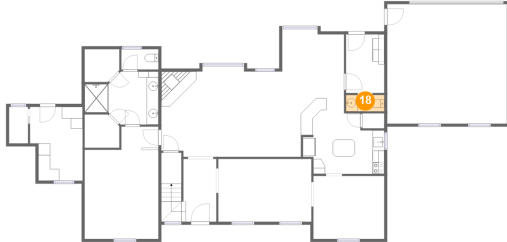
17 Floor 1 - Kitchen

Dimensions: 14'2" x 13'5"
Area: 151 sq. ft
Counted as Living Area:
Yes

Heated: Yes
Finished: Yes
Enclosed: Yes
Contiguous:
Yes
Permitted: Yes
Wet Space: No
Addition: No
Conversion: No

20107 Devereux Court, Nottingham Country, Katy, Harris County, Texas, United States, 77450

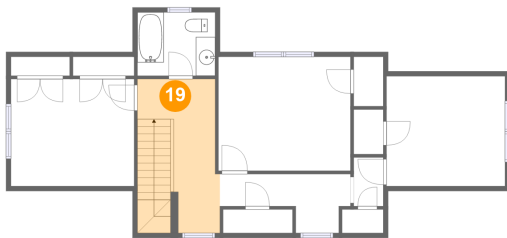
18 Floor 1 - Wc



Dimensions: 6'6" x 2'9"
Area: 18 sq. ft
Counted as Living Area:
Yes

Heated: Yes
Finished: Yes
Enclosed: Yes
Contiguous:
Yes
Permitted: Yes
Wet Space: Yes
Addition: No
Conversion: No

19 Floor 2 - Hall



Dimensions: 8'0" x 15'10"
Area: 126 sq. ft
Counted as Living Area: No

Heated: Yes
Finished: Yes
Enclosed: Yes
Contiguous: Yes
Permitted: Yes
Wet Space: No
Addition: No
Conversion: No

20 Floor 2 - Bedroom



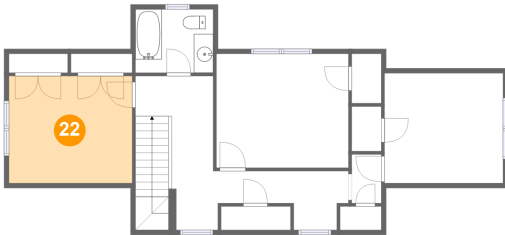
Dimensions: 13'7" x 11'8"
Area: 160 sq. ft
Counted as Living Area:
Yes

Heated: Yes
Finished: Yes
Enclosed: Yes
Contiguous:
Yes
Permitted: Yes
Wet Space: No
Addition: No
Conversion: No

**20107 Devereux Court, Nottingham Country,
Katy, Harris County, Texas, United States, 77450****21 Floor 2 - Hall**

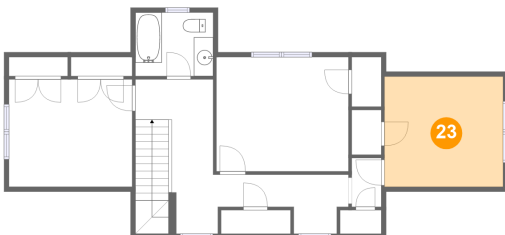
Dimensions: 13'5" x 6'1"
Area: 57 sq. ft
Counted as Living Area:
Yes

Heated: Yes
Finished: Yes
Enclosed: Yes
Contiguous:
Yes
Permitted: Yes
Wet Space: No
Addition: No
Conversion: No

22 Floor 2 - Bedroom

Dimensions: 12'8" x 11'0"
Area: 140 sq. ft
Counted as Living Area:
Yes

Heated: Yes
Finished: Yes
Enclosed: Yes
Contiguous:
Yes
Permitted: Yes
Wet Space: No
Addition: No
Conversion: No

23 Floor 2 - Bedroom

Dimensions: 12'2" x 11'4"
Area: 138 sq. ft
Counted as Living Area:
Yes

Heated: Yes
Finished: Yes
Enclosed: Yes
Contiguous:
Yes
Permitted: Yes
Wet Space: No
Addition: No
Conversion: No

20107 Devereux Court, Nottingham Country, Katy, Harris County, Texas, United States, 77450

24 Floor 2 - Bath



Dimensions: 8'0" x 6'6"
Area: 52 sq. ft
Counted as Living Area:
Yes

Heated: Yes
Finished: Yes
Enclosed: Yes
Contiguous:
Yes
Permitted: Yes
Wet Space: Yes
Addition: No
Conversion: No