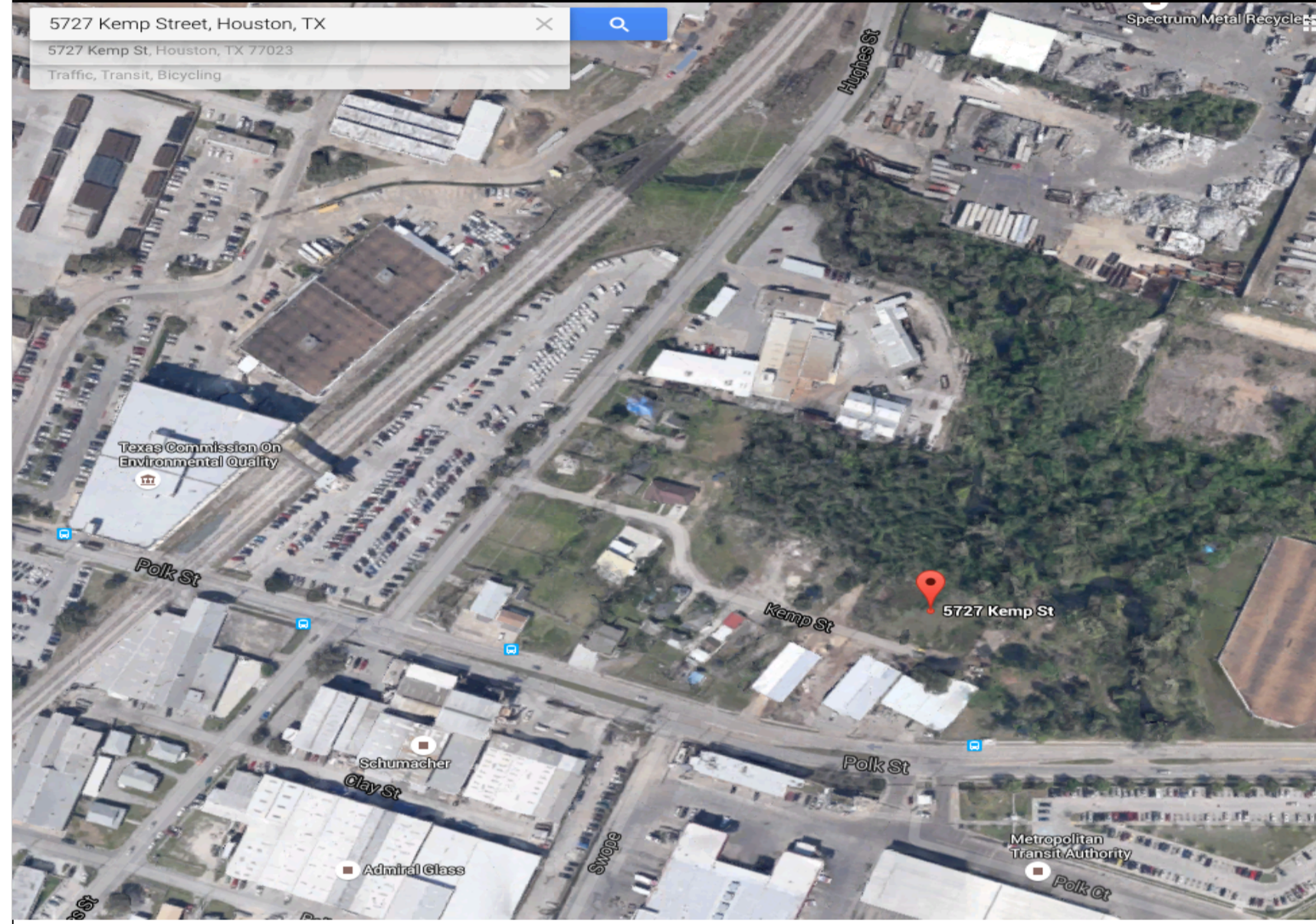


STEVEN | ALLEN | DESIGNS

5727 Kemp St., HOUSTON, TX

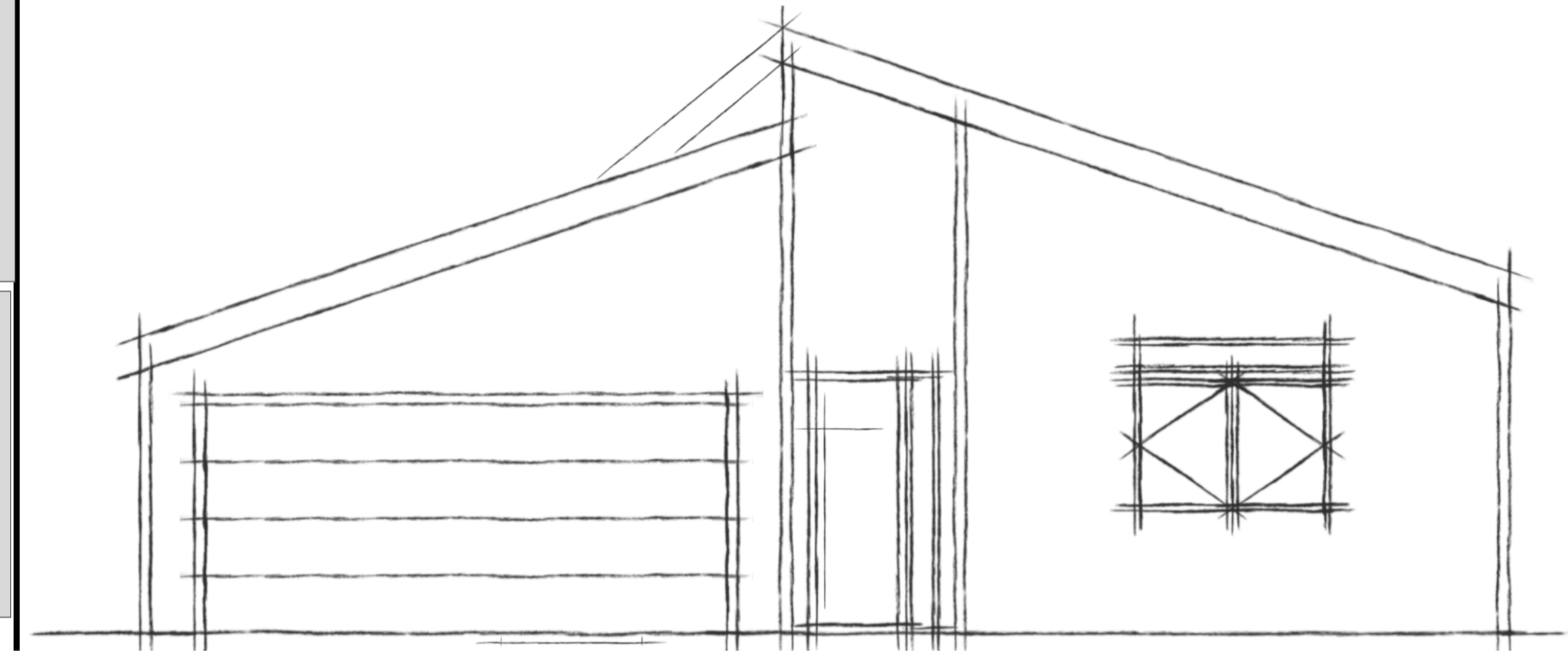


SCHEDULES

Door Schedule										
Mark	Size	Type	Type	Divided Lite	Swing	Make	Hardware Color	Jamb	Jamb Size	Count
4	2080	Swing	Hollow Core	N/A	RH	TBD	Brass	Regular	3.5	1
6	2480	Swing	Hollow Core	N/A	RH	TBD	Brass	Regular	3.5	1
9	2880	Swing	Hollow Core	N/A	LH	TBD	Brass	Regular	3.5	2
10	2880	Swing	Hollow Core	N/A	RH	TBD	Brass	Regular	3.5	2
14	OFFICE BARN	BARN	TBD	N/A	N/A	TBD	TBD	N/A	N/A	1
15	4880 (DBL 24)	Swing	Hollow Core	N/A	DBL	TBD	Brass	Regular	3.5	1
16	3080 (DBL 16)	Swing	Hollow Core	N/A	DBL	TBD	Brass	Regular	3.5	3
23	4080 (DBL 20)	BI-PASS	Hollow Core	N/A	BI-PASS	TBD	Brass	Regular	3.5	2
29	FRONT	Swing	TBD	Side Lite	LH	TBD	Brass	Regular	3.5	1
30	REAR DOORS	SLIDING	VINYL	1-LITE	SLIDE	AMSCO - STUDIO	WHITE	Regular	3.5	3
31	MASTER BATH	SLIDING	VINYL	1-LITE	SLIDE	AMSCO - STUDIO	WHITE	Regular	3.5	1
33	GARAGE SERVICE	Swing	Metal	N/A	RH	Mod. WS. Thru-TBD	Brass	Regular	3.5	1
34	GARAGE - FRONT	Overhead	See Make	N/A		TBD	n/a	n/a	3.5	1
35	GARAGE - REAR	Overhead	See Make	N/A		TBD	n/a	n/a	3.5	1
37	ATTIC 1 - 2850	Swing	Metal	N/A	LH	WS. Thru-AI 41USH	Brass	Regular	3.5	1

TOTAL DOORS: 22

Window Schedule									
Mark	Size	Type	Brand	Divide Lite	Opening	Color	Hardware Color	Glass	Count
1	6040	Vinyl	Amco-Studio	1-Line	CS/FX	White	White	Low-E	1
2	6060	Vinyl	Amco-Studio	1-Line	CS/FX	White	White	Low-E	1
3	6010	Vinyl	Amco-Studio	1-Line	FX	White	White	Low-E	5
4	2850	Vinyl	Amco-Studio	1-Line	CS	White	White	Low-E	2
5	6060	Vinyl	Amco-Studio	1-Line	CS/FX	White	White	Low-E	1
6	4010	Vinyl	Amco-Studio	1-Line	FX	White	White	Low-E	2
7	2040	Vinyl	Amco-Studio	1-Line	CS	White	White	Low-E	1
8	4040	Vinyl	Amco-Studio	1-Line	CS/FX	White	White	Low-E	1



SQUARE FOOTAGE:

EXISTING	ADDITION	NEW CONSTRUCTION TOTAL	
SLAB	SLAB	SLAB	2,380 SQFT
1ST FLOOR LIVING	1ST FLOOR LIVING (PORCH ENCLOSURE)	1ST FLOOR LIVING	1,915 SQFT
2ND FLOOR LIVING	2ND FLOOR LIVING	2ND FLOOR LIVING	173 SQFT
GARAGE / STORAGE	GARAGE / STORAGE	GARAGE	440 SQFT
ATTACHED PORTE COCHERE	DETACHED PORTE COCHERE & STORAGE	DETACHED PORTE COCHERE & STORAGE	
FRONT PORCH	FRONT PORCH	FRONT PORCH	25 SQFT
BACK PORCH	BACK PORCH	BACK PORCH/DECK	215 SQFT
FRONT BALCONY	FRONT BALCONY	FRONT BALCONY	
BACK BALCONY	BACK BALCONY	BACK BALCONY	
TOTAL PORCH/BALCONY	TOTAL PORCH/BALCONY	TOTAL LIVING	2,088 SQFT
TOTAL FRAME	TOTAL FRAME	TOTAL FRAME	2,768 SQFT

INDEX OF DRAWINGS

1	A 0.0	Cover Page & Schedules
2	A 0.1	Notes - N/A
3	A 1.0	Site Plans - 1st Floor
4	A 1.1	Site Plans - 2nd Floor
5	A 1.2	Demolition Plans
6	A 1.3	Existing Floor Plan
7	A 1.4	1st Floor Plan
8	A 2.0	1st Floor Electrical Plan
9	A 3.0	Existing Elevations
10	A 3.1	Proposed Elevations
11	A 3.3	Roof Elevations
12	A 4.0	Interior Elevations - Kitchen
13	A 4.1	Interior Elevations - Misc
14		
15		
16		
17		
18		
19		
20		
21		
22		
23		

PLAN REVISIONS & SUBMITTALS

1	08/17/15	Design Contract Signed
2	08/25/15	Preliminary Plan & Review Complete
3		Preliminary Meeting Adjustments
4		Engineering Meet #1
5		Engineering Site Visit #2
6		Engineering Plans Complete
7		Plans Complete
8		City of Houston Plan Submittal
9		
10		
11		
12		
13		
14		
15		...
16		
17		
18		...
19		...
20		...
21		...
22		...
23		...

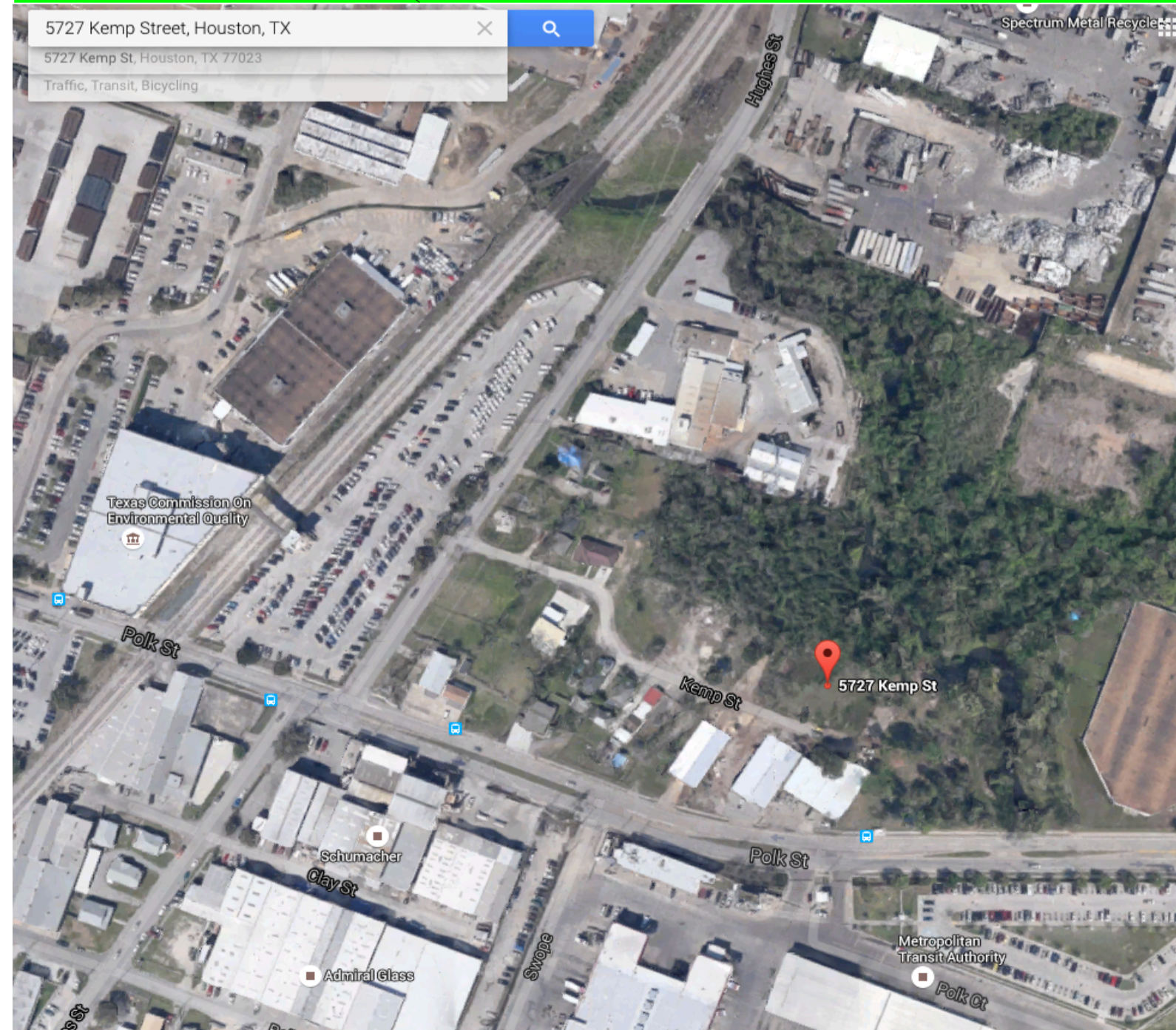
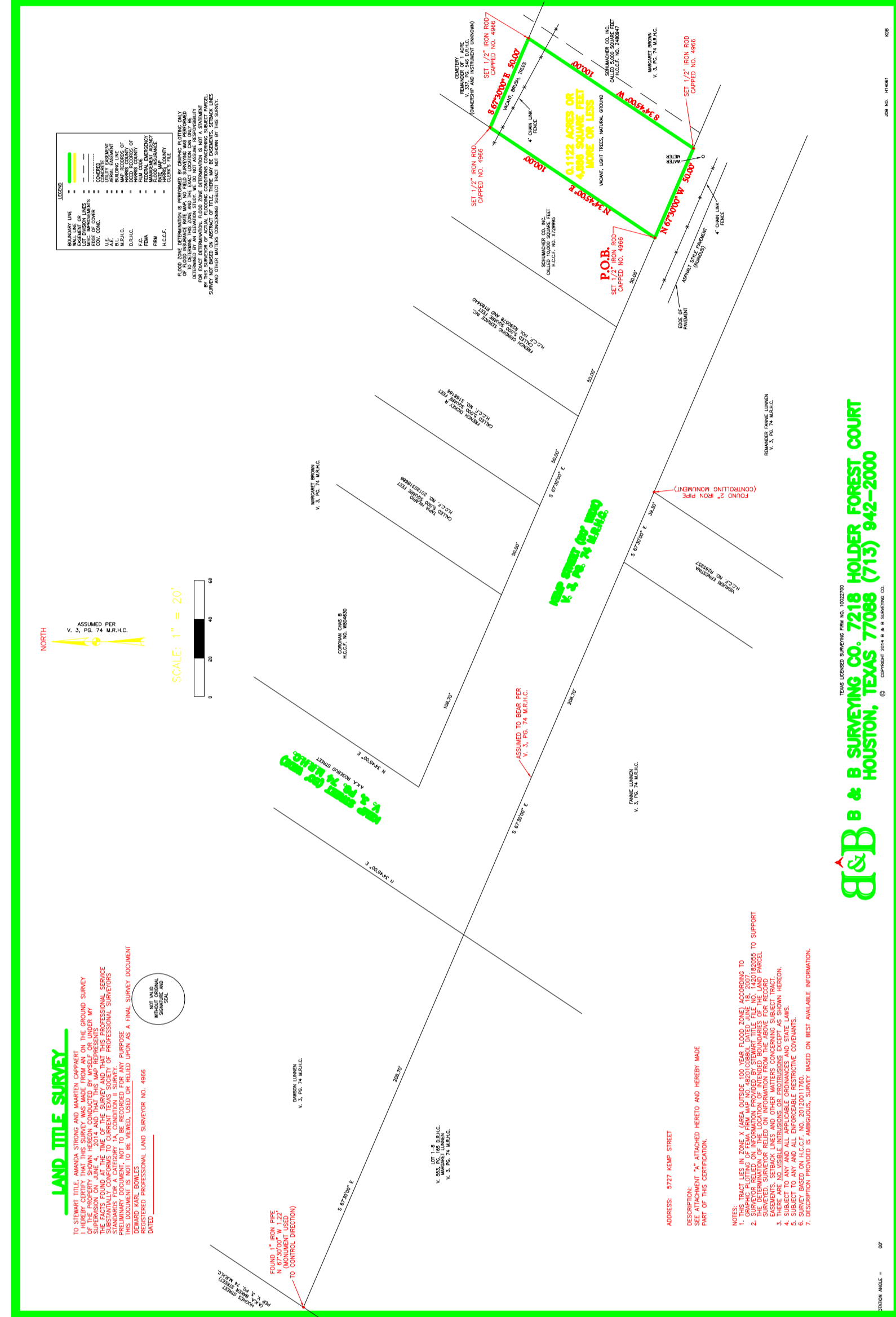
Steven Allen Designs, LLC.
PO Box 431254
Houston, TX 77243
Phone: 832-459-5882
Fax: 832-553-2693
stephen@stevenalldesigns.com

STEVEN | ALLEN | DESIGNS

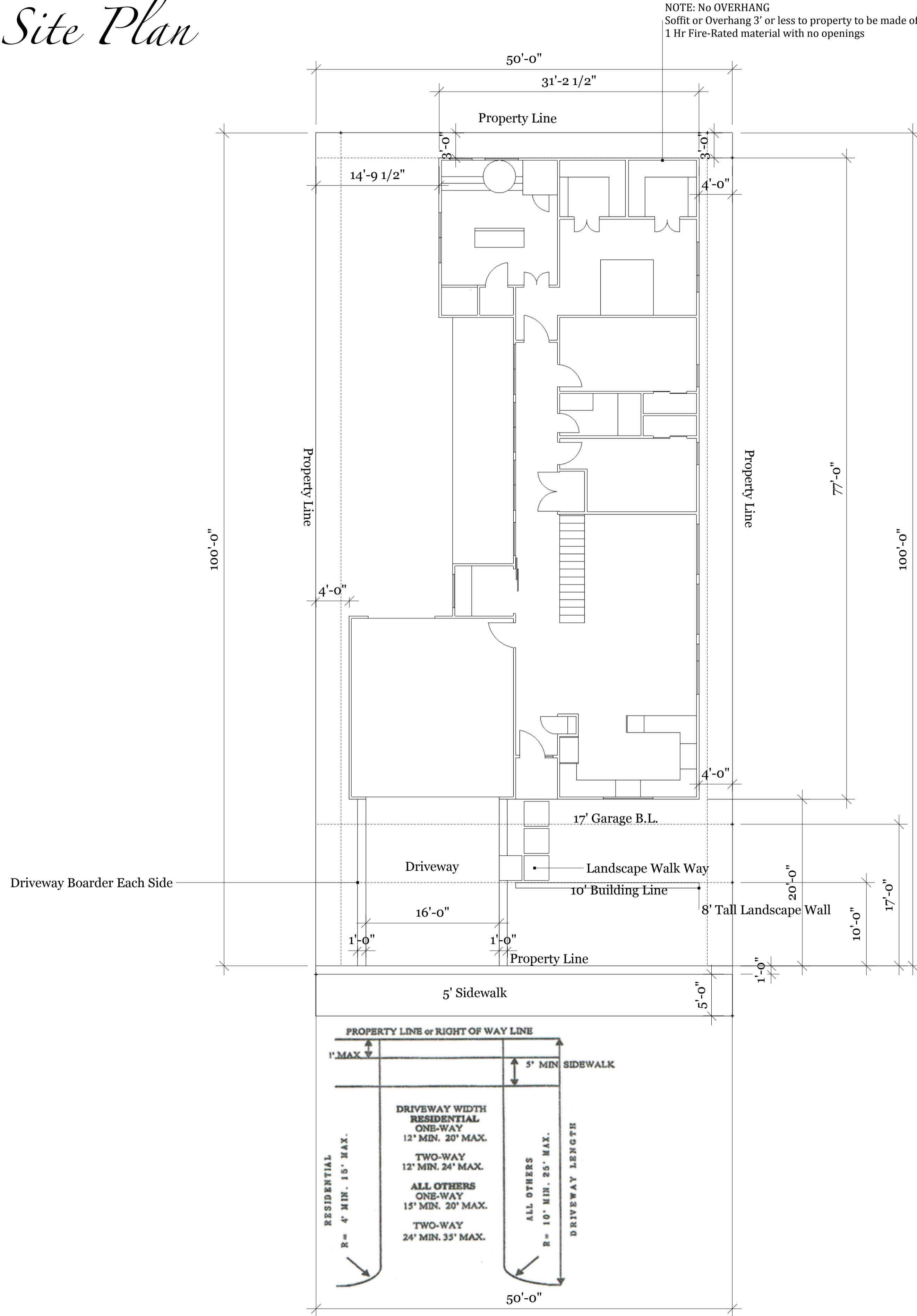
5727 Kemp St., Houston, Tx 77023
TR, Lunnon

08.24.15

Proposed Site Plan



NOTE: No OVERHANG
Soffit or Overhang 3' or less to property to be made of
1 Hr Fire-Rated material with no openings



REVISIONS

Sheet Page

1

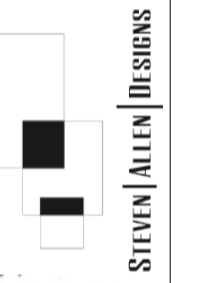
2

3

4

5

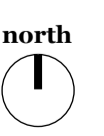
Steven Allen Designs, LLC.
PO Box 431254
Houston, TX 77243
Phone: 832.459.5882
Fax: 832.553.2693
stephen@stevenalldesigns.com



5727 Kemp St., Houston, TX 77023

Site Plans - 1st Floor

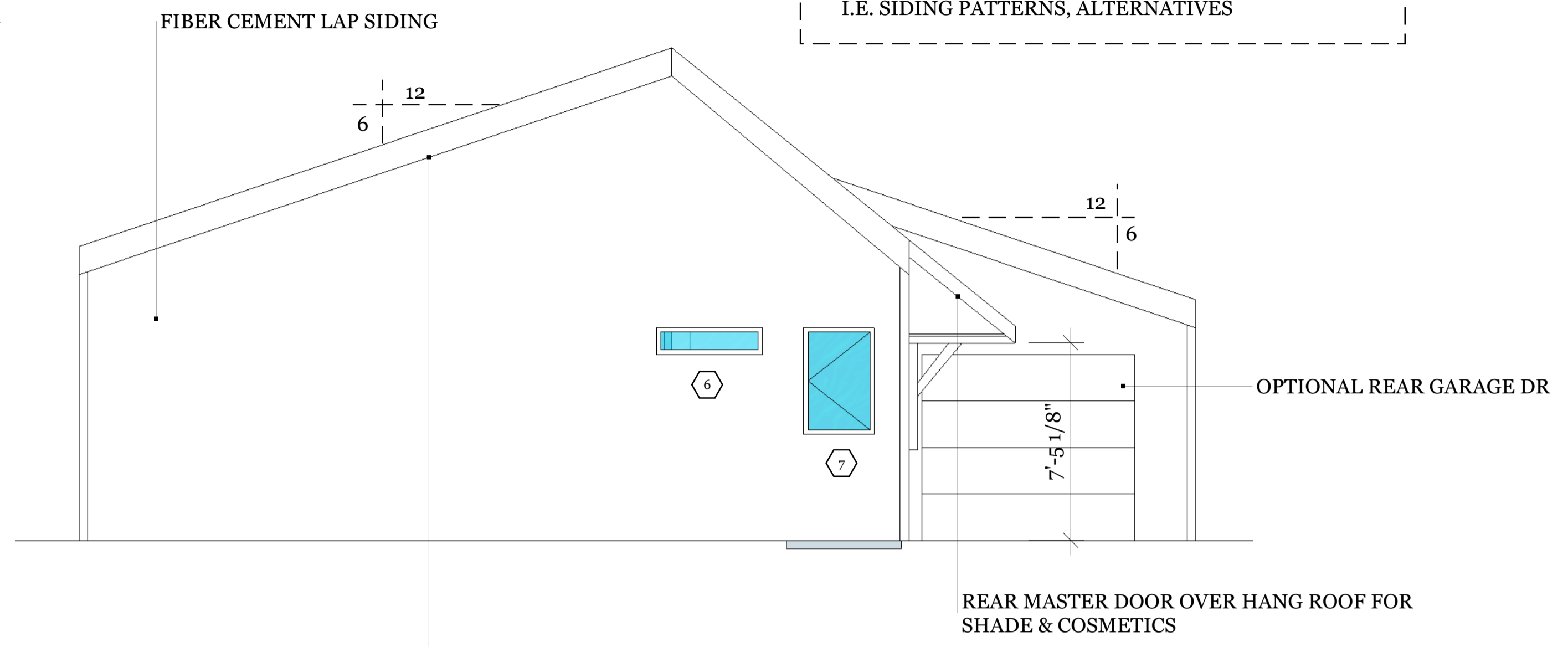
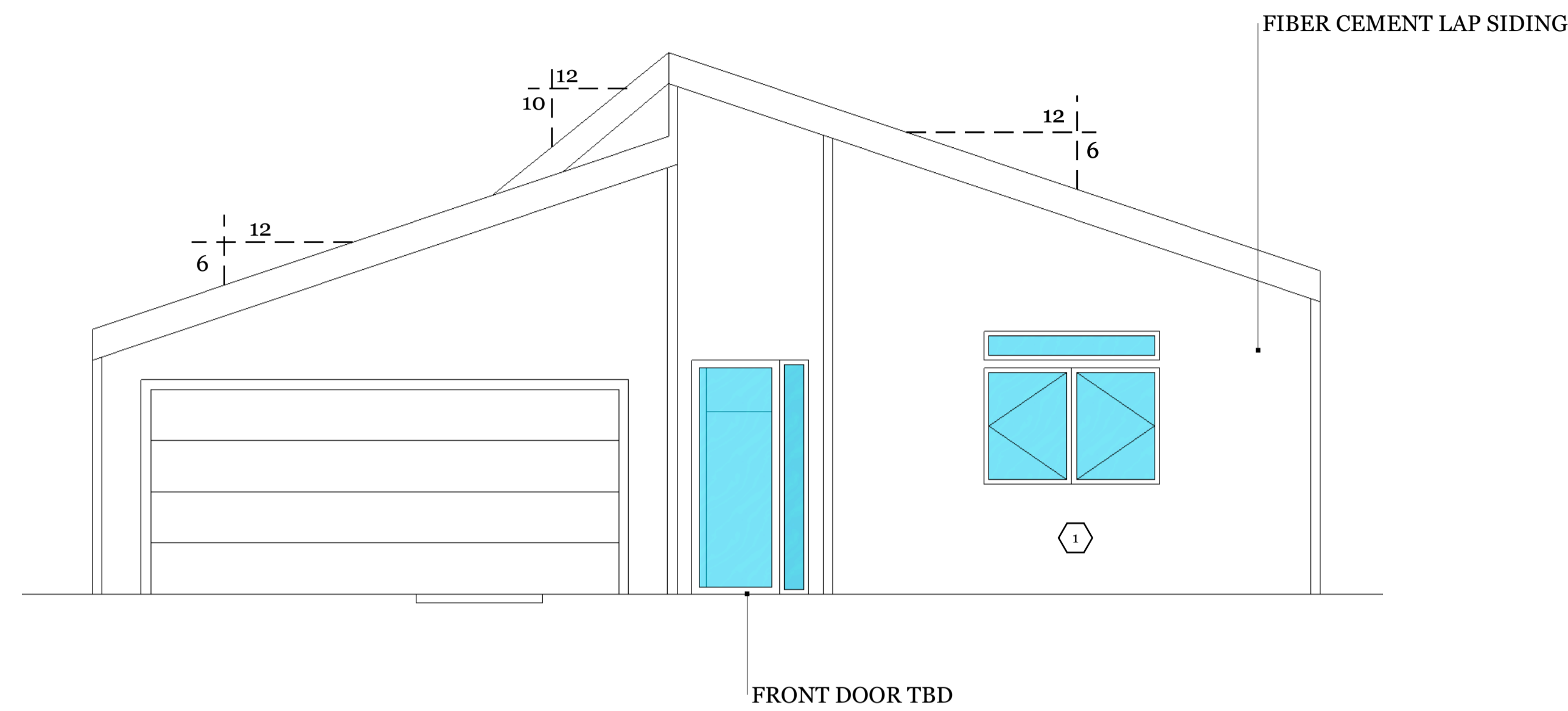
scale: 1/8"=1'



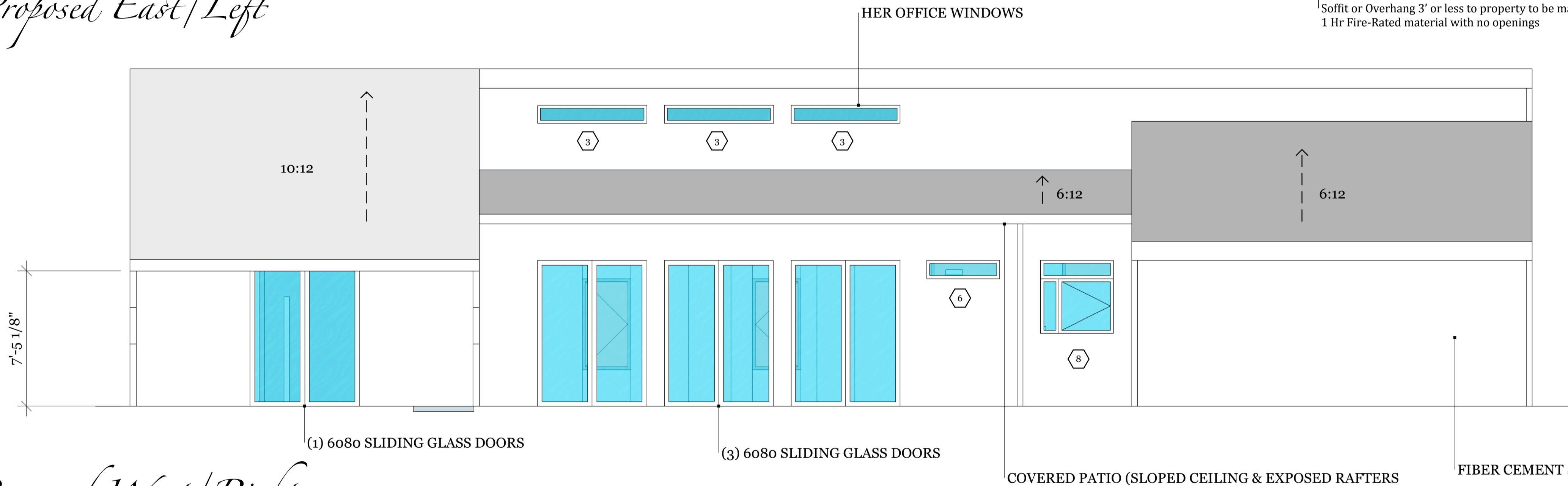
A 1.0

Proposed North / Front

Proposed South / Rear



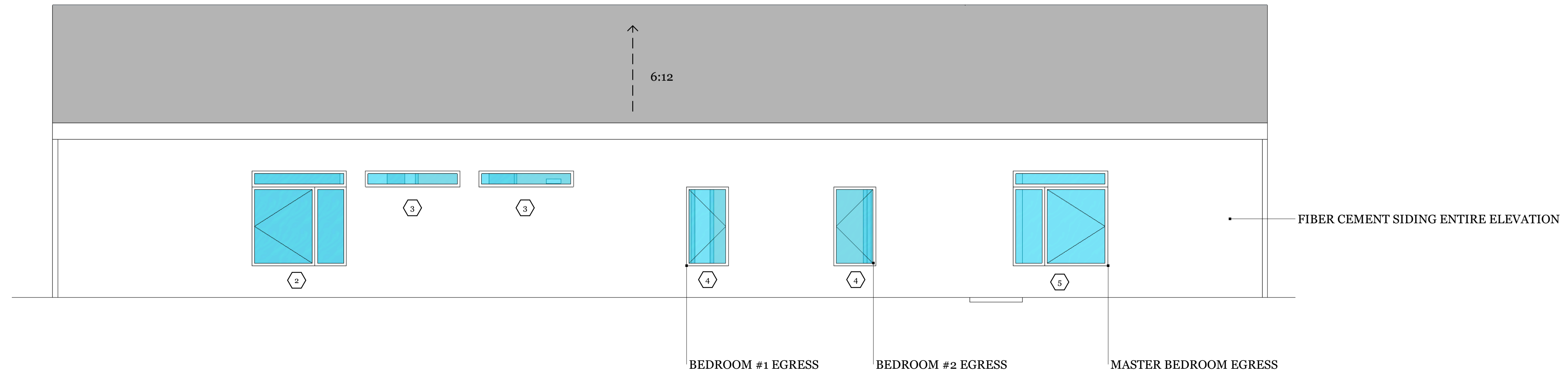
Proposed East / Left



WINDOW SCHEDULE	
1	6040 Casement/Fixed Arrangement
2	6060 Casement/Fixed Arrangement
3	6010 Fixed
4	2850 Casement (1-LH & 1-RH)
5	6060 Casement/Fixed Arrangement
6	4010 Fixed (1 TEMPERED)
7	2040 Casement (TEMPERED)
8	4040 Casement/Fixed Arrangement

NOTES:
Windows = 8' Header Height

Proposed West / Right



REVISIONS	
Rev	Description
1	
2	
3	
4	
5	

Steven Allen Designs, LLC.
PO Box 439241
Houston, TX 77243
Phone: 832.459.5882
Fax: 832.553.2693
stephen@stevenalldesigns.com

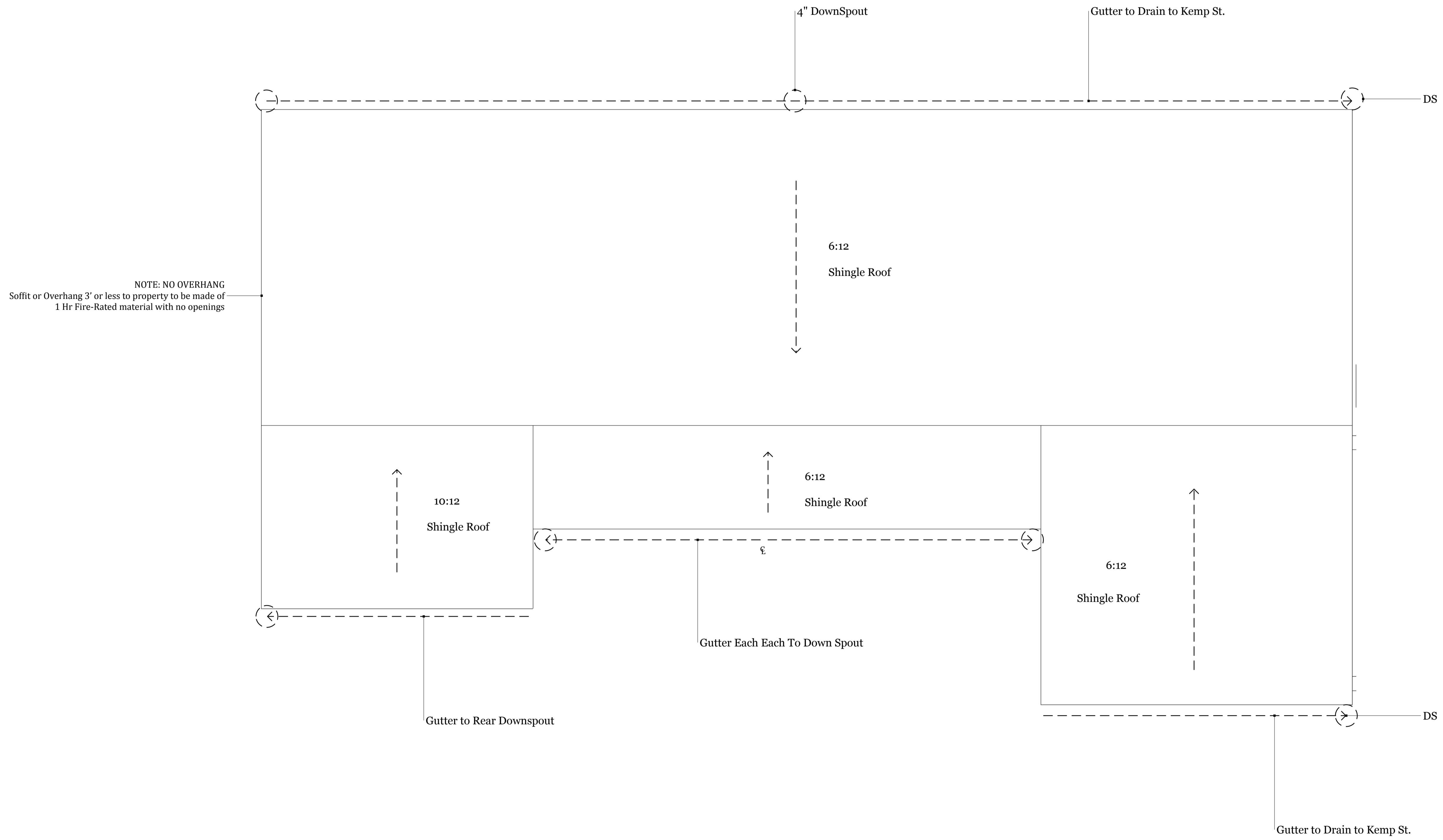
STEVEN ALLEN DESIGNS

5727 Kemp St., Houston, TX 77023

Proposed Elevations

scale: 1/4"=1'

Proposed Roof

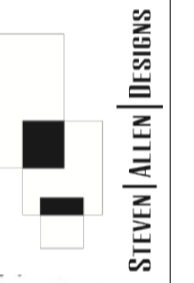


REVISIONS

Cover Page

1
2
3
4
5

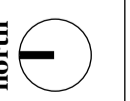
Steven Allen Designs, LLC.
PO Box 431241
Houston, TX 77243
Phone: 832.459.5882
Fax: 832.553.2693
stephen@stevenalldesigns.com



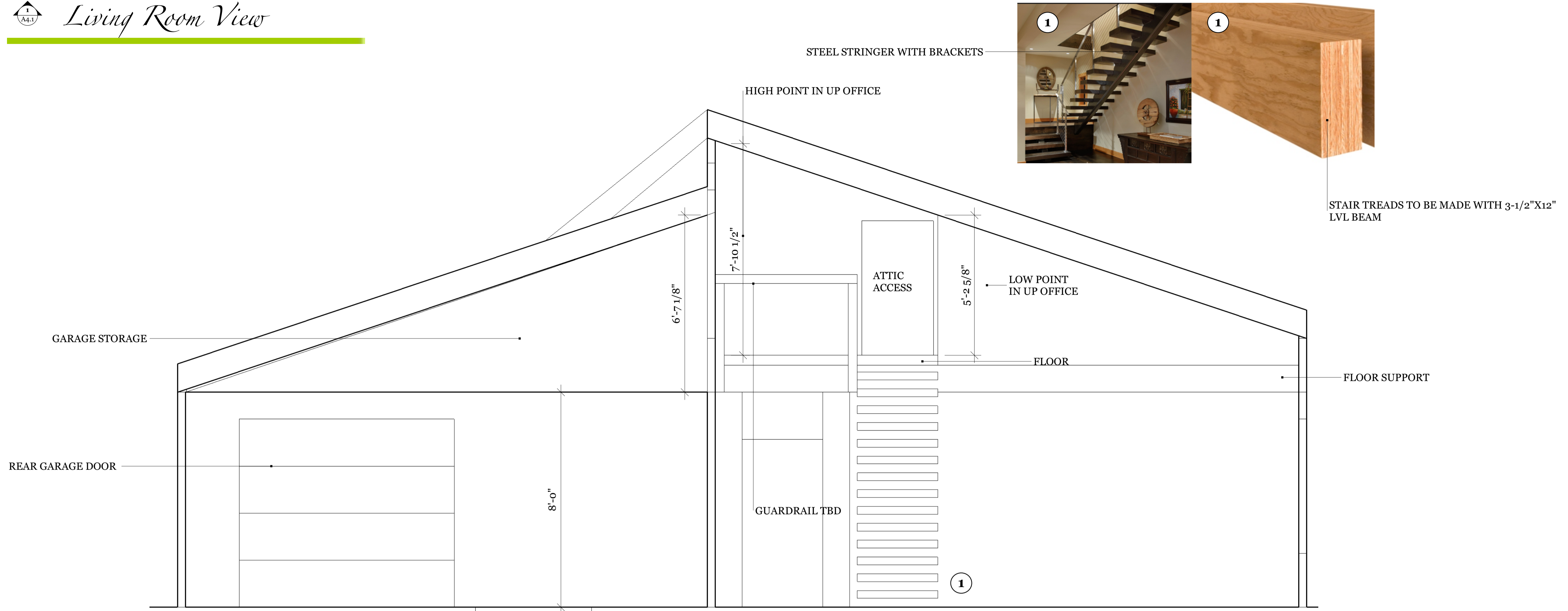
5727 Kemp St., Houston, TX 77023

Roof Elevations

scale: 1/4"=1'



1
A4.1 *Living Room View*



REVISIONS

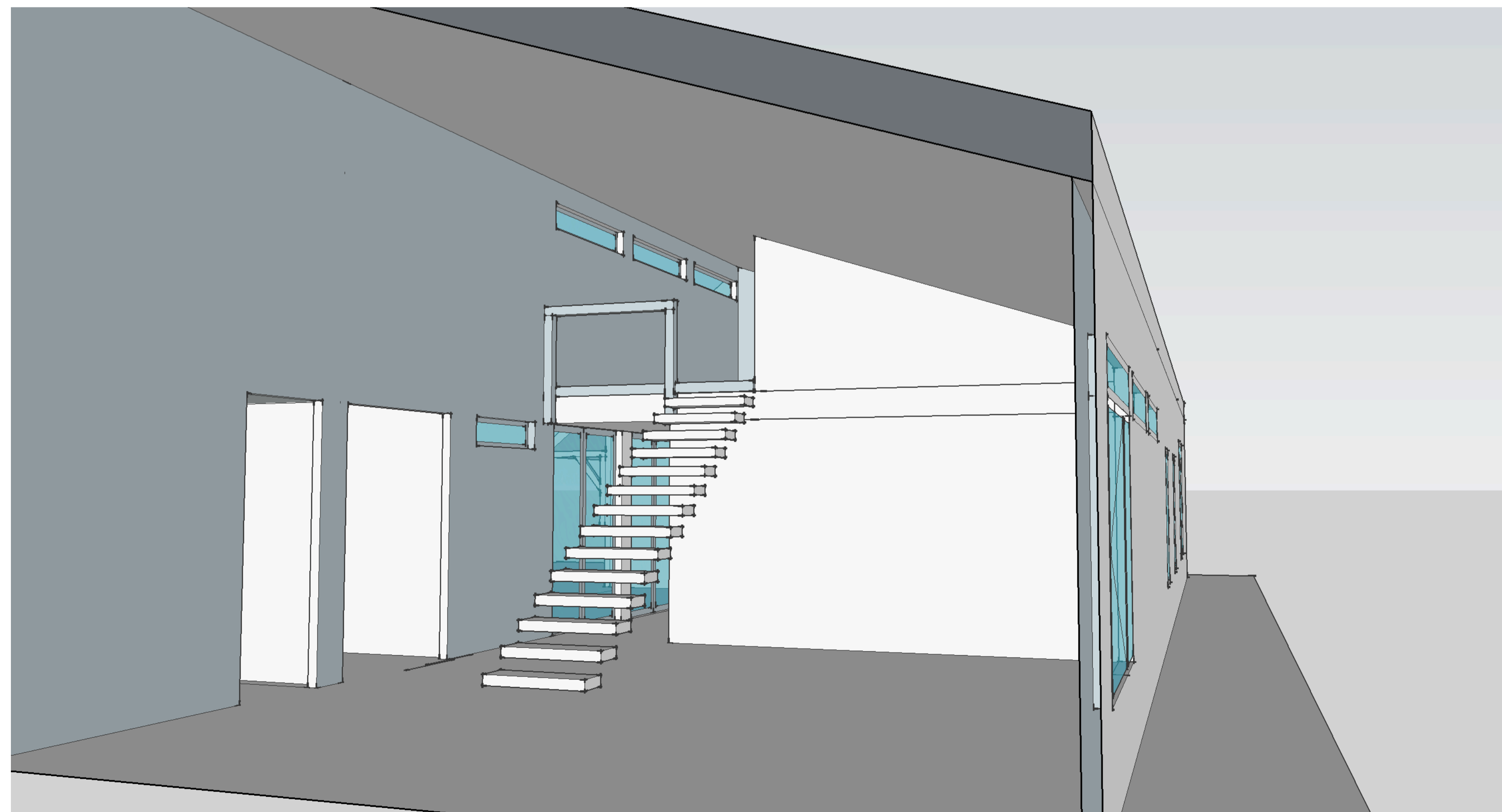
Sheet Page

1 2 3 4 5

Steven Allen Designs, LLC.
PO Box 431241
Houston, TX 77243
Phone: 832.459.5882
Fax: 832.553.2693
stephen@stevenalldesigns.com

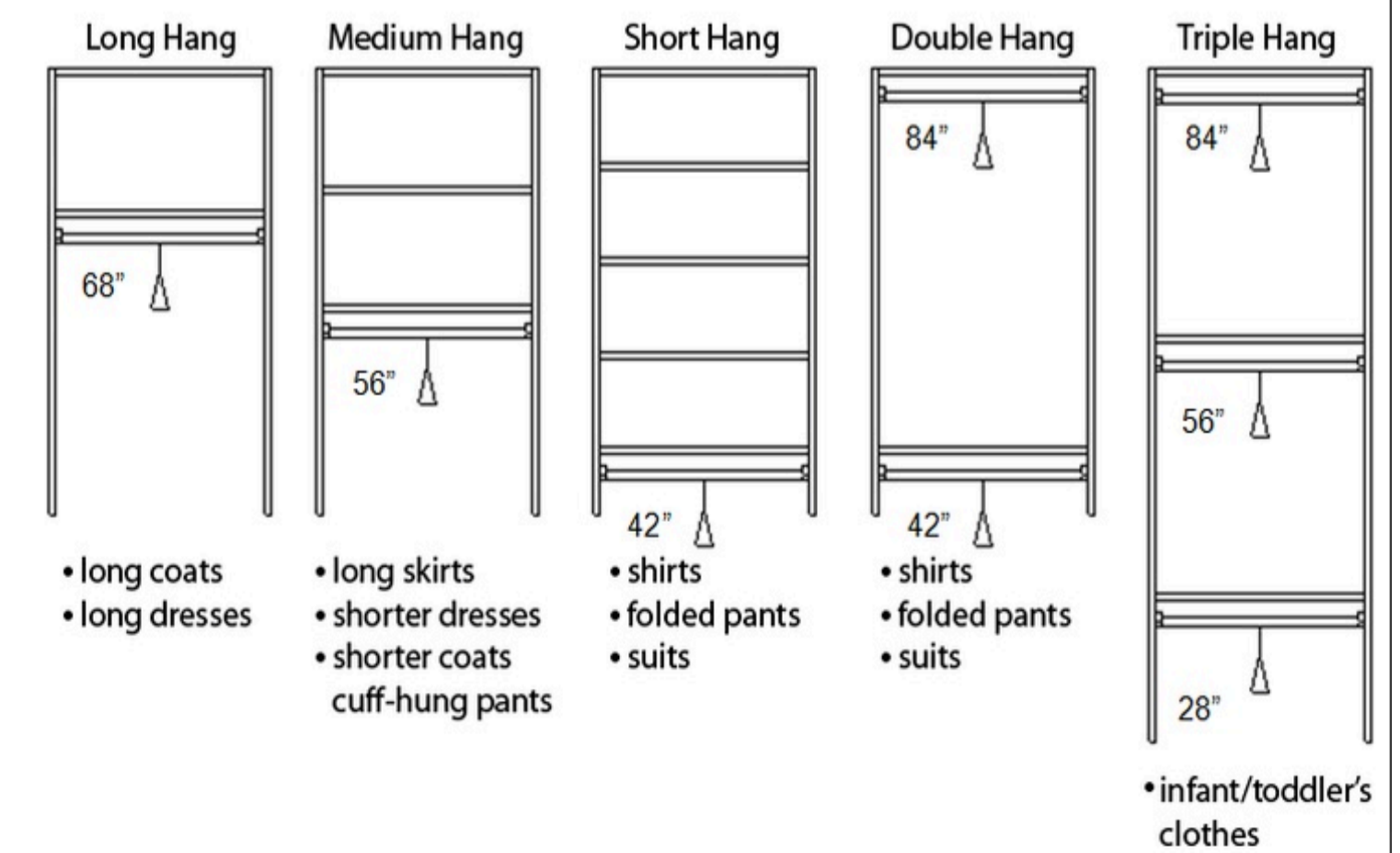
STEVEN ALLEN DESIGNS

5727 Kemp St., Houston, TX 77023



3
A4.1 *Master Closet*

Approximate Hanging Rod Heights for 96" Ceilings



Interior Elevations

scale: 1"=1'