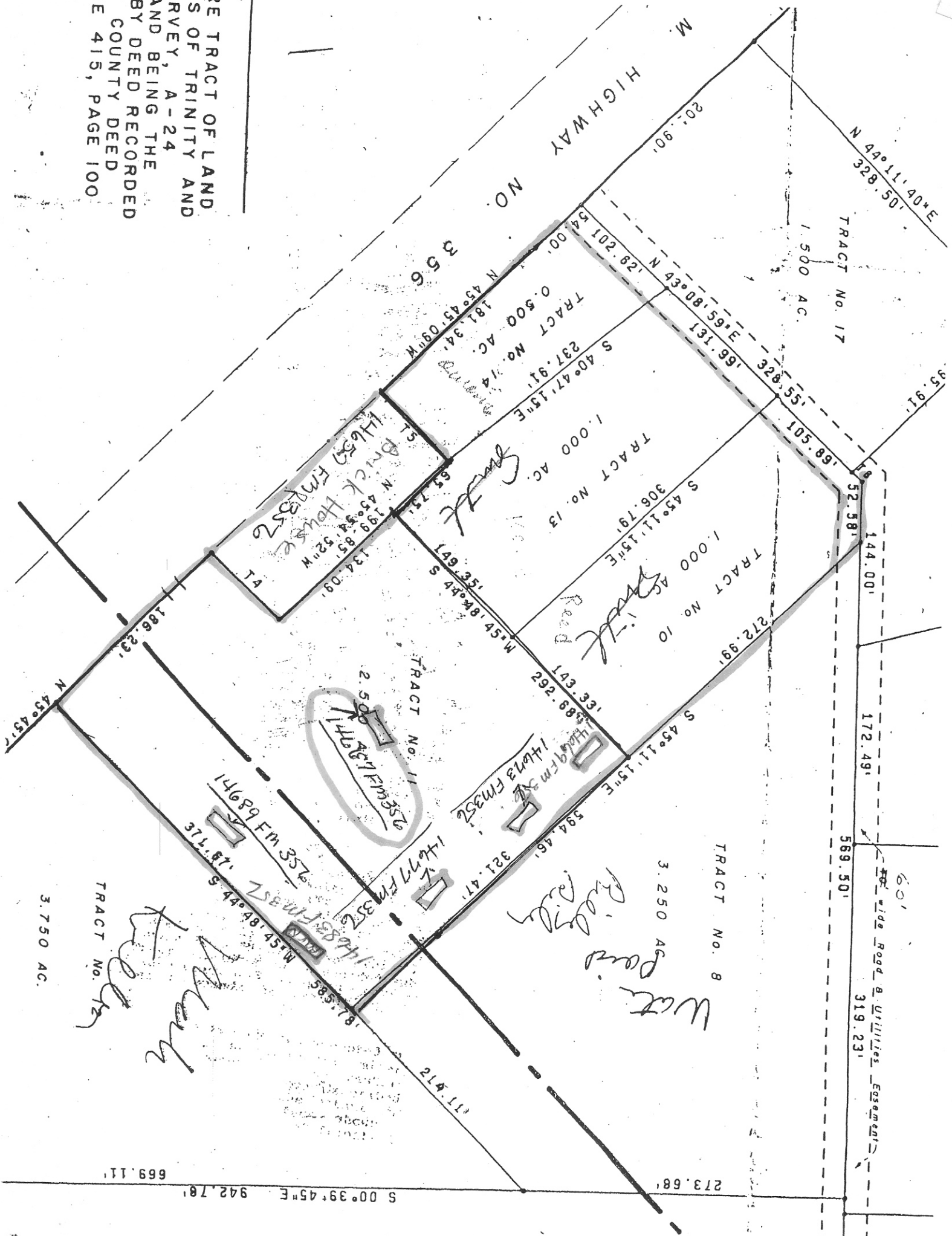


RE TRACT OF LAND
S OF TRINITY AND
RVEY, A-24
AND BEING THE
BY DEED RECORDED
COUNTY DEED
IE 415, PAGE 100



60' Wide Road & Utilities Easement
319.23'

Walt
Keller
TRACT No. 12

Walt
Pond
Road

Hick House
14637 FM 352
14637 FM 352

Hick House
14637 FM 352
14637 FM 352

Hick House
14673 FM 352
14673 FM 352

14689 FM 352
14689 FM 352