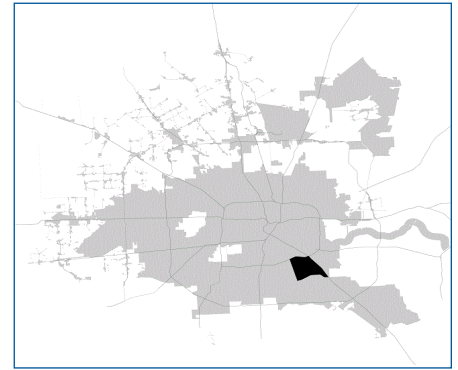


# SUPER Neighborhood RESOURCE ASSESSMENT



	Super Neighborhood		Houston	
Pop. characteristics	2000	2019	2000	2019
Total population	26,054	53,169	1,953,631	2,310,432
Persons per sq. mile	5,079	5,776	3,166	3,443
<b>Age of Population</b>				
Under 5 years	9%	9%	8%	8%
5- 17 years	24%	20%	19%	17%
18- 64 years	59%	61%	64%	65%
65 and over	9%	10%	9%	10%
<b>Ethnicity</b>				
Non Hispanic Whites	11%	6%	31%	24%
Non Hispanic Blacks	21%	20%	25%	22%
Hispanics	67%	71%	37%	45%
Non Hispanic Asians	1%	3%	6%	7%
Non Hispanic Others	1%	0%	1%	2%
<b>Income</b>				
Under \$25,000	41%	29%	33%	24%
\$25,000 to \$49,999	33%	29%	31%	24%
\$50,000 to \$99,999	21%	29%	24%	27%
Over \$100,000	4%	13%	12%	25%
<b>Median Household Income</b>	\$30,893	\$42,925	\$36,616	\$52,338
<b>Educational Status</b>				
No Diploma	50%	37%	30%	21%
High School Diploma	25%	30%	20%	23%
Some College	18%	21%	23%	23%
Bachelor's or Higher	8%	12%	27%	33%
<b>Housing and Households</b>				
Total housing units	8,011	18,284	782,378	968,704
Occupied	95%	90%	92%	89%
Vacant	5%	10%	8%	11%
Total households	7,581	16,488	717,945	858,374
Family households	5,812	11,759	457,549	521,891
Median Housing Value	\$54,010	\$109,215	\$79,300	\$171,800

**Description**

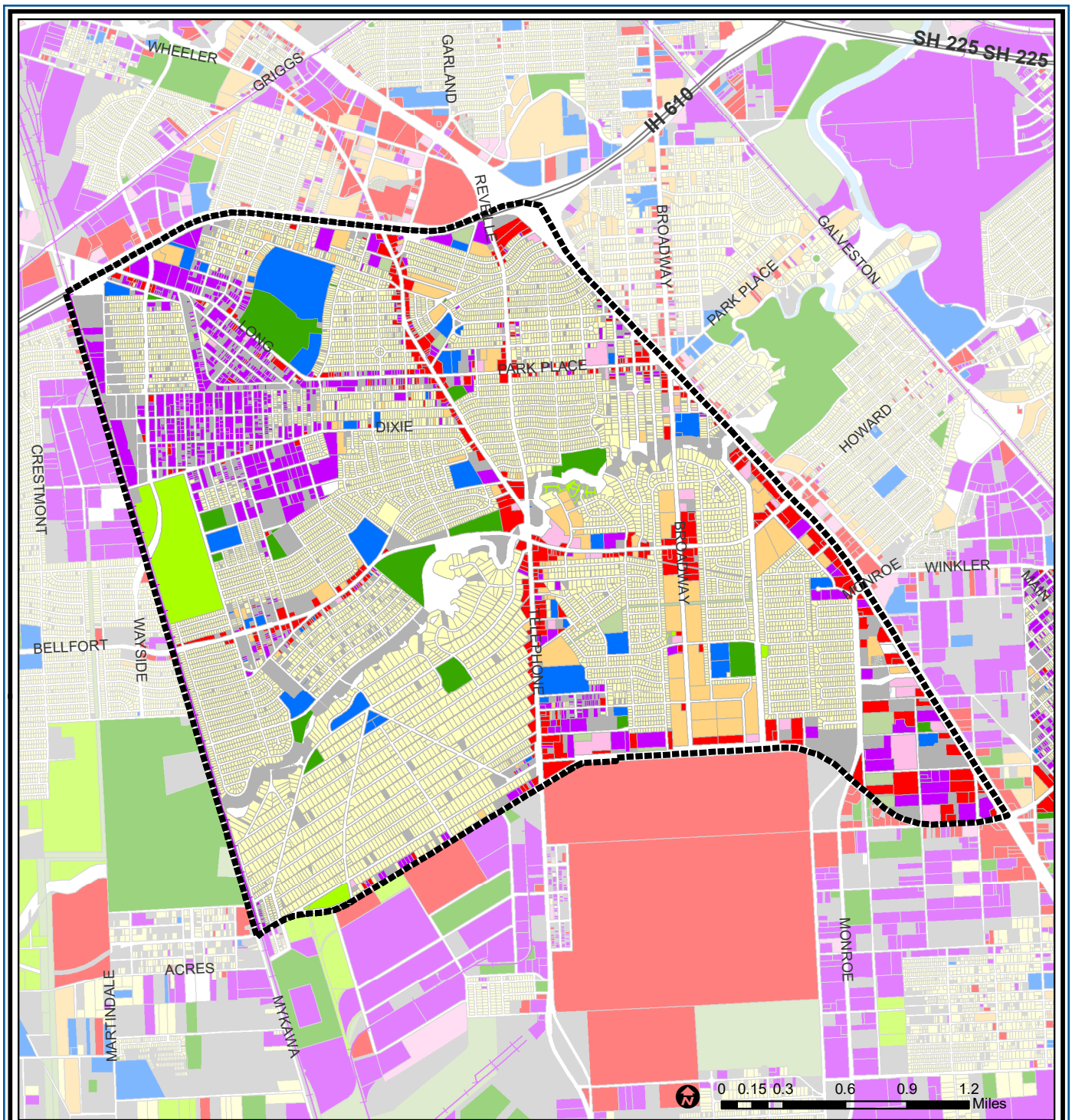
Golfcrest/Reveille is a section of southeast Houston located outside Loop 610 between Mykawa and the Gulf Freeway. Subdivisions within this community include Overbrook, Bayou Oaks, Santa Rosa, Greenway, Lum Terrace, Golfcrest, Kings Court, Tropicana Village and Oakland Plaza. Many small industrial facilities are located near Long Drive in the western part of the community. The original Golfcrest Country Club site was redeveloped with a stadium for Houston ISD, public housing and a City park. Most of the homes in the area date from the suburban development after World War II. Many of the more expensive homes were built on heavily wooded sites adjacent to Sims Bayou.

**Highlights**

- ✓ Houston City Council District I
- ✓ Houston Independent School District
- ✓ Pasadena Independent School District
- ✓ 9 Police beats (includes bordering beats)
- ✓ 5,888 acres (9.20 sq. miles)



**PLANNING &  
DEVELOPMENT  
DEPARTMENT**



### Golfcrest / Belfort / Reveille : Land Use

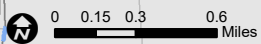
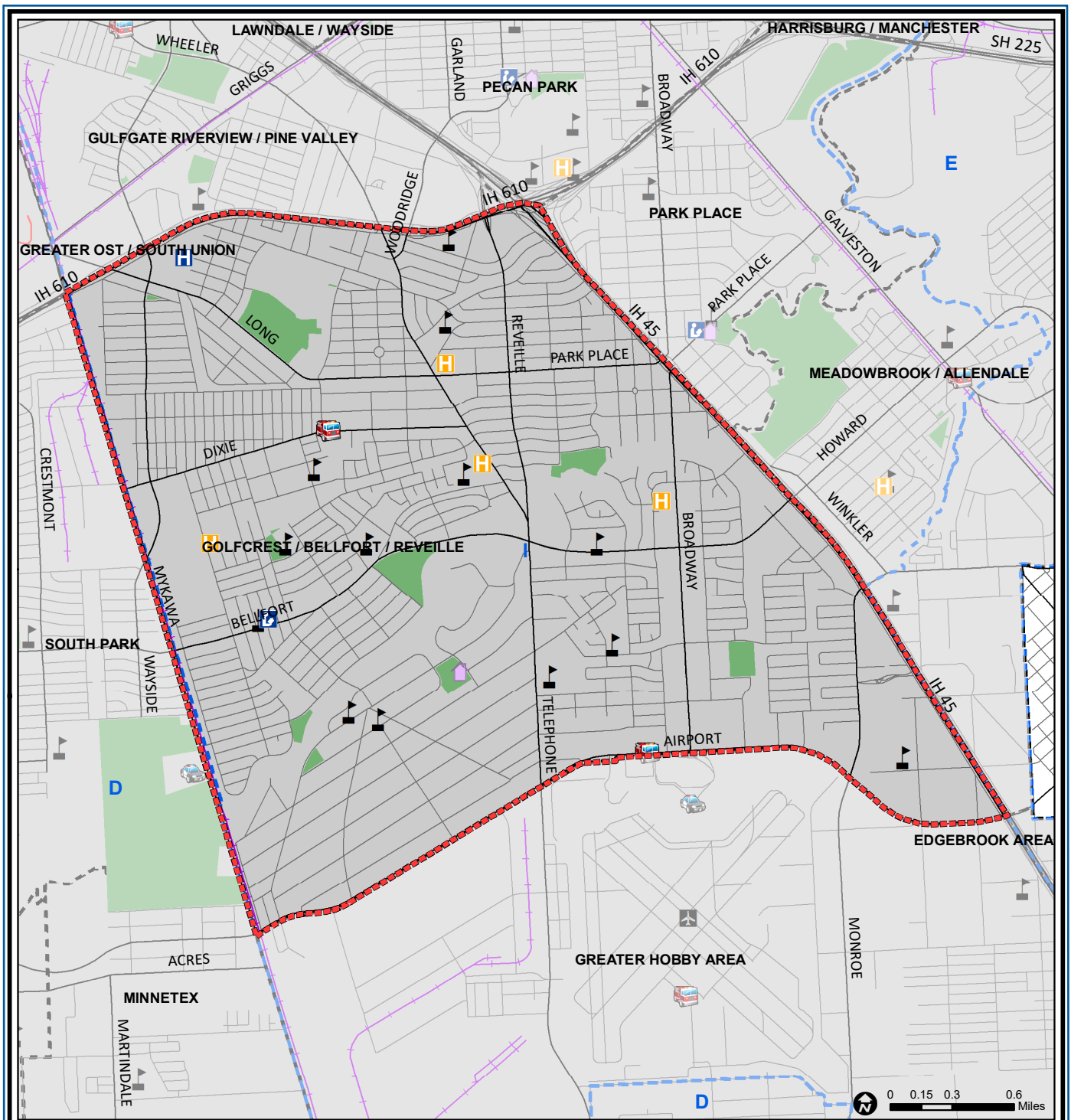
Source: City of Houston GIS Database, HCAD  
 Date: April 2021

- |                             |                              |                         |
|-----------------------------|------------------------------|-------------------------|
| Freeway                     | Commercial                   | Parks and Open Space    |
| Rail Road                   | Office                       | Undeveloped             |
| Super Neighborhood Boundary | Industrial                   | Agricultural Production |
| Single-family Residential   | Public and Institutional     | Open Water              |
| Multi-family Residential    | Transportation and Utilities | Unknown                 |

This map is made available for reference purposes only and should not be substituted for a survey product. The City of Houston will not accept liability of any kind in conjunction with its use.



**PLANNING & DEVELOPMENT DEPARTMENT**



## Golfcrest / Bellfort / Reveille : Public Facilities

Source: City of Houston GIS Database

Date: April 2021

This map is made available for reference purposes only and should not be substituted for a survey product. The City of Houston will not accept liability of any kind in conjunction with its use.

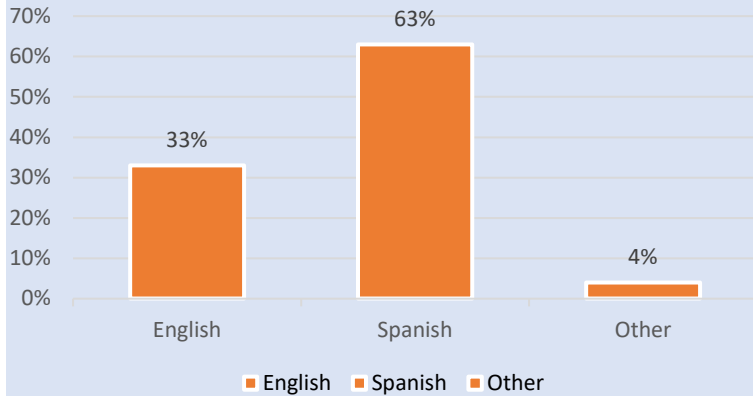
- |                             |                         |                     |
|-----------------------------|-------------------------|---------------------|
| Super Neighborhood Boundary | Airports                | Rail Road           |
| Community Centers           | Harris County Hospitals | Metro Rail Stations |
| Fire Station                | Private Hospitals       | Metro Rail Line     |
| Police Station              | Other Health Facilities | Parks               |
| School                      | Library                 | TIRZ                |



**PLANNING & DEVELOPMENT DEPARTMENT**

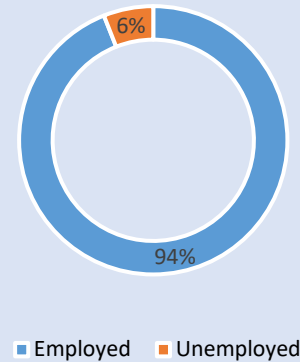
### Language Spoken at Home

#### GOLFCREST / BELLFORT / REVEILLE



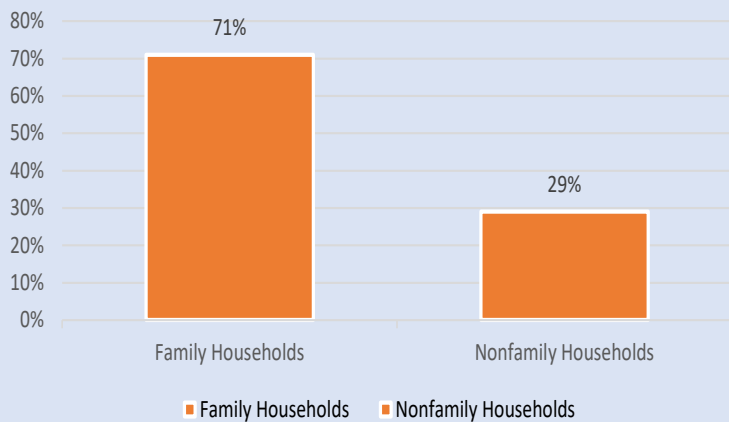
### Employment Status

#### GOLFCREST / BELLFORT / REVEILLE



### Family Status

#### GOLFCREST / BELLFORT / REVEILLE



### Housing Occupancy

#### GOLFCREST / BELLFORT / REVEILLE



Source: U.S. Census Bureau, 2000  
American Community Survey, 2015-2019 Estimates

