





# 13206 Allysum Court, Cypress, Harris County, Texas, United States, 77429



## Property Summary

 **0** garages     **4** bedrooms     **4** bathrooms     **0** half baths

 **2** floors     **4,332** Gross Living Area sqft     **4,501** total sqft

**13206 Allysum Court, Cypress, Harris County, Texas, United States, 77429**



**Room Dimensions**

Floor 1

Total sqft: 2864

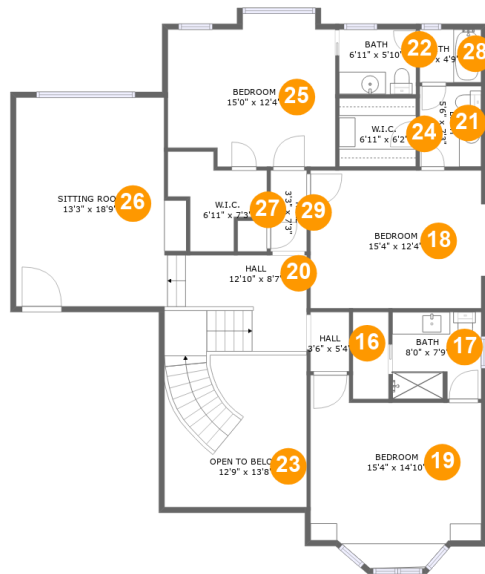
Living area: 2864

#	Room name	Dimensions	Area (sqft)	Counted as Living Area
1	Primary Bath	14'2" x 16'0"	170 sq. ft	Yes
2	Primary Bedroom	15'2" x 20'2"	284 sq. ft	Yes
3	Kitchen	13'5" x 19'9"	254 sq. ft	Yes
4	Hall	3'2" x 6'1"	19 sq. ft	Yes
5	Family Room	14'8" x 19'9"	272 sq. ft	Yes
6	Room	6'3" x 5'1"	32 sq. ft	Yes
7	Living Room	19'1" x 27'1"	460 sq. ft	Yes
8	Bath	5'2" x 10'3"	52 sq. ft	Yes
9	Office	15'4" x 21'5"	257 sq. ft	Yes
10	Dining Room	12'11" x 15'8"	202 sq. ft	Yes
11	W.i.c.	13'9" x 8'5"	114 sq. ft	Yes

**13206 Allysum Court, Cypress, Harris County,  
Texas, United States, 77429**

#	Room name	Dimensions	Area (sqft)	Counted as Living Area
12	Hall	7'11" x 4'0"	66 sq. ft	Yes
13	Breakfast Nook	14'6" x 10'8"	143 sq. ft	Yes
14	Laundry	8'10" x 9'0"	73 sq. ft	Yes
15	Foyer	12'10" x 15'8"	199 sq. ft	Yes

# 13206 Allysum Court, Cypress, Harris County, Texas, United States, 77429



## Room Dimensions

Floor 2

Total sqft: 1637

Living area: 1468

#	Room name	Dimensions	Area (sqft)	Counted as Living Area
16	Hall	3'6" x 5'4"	18 sq. ft	Yes
17	Bath	8'0" x 7'9"	61 sq. ft	Yes
18	Bedroom	15'4" x 12'4"	189 sq. ft	Yes
19	Bedroom	15'4" x 14'10"	216 sq. ft	Yes
20	Hall	12'10" x 8'7"	151 sq. ft	Yes
21	Bath	5'6" x 7'3"	40 sq. ft	Yes
22	Bath	6'11" x 5'10"	40 sq. ft	Yes
23	Open To Below	12'9" x 13'8"	138 sq. ft	No
24	W.i.c.	6'11" x 6'2"	42 sq. ft	Yes
25	Bedroom	15'0" x 12'4"	177 sq. ft	Yes
26	Sitting Room	13'3" x 18'9"	258 sq. ft	Yes

Scan captured on Tue, 25 Jun 2024 18:50:44 GMT

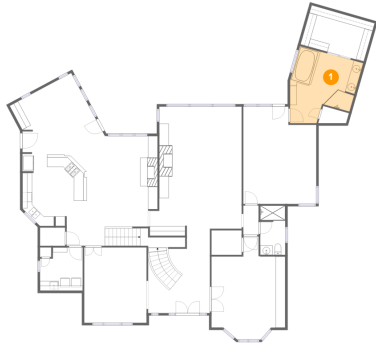
Information is calculated by CubiCasa technology; deemed highly reliable but not guaranteed.

**13206 Allysum Court, Cypress, Harris County,  
Texas, United States, 77429**

#	Room name	Dimensions	Area (sqft)	Counted as Living Area
27	W.i.c.	6'11" x 7'3"	53 sq. ft	Yes
28	Bath	5'6" x 4'9"	26 sq. ft	Yes
29	Hall	3'3" x 7'3"	24 sq. ft	Yes

# 13206 Allysum Court, Cypress, Harris County, Texas, United States, 77429

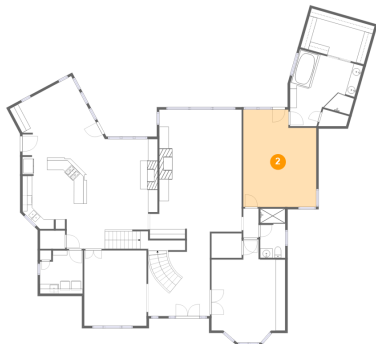
## 1 Floor 1 - Primary Bath



**Dimensions:** 14'2" x 16'0"  
**Area:** 170 sq. ft  
**Counted as Living Area:**  
Yes

**Heated:** Yes  
**Finished:** Yes  
**Enclosed:** Yes  
**Contiguous:**  
Yes  
**Permitted:** Yes  
**Wet Space:** Yes  
**Addition:** No  
**Conversion:** No

## 2 Floor 1 - Primary Bedroom

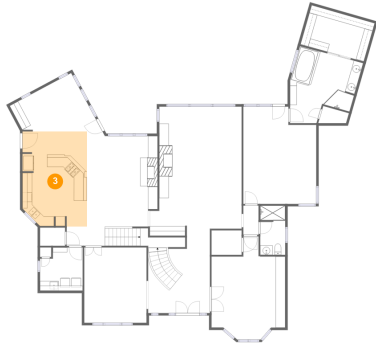


**Dimensions:** 15'2" x 20'2"  
**Area:** 284 sq. ft  
**Counted as Living Area:**  
Yes

**Heated:** Yes  
**Finished:** Yes  
**Enclosed:** Yes  
**Contiguous:**  
Yes  
**Permitted:** Yes  
**Wet Space:** No  
**Addition:** No  
**Conversion:** No

# 13206 Allysum Court, Cypress, Harris County, Texas, United States, 77429

## 3 Floor 1 - Kitchen



**Dimensions:** 13'5" x 19'9"  
**Area:** 254 sq. ft  
**Counted as Living Area:**  
Yes

**Heated:** Yes  
**Finished:** Yes  
**Enclosed:** Yes  
**Contiguous:**  
Yes  
**Permitted:** Yes  
**Wet Space:** No  
**Addition:** No  
**Conversion:** No

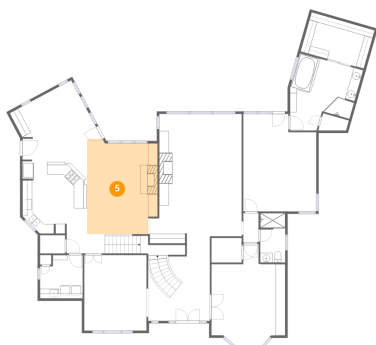
## 4 Floor 1 - Hall



**Dimensions:** 3'2" x 6'1"  
**Area:** 19 sq. ft  
**Counted as Living Area:**  
Yes

**Heated:** Yes  
**Finished:** Yes  
**Enclosed:** Yes  
**Contiguous:**  
Yes  
**Permitted:** Yes  
**Wet Space:** No  
**Addition:** No  
**Conversion:** No

## 5 Floor 1 - Family Room



**Dimensions:** 14'8" x 19'9"  
**Area:** 272 sq. ft  
**Counted as Living Area:**  
Yes

**Heated:** Yes  
**Finished:** Yes  
**Enclosed:** Yes  
**Contiguous:**  
Yes  
**Permitted:** Yes  
**Wet Space:** No  
**Addition:** No  
**Conversion:** No

# 13206 Allysum Court, Cypress, Harris County, Texas, United States, 77429

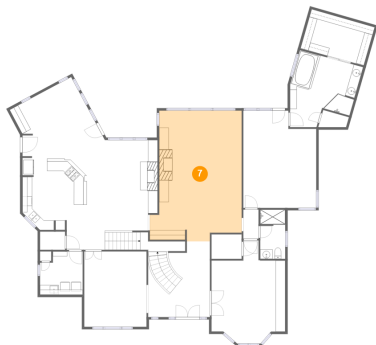
## 6 Floor 1 - Room



Dimensions: 6'3" x 5'1"  
Area: 32 sq. ft  
Counted as Living Area:  
Yes

Heated: Yes  
Finished: Yes  
Enclosed: Yes  
Contiguous:  
Yes  
Permitted: Yes  
Wet Space: No  
Addition: No  
Conversion: No

## 7 Floor 1 - Living Room



Dimensions: 19'1" x 27'1"  
Area: 460 sq. ft  
Counted as Living Area:  
Yes

Heated: Yes  
Finished: Yes  
Enclosed: Yes  
Contiguous:  
Yes  
Permitted: Yes  
Wet Space: No  
Addition: No  
Conversion: No

## 8 Floor 1 - Bath



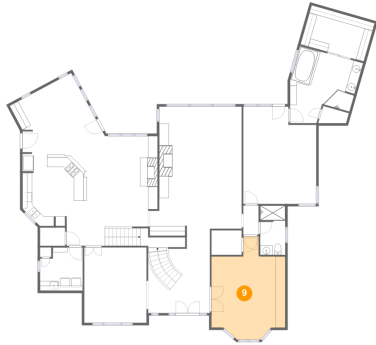
Dimensions: 5'2" x 10'3"  
Area: 52 sq. ft  
Counted as Living Area:  
Yes

Heated: Yes  
Finished: Yes  
Enclosed: Yes  
Contiguous:  
Yes  
Permitted: Yes  
Wet Space: Yes  
Addition: No  
Conversion: No



# 13206 Allysum Court, Cypress, Harris County, Texas, United States, 77429

## 9 Floor 1 - Office



**Dimensions:** 15'4" x 21'5"  
**Area:** 257 sq. ft  
**Counted as Living Area:**  
Yes

**Heated:** Yes  
**Finished:** Yes  
**Enclosed:** Yes  
**Contiguous:**  
Yes  
**Permitted:** Yes  
**Wet Space:** No  
**Addition:** No  
**Conversion:** No

## 10 Floor 1 - Dining Room



**Dimensions:** 12'11" x 15'8"  
**Area:** 202 sq. ft  
**Counted as Living Area:**  
Yes

**Heated:** Yes  
**Finished:** Yes  
**Enclosed:** Yes  
**Contiguous:**  
Yes  
**Permitted:** Yes  
**Wet Space:** No  
**Addition:** No  
**Conversion:** No

## 11 Floor 1 - W.i.c.



**Dimensions:** 13'9" x 8'5"  
**Area:** 114 sq. ft  
**Counted as Living Area:**  
Yes

**Heated:** Yes  
**Finished:** Yes  
**Enclosed:** Yes  
**Contiguous:**  
Yes  
**Permitted:** Yes  
**Wet Space:** No  
**Addition:** No  
**Conversion:** No

# 13206 Allysum Court, Cypress, Harris County, Texas, United States, 77429

## 12 Floor 1 - Hall



Dimensions: 7'11" x 4'0"  
Area: 66 sq. ft  
Counted as Living Area:  
Yes

Heated: Yes  
Finished: Yes  
Enclosed: Yes  
Contiguous:  
Yes  
Permitted: Yes  
Wet Space: No  
Addition: No  
Conversion: No

## 13 Floor 1 - Breakfast Nook



Dimensions: 14'6" x 10'8"  
Area: 143 sq. ft  
Counted as Living Area:  
Yes

Heated: Yes  
Finished: Yes  
Enclosed: Yes  
Contiguous:  
Yes  
Permitted: Yes  
Wet Space: No  
Addition: No  
Conversion: No

## 14 Floor 1 - Laundry



Dimensions: 8'10" x 9'0"  
Area: 73 sq. ft  
Counted as Living Area:  
Yes

Heated: Yes  
Finished: Yes  
Enclosed: Yes  
Contiguous:  
Yes  
Permitted: Yes  
Wet Space: No  
Addition: No  
Conversion: No

# 13206 Allysum Court, Cypress, Harris County, Texas, United States, 77429

## 15 Floor 1 - Foyer



Dimensions: 12'10" x 15'8"  
Area: 199 sq. ft  
Counted as Living Area:  
Yes

Heated: Yes  
Finished: Yes  
Enclosed: Yes  
Contiguous:  
Yes  
Permitted: Yes  
Wet Space: No  
Addition: No  
Conversion: No

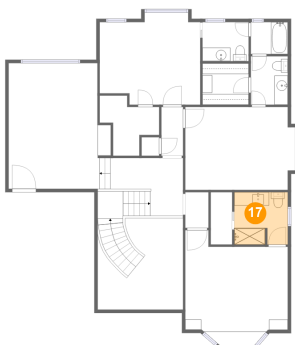
## 16 Floor 2 - Hall



Dimensions: 3'6" x 5'4"  
Area: 18 sq. ft  
Counted as Living Area:  
Yes

Heated: Yes  
Finished: Yes  
Enclosed: Yes  
Contiguous:  
Yes  
Permitted: Yes  
Wet Space: No  
Addition: No  
Conversion: No

## 17 Floor 2 - Bath

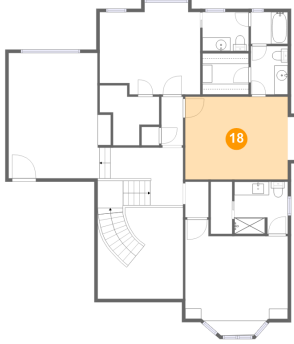


Dimensions: 8'0" x 7'9"  
Area: 61 sq. ft  
Counted as Living Area:  
Yes

Heated: Yes  
Finished: Yes  
Enclosed: Yes  
Contiguous:  
Yes  
Permitted: Yes  
Wet Space: Yes  
Addition: No  
Conversion: No

# 13206 Allysum Court, Cypress, Harris County, Texas, United States, 77429

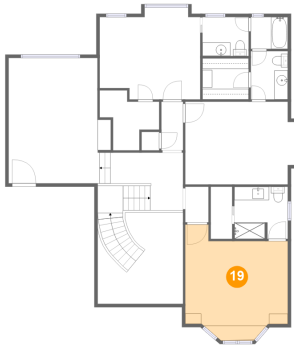
## 18 Floor 2 - Bedroom



Dimensions: 15'4" x 12'4"  
Area: 189 sq. ft  
Counted as Living Area:  
Yes

Heated: Yes  
Finished: Yes  
Enclosed: Yes  
Contiguous:  
Yes  
Permitted: Yes  
Wet Space: No  
Addition: No  
Conversion: No

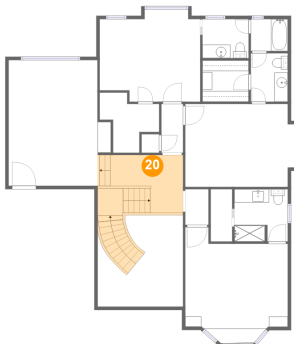
## 19 Floor 2 - Bedroom



Dimensions: 15'4" x 14'10"  
Area: 216 sq. ft  
Counted as Living Area:  
Yes

Heated: Yes  
Finished: Yes  
Enclosed: Yes  
Contiguous:  
Yes  
Permitted: Yes  
Wet Space: No  
Addition: No  
Conversion: No

## 20 Floor 2 - Hall



Dimensions: 12'10" x 8'7"  
Area: 151 sq. ft  
Counted as Living Area:  
Yes

Heated: Yes  
Finished: Yes  
Enclosed: Yes  
Contiguous:  
Yes  
Permitted: Yes  
Wet Space: No  
Addition: No  
Conversion: No

# 13206 Allysum Court, Cypress, Harris County, Texas, United States, 77429

## 21 Floor 2 - Bath



Dimensions: 5'6" x 7'3"  
Area: 40 sq. ft  
Counted as Living Area:  
Yes

Heated: Yes  
Finished: Yes  
Enclosed: Yes  
Contiguous:  
Yes  
Permitted: Yes  
Wet Space: Yes  
Addition: No  
Conversion: No

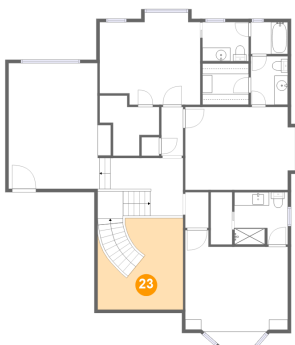
## 22 Floor 2 - Bath



Dimensions: 6'11" x 5'10"  
Area: 40 sq. ft  
Counted as Living Area:  
Yes

Heated: Yes  
Finished: Yes  
Enclosed: Yes  
Contiguous:  
Yes  
Permitted: Yes  
Wet Space: Yes  
Addition: No  
Conversion: No

## 23 Floor 2 - Open To Below

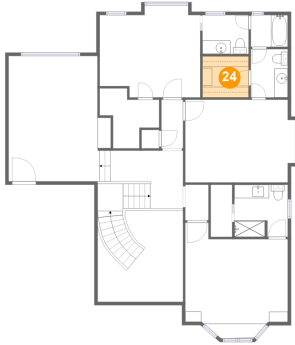


Dimensions: 12'9" x 13'8"  
Area: 138 sq. ft  
Counted as Living Area: No

Heated: No  
Finished: No  
Enclosed: No  
Contiguous: Yes  
Permitted: No  
Wet Space: No  
Addition: No  
Conversion: No

# 13206 Allysum Court, Cypress, Harris County, Texas, United States, 77429

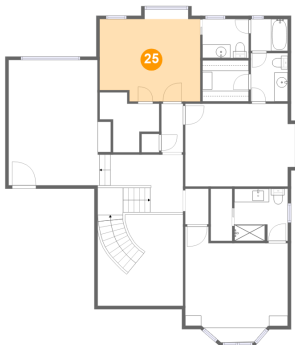
## 24 Floor 2 - W.i.c.



Dimensions: 6'11" x 6'2"  
Area: 42 sq. ft  
Counted as Living Area:  
Yes

Heated: Yes  
Finished: Yes  
Enclosed: Yes  
Contiguous:  
Yes  
Permitted: Yes  
Wet Space: No  
Addition: No  
Conversion: No

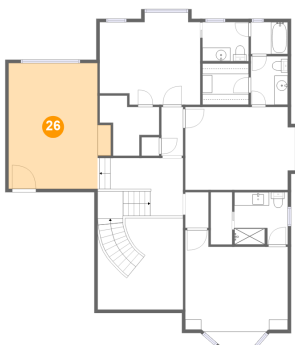
## 25 Floor 2 - Bedroom



Dimensions: 15'0" x 12'4"  
Area: 177 sq. ft  
Counted as Living Area:  
Yes

Heated: Yes  
Finished: Yes  
Enclosed: Yes  
Contiguous:  
Yes  
Permitted: Yes  
Wet Space: No  
Addition: No  
Conversion: No

## 26 Floor 2 - Sitting Room



Dimensions: 13'3" x 18'9"  
Area: 258 sq. ft  
Counted as Living Area:  
Yes

Heated: Yes  
Finished: Yes  
Enclosed: Yes  
Contiguous:  
Yes  
Permitted: Yes  
Wet Space: No  
Addition: No  
Conversion: No

# 13206 Allysum Court, Cypress, Harris County, Texas, United States, 77429

## 27 Floor 2 - W.i.c.



Dimensions: 6'11" x 7'3"  
Area: 53 sq. ft  
Counted as Living Area:  
Yes

Heated: Yes  
Finished: Yes  
Enclosed: Yes  
Contiguous:  
Yes  
Permitted: Yes  
Wet Space: No  
Addition: No  
Conversion: No

## 28 Floor 2 - Bath



Dimensions: 5'6" x 4'9"  
Area: 26 sq. ft  
Counted as Living Area:  
Yes

Heated: Yes  
Finished: Yes  
Enclosed: Yes  
Contiguous:  
Yes  
Permitted: Yes  
Wet Space: Yes  
Addition: No  
Conversion: No

## 29 Floor 2 - Hall



Dimensions: 3'3" x 7'3"  
Area: 24 sq. ft  
Counted as Living Area:  
Yes

Heated: Yes  
Finished: Yes  
Enclosed: Yes  
Contiguous:  
Yes  
Permitted: Yes  
Wet Space: No  
Addition: No  
Conversion: No