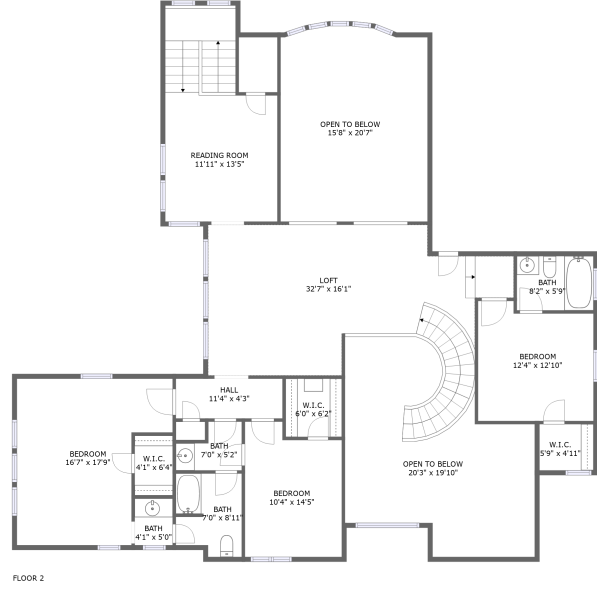
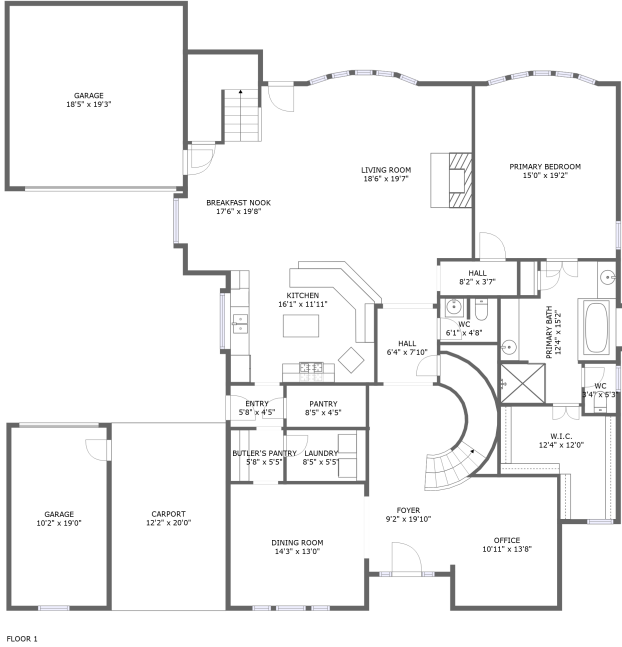


2871 Alentina Court, League City, Texas 77573, United States




Property Summary

 **2** garages

 **4** bedrooms

 **3** bathrooms

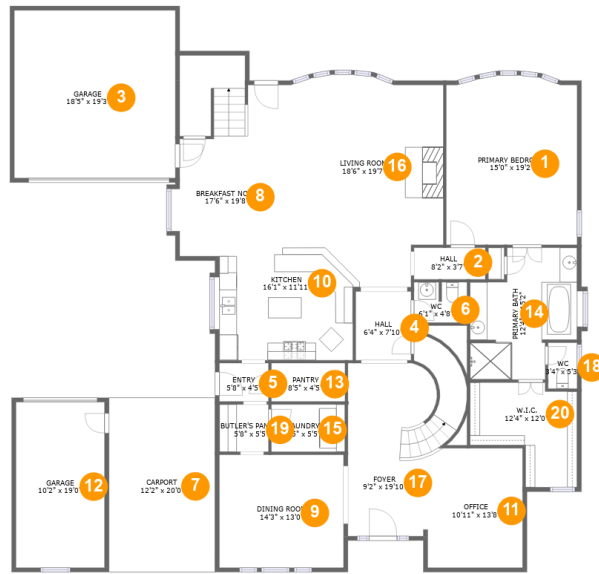
 **1** half baths

 **2** floors

 **4,095** Gross Living Area sqft

 **5,679** total sqft

2871 Alentina Court, League City, Texas 77573, United States



Room Dimensions

Floor 1

Total sqft: 3294

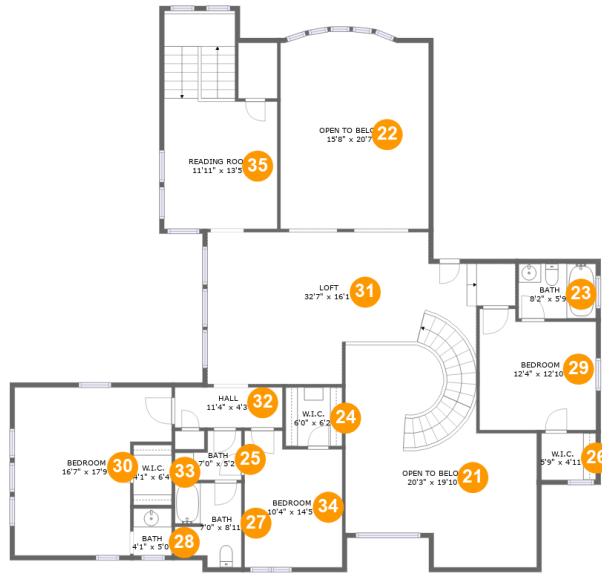
Living area: 2426

#	Room name	Dimensions	Area (sqft)	Counted as Living Area
1	Primary Bedroom	15'0" x 19'2"	285 sq. ft	Yes
2	Hall	8'2" x 3'7"	30 sq. ft	Yes
3	Garage	18'5" x 19'3"	356 sq. ft	No
4	Hall	6'4" x 7'10"	50 sq. ft	Yes
5	Entry	5'8" x 4'5"	25 sq. ft	Yes
6	Wc	6'1" x 4'8"	27 sq. ft	Yes
7	Carport	12'2" x 20'0"	244 sq. ft	No
8	Breakfast Nook	17'6" x 19'8"	259 sq. ft	Yes
9	Dining Room	14'3" x 13'0"	185 sq. ft	Yes
10	Kitchen	16'1" x 11'11"	181 sq. ft	Yes
11	Office	10'11" x 13'8"	148 sq. ft	Yes

**2871 Alentina Court, League City, Texas 77573,
United States**

#	Room name	Dimensions	Area (sqft)	Counted as Living Area
12	Garage	10'2" x 19'0"	193 sq. ft	No
13	Pantry	8'5" x 4'5"	37 sq. ft	Yes
14	Primary Bath	12'4" x 15'2"	152 sq. ft	Yes
15	Laundry	8'5" x 5'5"	46 sq. ft	Yes
16	Living Room	18'6" x 19'7"	388 sq. ft	Yes
17	Foyer	9'2" x 19'10"	228 sq. ft	Yes
18	Wc	3'4" x 5'3"	18 sq. ft	Yes
19	Butler's Pantry	5'8" x 5'5"	31 sq. ft	Yes
20	W.i.c.	12'4" x 12'0"	113 sq. ft	Yes

2871 Alentina Court, League City, Texas 77573, United States



Room Dimensions

Floor 2

Total sqft: 2385

Living area: 1669

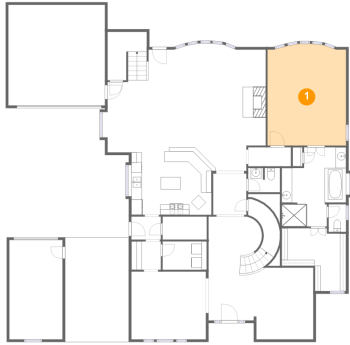
#	Room name	Dimensions	Area (sqft)	Counted as Living Area
21	Open To Below	20'3" x 19'10"	332 sq. ft	No
22	Open To Below	15'8" x 20'7"	318 sq. ft	No
23	Bath	8'2" x 5'9"	47 sq. ft	Yes
24	W.i.c.	6'0" x 6'2"	37 sq. ft	Yes
25	Bath	7'0" x 5'2"	29 sq. ft	Yes
26	W.i.c.	5'9" x 4'11"	28 sq. ft	Yes
27	Bath	7'0" x 8'11"	57 sq. ft	Yes
28	Bath	4'1" x 5'0"	20 sq. ft	Yes
29	Bedroom	12'4" x 12'10"	146 sq. ft	Yes
30	Bedroom	16'7" x 17'9"	217 sq. ft	Yes
31	Loft	32'7" x 16'1"	454 sq. ft	Yes

**2871 Alentina Court, League City, Texas 77573,
United States**

#	Room name	Dimensions	Area (sqft)	Counted as Living Area
32	Hall	11'4" x 4'3"	48 sq. ft	Yes
33	W.i.c.	4'1" x 6'4"	26 sq. ft	Yes
34	Bedroom	10'4" x 14'5"	137 sq. ft	Yes
35	Reading Room	11'11" x 13'5"	233 sq. ft	Yes

2871 Alentina Court, League City, Texas 77573, United States

1 Floor 1 - Primary Bedroom



Dimensions: 15'0" x 19'2"
Area: 285 sq. ft
Counted as Living Area:
Yes

Heated: Yes
Finished: Yes
Enclosed: Yes
Contiguous:
Yes
Permitted: Yes
Wet Space: No
Addition: No
Conversion: No

2 Floor 1 - Hall

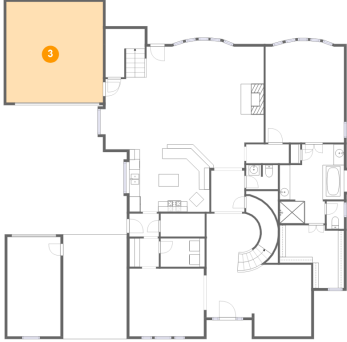


Dimensions: 8'2" x 3'7"
Area: 30 sq. ft
Counted as Living Area:
Yes

Heated: Yes
Finished: Yes
Enclosed: Yes
Contiguous:
Yes
Permitted: Yes
Wet Space: No
Addition: No
Conversion: No

2871 Alentina Court, League City, Texas 77573, United States

3 Floor 1 - Garage



Dimensions: 18'5" x 19'3"
Area: 356 sq. ft
Counted as Living Area: No

Heated: No
Finished: No
Enclosed: Yes
Contiguous: Yes
Permitted: Yes
Wet Space: No
Addition: No
Conversion: No

4 Floor 1 - Hall



Dimensions: 6'4" x 7'10"
Area: 50 sq. ft
Counted as Living Area:
Yes

Heated: Yes
Finished: Yes
Enclosed: Yes
Contiguous:
Yes
Permitted: Yes
Wet Space: No
Addition: No
Conversion: No

5 Floor 1 - Entry



Dimensions: 5'8" x 4'5"
Area: 25 sq. ft
Counted as Living Area:
Yes

Heated: Yes
Finished: Yes
Enclosed: Yes
Contiguous:
Yes
Permitted: Yes
Wet Space: No
Addition: No
Conversion: No

2871 Alentina Court, League City, Texas 77573, United States

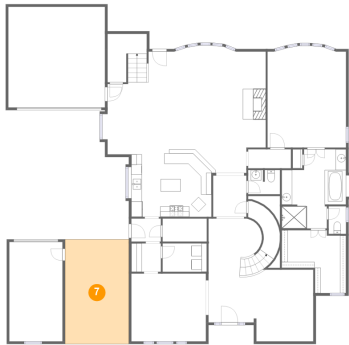
6 Floor 1 - Wc



Dimensions: 6'1" x 4'8"
Area: 27 sq. ft
Counted as Living Area:
Yes

Heated: Yes
Finished: Yes
Enclosed: Yes
Contiguous:
Yes
Permitted: Yes
Wet Space: Yes
Addition: No
Conversion: No

7 Floor 1 - Carport



Dimensions: 12'2" x 20'0"
Area: 244 sq. ft
Counted as Living Area: No

Heated: No
Finished: Yes
Enclosed: No
Contiguous: Yes
Permitted: Yes
Wet Space: No
Addition: No
Conversion: No

8 Floor 1 - Breakfast Nook



Dimensions: 17'6" x 19'8"
Area: 259 sq. ft
Counted as Living Area:
Yes

Heated: Yes
Finished: Yes
Enclosed: Yes
Contiguous:
Yes
Permitted: Yes
Wet Space: No
Addition: No
Conversion: No

2871 Alentina Court, League City, Texas 77573, United States

9 Floor 1 - Dining Room



Dimensions: 14'3" x 13'0"
Area: 185 sq. ft
Counted as Living Area:
Yes

Heated: Yes
Finished: Yes
Enclosed: Yes
Contiguous:
Yes
Permitted: Yes
Wet Space: No
Addition: No
Conversion: No

10 Floor 1 - Kitchen



Dimensions: 16'1" x 11'11"
Area: 181 sq. ft
Counted as Living Area:
Yes

Heated: Yes
Finished: Yes
Enclosed: Yes
Contiguous:
Yes
Permitted: Yes
Wet Space: No
Addition: No
Conversion: No

11 Floor 1 - Office



Dimensions: 10'11" x 13'8"
Area: 148 sq. ft
Counted as Living Area:
Yes

Heated: Yes
Finished: Yes
Enclosed: Yes
Contiguous:
Yes
Permitted: Yes
Wet Space: No
Addition: No
Conversion: No

2871 Alentina Court, League City, Texas 77573, United States

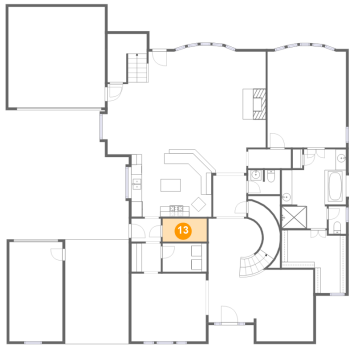
12 Floor 1 - Garage



Dimensions: 10'2" x 19'0"
Area: 193 sq. ft
Counted as Living Area: No

Heated: No
Finished: No
Enclosed: Yes
Contiguous: Yes
Permitted: Yes
Wet Space: No
Addition: No
Conversion: No

13 Floor 1 - Pantry



Dimensions: 8'5" x 4'5"
Area: 37 sq. ft
Counted as Living Area:
Yes

Heated: Yes
Finished: Yes
Enclosed: Yes
Contiguous:
Yes
Permitted: Yes
Wet Space: No
Addition: No
Conversion: No

14 Floor 1 - Primary Bath



Dimensions: 12'4" x 15'2"
Area: 152 sq. ft
Counted as Living Area:
Yes

Heated: Yes
Finished: Yes
Enclosed: Yes
Contiguous:
Yes
Permitted: Yes
Wet Space: Yes
Addition: No
Conversion: No

2871 Alentina Court, League City, Texas 77573, United States

15 Floor 1 - Laundry



Dimensions: 8'5" x 5'5"
Area: 46 sq. ft
Counted as Living Area:
Yes

Heated: Yes
Finished: Yes
Enclosed: Yes
Contiguous:
Yes
Permitted: Yes
Wet Space: No
Addition: No
Conversion: No

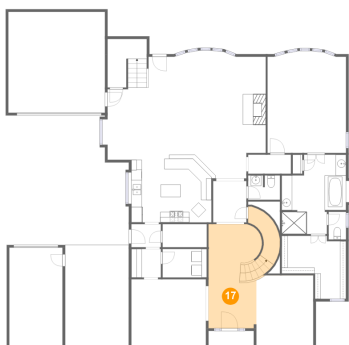
16 Floor 1 - Living Room



Dimensions: 18'6" x 19'7"
Area: 388 sq. ft
Counted as Living Area:
Yes

Heated: Yes
Finished: Yes
Enclosed: Yes
Contiguous:
Yes
Permitted: Yes
Wet Space: No
Addition: No
Conversion: No

17 Floor 1 - Foyer



Dimensions: 9'2" x 19'10"
Area: 228 sq. ft
Counted as Living Area:
Yes

Heated: Yes
Finished: Yes
Enclosed: Yes
Contiguous:
Yes
Permitted: Yes
Wet Space: No
Addition: No
Conversion: No

2871 Alentina Court, League City, Texas 77573, United States

18 Floor 1 - Wc



Dimensions: 3'4" x 5'3"
Area: 18 sq. ft
Counted as Living Area:
Yes

Heated: Yes
Finished: Yes
Enclosed: Yes
Contiguous:
Yes
Permitted: Yes
Wet Space: Yes
Addition: No
Conversion: No

19 Floor 1 - Butler's Pantry



Dimensions: 5'8" x 5'5"
Area: 31 sq. ft
Counted as Living Area:
Yes

Heated: Yes
Finished: Yes
Enclosed: Yes
Contiguous:
Yes
Permitted: Yes
Wet Space: No
Addition: No
Conversion: No

20 Floor 1 - W.i.c.



Dimensions: 12'4" x 12'0"
Area: 113 sq. ft
Counted as Living Area:
Yes

Heated: Yes
Finished: Yes
Enclosed: Yes
Contiguous:
Yes
Permitted: Yes
Wet Space: No
Addition: No
Conversion: No

2871 Alentina Court, League City, Texas 77573, United States

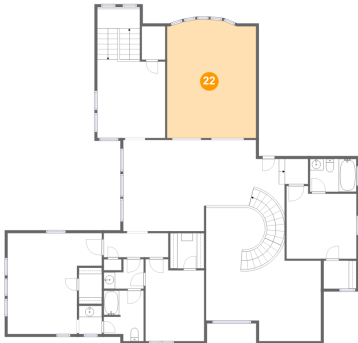
21 Floor 2 - Open To Below



Dimensions: 20'3" x 19'10"
Area: 332 sq. ft
Counted as Living Area: No

Heated: No
Finished: No
Enclosed: No
Contiguous: Yes
Permitted: No
Wet Space: No
Addition: No
Conversion: No

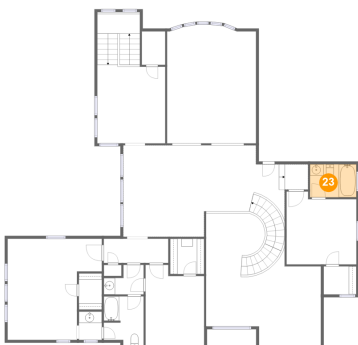
22 Floor 2 - Open To Below



Dimensions: 15'8" x 20'7"
Area: 318 sq. ft
Counted as Living Area: No

Heated: No
Finished: No
Enclosed: No
Contiguous: Yes
Permitted: No
Wet Space: No
Addition: No
Conversion: No

23 Floor 2 - Bath



Dimensions: 8'2" x 5'9"
Area: 47 sq. ft
Counted as Living Area:
Yes

Heated: Yes
Finished: Yes
Enclosed: Yes
Contiguous:
Yes
Permitted: Yes
Wet Space: Yes
Addition: No
Conversion: No

2871 Alentina Court, League City, Texas 77573, United States

24 Floor 2 - W.i.c.



Dimensions: 6'0" x 6'2"
Area: 37 sq. ft
Counted as Living Area:
Yes

Heated: Yes
Finished: Yes
Enclosed: Yes
Contiguous:
Yes
Permitted: Yes
Wet Space: No
Addition: No
Conversion: No

25 Floor 2 - Bath



Dimensions: 7'0" x 5'2"
Area: 29 sq. ft
Counted as Living Area:
Yes

Heated: Yes
Finished: Yes
Enclosed: Yes
Contiguous:
Yes
Permitted: Yes
Wet Space: Yes
Addition: No
Conversion: No

26 Floor 2 - W.i.c.



Dimensions: 5'9" x 4'11"
Area: 28 sq. ft
Counted as Living Area:
Yes

Heated: Yes
Finished: Yes
Enclosed: Yes
Contiguous:
Yes
Permitted: Yes
Wet Space: No
Addition: No
Conversion: No

2871 Alentina Court, League City, Texas 77573, United States

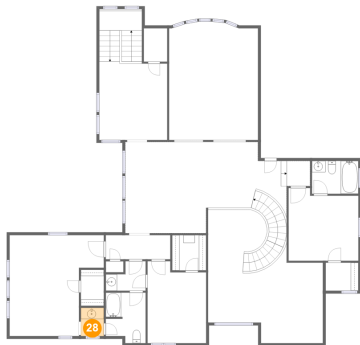
27 Floor 2 - Bath



Dimensions: 7'0" x 8'11"
Area: 57 sq. ft
Counted as Living Area:
Yes

Heated: Yes
Finished: Yes
Enclosed: Yes
Contiguous:
Yes
Permitted: Yes
Wet Space: Yes
Addition: No
Conversion: No

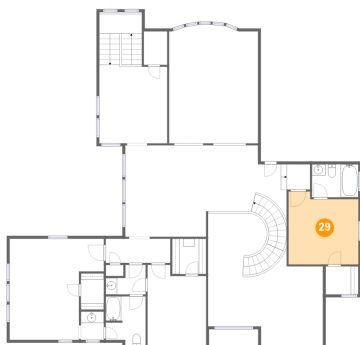
28 Floor 2 - Bath



Dimensions: 4'1" x 5'0"
Area: 20 sq. ft
Counted as Living Area:
Yes

Heated: Yes
Finished: Yes
Enclosed: Yes
Contiguous:
Yes
Permitted: Yes
Wet Space: Yes
Addition: No
Conversion: No

29 Floor 2 - Bedroom

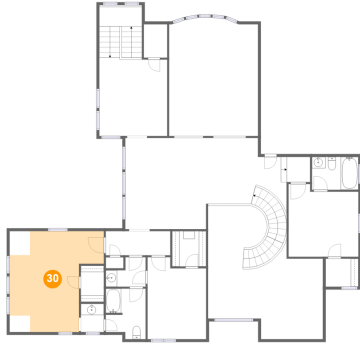


Dimensions: 12'4" x 12'10"
Area: 146 sq. ft
Counted as Living Area:
Yes

Heated: Yes
Finished: Yes
Enclosed: Yes
Contiguous:
Yes
Permitted: Yes
Wet Space: No
Addition: No
Conversion: No

2871 Alentina Court, League City, Texas 77573, United States

30 Floor 2 - Bedroom



Dimensions: 16'7" x 17'9"
Area: 217 sq. ft
Counted as Living Area:
Yes

Heated: Yes
Finished: Yes
Enclosed: Yes
Contiguous:
Yes
Permitted: Yes
Wet Space: No
Addition: No
Conversion: No

31 Floor 2 - Loft



Dimensions: 32'7" x 16'1"
Area: 454 sq. ft
Counted as Living Area:
Yes

Heated: Yes
Finished: Yes
Enclosed: Yes
Contiguous:
Yes
Permitted: Yes
Wet Space: No
Addition: No
Conversion: No

32 Floor 2 - Hall



Dimensions: 11'4" x 4'3"
Area: 48 sq. ft
Counted as Living Area:
Yes

Heated: Yes
Finished: Yes
Enclosed: Yes
Contiguous:
Yes
Permitted: Yes
Wet Space: No
Addition: No
Conversion: No

2871 Alentina Court, League City, Texas 77573, United States

33 Floor 2 - W.i.c.



Dimensions: 4'1" x 6'4"
Area: 26 sq. ft
Counted as Living Area:
Yes

Heated: Yes
Finished: Yes
Enclosed: Yes
Contiguous:
Yes
Permitted: Yes
Wet Space: No
Addition: No
Conversion: No

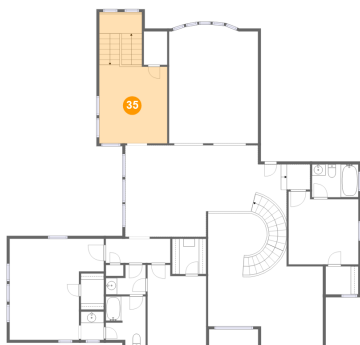
34 Floor 2 - Bedroom



Dimensions: 10'4" x 14'5"
Area: 137 sq. ft
Counted as Living Area:
Yes

Heated: Yes
Finished: Yes
Enclosed: Yes
Contiguous:
Yes
Permitted: Yes
Wet Space: No
Addition: No
Conversion: No

35 Floor 2 - Reading Room



Dimensions: 11'11" x 13'5"
Area: 233 sq. ft
Counted as Living Area:
Yes

Heated: Yes
Finished: Yes
Enclosed: Yes
Contiguous:
Yes
Permitted: Yes
Wet Space: No
Addition: No
Conversion: No