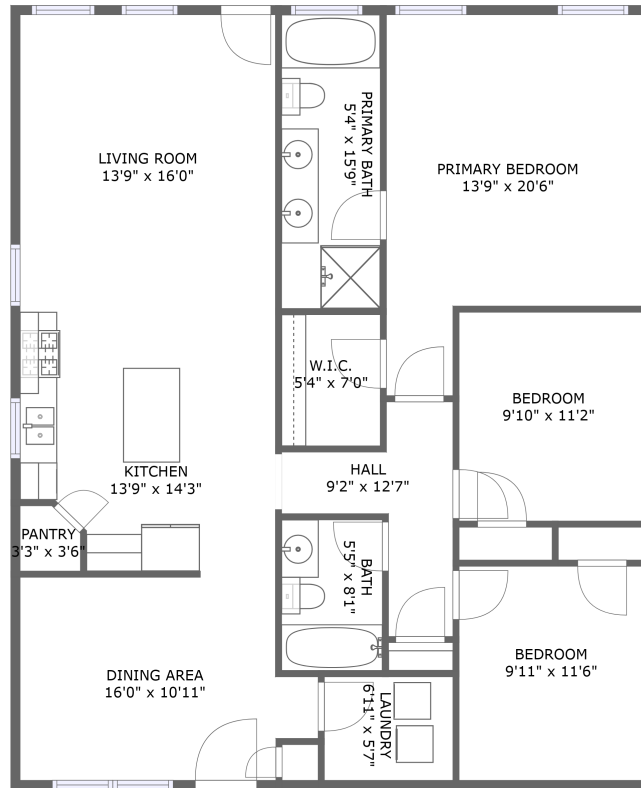


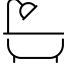



16827 Tree Star Lane, Cypress, Harris County, Texas, United States, 77429



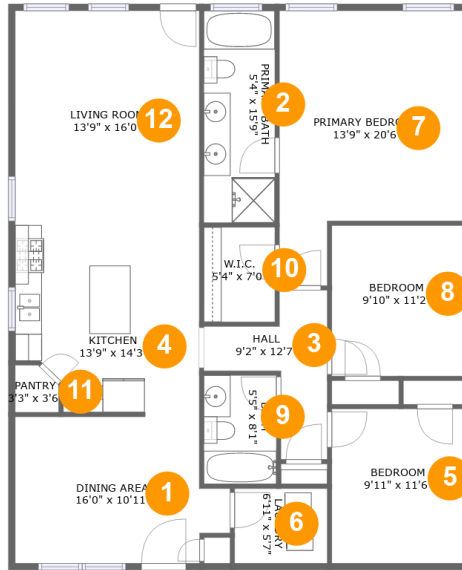
FLOOR 1

Property Summary

 **0** garages  **3** bedrooms  **2** bathrooms  **0** half baths

 **1** floors  **1,452** Gross Living Area sqft  **1,452** total sqft

16827 Tree Star Lane, Cypress, Harris County, Texas, United States, 77429



Room Dimensions

Floor 1

Total sqft: 1452

Living area: 1452

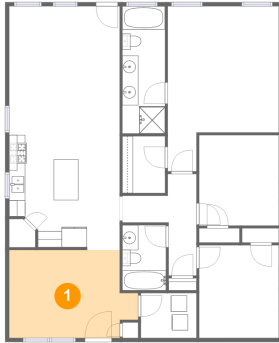
#	Room name	Dimensions	Area (sqft)	Counted as Living Area
1	Dining Area	16'0" x 10'11"	157 sq. ft	Yes
2	Primary Bath	5'4" x 15'9"	84 sq. ft	Yes
3	Hall	9'2" x 12'7"	63 sq. ft	Yes
4	Kitchen	13'9" x 14'3"	180 sq. ft	Yes
5	Bedroom	9'11" x 11'6"	114 sq. ft	Yes
6	Laundry	6'11" x 5'7"	38 sq. ft	Yes
7	Primary Bedroom	13'9" x 20'6"	233 sq. ft	Yes
8	Bedroom	9'10" x 11'2"	111 sq. ft	Yes
9	Bath	5'5" x 8'1"	44 sq. ft	Yes
10	W.i.c.	5'4" x 7'0"	37 sq. ft	Yes
11	Pantry	3'3" x 3'6"	10 sq. ft	Yes

**16827 Tree Star Lane, Cypress, Harris County,
Texas, United States, 77429**

#	Room name	Dimensions	Area (sqft)	Counted as Living Area
12	Living Room	13'9" x 16'0"	219 sq. ft	Yes

16827 Tree Star Lane, Cypress, Harris County, Texas, United States, 77429

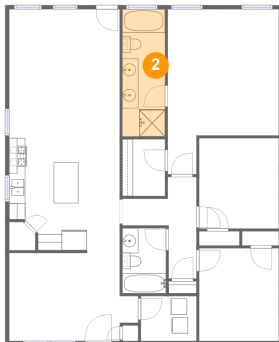
1 Floor 1 - Dining Area



Dimensions: 16'0" x 10'11"
Area: 157 sq. ft
Counted as Living Area:
Yes

Heated: Yes
Finished: Yes
Enclosed: Yes
Contiguous:
Yes
Permitted: Yes
Wet Space: No
Addition: No
Conversion: No

2 Floor 1 - Primary Bath

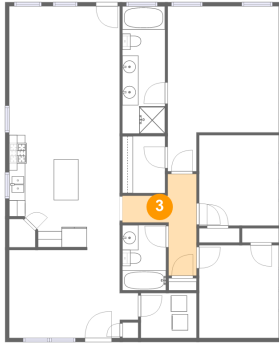


Dimensions: 5'4" x 15'9"
Area: 84 sq. ft
Counted as Living Area:
Yes

Heated: Yes
Finished: Yes
Enclosed: Yes
Contiguous:
Yes
Permitted: Yes
Wet Space: Yes
Addition: No
Conversion: No

16827 Tree Star Lane, Cypress, Harris County, Texas, United States, 77429

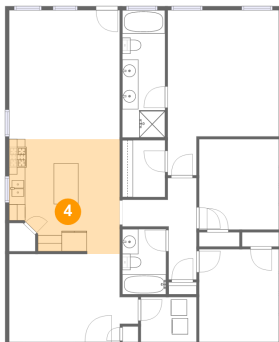
3 Floor 1 - Hall



Dimensions: 9'2" x 12'7"
Area: 63 sq. ft
Counted as Living Area:
Yes

Heated: Yes
Finished: Yes
Enclosed: Yes
Contiguous:
Yes
Permitted: Yes
Wet Space: No
Addition: No
Conversion: No

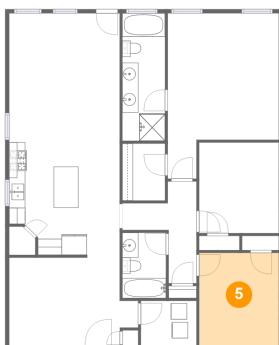
4 Floor 1 - Kitchen



Dimensions: 13'9" x 14'3"
Area: 180 sq. ft
Counted as Living Area:
Yes

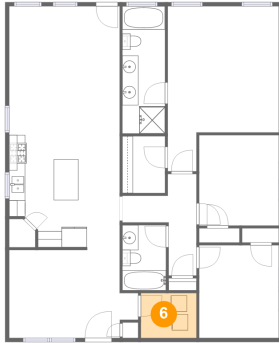
Heated: Yes
Finished: Yes
Enclosed: Yes
Contiguous:
Yes
Permitted: Yes
Wet Space: No
Addition: No
Conversion: No

5 Floor 1 - Bedroom



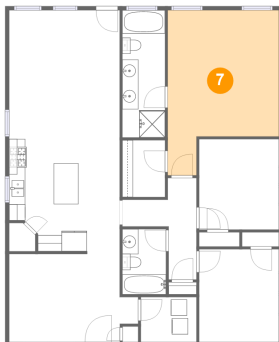
Dimensions: 9'11" x 11'6"
Area: 114 sq. ft
Counted as Living Area:
Yes

Heated: Yes
Finished: Yes
Enclosed: Yes
Contiguous:
Yes
Permitted: Yes
Wet Space: No
Addition: No
Conversion: No

**16827 Tree Star Lane, Cypress, Harris County,
Texas, United States, 77429****6 Floor 1 - Laundry**

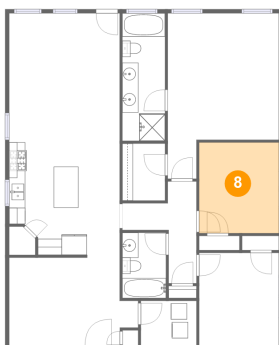
Dimensions: 6'11" x 5'7"
Area: 38 sq. ft
Counted as Living Area:
Yes

Heated: Yes
Finished: Yes
Enclosed: Yes
Contiguous:
Yes
Permitted: Yes
Wet Space: No
Addition: No
Conversion: No

7 Floor 1 - Primary Bedroom

Dimensions: 13'9" x 20'6"
Area: 233 sq. ft
Counted as Living Area:
Yes

Heated: Yes
Finished: Yes
Enclosed: Yes
Contiguous:
Yes
Permitted: Yes
Wet Space: No
Addition: No
Conversion: No

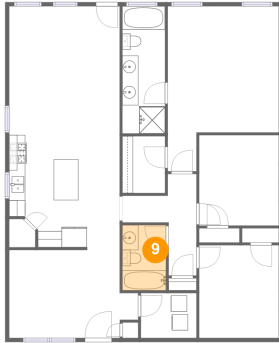
8 Floor 1 - Bedroom

Dimensions: 9'10" x 11'2"
Area: 111 sq. ft
Counted as Living Area:
Yes

Heated: Yes
Finished: Yes
Enclosed: Yes
Contiguous:
Yes
Permitted: Yes
Wet Space: No
Addition: No
Conversion: No

16827 Tree Star Lane, Cypress, Harris County, Texas, United States, 77429

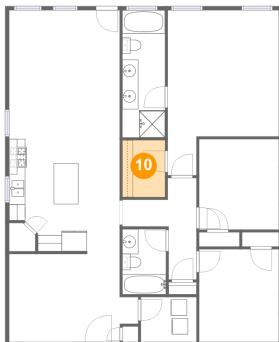
9 Floor 1 - Bath



Dimensions: 5'5" x 8'1"
Area: 44 sq. ft
Counted as Living Area:
Yes

Heated: Yes
Finished: Yes
Enclosed: Yes
Contiguous:
Yes
Permitted: Yes
Wet Space: Yes
Addition: No
Conversion: No

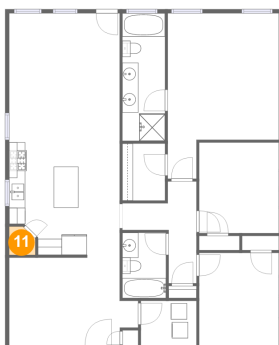
10 Floor 1 - W.i.c.



Dimensions: 5'4" x 7'0"
Area: 37 sq. ft
Counted as Living Area:
Yes

Heated: Yes
Finished: Yes
Enclosed: Yes
Contiguous:
Yes
Permitted: Yes
Wet Space: No
Addition: No
Conversion: No

11 Floor 1 - Pantry

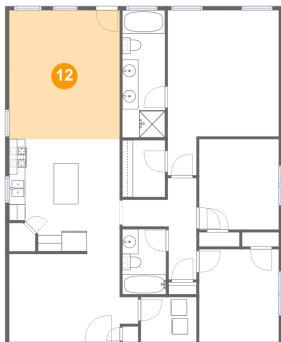


Dimensions: 3'3" x 3'6"
Area: 10 sq. ft
Counted as Living Area:
Yes

Heated: Yes
Finished: Yes
Enclosed: Yes
Contiguous:
Yes
Permitted: Yes
Wet Space: No
Addition: No
Conversion: No

16827 Tree Star Lane, Cypress, Harris County, Texas, United States, 77429

12 Floor 1 - Living Room



Dimensions: 13'9" x 16'0"

Area: 219 sq. ft

Counted as Living Area:
Yes

Heated: Yes

Finished: Yes

Enclosed: Yes

Contiguous:
Yes

Permitted: Yes

Wet Space: No

Addition: No

Conversion: No