

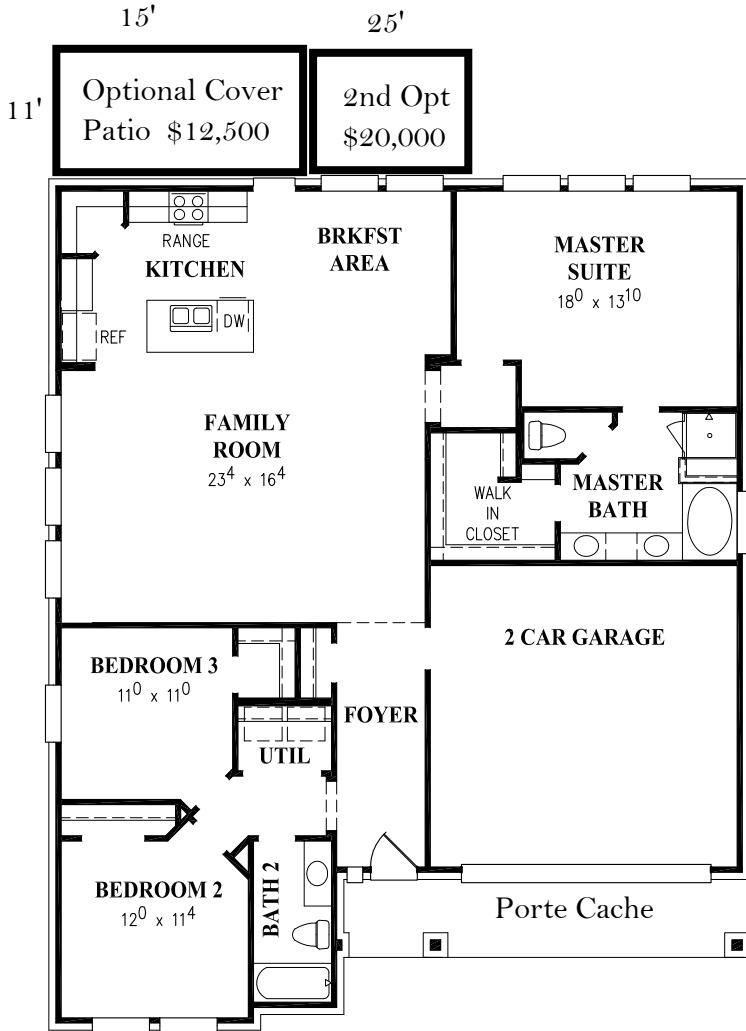


# BAYWAY HOMES

## BUILT BETTER



Lake Cove 1783 sqft



**Elevation "A"** \$3,000 additional All Brick



**Elevation "B"** \$5,000 additional Brick & Stone



**Elevation "C"** Included in price



**Elevation "D"** \$6,000 additional All Brick + Larger Garage

Floor plan shown is an artists rendering only. BayWay Homes reserves the right to make changes in plans, specifications and to substitute materials of similar quality without notice or prior obligation. Room dimensions are approximate.