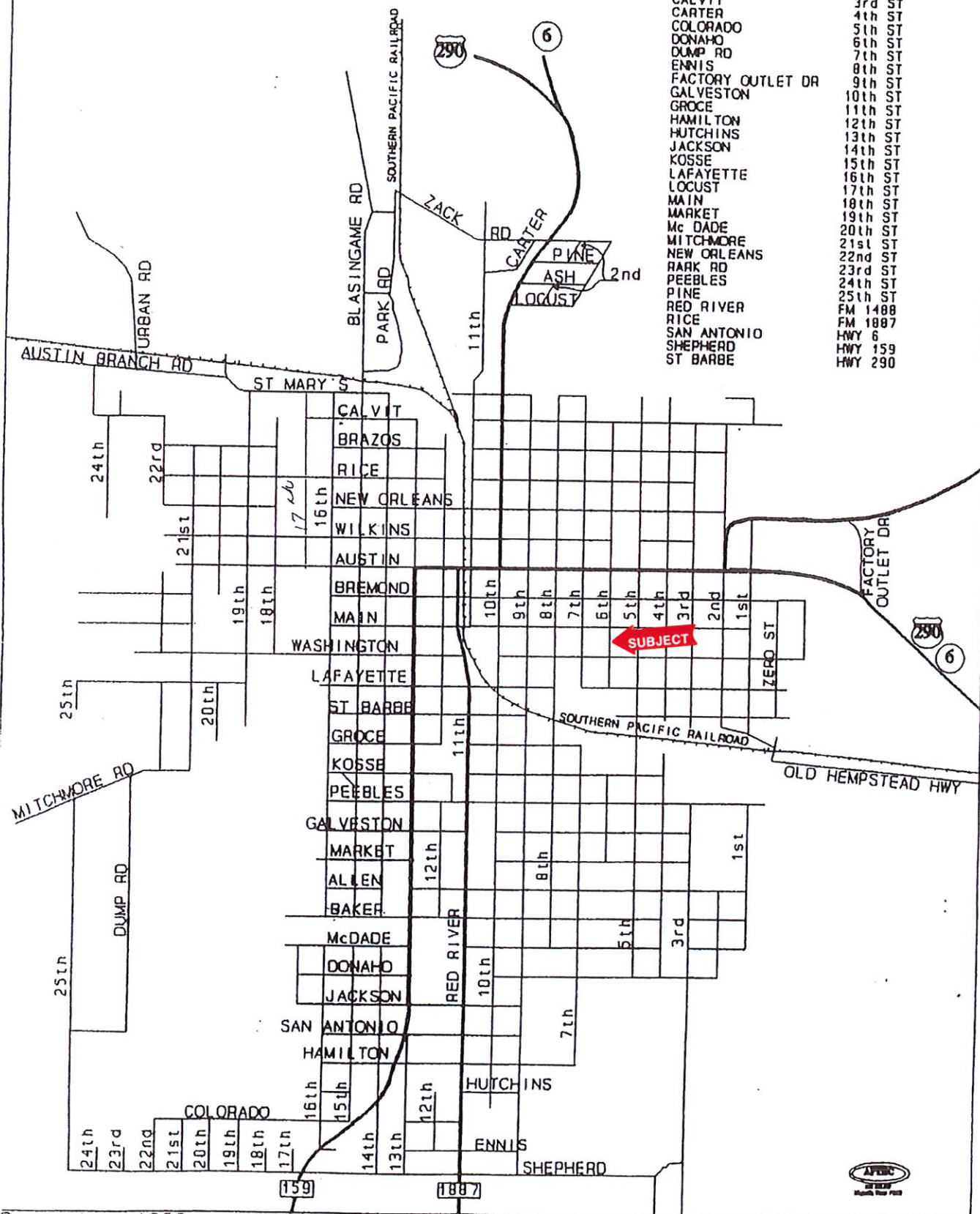
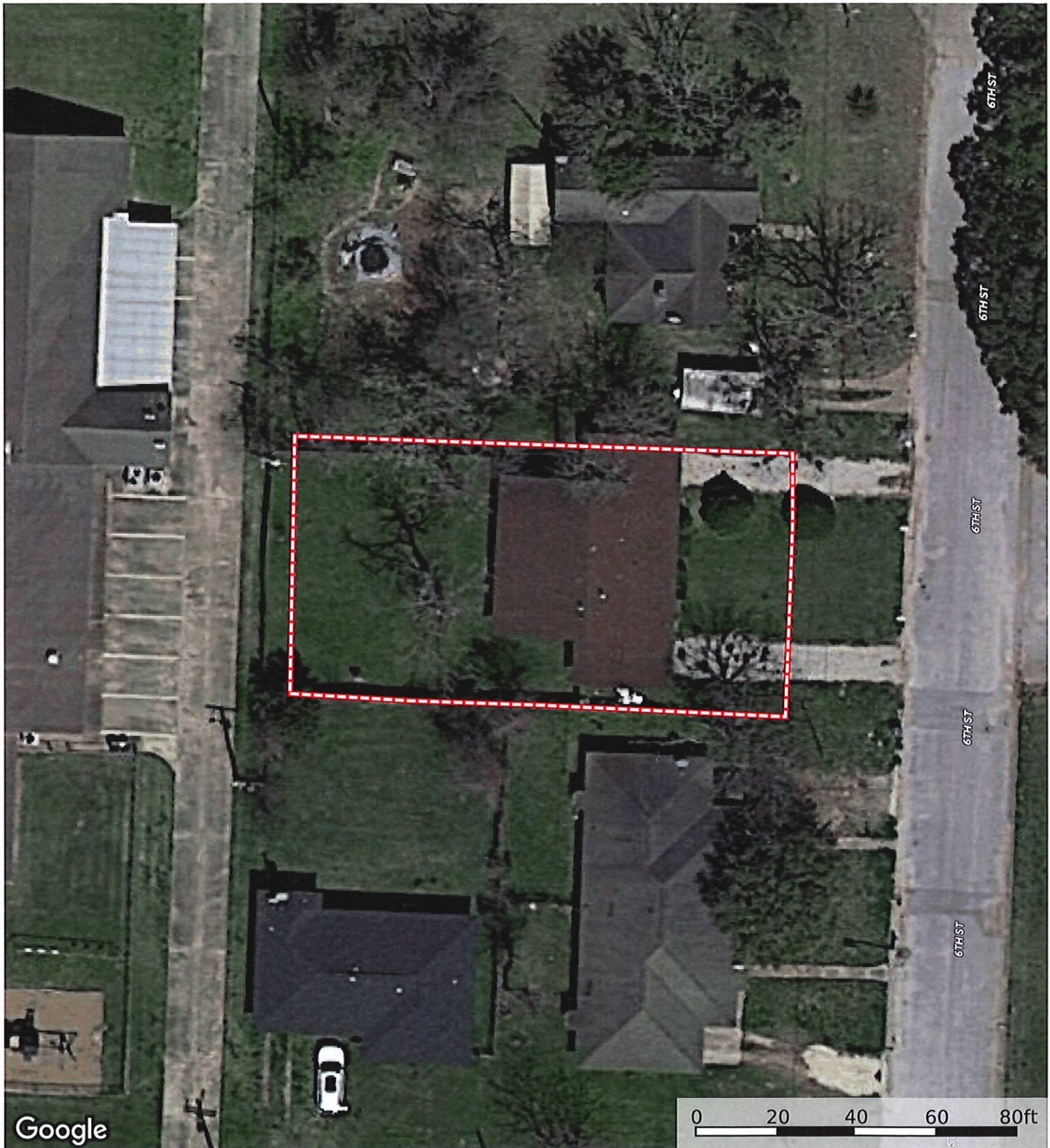


# HEMPSTEAD

- ALLEN
- ASH
- AUSTIN
- AUSTIN BRANCH
- BAKER
- BLASINGAME
- BRAZOS
- BREMOND
- CALVIT
- CARTER
- COLORADO
- DONAHU
- DUMP RD
- ENNIS
- FACTORY OUTLET DR
- GALVESTON
- GROCE
- HAMILTON
- HUTCHINS
- JACKSON
- KOSSE
- LAFAYETTE
- LOCUST
- MAIN
- MARKET
- Mc DADE
- MITCHMORE
- NEW ORLEANS
- PARK RD
- PEEBLES
- PINE
- RED RIVER
- RICE
- SAN ANTONIO
- SHEPHERD
- ST BARBE
- ST MARY'S
- URBAN
- WASHINGTON
- WILKINS
- ZACK RD
- ZERO ST
- 1st ST
- 2nd ST
- 3rd ST
- 4th ST
- 5th ST
- 6th ST
- 7th ST
- 8th ST
- 9th ST
- 10th ST
- 11th ST
- 12th ST
- 13th ST
- 14th ST
- 15th ST
- 16th ST
- 17th ST
- 18th ST
- 19th ST
- 20th ST
- 21st ST
- 22nd ST
- 23rd ST
- 24th ST
- 25th ST
- FM 1408
- FM 1887
- HWY 6
- HWY 159
- HWY 290

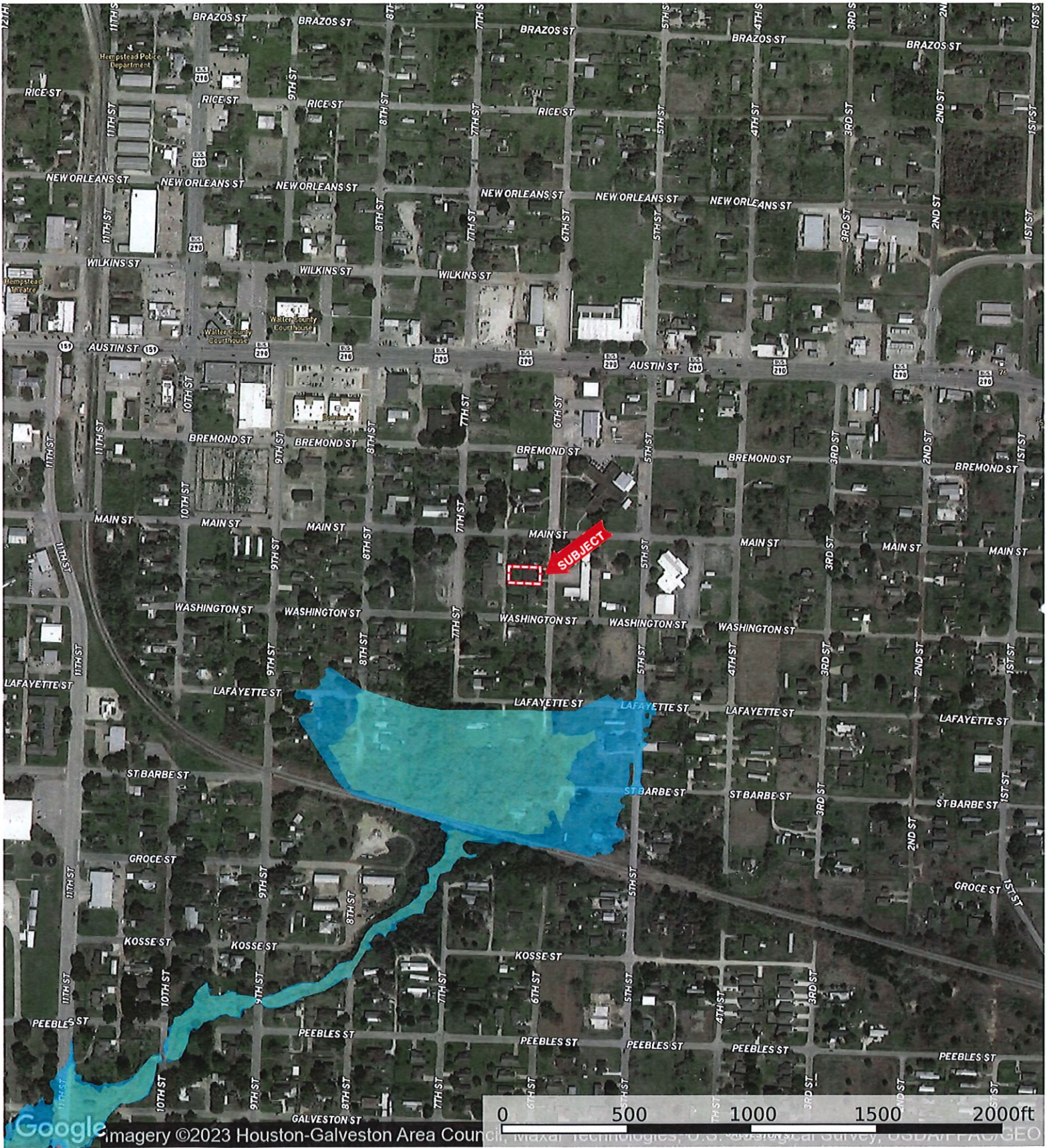


1025 6th St. #B  
Waller County, Texas, AC +/-



 Boundary

1025 6th St. #B  
Waller County, Texas, AC +/-



- Boundary
- 100 Year Floodplain
- 500 Year Floodplain
- Floodway
- Special
- Unmapped/ Not Included