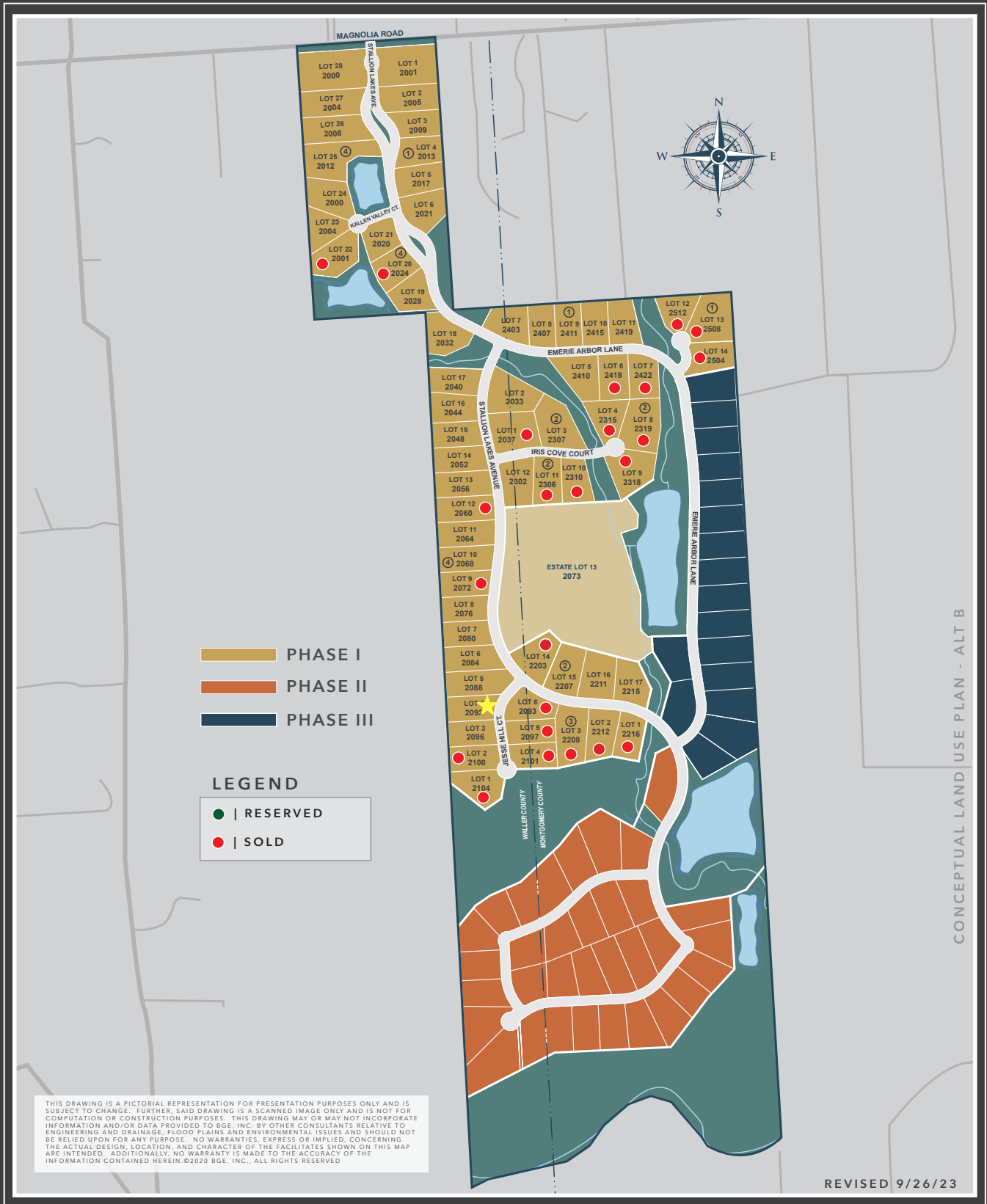


A KICKERILLO & BEAN DEVELOPMENT

STALLION LAKES



- PHASE I
- PHASE II
- PHASE III

LEGEND

- | RESERVED
- | SOLD

THIS DRAWING IS A PICTORIAL REPRESENTATION FOR PRESENTATION PURPOSES ONLY AND IS SUBJECT TO CHANGE. FURTHER, SAID DRAWING IS A SCANNED IMAGE ONLY AND IS NOT FOR COMPUTATION OR CONSTRUCTION PURPOSES. THIS DRAWING MAY OR MAY NOT INCORPORATE INFORMATION AND/OR DATA PROVIDED TO BGE, INC. BY OTHER CONSULTANTS RELATIVE TO ENGINEERING AND DRAINAGE, FLOOD PLAINS AND ENVIRONMENTAL ISSUES AND SHOULD NOT BE RELIED UPON FOR ANY PURPOSE. NO WARRANTIES, EXPRESS OR IMPLIED, CONCERNING THE ACTUAL DESIGN, LOCATION, AND CHARACTER OF THE FACILITIES SHOWN ON THIS MAP ARE INTENDED. ADDITIONALLY, NO WARRANTY IS MADE TO THE ACCURACY OF THE INFORMATION CONTAINED HEREIN. ©2020 BGE, INC., ALL RIGHTS RESERVED.

CONCEPTUAL LAND USE PLAN - ALT B

REVISED 9/26/23

STALLIONLAKES.COM

WALLER COUNTY AND MONTGOMERY COUNTY, TX | ±394.2 ACRES OF LAND