



MARIE VILLAGE

Jonathan

PLAN 1200

- 1,200 sq. ft.
- 3 Bedrooms
- 2 Bathrooms
- Utility Closet
- Large Pantry
- Living Room and Dining Area adjacent
- Gourmet Eat In Galley Kitchen
- Dishwasher Included
- Primary Suite at rear of home
- Large Front Porch Area

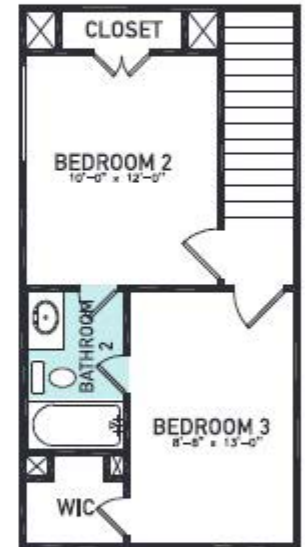
Optional:

- Kitchen Island
- Kitchen Window
- Primary Bath Door

D·R·HORTON
America's Builder



FIRST FLOOR PLAN



SECOND FLOOR PLAN

