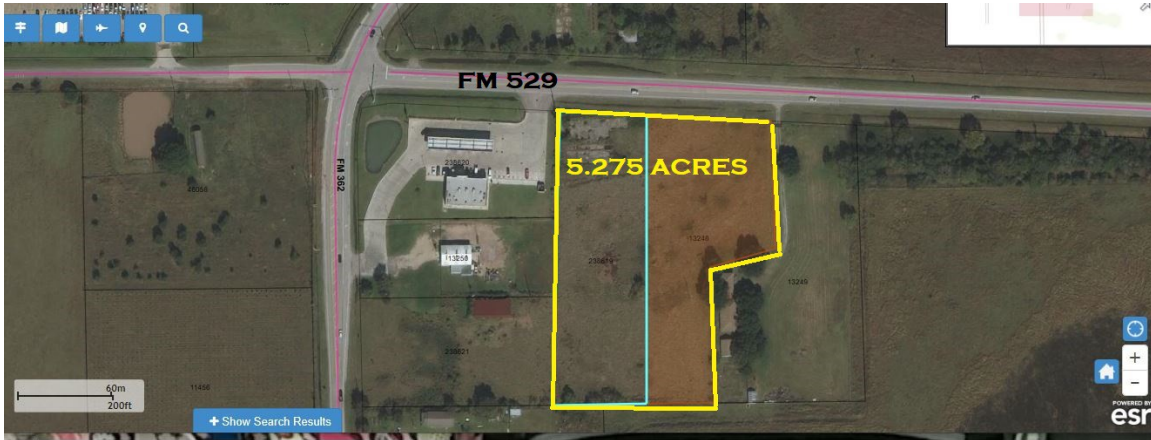
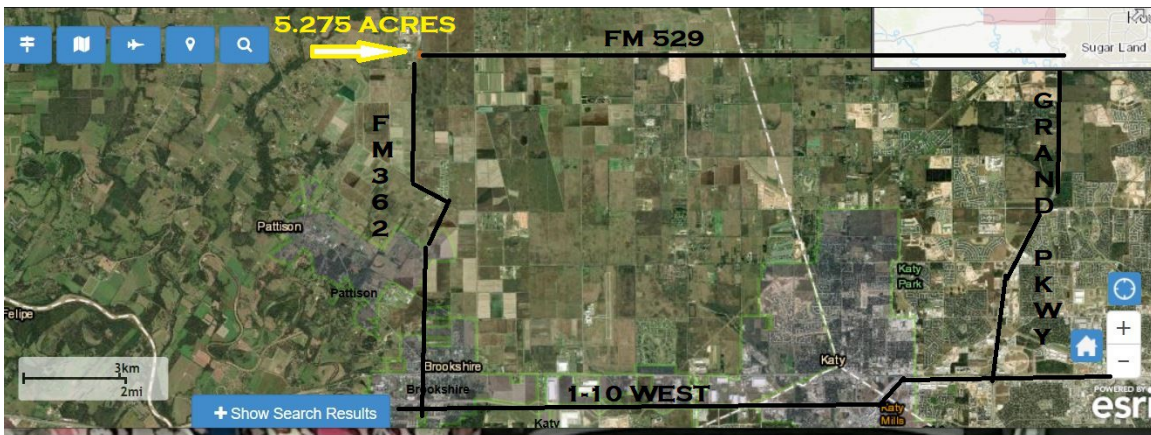




COMMERCIAL & RESIDENTIAL REAL ESTATE



5.275 ACRES.. 34005 FM 529.. CAN BE DIVIDED...UTILITIES AVAILABLE FROM HAMMOUD MOUND UTILITIES.. OWNER LOOKING FOR LONG TERM GROUND LEASE FEDERAL OPPORTUNITY ZONE. PRICE NEGOTIABLE.



**WALLACE EVERITT, BROKER
281-375-5575**

**INFO@SOUTHWESTPROPERTIES.US
WWW.SOUTHWESTPROPERTIES.US**