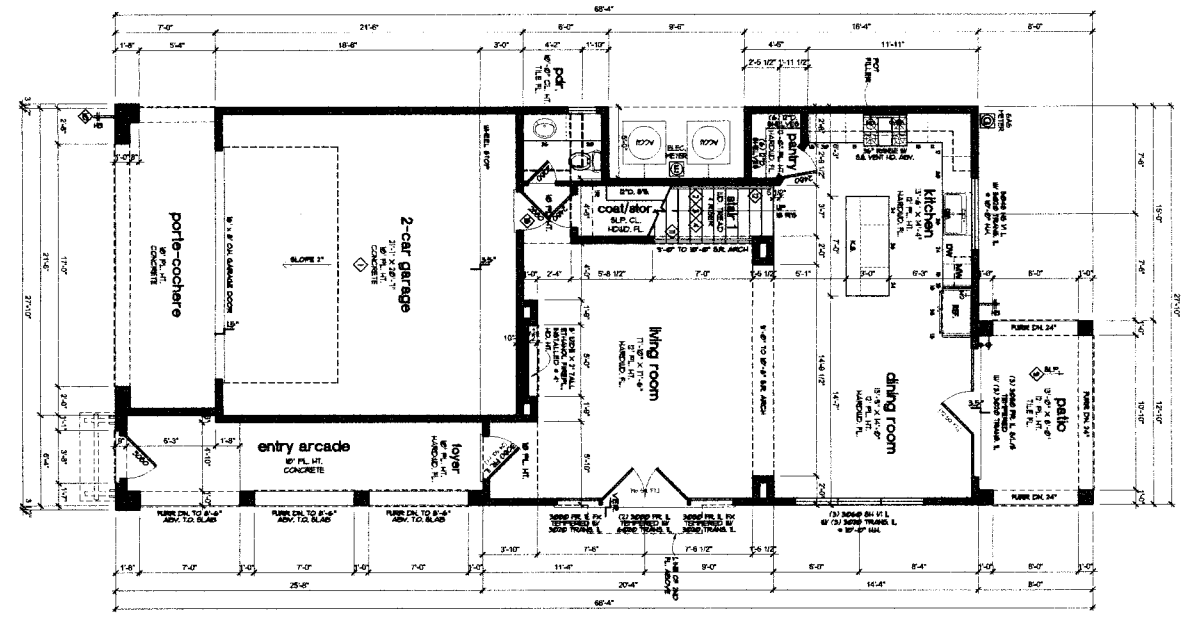


**PLAN GENERAL NOTE**

1. DO NOT SCALE DRAWINGS, WRITE IN PENCIL OR MAKE ANY UNNECESSARY CORRECTIONS. UNLESS OTHERWISE NOTED, ALL DIMENSIONS SHALL BE IN COMPLIANCE WITH THE FOLLOWING:
2. DIMENSIONS AND CONSTRUCTION SHALL BE IN COMPLIANCE WITH THE FOLLOWING:
  21. INTERNATIONAL BUILDING CODE (IBC) SECTION 5
  22. INTERNATIONAL BUILDING CODE (IBC) SECTION 10
  23. INTERNATIONAL BUILDING CODE (IBC) SECTION 15
  24. INTERNATIONAL BUILDING CODE (IBC) SECTION 20
  25. INTERNATIONAL BUILDING CODE (IBC) SECTION 25
  26. INTERNATIONAL BUILDING CODE (IBC) SECTION 30
  27. INTERNATIONAL BUILDING CODE (IBC) SECTION 35
  28. INTERNATIONAL BUILDING CODE (IBC) SECTION 40
  29. INTERNATIONAL BUILDING CODE (IBC) SECTION 45
  30. INTERNATIONAL BUILDING CODE (IBC) SECTION 50
  31. INTERNATIONAL BUILDING CODE (IBC) SECTION 55
  32. INTERNATIONAL BUILDING CODE (IBC) SECTION 60
  33. INTERNATIONAL BUILDING CODE (IBC) SECTION 65
  34. INTERNATIONAL BUILDING CODE (IBC) SECTION 70
  35. INTERNATIONAL BUILDING CODE (IBC) SECTION 75
  36. INTERNATIONAL BUILDING CODE (IBC) SECTION 80
  37. INTERNATIONAL BUILDING CODE (IBC) SECTION 85
  38. INTERNATIONAL BUILDING CODE (IBC) SECTION 90
  39. INTERNATIONAL BUILDING CODE (IBC) SECTION 95
  40. INTERNATIONAL BUILDING CODE (IBC) SECTION 100
  41. INTERNATIONAL BUILDING CODE (IBC) SECTION 105
  42. INTERNATIONAL BUILDING CODE (IBC) SECTION 110
  43. INTERNATIONAL BUILDING CODE (IBC) SECTION 115
  44. INTERNATIONAL BUILDING CODE (IBC) SECTION 120
  45. INTERNATIONAL BUILDING CODE (IBC) SECTION 125
  46. INTERNATIONAL BUILDING CODE (IBC) SECTION 130
  47. INTERNATIONAL BUILDING CODE (IBC) SECTION 135
  48. INTERNATIONAL BUILDING CODE (IBC) SECTION 140
  49. INTERNATIONAL BUILDING CODE (IBC) SECTION 145
  50. INTERNATIONAL BUILDING CODE (IBC) SECTION 150
3. COMPLIANCE WITH THE INTERNATIONAL RESIDENTIAL CODE FOR THE FOLLOWING:
  31. ATTIC ACCESS
  32. ATTIC FLOOR
  33. ATTIC FLOOR JOIST
  34. ATTIC FLOOR TRUSS
  35. ATTIC FLOOR BRACING
  36. ATTIC FLOOR DIMENSIONS
  37. ATTIC FLOOR FINISHES
  38. ATTIC FLOOR JOISTS
  39. ATTIC FLOOR TRusses
  40. ATTIC FLOOR BRACING
  41. ATTIC FLOOR DIMENSIONS
  42. ATTIC FLOOR FINISHES
  43. ATTIC FLOOR JOISTS
  44. ATTIC FLOOR TRusses
  45. ATTIC FLOOR BRACING
  46. ATTIC FLOOR DIMENSIONS
  47. ATTIC FLOOR FINISHES
  48. ATTIC FLOOR JOISTS
  49. ATTIC FLOOR TRusses
  50. ATTIC FLOOR BRACING
  51. ATTIC FLOOR DIMENSIONS
  52. ATTIC FLOOR FINISHES
  53. ATTIC FLOOR JOISTS
  54. ATTIC FLOOR TRusses
  55. ATTIC FLOOR BRACING
  56. ATTIC FLOOR DIMENSIONS
  57. ATTIC FLOOR FINISHES
  58. ATTIC FLOOR JOISTS
  59. ATTIC FLOOR TRusses
  60. ATTIC FLOOR BRACING
  61. ATTIC FLOOR DIMENSIONS
  62. ATTIC FLOOR FINISHES
  63. ATTIC FLOOR JOISTS
  64. ATTIC FLOOR TRusses
  65. ATTIC FLOOR BRACING
  66. ATTIC FLOOR DIMENSIONS
  67. ATTIC FLOOR FINISHES
  68. ATTIC FLOOR JOISTS
  69. ATTIC FLOOR TRusses
  70. ATTIC FLOOR BRACING
  71. ATTIC FLOOR DIMENSIONS
  72. ATTIC FLOOR FINISHES
  73. ATTIC FLOOR JOISTS
  74. ATTIC FLOOR TRusses
  75. ATTIC FLOOR BRACING
  76. ATTIC FLOOR DIMENSIONS
  77. ATTIC FLOOR FINISHES
  78. ATTIC FLOOR JOISTS
  79. ATTIC FLOOR TRusses
  80. ATTIC FLOOR BRACING
  81. ATTIC FLOOR DIMENSIONS
  82. ATTIC FLOOR FINISHES
  83. ATTIC FLOOR JOISTS
  84. ATTIC FLOOR TRusses
  85. ATTIC FLOOR BRACING
  86. ATTIC FLOOR DIMENSIONS
  87. ATTIC FLOOR FINISHES
  88. ATTIC FLOOR JOISTS
  89. ATTIC FLOOR TRusses
  90. ATTIC FLOOR BRACING
  91. ATTIC FLOOR DIMENSIONS
  92. ATTIC FLOOR FINISHES
  93. ATTIC FLOOR JOISTS
  94. ATTIC FLOOR TRusses
  95. ATTIC FLOOR BRACING
  96. ATTIC FLOOR DIMENSIONS
  97. ATTIC FLOOR FINISHES
  98. ATTIC FLOOR JOISTS
  99. ATTIC FLOOR TRusses
  100. ATTIC FLOOR BRACING

**01 FIRST FLOOR PLAN**  
SCALE: 1/4" = 1'-0"



UNCL: 1. ALL DIMENSIONS SHALL BE TO THE FACE UNLESS OTHERWISE NOTED.  
2. ALL DIMENSIONS SHALL BE TO THE CENTERLINE UNLESS OTHERWISE NOTED.

**PLAN KEYNOTES**

- 1. ALL DIMENSIONS SHALL BE TO THE FACE UNLESS OTHERWISE NOTED.
- 2. ALL DIMENSIONS SHALL BE TO THE CENTERLINE UNLESS OTHERWISE NOTED.
- 3. FINISHES SHALL BE IN ACCORDANCE WITH THE INTERNATIONAL RESIDENTIAL CODE.
- 4. FINISHES SHALL BE IN ACCORDANCE WITH THE INTERNATIONAL BUILDING CODE.
- 5. FINISHES SHALL BE IN ACCORDANCE WITH THE INTERNATIONAL BUILDING CODE.
- 6. FINISHES SHALL BE IN ACCORDANCE WITH THE INTERNATIONAL BUILDING CODE.
- 7. FINISHES SHALL BE IN ACCORDANCE WITH THE INTERNATIONAL BUILDING CODE.
- 8. FINISHES SHALL BE IN ACCORDANCE WITH THE INTERNATIONAL BUILDING CODE.
- 9. FINISHES SHALL BE IN ACCORDANCE WITH THE INTERNATIONAL BUILDING CODE.
- 10. FINISHES SHALL BE IN ACCORDANCE WITH THE INTERNATIONAL BUILDING CODE.
- 11. FINISHES SHALL BE IN ACCORDANCE WITH THE INTERNATIONAL BUILDING CODE.
- 12. FINISHES SHALL BE IN ACCORDANCE WITH THE INTERNATIONAL BUILDING CODE.
- 13. FINISHES SHALL BE IN ACCORDANCE WITH THE INTERNATIONAL BUILDING CODE.
- 14. FINISHES SHALL BE IN ACCORDANCE WITH THE INTERNATIONAL BUILDING CODE.
- 15. FINISHES SHALL BE IN ACCORDANCE WITH THE INTERNATIONAL BUILDING CODE.
- 16. FINISHES SHALL BE IN ACCORDANCE WITH THE INTERNATIONAL BUILDING CODE.
- 17. FINISHES SHALL BE IN ACCORDANCE WITH THE INTERNATIONAL BUILDING CODE.
- 18. FINISHES SHALL BE IN ACCORDANCE WITH THE INTERNATIONAL BUILDING CODE.
- 19. FINISHES SHALL BE IN ACCORDANCE WITH THE INTERNATIONAL BUILDING CODE.
- 20. FINISHES SHALL BE IN ACCORDANCE WITH THE INTERNATIONAL BUILDING CODE.
- 21. FINISHES SHALL BE IN ACCORDANCE WITH THE INTERNATIONAL BUILDING CODE.
- 22. FINISHES SHALL BE IN ACCORDANCE WITH THE INTERNATIONAL BUILDING CODE.
- 23. FINISHES SHALL BE IN ACCORDANCE WITH THE INTERNATIONAL BUILDING CODE.
- 24. FINISHES SHALL BE IN ACCORDANCE WITH THE INTERNATIONAL BUILDING CODE.
- 25. FINISHES SHALL BE IN ACCORDANCE WITH THE INTERNATIONAL BUILDING CODE.
- 26. FINISHES SHALL BE IN ACCORDANCE WITH THE INTERNATIONAL BUILDING CODE.
- 27. FINISHES SHALL BE IN ACCORDANCE WITH THE INTERNATIONAL BUILDING CODE.
- 28. FINISHES SHALL BE IN ACCORDANCE WITH THE INTERNATIONAL BUILDING CODE.
- 29. FINISHES SHALL BE IN ACCORDANCE WITH THE INTERNATIONAL BUILDING CODE.
- 30. FINISHES SHALL BE IN ACCORDANCE WITH THE INTERNATIONAL BUILDING CODE.
- 31. FINISHES SHALL BE IN ACCORDANCE WITH THE INTERNATIONAL BUILDING CODE.
- 32. FINISHES SHALL BE IN ACCORDANCE WITH THE INTERNATIONAL BUILDING CODE.
- 33. FINISHES SHALL BE IN ACCORDANCE WITH THE INTERNATIONAL BUILDING CODE.
- 34. FINISHES SHALL BE IN ACCORDANCE WITH THE INTERNATIONAL BUILDING CODE.
- 35. FINISHES SHALL BE IN ACCORDANCE WITH THE INTERNATIONAL BUILDING CODE.
- 36. FINISHES SHALL BE IN ACCORDANCE WITH THE INTERNATIONAL BUILDING CODE.
- 37. FINISHES SHALL BE IN ACCORDANCE WITH THE INTERNATIONAL BUILDING CODE.
- 38. FINISHES SHALL BE IN ACCORDANCE WITH THE INTERNATIONAL BUILDING CODE.
- 39. FINISHES SHALL BE IN ACCORDANCE WITH THE INTERNATIONAL BUILDING CODE.
- 40. FINISHES SHALL BE IN ACCORDANCE WITH THE INTERNATIONAL BUILDING CODE.
- 41. FINISHES SHALL BE IN ACCORDANCE WITH THE INTERNATIONAL BUILDING CODE.
- 42. FINISHES SHALL BE IN ACCORDANCE WITH THE INTERNATIONAL BUILDING CODE.
- 43. FINISHES SHALL BE IN ACCORDANCE WITH THE INTERNATIONAL BUILDING CODE.
- 44. FINISHES SHALL BE IN ACCORDANCE WITH THE INTERNATIONAL BUILDING CODE.
- 45. FINISHES SHALL BE IN ACCORDANCE WITH THE INTERNATIONAL BUILDING CODE.
- 46. FINISHES SHALL BE IN ACCORDANCE WITH THE INTERNATIONAL BUILDING CODE.
- 47. FINISHES SHALL BE IN ACCORDANCE WITH THE INTERNATIONAL BUILDING CODE.
- 48. FINISHES SHALL BE IN ACCORDANCE WITH THE INTERNATIONAL BUILDING CODE.
- 49. FINISHES SHALL BE IN ACCORDANCE WITH THE INTERNATIONAL BUILDING CODE.
- 50. FINISHES SHALL BE IN ACCORDANCE WITH THE INTERNATIONAL BUILDING CODE.
- 51. FINISHES SHALL BE IN ACCORDANCE WITH THE INTERNATIONAL BUILDING CODE.
- 52. FINISHES SHALL BE IN ACCORDANCE WITH THE INTERNATIONAL BUILDING CODE.
- 53. FINISHES SHALL BE IN ACCORDANCE WITH THE INTERNATIONAL BUILDING CODE.
- 54. FINISHES SHALL BE IN ACCORDANCE WITH THE INTERNATIONAL BUILDING CODE.
- 55. FINISHES SHALL BE IN ACCORDANCE WITH THE INTERNATIONAL BUILDING CODE.
- 56. FINISHES SHALL BE IN ACCORDANCE WITH THE INTERNATIONAL BUILDING CODE.
- 57. FINISHES SHALL BE IN ACCORDANCE WITH THE INTERNATIONAL BUILDING CODE.
- 58. FINISHES SHALL BE IN ACCORDANCE WITH THE INTERNATIONAL BUILDING CODE.
- 59. FINISHES SHALL BE IN ACCORDANCE WITH THE INTERNATIONAL BUILDING CODE.
- 60. FINISHES SHALL BE IN ACCORDANCE WITH THE INTERNATIONAL BUILDING CODE.
- 61. FINISHES SHALL BE IN ACCORDANCE WITH THE INTERNATIONAL BUILDING CODE.
- 62. FINISHES SHALL BE IN ACCORDANCE WITH THE INTERNATIONAL BUILDING CODE.
- 63. FINISHES SHALL BE IN ACCORDANCE WITH THE INTERNATIONAL BUILDING CODE.
- 64. FINISHES SHALL BE IN ACCORDANCE WITH THE INTERNATIONAL BUILDING CODE.
- 65. FINISHES SHALL BE IN ACCORDANCE WITH THE INTERNATIONAL BUILDING CODE.
- 66. FINISHES SHALL BE IN ACCORDANCE WITH THE INTERNATIONAL BUILDING CODE.
- 67. FINISHES SHALL BE IN ACCORDANCE WITH THE INTERNATIONAL BUILDING CODE.
- 68. FINISHES SHALL BE IN ACCORDANCE WITH THE INTERNATIONAL BUILDING CODE.
- 69. FINISHES SHALL BE IN ACCORDANCE WITH THE INTERNATIONAL BUILDING CODE.
- 70. FINISHES SHALL BE IN ACCORDANCE WITH THE INTERNATIONAL BUILDING CODE.
- 71. FINISHES SHALL BE IN ACCORDANCE WITH THE INTERNATIONAL BUILDING CODE.
- 72. FINISHES SHALL BE IN ACCORDANCE WITH THE INTERNATIONAL BUILDING CODE.
- 73. FINISHES SHALL BE IN ACCORDANCE WITH THE INTERNATIONAL BUILDING CODE.
- 74. FINISHES SHALL BE IN ACCORDANCE WITH THE INTERNATIONAL BUILDING CODE.
- 75. FINISHES SHALL BE IN ACCORDANCE WITH THE INTERNATIONAL BUILDING CODE.
- 76. FINISHES SHALL BE IN ACCORDANCE WITH THE INTERNATIONAL BUILDING CODE.
- 77. FINISHES SHALL BE IN ACCORDANCE WITH THE INTERNATIONAL BUILDING CODE.
- 78. FINISHES SHALL BE IN ACCORDANCE WITH THE INTERNATIONAL BUILDING CODE.
- 79. FINISHES SHALL BE IN ACCORDANCE WITH THE INTERNATIONAL BUILDING CODE.
- 80. FINISHES SHALL BE IN ACCORDANCE WITH THE INTERNATIONAL BUILDING CODE.
- 81. FINISHES SHALL BE IN ACCORDANCE WITH THE INTERNATIONAL BUILDING CODE.
- 82. FINISHES SHALL BE IN ACCORDANCE WITH THE INTERNATIONAL BUILDING CODE.
- 83. FINISHES SHALL BE IN ACCORDANCE WITH THE INTERNATIONAL BUILDING CODE.
- 84. FINISHES SHALL BE IN ACCORDANCE WITH THE INTERNATIONAL BUILDING CODE.
- 85. FINISHES SHALL BE IN ACCORDANCE WITH THE INTERNATIONAL BUILDING CODE.
- 86. FINISHES SHALL BE IN ACCORDANCE WITH THE INTERNATIONAL BUILDING CODE.
- 87. FINISHES SHALL BE IN ACCORDANCE WITH THE INTERNATIONAL BUILDING CODE.
- 88. FINISHES SHALL BE IN ACCORDANCE WITH THE INTERNATIONAL BUILDING CODE.
- 89. FINISHES SHALL BE IN ACCORDANCE WITH THE INTERNATIONAL BUILDING CODE.
- 90. FINISHES SHALL BE IN ACCORDANCE WITH THE INTERNATIONAL BUILDING CODE.
- 91. FINISHES SHALL BE IN ACCORDANCE WITH THE INTERNATIONAL BUILDING CODE.
- 92. FINISHES SHALL BE IN ACCORDANCE WITH THE INTERNATIONAL BUILDING CODE.
- 93. FINISHES SHALL BE IN ACCORDANCE WITH THE INTERNATIONAL BUILDING CODE.
- 94. FINISHES SHALL BE IN ACCORDANCE WITH THE INTERNATIONAL BUILDING CODE.
- 95. FINISHES SHALL BE IN ACCORDANCE WITH THE INTERNATIONAL BUILDING CODE.
- 96. FINISHES SHALL BE IN ACCORDANCE WITH THE INTERNATIONAL BUILDING CODE.
- 97. FINISHES SHALL BE IN ACCORDANCE WITH THE INTERNATIONAL BUILDING CODE.
- 98. FINISHES SHALL BE IN ACCORDANCE WITH THE INTERNATIONAL BUILDING CODE.
- 99. FINISHES SHALL BE IN ACCORDANCE WITH THE INTERNATIONAL BUILDING CODE.
- 100. FINISHES SHALL BE IN ACCORDANCE WITH THE INTERNATIONAL BUILDING CODE.

**NOTE TO TRUSS MANUFACTURER**

DO NOT LOCATE TRusses UNDER TOILETS, BATHROOM OR SVA & RVA CLASSES

**FIRE RATED SEPARATION WALL**

WALLS SHALL BE 1/2" THICK TYPE 'X' GYPSUM WALL. REFER TO DETAIL O/23 FOR SPECIFICATION.



