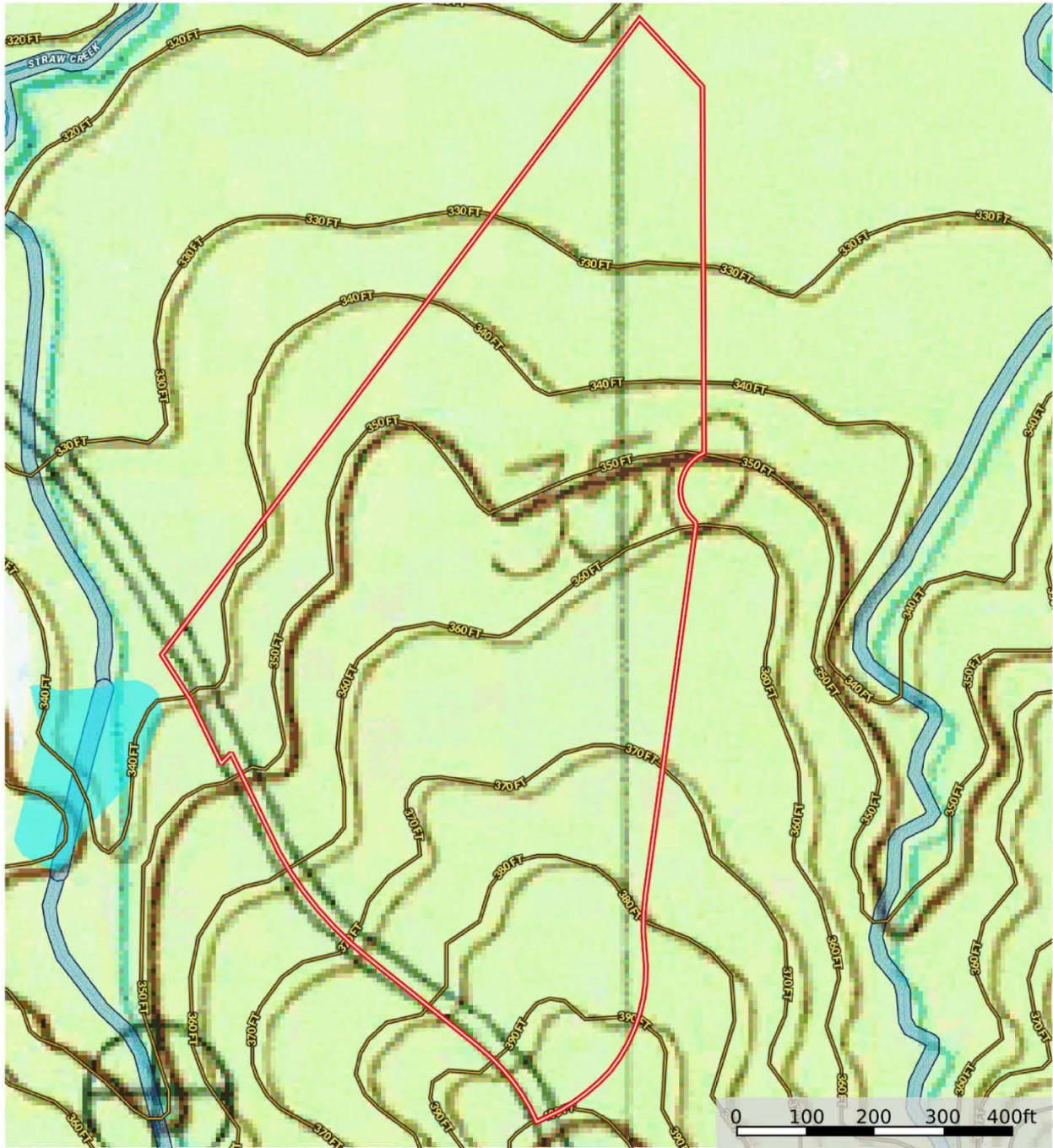


TBD CR 1060 Lot 45
Shelby County, Texas, 16.39 AC +/-



- Boundary
- Wetlands
- Riparian
- Stream, Intermittent
- River/Creek
- Water Body

id. The information contained herein was obtained from sources deemed to be reliable. Land id™ Services makes no warranties or guarantees as to the completeness or accuracy thereof.



Data presented is for reference purposes only and cannot be guaranteed.

id. The information contained herein was obtained from sources deemed to be reliable. Land id™ Services makes no warranties or guarantees as to the completeness or accuracy thereof.